

Fact Book | **2024**

Editor's note

The *Fact Book* is truly a university-wide effort. We are personally indebted to the many departments and individuals who lend their time, expertise, and support year after year. Without them, this publication would cease to exist. We therefore wish to publicly acknowledge the efforts of all involved and especially thank the following:

Kevin A. Morano, PhD
Senior Vice President for Academic & Faculty Affairs

UTHealth Houston Office of Academic Administration

Deanne Hernandez, MPA
Diana Keosayian, EdD
Kathy Rodgers
Nesh Aqrawi

Also

Sonia Aguilar	Capital Assets Management
Scott Barnett	Accounting and Budget
April Bass	McGovern Medical School
Heather Beckles-Bright	Student Financial Services
Leslie Beckman	Office of Postdoctoral Affairs
Lisa Cain, PhD	School of Dentistry
Nguyen Cao	Graduate School of Biomedical Sciences
Lisa Christison	Office of Development
Sarah Donahue	School of Public Health
Melissa Ethington, PhD, RN	Cizik School of Nursing
Christine Flynn, PhD	Office of Technology Management
James Fore	Student Financial Services
Johnson George	McGovern Medical School Office of Administration & Faculty Affairs
Jaime Hargrave	McWilliams School of Biomedical Informatics
Joy Harrison, DNP, MSN, RN	Cizik School of Nursing
Robert Jenkins	Office of the Registrar
Kathleen Kreidler	Sponsored Projects Administration
Frank La	Sponsored Projects Administration
Addison Marshall	Facilities Planning & Engineering
Dana McDowelle, PhD	McGovern Medical School
Rose Hochner Nelson	Office of the President
Gail Nettles	Office of the President
Shalizeh Patel, DDS, MEd	School of Dentistry
Lois Pierson, CPA	Behavioral Sciences Campus
Cathy Rozmus, PhD, RN	Cizik School of Nursing
Claire Singletary, MS, CGC	Graduate School of Biomedical Sciences
Robert Spears, PhD	School of Dentistry
Sue Thomey	Bursar's Office
Bret Wandel	Facilities Planning & Engineering
Karen Weinberg	Graduate School of Biomedical Sciences
Tera Wright	Office of the Registrar

Deanne Hernandez, MPA
Associate Vice President, Institutional Research, Assessment & Accreditation
Editor, *Fact Book 2024*

Preface *Fact Book 2024*

The Office of Academic Administration is pleased to introduce the thirty-fourth edition of The University of Texas Health Science Center at Houston's (UTHealth Houston) annual *Fact Book*.

Data, where appropriate, align with:

- The university's Annual Financial Report;
- Certified Texas Higher Education Coordinating Board reports (enrollment, degrees conferred, faculty, medical residents);
- Performance Measures reported to the Legislative Budget Board (uncompensated charity care, medical outpatient clinical activity – visits); and/or
- Other State and UT System required reports (financial aid, research expenditures, facilities, philanthropy)

Most tables portray FY 2023 data, which covers the period of September 1, 2022 – August 31, 2023. Enrollment and employee figures are as of October 2023 and the executive organization chart is current as of press time.

Table titles will indicate the date(s) covered.

UTHealth Houston *Mission Statement*

As a comprehensive health science university, the mission of The University of Texas Health Science Center at Houston is to educate health science professionals, discover and translate advances in the biomedical and social sciences, and model the best practices in clinical care and public health.

We pursue this mission in order to advance the quality of human life by enhancing the diagnosis, treatment, and prevention of disease and injury, as well as promoting individual health and community well-being.

UTHealth Houston *Vision Statement*

Excellence above all in the quest to be an acknowledged leader in the collaboration to treat, cure and prevent the most common diseases of our time through education, research and clinical practice.

Please direct questions or comments regarding *Fact Book 2024* to:

UTHealth Houston Academic Administration
7000 Fannin, Suite 1420
Houston, Texas 77030

UCT 1420 (for intra-institutional mail)

713.500.3192 telephone

Deanne Hernandez, MPA
Associate Vice President for Institutional Research, Assessment & Accreditation
Fact Book Editor

The University of Texas Health Science Center at Houston is accredited by the Southern Association of Colleges and Schools Commission on Colleges (SACSCOC) to award baccalaureate, masters, doctoral, and professional degrees. Degree-granting institutions also may offer credentials such as certificates and diplomas at approved degree levels. Questions about the accreditation of The University of Texas Health Science Center at Houston may be directed in writing to the Southern Association of Colleges and Schools Commission on Colleges at 1866 Southern Lane, Decatur, GA 30033-4097, by calling (404) 679-4500, or by using information available on SACSCOC's website (www.sacscoc.org).

The University of Texas Health Science Center at Houston ("University") is committed to providing a working and learning environment free from discrimination and harassment. The University prohibits discrimination and/or harassment by any member of the University community on the basis of race, color, religion, sex (including pregnancy), gender, sexual orientation, national origin, age, disability, genetic information, gender identity or expression, veteran status or any other basis prohibited by law. No person shall be excluded from participation in, denied the benefits of, or be subject to discrimination under any program or activity sponsored or conducted by the University or any of its component entities on any basis prohibited by applicable law or University policy.

Table of Contents *Fact Book 2024*

Preface	3
The University of Texas Board of Regents	6
UTHealth Houston Executive Leadership	7
Education	9
Summary of Academic Programs & Accreditation	11
Applicant Profile	12
Headcount Enrollment by Full-time/Part-time Status	13
Headcount Enrollment by Race/Ethnicity	14
Headcount Enrollment by Level	16
Headcount Enrollment by Level, Race/Ethnicity & Gender	17
Headcount Enrollment by Academic Program	18
Headcount Enrollment by Residency	20
Full-time Equivalent (FTE) Student Enrollment	21
Graduate School of Biomedical Sciences Students by Institutional Affiliation	22
Postdoctoral Research Fellows	22
Licensure Examination Results	23
Degrees Conferred by School	24
Degrees Conferred by Academic Program	26
Degrees Conferred by Level & Race/Ethnicity	28
Profile of Medical Residents in ACGME Accredited Programs	29
McGovern Medical School Graduating Class Specialty Choices	30
School of Dentistry Residents & Postgraduate Students	31
Medical (MCAT) & Dental (DAT) Applicant Scores	32
Tuition & Fees	33
Student Financial Aid Profile	34
Total Student Financial Aid Awards by School	35
Total Student Financial Aid Awards by Major Program	36
Average Student Financial Aid Awards by School	37
Average Student Debt on Graduation	38
Total Graduates by School	39
Research	41
Research Expenditures by Unit	43
UT Health-Related Institutions Research Expenditures by Source	44
Trends in UT Health-Related Institutions Research Expenditures	44
Research Expenditures by Sponsoring Agency	45
Intellectual Property Activity	46
Grant Proposals by Unit & Type	47
Contract & Grant Awards by Unit & Type	48
Contract & Grant Awards by Source	50
NIH Awards by Unit	52
Federal Awards by Agency	53
Principal Investigators by Unit	53
Sponsored Project Activity Report	54

Patient Care	55
McGovern Medical School Outpatient Clinical Activity - Visits	57
Un-sponsored Medical & Dental Charity Care Provided by Faculty	57
School of Dentistry Clinical Activity: Patient Visits	58
School of Dentistry Clinical Activity: Patient Treatments	59
UT Health Services Patient Visits	60
Behavioral Sciences Campus Clinical Activity	60
Medical Practice Plan Summary of Operations	61
Employees	63
Faculty by Full-time/Part-time Status	65
Without Salary Faculty Appointments	65
Faculty by Race/Ethnicity & Gender	66
Faculty by Tenure Status & Gender	67
Classified Staff by Race/Ethnicity & Gender	68
Administrative & Professional (A&P) Staff by Race/Ethnicity & Gender	69
Employees by Employment Category	70
Graduate School of Biomedical Sciences Faculty Membership by Institutional Affiliation	71
Budgeted Full-time Equivalent (FTE) Employees by Source of Funds	72
Faculty Honors	74
Finance & Philanthropy	75
Total Funds Operating Budget by Unit & Revenue Source	77
Total Funds Operating Budget by Revenue Source	78
Total Funds Operating Budget by NACUBO Function	79
State Funds Operating Budget	80
Endowment Trends	81
Voluntary Support	81
Faculty Endowment Status	82
Endowed Scholarships	82
Physical Facilities	83
Capital Equipment Expenditures by Asset Category	85
Facilities Operating Expenditures (Owned)	86
Purchased Utilities	86
Space Inventory by Function	87
Space Inventory by Program	88

The University of Texas Board of Regents

Source: <https://utsystem.edu/regents>

The Board of Regents, the governing body for The University of Texas System, is composed of nine members who are appointed by the Governor and confirmed by the Senate. Terms for Regents are scheduled for six years each and staggered so that three members' terms will usually expire on February 1 in odd-numbered years. In addition, the Governor appoints a Student Regent for a one-year term that expires on May 31.

Throughout the more than 100-year history of The U. T. System, the Board has been composed of dedicated and distinguished Texans who have been strong advocates of excellence in academic programs, scientific inquiry, and responsible public service.

Kevin P. Eltife, *Chairman*

Janiece Longoria, *Vice Chairman*

James C. "Rad" Weaver, *Vice Chairman*

Christina Melton Crain

Robert P. Gauntt

Jodie Lee Jiles

Nolan Perez, MD

Stewart W. Steadman

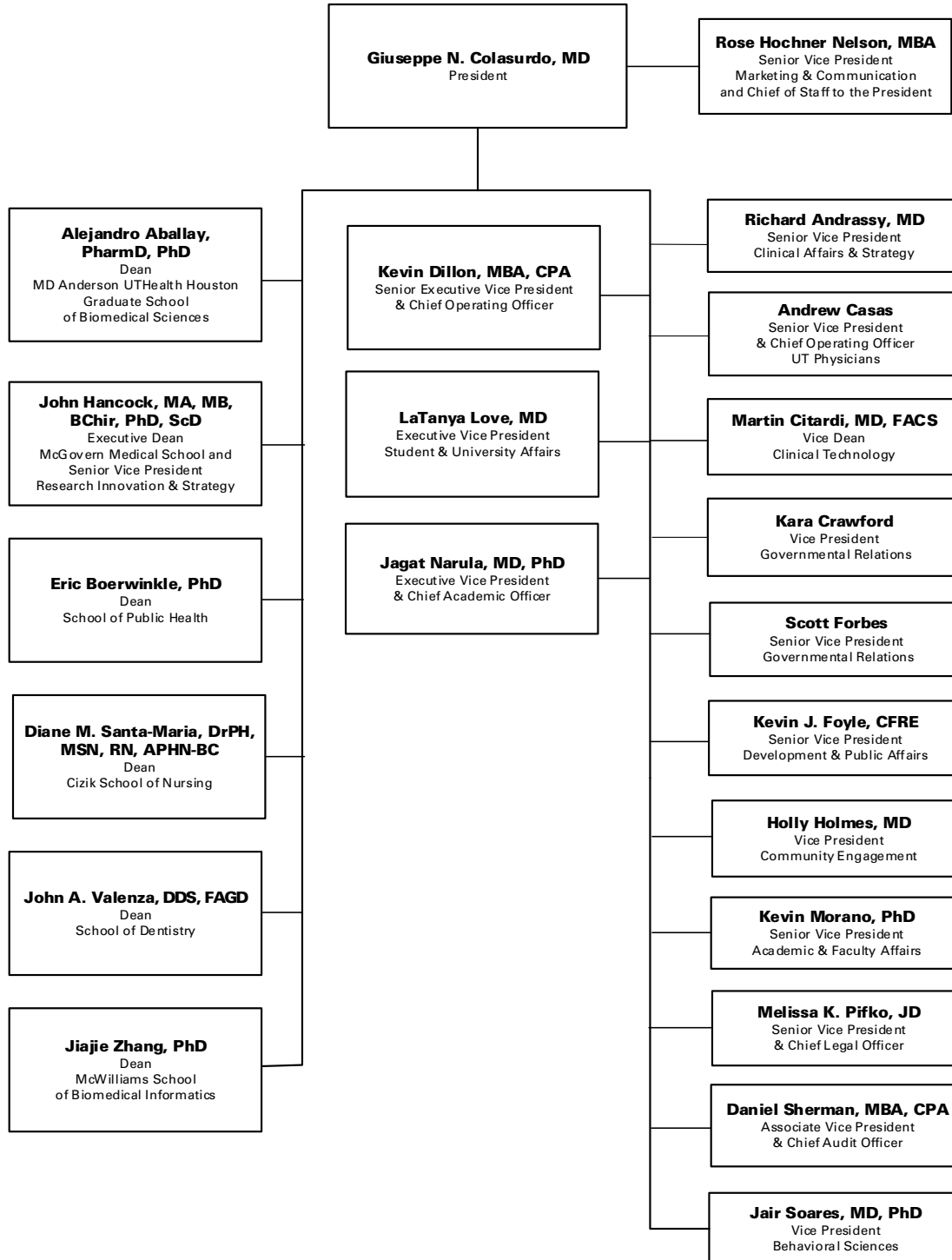
Kelcy L. Warren

John Michael Austin, *Student Regent*

Francie A. Frederick, General Counsel to the Board of Regents

UTHealth Houston Organization

Source: Rose Hochner Nelson, Office of the President



This page is intentionally blank

Education

Summary of Academic Programs & Accreditation	11
Applicant Profile	12
Headcount Enrollment by Full-time/Part-time Status	13
Headcount Enrollment by Race/Ethnicity	14
Headcount Enrollment by Level	16
Headcount Enrollment by Level, Race/Ethnicity & Gender	17
Headcount Enrollment by Academic Program	18
Headcount Enrollment by Residency	20
Full-time Equivalent (FTE) Student Enrollment	21
Graduate School of Biomedical Sciences Students by Institutional Affiliation	22
Postdoctoral Research Fellows	22
Licensure Examination Results	23
Degrees Conferred by School	24
Degrees Conferred by Academic Program	26
Degrees Conferred by Level & Race/Ethnicity	28
Profile of Medical Residents in ACGME Accredited Programs	29
McGovern Medical School Graduating Class Specialty Choices	30
School of Dentistry Residents & Postgraduate Students	31
Medical (MCAT) & Dental (DAT) Applicant Scores	32
Tuition & Fees	33
Student Financial Aid Profile	34
Total Student Financial Aid Awards by School	35
Total Student Financial Aid Awards by Major Program	36
Average Student Financial Aid Awards by School	37
Average Student Debt on Graduation	38
Total Graduates by School	39

Summary of Academic Programs & Accreditation

The University of Texas Health Science Center at Houston is accredited by the Southern Association of Colleges and Schools Commission on Colleges (SACSCOC) to award baccalaureate, masters, doctoral, and professional degrees. Degree-granting institutions also may offer credentials such as certificates and diplomas at approved degree levels. Questions about the accreditation of The University of Texas Health Science Center at Houston may be directed in writing to the Southern Association of Colleges and Schools Commission on Colleges at 1866 Southern Lane, Decatur, GA 30033-4097, by calling (404) 679-4500, or by using information available on SACSCOC's website (www.sacscoc.org).

The list below provides a comprehensive listing of each accrediting agency that reviews one or more UTHealth Houston academic programs.

	Agency	Last	Next
The University of Texas			
Health Science Center at Houston	SACSCOC	2021	2031 ¹
McWilliams School of Biomedical Informatics			
MS	CAHIIM	2019	2026
School of Dentistry			
DDS	CODA	2019	2027
BS (Dental Hygiene)	CODA	2019	2027
Certificate in Advanced Education Programs	CODA	2019	2027
Certificate in Dental Hygiene	CODA	2019	2027
Certificate in Oral & Maxillofacial Surgery	CODA	2021	2026
MD Anderson Cancer Center UTHealth Houston Graduate School of Biomedical Sciences			
Certificate in Medical Physics	CAMPEP	2017	2024
MS in Medical Physics	CAMPEP	2017	2024
MS in Genetic Counseling	ACGC	2021	2029
McGovern Medical School			
MD	LCME	2019	2028
Cizik School of Nursing			
BSN, MSN, DNP	CCNE	2021	2031
Nurse Anesthesia	CANAEP	2021	2032
School of Public Health			
MPH, MS, DrPH, PhD	CEPH	2019	2027

SACSCOC: Southern Association of Colleges & Schools Commission on Colleges
 CAHIIM: Commission on Accreditation for Health Informatics and Information Management Education
 CODA: Commission on Dental Accreditation (*federally-recognized*)
 CAMPEP: Commission on Accreditation of Medical Physics Education Programs
 ACGC: Accreditation Council for Genetic Counseling
 LCME: Liaison Committee on Medical Education (*federally-recognized*)
 CCNE: Commission on Collegiate Nursing Education (*federally-recognized*)
 CANAEP: Council on Accreditation of Nurse Anesthesia Educational Programs (*federally-recognized*)
 CEPH: Commission on the Education of Public Health (*federally-recognized*)

¹ UTHealth Houston's Fifth Year Interim Report is due to SACSCOC in March 2027.

Applicant Profile Fall 2023

Sources: Robert Jenkins and Tera Wright, Office of the Registrar; Sarah Donahue, School of Public Health; Karen Weinberg and Nguyen Cao, Graduate School of Biomedical Sciences; Jaime Hargrave, McWilliams School of Biomedical Informatics; Robert Spears, PhD, School of Dentistry; Melissa D. Ethington, PhD, RN, Cizik School of Nursing

Note:

¹ In this and all other pertinent Fact Book tables, minorities follow the State of Texas definition and include Black, Hispanic, Native American, and Pacific Islander.

		Grand Total	Male	Female	Unidentified Gender	Minorities ¹
McWilliams School of Biomedical Informatics						
	Applications received	231	86	145	0	51
	Admitted	163	55	108	0	30
	Denied	56	23	33	0	16
	No action/pending/incomplete	12	8	4	0	5
School of Dentistry						
<i>DDS</i>	Applications received	1,723	752	970	1	402
	Admitted	104	35	69	0	21
	Denied	1,511	666	844	1	402
	Withdrew after acceptance	70	30	40	0	24
	Withdrew before acceptance	16	11	5	0	3
<i>DH</i>	Applications received	95	11	76	8	43
	Admitted	31	5	24	2	13
	Denied	64	6	52	6	30
<i>Adv Ed</i>	Applications Received	99	11	83	5	73
	Admitted	34	4	28	2	28
	Denied	57	7	47	3	39
Graduate School of Biomedical Sciences						
	Applications Received	1,451	517	934	0	174
	Admitted	217	62	155	0	45
	Denied	1,221	450	771	0	127
	No action/pending	13	5	8	0	2
McGovern Medical School						
<i>MD</i>	Applications received (all)	5,531	2,542	2,974	15	1,395
	Interviewed	1,110	516	592	2	n/a
	Admitted	240	109	131	0	n/a
	First Generation College					
	All applicants	2,083	931	1,149	3	n/a
	Admitted	76	37	39	0	n/a
	Veterans					
	All applicants	72	46	25	1	n/a
	Admitted	1	1	0	0	n/a
<i>MSCR</i>	Applications Received	28	12	16	0	4
	Admitted	25	10	15	0	4
	Denied	0	0	0	0	0
	Pending/Incomplete/Waitlist	3	2	1	0	0
Cizik School of Nursing						
	Applications received	761	135	625	1	384
	Admitted	309	44	264	1	146
	Denied	362	65	297	0	202
	Pending/incomplete/waitlist	90	26	64	0	36
School of Public Health						
	Applications received	1,272	354	917	1	312
	Admitted	928	251	676	1	224
	Denied	243	70	173	0	62
	Pending/incomplete/waitlist	101	33	68	0	26
Grand Total						
	Applications received	11,191				
	Admitted	2,051				

Headcount Enrollment by Full-time/Part-time Status *Fall 2019-2023*

Sources: Robert Jenkins and Tera Wright, Office of the Registrar
CBM001 Certified Enrollment Report to the Texas Higher Education Coordinating Board, October 2023

Note: Per THECB guidelines, students living outside of Texas and enrolled in an online program are not included in the enrollment counts for formula funding purposes. In Fall 2023, this represents four (4) students enrolled at McWilliams School of Biomedical Informatics and is reflected in this and all subsequent enrollment tables.

	Fall 2019		Fall 2020		Fall 2021		Fall 2022		Fall 2023	
	Number	Percent	Number	Percent	Number	Percent	Number	Percent	Number	Percent
McWilliams School of Biomedical Informatics										
Full-time	48	19%	65	22%	102	31%	102	29%	110	29%
Part-time	211	81%	225	78%	226	69%	253	71%	266	71%
MSBMI Total	259		290		328		355		376	
School of Dentistry										
Full-time	558	96%	555	97%	549	96%	545	96%	564	99%
Part-time	21	4%	19	3%	24	4%	24	4%	6	1%
SOD Total	579		574		573		569		570	
Graduate School of Biomedical Sciences										
Full-time	416	87%	413	86%	424	91%	435	92%	449	92%
Part-time	64	13%	67	14%	41	9%	38	8%	40	8%
GSBS Total	480		480		465		473		489	
McGovern Medical School										
Full-time	975	91%	982	88%	963	89%	973	90%	967	90%
Part-time	96	9%	134	12%	118	11%	113	10%	107	10%
MMS Total	1,071		1,116		1,081		1,086		1,074	
Cizik School of Nursing										
Full-time	726	45%	692	42%	705	44%	641	51%	508	48%
Part-time	900	55%	945	58%	897	56%	618	49%	559	52%
CSON Total	1,626		1,637		1,602		1,259		1,067	
School of Public Health										
Full-time	637	49%	793	52%	891	52%	798	51%	700	48%
Part-time	665	51%	721	48%	818	48%	780	49%	768	52%
SPH Total	1,302		1,514		1,709		1,578		1,468	
UTHealth Houston Total										
Full-time	3,360	63%	3,500	62%	3,634	63%	3,494	66%	3,298	65%
Part-time	1,957	37%	2,111	38%	2,124	37%	1,826	34%	1,746	35%
Grand Total	5,317		5,611		5,758		5,320		5,044	

Headcount Enrollment by Race/Ethnicity *Fall 2018 - 2023*

Sources: Robert Jenkins and Tera Wright, Office of the Registrar
 CBM001 Certified Enrollment Report to the Texas Higher Education Coordinating Board, October 2023

Note (*pertains to all education tables that report race/ethnicity breakouts*):

Per federal guidelines, postsecondary educational institutions must report data using nine specified reporting categories, which include: Nonresident aliens (for whom neither race nor ethnicity is reported), Hispanic/Latino of any race, for individuals who are non-Hispanic/Latino: American Indian or Alaska Native, Asian, Black or African American, Native Hawaiian or Other Pacific Islander, White, Two or more races, and Race and Ethnicity Unknown.

	Fall 2018		Fall 2019		Fall 2020		Fall 2021		Fall 2022		Fall 2023	
	Number	Percent	Number	Percent	Number	Percent	Number	Percent	Number	Percent	Number	Percent
McWilliams School of Biomedical Informatics												
Am. Indian	1	<1%	1	<1%	1	<1%	1	<1%	2	1%	3	1%
Asian	56	22%	48	19%	57	20%	62	19%	63	18%	54	14%
Black	31	12%	28	11%	38	13%	27	8%	31	9%	43	11%
Hispanic	40	16%	41	16%	48	17%	49	15%	62	17%	65	17%
International	47	18%	53	20%	51	18%	73	22%	73	21%	73	19%
Multi-Racial	3	1%	5	2%	5	2%	4	1%	5	1%	7	2%
Pacific Islander	3	1%	1	<1%	0	0%	0	0%	0	0%	0	0%
Unidentified	10	4%	10	4%	17	6%	24	7%	28	8%	45	12%
White	64	25%	72	28%	73	25%	88	27%	91	26%	86	23%
MSBMI Total	255		259		290		328		355		376	
School of Dentistry												
Am. Indian	1	<1%	1	<1%	1	<1%	0	0%	1	<1%	2	<1%
Asian	172	30%	189	33%	178	31%	169	29%	174	31%	171	30%
Black	24	4%	26	4%	28	5%	25	4%	23	4%	24	4%
Hispanic	97	17%	95	16%	101	18%	103	18%	106	19%	100	18%
International	12	2%	14	2%	16	3%	15	3%	18	3%	17	3%
Multi-Racial	17	3%	16	3%	16	3%	20	3%	17	3%	17	3%
Pacific Islander	0	0%	0	0%	1	<1%	1	<1%	0	0%	0	0%
Unidentified	17	3%	28	5%	17	3%	36	6%	34	6%	28	5%
White	230	40%	210	36%	216	38%	204	36%	196	34%	211	37%
SOD Total	570		579		574		573		569		570	
Graduate School of Biomedical Sciences												
Am. Indian	1	<1%	1	<1%	1	<1%	1	<1%	0	0%	0	0%
Asian	47	10%	51	11%	51	11%	44	9%	42	9%	46	9%
Black	19	4%	21	4%	19	4%	23	5%	23	5%	27	6%
Hispanic	34	7%	35	7%	41	9%	42	9%	55	12%	57	12%
International	164	36%	186	39%	187	39%	184	40%	196	41%	202	41%
Multi-Racial	8	2%	8	2%	7	1%	9	2%	8	2%	10	2%
Unidentified	35	8%	34	7%	27	6%	24	5%	24	5%	25	5%
White	146	32%	144	30%	147	31%	138	30%	125	26%	122	25%
GSBS Total	454		480		480		465		473		489	
McGovern Medical School												
Am. Indian	3	<1%	4	0%	4	0%	3	0%	2	0%	0	0%
Asian	256	23%	236	22%	232	21%	246	23%	265	24%	283	26%
Black	70	6%	74	7%	69	6%	73	7%	75	7%	75	7%
Hispanic	153	14%	152	14%	160	14%	150	14%	146	13%	157	15%
International	73	7%	56	5%	82	7%	76	7%	83	8%	79	7%
Multi-Racial	26	2%	29	3%	32	3%	32	3%	32	3%	29	3%
Unidentified	60	5%	64	6%	58	5%	57	5%	38	3%	33	3%
White	456	42%	456	43%	479	43%	444	41%	445	41%	418	39%
MMS Total	1,097		1,071		1,116		1,081		1,086		1,074	

continued **Headcount Enrollment by Race/Ethnicity Fall 2018 - 2023**

	Fall 2018		Fall 2019		Fall 2020		Fall 2021		Fall 2022		Fall 2023	
	Number	Percent	Number	Percent	Number	Percent	Number	Percent	Number	Percent	Number	Percent
Cizik School of Nursing												
Am. Indian	3	<1%	3	<1%	1	<1%	1	<1%	0	0%	0	0%
Asian	306	18%	307	19%	325	20%	336	21%	269	21%	206	19%
Black	301	17%	294	18%	332	20%	318	20%	250	20%	230	22%
Hispanic	399	23%	361	22%	349	21%	360	22%	296	24%	262	25%
International	18	1%	17	1%	23	1%	19	1%	10	1%	8	1%
Multi-Racial	52	3%	50	3%	49	3%	40	2%	29	2%	26	2%
Pacific Islander	5	<1%	3	<1%	1	<1%	4	<1%	1	<1%	1	<1%
Unidentified	20	1%	26	2%	25	2%	21	1%	41	3%	28	3%
White	618	36%	565	35%	532	32%	503	31%	363	29%	306	29%
CSON Total	1,722		1,626		1,637		1,602		1,259		1,067	
School of Public Health												
Am. Indian	0	0%	2	<1%	2	<1%	2	<1%	1	<1%	0	0%
Asian	194	16%	209	16%	234	15%	279	16%	253	16%	259	18%
Black	110	9%	136	10%	190	13%	218	13%	178	11%	168	11%
Hispanic	236	19%	258	20%	309	20%	390	23%	338	21%	284	19%
International	196	16%	208	16%	201	13%	281	16%	311	20%	323	22%
Multi-Racial	27	2%	24	2%	42	3%	32	2%	24	2%	23	2%
Pacific Islander	2	<1%	2	<1%	1	<1%	1	<1%	1	<1%	1	<1%
Unidentified	69	6%	66	5%	80	5%	76	4%	74	5%	62	4%
White	403	33%	397	30%	455	30%	430	25%	398	25%	348	24%
SPH Total	1,237		1,302		1,514		1,709		1,578		1,468	
UTHealth Houston Total												
Am. Indian	9	<1%	12	<1%	10	<1%	8	<1%	6	<1%	5	<1%
Asian	1,031	19%	1,040	20%	1,077	19%	1,136	20%	1,066	20%	1,019	20%
Black	555	10%	579	11%	676	12%	684	12%	580	11%	567	11%
Hispanic	959	18%	942	18%	1,008	18%	1,094	19%	1,003	19%	925	18%
International	510	10%	534	10%	560	10%	648	11%	691	13%	702	14%
Multi-Racial	133	2%	132	2%	151	3%	137	2%	115	2%	112	2%
Pacific Islander	10	<1%	6	<1%	3	<1%	6	<1%	2	<1%	2	<1%
Unidentified	211	4%	228	4%	224	4%	238	4%	239	4%	221	4%
White	1,917	36%	1,844	35%	1,902	34%	1,807	31%	1,618	30%	1,491	30%
Grand Total	5,335		5,317		5,611		5,758		5,320		5,044	

Headcount Enrollment by Level *Fall 2016 - 2023*

Sources: Robert Jenkins and Tera Wright, Office of the Registrar

CBM001 Certified Enrollment Report to the Texas Higher Education Coordinating Board, October 2023

	2016	2017	2018	2019	2020	2021	2022	2023
McWilliams School of Biomedical Informatics								
Graduate	148	156	140	157	216	266	280	298
Certificate	143	130	109	100	72	62	72	77
Non-degree	0	3	6	2	2		3	1
MSBMI Total	291	289	255	259	290	328	355	376
School of Dentistry								
Undergraduate	70	65	72	80	69	54	48	46
Undergraduate Certificate	11	14	4	2	7	8	10	13
Graduate	35	36	37	30	31	45	61	46
Professional	405	406	412	418	418	422	419	422
Post Graduate Certificate	39	44	45	49	49	44	31	43
SOD Total	560	565	570	579	574	573	569	570
Graduate School of Biomedical Sciences								
Graduate	402	392	407	431	430	432	444	462
Certificate	0	0	0	3	3	12	19	21
Non-degree	23	14	47	46	47	21	10	6
GSBS Total	425	406	454	480	480	465	473	489
McGovern Medical School								
Graduate	13	14	13	15	11	11	17	7
Certificate	94	91	95	80	118	104	95	94
Non-degree	0	5	5	2	8	4	2	7
Professional	968	967	984	974	979	962	972	966
MMS Total	1,075	1,077	1,097	1,071	1,116	1,081	1,086	1,074
Cizik School of Nursing								
Undergraduate	596	629	641	589	611	623	496	401
Graduate	813	945	1,002	948	941	897	727	626
Non-degree	67	73	79	89	85	82	36	40
CSON Total	1,476	1,647	1,722	1,626	1,637	1,602	1,259	1,067
School of Public Health								
Graduate	1,086	1,109	1,105	1,144	1,375	1,584	1,481	1,379
Certificate	105	117	108	131	112	106	80	72
Non-degree	32	31	24	27	27	19	17	17
SPH Total	1,223	1,257	1,237	1,302	1,514	1,709	1,578	1,468
UTHealth Houston Total								
Undergraduate	666	694	713	669	680	677	544	447
Undergraduate Certificate	11	14	4	2	7	8	10	13
Graduate	2,497	2,652	2,704	2,725	3,004	3,235	3,010	2,818
Professional	1,373	1,373	1,396	1,392	1,397	1,384	1,391	1,388
Post Graduate Certificate	39	44	45	49	49	44	31	43
Certificate	342	338	312	314	305	284	266	264
Non-degree	122	126	161	166	169	126	68	71
Grand Total	5,050	5,241	5,335	5,317	5,611	5,758	5,320	5,044

Headcount Enrollment by Level, Race/Ethnicity & Gender Fall 2023

Sources: Robert Jenkins and Tera Wright, Office of the Registrar

CBM001 Certified Enrollment Report to the Texas Higher Education Coordinating Board, October 2023

School/Level	Asian		Black		International		Hispanic		American Indian		White		Unidentified		Pacific Islander		Multi-Racial		Grand Total		Total
	M	F	M	F	M	F	M	F	M	F	M	F	M	F	M	F	M	F	M	F	
McWilliams School of Biomedical Informatics																					
Non-Degree	0	0	0	0	0	0	0	0	0	0	0	1	0	0	0	0	0	0	0	0	0
Certificate	5	5	2	12	3	2	11	10	0	1	6	8	2	8	0	0	0	2	29	48	77
Graduate	16	28	12	17	29	39	18	26	1	1	23	48	12	23	0	0	1	4	112	186	298
Total MSBMI	21	33	14	29	32	41	29	36	1	2	29	57	14	31	0	0	1	6	141	235	376
School of Dentistry																					
1st Year Dental	11	23	1	5	0	0	7	8	0	0	15	30	2	2	0	0	2	0	38	68	106
2nd Year Dental	9	26	2	2	0	0	9	12	1	0	13	26	1	2	0	0	2	1	37	69	106
3rd Year Dental	9	22	0	2	0	0	5	12	0	0	28	19	2	2	0	0	2	3	46	60	106
4th Year Dental	10	17	1	6	0	0	7	11	0	0	19	21	7	3	0	0	2	0	46	58	104
Total SOD - DDS	39	88	4	15	0	0	28	43	1	0	75	96	12	9	0	0	8	4	167	255	422
School of Dentistry - Academic																					
Graduate	1	6	0	0	3	3	2	5	0	0	7	13	1	3	0	0	1	1	15	31	46
Post Graduate Certificate	3	8	0	2	2	5	2	1	1	0	5	10	1	1	0	0	1	1	15	28	43
Undergraduate Certificate	1	7				1		2			2								1	12	13
Undergraduate	3	15	0	3	0	3	2	15	0	0	0	3	1	0	0	0	0	1	6	40	46
Total SOD Acad	8	36	0	5	5	12	6	23	1	0	12	28	3	4	0	0	2	3	37	111	148
Graduate School of Biomedical Sciences																					
Non-Degree	0	0	0	2	1	0	0	0	0	0	3	0	0	0	0	0	0	0	4	2	6
Certificate	1	3	0	1	0	0	2	5	0	0	1	3	4	1	0	0	0	0	8	13	21
Graduate	12	30	7	17	81	120	19	31	0	0	47	68	3	17	0	0	2	8	171	291	462
Total GSBS	13	33	7	20	82	120	21	36	0	0	51	71	7	18	0	0	2	8	183	306	489
McGovern Medical School																					
1st Year Medical	38	47	8	11	0	0	20	18	0	0	41	48	1	3	0	0	2	4	110	131	241
2nd Year Medical	36	42	6	10	0	0	22	12	0	0	42	58	3	3	0	0	7	3	116	128	244
3rd Year Medical	34	37	9	11	0	0	20	26	0	0	47	49	6	2	0	0	1	4	117	129	246
4th Year Medical	20	26	6	11	0	0	17	20	0	0	54	61	6	6	0	0	3	5	106	129	235
Total MMS - MD	128	152	29	43	0	0	79	76	0	0	184	216	16	14	0	0	13	16	449	517	966
McGovern Medical School - Academic																					
Non-Degree	0	1	0	2	0	0	0	1	0	0	0	3	0	0	0	0	0	0	0	7	7
Certificate	0	1	0	0	42	37	0	1	0	0	7	3	0	3	0	0	0	0	49	45	94
Graduate	1	0	0	1	0	0	0	0	0	0	4	1	0	0	0	0	0	0	5	2	7
Total MMS - Acad	1	2	0	3	42	37	0	2	0	0	11	7	0	3	0	0	0	0	54	54	108
Cizik School of Nursing																					
Non-Degree	1	3	2	8	0	0	1	10	0	0	4	9	0	1	0	0	0	1	8	32	40
Undergraduate	24	84	2	52	0	1	14	121	0	0	10	71	1	4	0	1	7	9	58	343	401
Graduate	11	83	11	155	0	7	19	97	0	0	30	182	3	19	0	0	1	8	75	551	626
Total CSON	36	170	15	215	0	8	34	228	0	0	44	262	4	24	0	1	8	18	141	926	1,067
School of Public Health																					
Non-Degree	1	2	0	0	0	0	1	0	0	0	2	9	1	1	0	0	0	0	5	12	17
Certificate	3	15	0	8	0	1	3	21	0	0	3	13	2	2	0	0	1	0	12	60	72
Graduate	60	178	31	129	111	211	57	202	0	0	76	245	18	38	0	1	5	17	358	1021	1,379
Total SPH	64	195	31	137	111	212	61	223	0	0	81	267	21	41	0	1	6	17	375	1,093	1,468
Grand Total	310	709	100	467	272	430	258	667	3	2	487	1,004	77	144	0	2	40	72	1,547	3,497	5,044

Headcount Enrollment by Academic Program *Fall 2023*

Sources: Robert Jenkins and Tera Wright, Office of the Registrar

CBM001 Certified Enrollment Report to the Texas Higher Education Coordinating Board, October 2023

McWilliams School of Biomedical Informatics		Graduate School of Biomedical Sciences, cont'd		McGovern Medical School	
MS in Biomedical Informatics	299	Epigenetics & Molecular Carcinogenesis	0	Doctor of Medicine (MD)	966
PhD in Biomedical Informatics	46	Human & Molecular Genetics	0	MS in Clinical Research	108
Doctorate of Health Informatics (DHI)	31	Quantitative Sciences	0		
		Biostatistics, Bioinformatics & Systems Biology	0	Cizik School of Nursing	
School of Dentistry		Microbiology & Infectious Diseases	0	Bachelor of Science in Nursing (BSN)	401
Doctor of Dental Surgery (DDS)	422	Microbiology & Molecular Genetics	0	<u>Master of Science in Nursing (MSN)</u>	
<u>Master of Science in Dentistry (MSD)</u>		Therapeutics & Pharmacology	0	Nurse Practitioner	
Pediatric Dentistry	0	Immunology	0	Adult/Gerontology Acute Care	40
Orthodontics	7	Neuroscience	0	Adult/Gerontology Primary Care	3
Endodontics	10	<u>Specialized Master of Science (SMS)</u>		Emergency/Trauma	27
Prosthodontics	12	Genetic Counseling	20	Family Nurse Practitioner	148
Periodontics	11	Medical Physics	11	Psychiatric Mental Health	10
<u>Dental Postgraduate Certificate</u>		<u>Doctor of Philosophy (PhD)</u>		Nursing Education	5
Adv. Education in General Dentistry (AEGD)	7	Biomedical Sciences	86	Nursing Leadership & Administration	49
General Practice Residency (GPR)	7	Medical Physics	33	<u>BSN - DNP Nurse Practitioner (DNP)</u>	
Endodontics	0	Biochemistry & Cell Biology	17	Nurse Anesthesia	70
Oral and Maxillofacial Surgery	2	Biochemistry & Molecular Biology	1	Adult/Gerontology Acute Care	48
Orthodontics	7	Cell & Regulatory Biology	0	Adult/Gerontology Primary Care	12
Pediatric Dentistry	16	Cancer Biology	61	Family Nurse Practitioner	91
Periodontics	0	Clinical & Translational Sciences	0	Psychiatric Mental Health	53
Prosthodontics	4	Therapeutics & Pharmacology	6	Doctor in Nursing Practice (DNP)	76
Master of Science Dental Hygiene (MSDH)	6	Genetics & Epigenetics	37	Doctor of Philosophy in Nursing (PhD)	32
Bachelor of Science Dental Hygiene (BSDH)	46	Genes & Development	0	BSN - PhD Doctor of Philosophy in Nursing (PhD)	2
Certificate in Dental Hygiene	13	Epigenetics & Molecular Carcinogenesis	0		
		Human & Molecular Genetics	0		
Graduate School of Biomedical Sciences;		Immunology	50		
<u>Master of Science (MS)</u>		Microbiology & Infectious Diseases	17		
Biomedical Sciences	76	Microbiology & Molecular Genetics	0		
Biochemistry and Cell Biology	0	Neuroscience	31		
Biochemistry and Molecular Biology	0	Quantitative Sciences	43		
Cell and Regulatory Biology	0	Biostatistics, Bioinformatics & Systems Biology	0		
Cancer Biology	0				
Clinical & Translational Sciences	0				
Genetics & Epigenetics	0				
Genes & Development	0				

continued **Headcount Enrollment by Academic Program Fall 2023**

School of Public Health

<u>Master of Public Health (MPH)</u>		<u>Doctor of Public Health (DrPH)</u>	
<i>Austin</i>		<i>Austin</i>	
Epidemiology	48	Health Promotion/Health Education	6
Health Promotion/Health Education	11	<i>Brownsville</i>	
Public Health	99	Health Promotion/Health Education	6
<i>Brownsville</i>		<i>Dallas</i>	
Epidemiology	3	Health Promotion/Health Education	6
Health Promotion/Health Education	2	<i>El Paso</i>	
Public Health	12	Health Promotion/Health Education	3
<i>Dallas</i>		<i>San Antonio</i>	
Epidemiology	24	Community Health Practice	1
Health Promotion/Health Education	8	Environmental Health	1
Public Health	43	<i>Houston</i>	
<i>El Paso</i>		Community Health Practice	25
Environmental Health	1	Health Promotion/Health Education	24
Health Promotion/Health Education	2	Health Services Organizations	0
Health Care Management	11	Environmental Health	1
Public Health	16	<u>Doctor of Philosophy (PhD)</u>	
Public Health (MD/MPH El Paso)	13	<i>Austin</i>	
<i>San Antonio</i>		Behavioral Sciences and Health Promotion	18
Accelerated	0	Epidemiology	91
Environmental Health	5	<i>Brownsville</i>	
Epidemiology	19	Epidemiology	7
Health Promotion/Health Education	14	<i>Dallas</i>	
Public Health	59	Behavioral Sciences and Health Promotion	3
<i>Houston</i>		Epidemiology	12
Biostatistics	2	<i>El Paso</i>	
Community Health Practice	35	Environmental Sciences	
Environmental Health	29	Total Worker Health	6
Epidemiology	207	Environmental Disease Prevention	0
Health Promotion/Health Education	78	Health Promotion/Health Education	0
Health Services Organization	15	<i>San Antonio</i>	
Healthcare Management	94	Environmental Sciences	
Public Health	68	Total Worker Health	2
<u>Master of Science (MS)</u>		Environmental Disease Prevention	2
<i>Austin</i>		Epidemiology	10
Epidemiology	0	<i>Houston</i>	
<i>Brownsville</i>		Behavioral Sciences and Health Promotion	46
Epidemiology	1	Biostatistics	156
<i>Dallas</i>		Environmental Sciences	1
Epidemiology	1	Total Worker Health	6
<i>San Antonio</i>		Environmental Disease Prevention	10
Biostatistics	0	Epidemiology	0
Epidemiology	0	Management & Policy Sciences	52
<i>Houston</i>		Health Services Organizations	19
Biostatistics	34	Health Promotion/Health Education	0
Epidemiology	0	Grand Total	5,044
Environmental Sciences	0		

Headcount Enrollment by Residency *Fall 2014 - 2023*

Sources: Robert Jenkins and Tera Wright, Office of the Registrar

CBM001 Certified Enrollment Report to the Texas Higher Education Coordinating Board, October 2023

	2014	2015	2016	2017	2018	2019	2020	2021	2022	2023
McWilliams School of Biomedical Informatics										
Texas Resident	141	198	234	247	217	217	245	263	290	288
Out of State	12	15	18	10	2	3	5	4	10	35
Foreign	18	32	39	32	36	39	40	61	55	53
MSBMI Total	171	245	291	289	255	259	290	328	355	376
School of Dentistry										
Texas Resident	504	512	516	513	520	515	511	515	513	510
Out of State	22	26	28	36	36	52	49	43	43	35
Foreign	10	10	16	16	14	12	14	15	13	25
SOD Total	536	548	560	565	570	579	574	573	569	570
Graduate School of Biomedical Sciences										
Texas Resident	188	162	155	143	165	181	178	174	174	194
Out of State	115	124	121	125	127	118	118	107	109	101
Foreign	169	151	149	138	162	181	184	184	190	194
GSBS Total	472	437	425	406	454	480	480	465	473	489
McGovern Medical School										
Texas Resident	926	937	954	965	964	950	957	935	940	941
Out of State	68	77	58	53	58	59	68	61	57	49
Foreign	51	46	63	59	75	62	91	85	89	84
MMS Total	1,045	1,060	1,075	1,077	1,097	1,071	1,116	1,081	1,086	1,074
Cizik School of Nursing										
Texas Resident	1,047	1,222	1,450	1,611	1,698	1,604	1,614	1,583	1,235	1,054
Out of State	14	13	16	22	15	16	14	13	11	11
Foreign	11	12	11	14	9	6	8	6	13	2
CSON Total	1,072	1,247	1,477	1,647	1,722	1,626	1,636	1,602	1,259	1,067
School of Public Health										
Texas Resident	876	875	882	945	940	999	1,217	1,314	1,162	1,055
Out of State	126	137	116	122	104	107	121	146	137	118
Foreign	258	262	225	190	193	196	177	249	279	295
SPH Total	1,260	1,274	1,223	1,257	1,237	1,302	1,515	1,709	1,578	1,468
UTHealth Houston Total										
Texas Resident	3,682	3,906	4,191	4,424	4,504	4,466	4,722	4,784	4,314	4,042
Out of State	357	392	357	368	342	355	375	374	367	349
Foreign	517	513	503	449	489	496	514	600	639	653
Grand Total	4,556	4,811	5,051	5,241	5,335	5,317	5,611	5,758	5,320	5,044

Full-time Equivalent (FTE) Student Enrollment *Fall 2014 - 2023*

Sources: Robert Jenkins and Tera Wright, Office of the Registrar

	2014	2015	2016	2017	2018
McWilliams School of Biomedical Informatics	106.11	140.81	173.00	169.14	144.73
School of Dentistry	522.83	534.88	545.10	547.32	555.09
Graduate School of Biomedical Sciences	440.67	408.40	400.49	383.19	414.43
McGovern Medical School	987.56	1,009.56	1,004.44	1,006.22	1,012.83
Cizik School of Nursing	927.25	1,023.89	1,185.18	1,317.53	1,363.53
School of Public Health	938.22	958.03	932.17	949.39	945.00
Grand Total UTHealth Houston	3,922.64	4,075.57	4,240.38	4,372.79	4,435.61

	2019	2020	2021	2022	2023
McWilliams School of Biomedical Informatics	143.91	174.80	212.83	222.33	243.46
School of Dentistry	562.65	560.00	556.11	553.79	568.35
Graduate School of Biomedical Sciences	439.31	434.51	439.68	447.47	462.26
McGovern Medical School	1,000.11	1,009.34	997.79	1,006.56	1,000.83
Cizik School of Nursing	1,284.89	1,286.49	1,254.69	1,021.37	865.05
School of Public Health	979.45	1,186.33	1,416.60	1,224.52	1,111.42
Grand Total	4,410.32	4,651.47	4,877.70	4,476.04	4,251.37

GSBS Students by Institutional Affiliation *Fall 2014 - 2023*

Source: Karen Weinberg, Graduate School of Biomedical Sciences

¹ Other includes registered degree seeking students who have not formally chosen an advisor. It does not include non-degree students.

Note: Totals do not match to the Certified CBM001 Enrollment Report due to timing.

	Fall 2014	Fall 2015	Fall 2016	Fall 2017	Fall 2018	Fall 2019	Fall 2020	Fall 2021	Fall 2022	Fall 2023
UTHealth Houston										
School of Dentistry	0	0	0	1	2	3	4	4	4	4
McGovern Medical School	98	84	95	100	92	83	86	91	100	102
School of Public Health	3	0	0	2	4	2	0	0	0	0
McWilliams School of Biomedical Informatics	0	0	0	0	0	0	0	0	0	2
subtotal UTHealth Houston	101	84	95	103	98	88	90	95	104	108
UT MD Anderson Cancer Center	265	243	222	229	216	250	263	252	253	260
TAMU Institute of Biosciences and Technology	2	1	1	0	0	0	0	0	0	0
Other ¹	74	87	86	77	106	109	103	106	107	109
Grand Total GSBS	442	415	404	409	420	447	456	453	464	477

Postdoctoral Research Fellows *Fall 2014 - 2023*

Source: Leslie Beckman, Office of Postdoctoral Affairs

Fall	Total
2014	208
2015	224
2016	239
2017	241
2018	230
2019	218
2020	222
2021	232
2022	212
2023	249

Licensure Examination Results 2023

Sources: Dana McDowelle, PhD, McGovern Medical School; Robert Spears, PhD, School of Dentistry; Melissa D. Ethington, PhD, RN, Cizik School of Nursing; Claire Singletary, MS, CGC, Graduate School of Biomedical Sciences

2023 Dental and Dental Hygiene National Board and Licensure Exams

	Total Examined	Total Passed	Percent Passed
DDS INBDE	98	97	99%
Dental Hygiene National Board Exam	25	24	96%
CDCA/ADEX Clinical Licensure Exam			
DDS	101	99	98%
Dental Hygiene	25	25	100%

2021-2022 Texas State Board of Nursing Examiners Results

Note: Official 2022-2023 pass rates were not available as of press time.

	Total Examined	Total Passed	Percent Passed
NCLEX - RN	343	314	91.55%

2022-2023 United States Medical Licensing Examination (USMLE) Results

	Total Examined	Total Passed	Percent Passed
USMLE Step 1 ¹	241	231	96%
USMLE Step 2	221	219	99%

¹ Interim Report on Performance of Examinees Taking Step 1 for the first time in 2023 through September 16.

2023 American Board of Genetic Counseling Exam Results

	Total Examined	Total Passed	Percent Passed
ABGC (February 2023, first time takers)	2	2	100%
ABGC (August 2023, first time takers)	5	4	80%

Degrees Conferred by School FY 2016 - 2023

Sources: Robert Jenkins and Tera Wright, Office of the Registrar
CBM009 Certified Graduation Report to the Texas Higher Education Coordinating Board, October 2023

¹ Effective 2015, only Dental Hygiene Certificates are recorded as Certificates. Post Graduate Certificates (PGCRT) are recorded separately.

² In all degree tables, Dental Post Graduate Certificates (PGCRT) totals include Advanced Education-General Dentistry (AEGD) and General Practice Residency (GPR) programs that are not reported to the Coordinating Board.

	FY 2016	FY 2017	FY 2018	FY 2019	FY 2020	FY 2021	FY 2022	FY 2023
McWilliams School of Biomedical Informatics								
Master's	40	48	59	48	44	52	66	75
Doctoral	3	4	6	3	2	2	7	18
Total MSBMI	43	52	65	51	46	54	73	93
School of Dentistry								
Bachelor's	34	36	36	35	39	41	26	26
Certificate	5	3	4	2	0	0	6	2
Master's	30	21	25	29	27	25	28	30
Post Graduate Certificate (PGCRT) ^{1, 2}	35	39	37	45	41	33	35	34
Professional	100	99	95	95	103	96	108	101
Total SOD	204	198	197	206	210	195	203	193
Graduate School of Biomedical Sciences								
Master's	20	19	21	29	24	38	29	25
Doctoral	63	77	64	48	40	63	51	58
Total GSBS	83	96	85	77	64	101	80	83
McGovern Medical School								
Master's	4	0	12	0	6	11	1	10
Professional	239	231	222	243	242	238	231	240
Total MMS	243	231	234	243	248	249	232	250
Cizik School of Nursing								
Bachelor's	386	402	437	462	428	426	396	349
Master's	130	123	269	294	270	248	199	180
Doctoral	26	45	37	76	60	48	71	91
Total CSON	542	570	743	832	758	722	666	620
School of Public Health								
Master's	320	314	342	300	346	357	409	432
Doctoral	63	68	60	57	78	64	69	66
Total SPH	383	382	402	357	424	421	478	498
UTHealth Houston								
Bachelor's	420	438	473	497	467	467	422	375
Certificate	5	3	4	2	0	0	6	2
Master's	544	525	728	700	717	731	732	752
Doctoral	155	194	167	184	180	177	198	233
Post Graduate Certificate (PGCRT)	35	39	37	45	41	33	35	34
Professional	339	330	317	338	345	334	339	341
Grand Total	1,498	1,529	1,726	1,766	1,750	1,742	1,732	1,737

This page is intentionally blank

Degrees Conferred by Academic Program FY 2023

Sources: Robert Jenkins and Tera Wright, Office of the Registrar

CBM009 Certified Graduation Report to the Texas Higher Education Coordinating Board, October 2023

Degrees Conferred Fall 2022, Spring 2023, Summer 2023

McWilliams School of Biomedical Informatics		Graduate School of Biomedical Sciences, cont'd		McGovern Medical School	
MS in Biomedical Informatics	75	Human & Molecular Genetics	0	Doctor of Medicine (MD)	240
PhD in Biomedical Informatics	12	Quantitative Sciences	0	MS in Clinical Research	10
Doctorate of Health Informatics (DHI)	6	Biostatistics, Bioinformatics & Systems Biology	0		
		Microbiology & Infectious Diseases	0	Cizik School of Nursing	
		Microbiology & Molecular Genetics	0	Bachelor of Science in Nursing (BSN)	349
School of Dentistry		Therapeutics & Pharmacology	0	<u>BSN - DNP Nurse Practitioner</u>	
Doctor of Dental Surgery (DDS)	101	Immunology	0	Nurse Anesthesia	19
<u>Master of Science in Dentistry (MSD)</u>		Neuroscience	0	Adult/Gerontology Acute Care	6
Pediatric Dentistry	8	<u>Specialized Master of Science (SMS)</u>		Adult/Gerontology Primary Care	1
Orthodontics	7	Genetic Counseling	10	Family Nurse Practitioner	10
Endodontics	5	Medical Physics	1	Psychiatric Mental Health	4
Prosthodontics	3	<u>Doctor of Philosophy (PhD)</u>		<u>Master of Science in Nursing (MSN)</u>	
Periodontics	3	Biomedical Sciences	0	Nurse Practitioner	
<u>Dental Postgraduate Certificate</u>		Medical Physics	14	Adult/Gerontology Acute Care	28
Adv. Ed. in General Dentistry (AEGD)	0	Biochemistry & Cell Biology	4	Adult/Gerontology Primary Care	6
General Practice Residency (GPR)	0	Biochemistry & Molecular Biology	0	Family Nurse Practitioner	102
Endodontics	5	Cell & Regulatory Biology	0	Psychiatric Mental Health	26
Oral and Maxillofacial Surgery	6	Cancer Biology	11	Nursing Education	0
Orthodontics	7	Clinical & Translational Sciences	0	Nursing Leadership & Administration	18
Pediatric Dentistry	8	Therapeutics & Pharmacology	2	Doctor in Nursing Practice (DNP)	43
Periodontics	4	Genetics & Epigenetics	5	Doctor of Philosophy in Nursing (PhD)	8
Prosthodontics	3	Genes & Development	1		
Bachelor of Science Dental Hygiene (BSDH)	26	Epigenetics & Molecular Carcinogenesis	0		
Certificate in Dental Hygiene	2	Human & Molecular Genetics	0		
Master of Science in Dental Hygiene	4	Immunology	9		
		Microbiology & Infectious Diseases	4		
Graduate School of Biomedical Sciences		Microbiology & Molecular Genetics	0		
<u>Master of Science (MS)</u>		Neuroscience	1		
Biomedical Sciences	13	Quantitative Sciences	7		
Biochemistry and Cell Biology	0	Biostatistics, Bioinformatics & Systems Biology	0		
Biochemistry and Molecular Biology	0				
Cell and Regulatory Biology	0				
Cancer Biology	1				
Clinical & Translational Sciences	0				
Genetics & Epigenetics	0				
Genes & Development	0				
Epigenetics & Molecular Carcinogenesis	0				

continued **Degrees Conferred by Academic Program FY 2023**

Degrees Conferred Fall 2022, Spring 2023, Summer 2023

School of Public Health

<u>Master of Public Health (MPH)</u>		<u>Doctor of Public Health (DrPH)</u>	
<i>Austin</i>		<i>Austin</i>	
Epidemiology	29	Health Promotion/Health Education	1
Health Promotion/Health Education	13	<i>Brownsville</i>	
Public Health	35	Health Promotion/Health Education	2
<i>Brownsville</i>		<i>Dallas</i>	
Epidemiology	5	Health Promotion/Health Education	0
Health Promotion/Health Education	0	<i>El Paso</i>	
Public Health	3	Health Promotion/Health Education	3
<i>Dallas</i>		<i>San Antonio</i>	
Epidemiology	14	Community Health Practice	0
Health Promotion/Health Education	0	<i>Houston</i>	
Public Health	25	Community Health Practice	1
<i>El Paso</i>		Health Promotion/Health Education	
Environmental Health	0	Environmental Sciences	1
Health Promotion/Health Education	0	<u>Doctor of Philosophy (PhD)</u>	
Public Health	3	<i>Austin</i>	
Public Health (MD/MPH El Paso)	2	Behavioral Sciences & Health Promotion	1
<i>San Antonio</i>		Epidemiology	3
Accelerated	0	<i>Brownsville</i>	
Environmental Health	0	Epidemiology	2
Epidemiology	0	<i>Dallas</i>	
Health Promotion/Health Education	0	Behavioral Sciences & Health Promotion	1
Public Health	20	Epidemiology	5
<i>Houston</i>		<i>El Paso</i>	
Biostatistics	1	Environmental Sciences	
Community Health Practice	11	Total Worker Health	0
Environmental Health	14	Environmental Disease Prevention	0
Epidemiology	111	<i>San Antonio</i>	
Health Promotion/Health Education	60	Environmental Sciences	
Health Services Organization	44	Total Worker Health	0
Healthcare Management	0	Environmental Disease Prevention	0
Public Health	28	Epidemiology	0
<u>Master of Science (MS)</u>		<i>Houston</i>	
<i>Austin</i>		Behavioral Sciences & Health Promotion	7
Epidemiology	0	Biostatistics	13
<i>Brownsville</i>		Environmental Sciences	1
Epidemiology	0	Total Worker Health	
<i>Dallas</i>		Environmental Disease Prevention	
Epidemiology	0	<i>San Antonio</i>	
<i>San Antonio</i>		Epidemiology	13
Epidemiology	0	Health Services Organizations	2
<i>Houston</i>		Healthcare Management & Health Policy	7
Biostatistics	14	Grand Total	1,737
Epidemiology	0		
Environmental Sciences	0		

Degrees Conferred by Level & Ethnicity FY 2023

Sources: Robert Jenkins and Tera Wright, Office of the Registrar

CBM009 Certified Graduation Report to the Texas Higher Education Coordinating Board, October 2023

	Race/Ethnicity									Grand Total
	American Indian	Asian	Black	Hispanic	Internat'l	Multi-Racial	Pacific Islander	Unidentified	White	
McWilliams School of Biomedical Informatics										
MS	0	19	3	11	12	1	0	8	21	75
DHI	0	0	2	0	0	0	0	0	4	6
PhD	0	1	0	2	7	0	0	1	1	12
Total MSBMI	0	20	5	13	19	1	0	9	26	93
School of Dentistry										
BS	0	4	0	18	0	1	0	1	2	26
UG Certificate	0	0	0	0	0	0	0	1	1	2
DDS	0	37	3	14	2	2	0	11	32	101
MS	0	8	3	5	3	1	0	0	10	30
PGCRT	0	9	2	5	4	1	0	0	13	34
Total SOD	0	58	8	42	9	5	0	13	58	193
Graduate School of Biomedical Sciences										
MS	0	4	1	3	3	1	0	1	12	25
PhD	0	3	1	4	31	1	0	8	10	58
Total GSBS	0	7	2	7	34	2	0	9	22	83
McGovern Medical School										
MS	0	1	1	1	0	0	0	1	6	10
MD	2	69	18	23	0	10	0	8	110	240
Total MMS	2	70	19	24	0	10	0	9	116	250
Cizik School of Nursing										
BSN	0	107	51	101	1	5	1	11	72	349
MSN	0	35	35	40	1	4	1	2	62	180
DNP	0	10	30	18	0	3	0	2	20	83
PhD	0	0	3	0	0	0	0	0	5	8
Total CSON	0	152	119	159	2	12	2	15	159	620
School of Public Health										
MPH	0	91	54	92	35	10	1	17	118	418
MS	0	3	0	2	5	0	0	2	2	14
DrPH	0	0	2	1	2	2	0	0	4	11
PhD	1	3	4	8	22	0	0	8	9	55
Total SPH	1	97	60	103	64	12	1	27	133	498
Grand Total	3	404	213	348	128	42	3	82	514	1,737

Profile of Medical Residents in ACGME Accredited Programs *September 2023*

Source: April Bass, McGovern Medical School

¹ Aggregate reporting requirements for ACGME differ from federal aggregate postsecondary reporting requirements. Hispanic/Latino ethnicity is included in the race categories listed below. In this Profile of Medical Residents, 161 of the 1,189 medical residents reported a Hispanic/Latino ethnicity.

Specialty	Male	Female	White	Black	Pacific Islander	Asian	American Indian	Multi-Racial	Other	Total
Adolescent Medicine	0	2	0	0	0	2	0	0	0	2
Adult Cardiothoracic Anesthesiology	1	3	2	0	0	1	0	1	0	4
Adult Reconstructive Orthopaedics	3	0	1	0	0	2	0	0	0	3
Advanced Heart Failure and Transplant Cardiology	1	0	1	0	0	0	0	0	0	1
Anesthesiology	60	51	55	10	0	39	0	7	0	111
Blood Banking/Transfusion Medicine	1	0	1	0	0	0	0	0	0	1
Brain Injury Medicine	0	1	0	0	0	1	0	0	0	1
Cardiovascular Disease	28	7	12	0	0	20	0	3	0	35
Child & Adolescent Psychiatry	2	9	5	0	0	6	0	0	0	11
Child Abuse Pediatrics	0	3	2	0	0	1	0	0	0	3
Child Neurology	3	6	4	0	0	4	0	1	0	9
Clinical Cardiac Electrophysiology	5	0	2	0	0	3	0	0	0	5
Clinical Informatics	1	0	1	0	0	0	0	0	0	1
Clinical Neurophysiology	0	3	2	0	0	1	0	0	0	3
Colon and Rectal Surgery	2	2	2	0	0	2	0	0	0	4
Combined Adult & Pediatric Nephrology	0	1	0	0	0	0	1	0	0	1
Critical Care Anesthesia	1	1	2	0	0	0	0	0	0	2
Dermatology	5	16	12	3	0	6	0	0	0	21
Dermatopathology	1	0	1	0	0	0	0	0	0	1
Diagnostic Radiology	25	21	25	3	0	14	0	3	1	46
Emergency Medical Services	1	1	1	1	0	0	0	0	0	2
Emergency Medicine	27	33	30	14	0	16	0	0	0	60
Endocrinology, Diabetes & Metabolism	1	5	2	0	0	4	0	0	0	6
Epilepsy	2	1	2	0	0	1	0	0	0	3
Family Practice	19	18	10	5	0	21	0	1	0	37
Gastroenterology	8	5	2	2	0	9	0	0	0	13
General Surgery	35	25	37	3	0	18	1	1	0	60
Geriatric Medicine (IMG)	2	1	0	2	0	1	0	0	0	3
Hematology and Medical Oncology	2	6	2	0	0	5	1	0	0	8
Hospice & Palliative Medicine	1	2	0	0	0	3	0	0	0	3
Infectious Diseases	7	4	7	0	0	2	0	2	0	11
Internal Medicine	73	62	54	13	0	61	0	7	0	135
Internal Medicine/Pediatrics	20	11	19	2	0	10	0	0	0	31
Interventional Cardiology	3	0	1	0	0	2	0	0	0	3
Interventional Radiology - Integrated	11	3	9	0	0	5	0	0	0	14
Maternal Fetal Medicine	2	10	9	0	0	3	0	0	0	12
Medical Biochemical Genetics	1	0	1	0	0	0	0	0	0	1
Neonatal Perinatal Medicine	2	7	7	0	0	2	0	0	0	9
Nephrology	3	7	4	1	0	5	0	0	0	10
Neurological Surgery	14	6	13	0	0	6	0	1	0	20
Neurology	22	19	21	2	0	18	0	0	0	41
Neuroradiology	3	0	0	0	0	2	1	0	0	3
Obstetric Anesthesiology	1	2	1	1	0	1	0	0	0	3
Obstetrics & Gynecology	5	46	23	14	0	13	0	1	0	51
Occupational Medicine	5	0	3	1	0	0	0	1	0	5
Ophthalmology	7	9	5	1	0	10	0	0	0	16
Orthopaedic Sports Medicine	3	1	2	1	0	1	0	0	0	4
Orthopaedic Surgery	22	7	20	0	0	5	1	3	0	29
Otolaryngology	10	5	9	0	0	4	0	2	0	15
Pathology	15	13	13	1	0	13	0	1	0	28
Pediatric Anesthesiology	0	0	0	0	0	0	0	0	0	0
Pediatric Cardiology	5	4	5	2	0	2	0	0	0	9
Pediatric Critical Care Medicine	5	6	6	1	0	4	0	0	0	11
Pediatric Emergency Medicine	1	3	2	0	0	2	0	0	0	4
Pediatric Endocrinology	1	2	2	0	0	1	0	0	0	3
Pediatric Gastroenterology	0	6	2	0	0	3	0	1	0	6
Pediatric Hospital Medicine	0	2	2	0	0	0	0	0	0	2
Pediatric Infectious Diseases	1	3	3	0	0	0	0	1	0	4
Pediatric Nephrology	2	1	3	0	0	0	0	0	0	3
Pediatric Pulmonology	0	3	2	1	0	0	0	0	0	3
Pediatric Surgery	1	1	2	0	0	0	0	0	0	2
Pediatrics	17	65	41	8	0	28	1	4	0	82
Pediatrics/Medical Genetics and Genomics	1	3	4	0	0	0	0	0	0	4
Physical Medicine & Rehabilitation	8	8	10	3	0	3	0	0	0	16
Plastic & Reconstructive Surgery	5	1	3	1	0	2	0	0	0	6
Plastic Surgery - Integrated	7	1	6	0	0	2	0	0	0	8
Psychiatry	20	37	31	4	0	21	0	1	0	57
Pulmonary Disease & Critical Care Medicine	15	8	8	2	0	12	0	1	0	23
Rheumatology	4	2	1	0	0	4	0	1	0	6
Sleep Medicine	1	1	2	0	0	0	0	0	0	2
Spinal Cord Injury Medicine	1	1	0	0	0	1	0	1	0	2
Sports Medicine (FP)	1	1	1	0	0	1	0	0	0	2
Surgical Critical Care	2	2	4	0	0	0	0	0	0	4
Urology	8	7	10	0	0	5	0	0	0	15
Vascular Neurology	4	2	3	0	0	3	0	0	0	6
Vascular Surgery	1	0	0	0	0	0	0	1	0	1
Vascular Surgery - Integrated	5	2	5	0	0	1	0	1	0	7
Grand Total	582	607	595	102	0	438	6	47	1	1,189

McGovern Medical School Graduating Class Specialty Choices *May 2023*

Source: Dana McDowelle, PhD, McGovern Medical School

Note: Of the 242 graduating seniors who participated in the National Residency Match Program (NRMP), 144 (60%) will stay in Texas for their first year of postgraduate training, and 66 (27%) matched to McGovern Medical School programs for the duration of their training. 103 members of the class (43%) matched to primary care specialties.

Specialty	Number	Percentage
Anesthesiology	16	7%
Child Neurology	6	2%
Dermatology	5	2%
Diagnostic Radiology	10	4%
Emergency Medicine	15	6%
Emergency Medicine/Family Medicine	1	<1%
Family Medicine	19	8%
Internal Medicine	45	19%
Internal Medicine (Preliminary)	6	2%
Internal Medicine/ Pediatrics	2	<1%
Internal Medicine/Psychiatry	1	<1%
Interventional Radiology	1	<1%
Neurosurgery	1	<1%
Neurology	3	1%
Obstetrics & Gynecology	8	3%
Oral Maxillofacial Surgery	3	1%
Ophthalmology	6	2%
Orthopedic Surgery	9	4%
Otolaryngology	1	<1%
Pathology	2	<1%
Pediatrics	26	11%
Pediatrics/Psychiatry	1	<1%
Physical Medicine & Rehabilitation	7	3%
Plastic Surgery	4	2%
Psychiatry	19	7%
Radiation Oncology	1	<1%
Surgery (General)	10	4%
Surgery (Preliminary)	8	3%
Urology	5	2%
Vascular Surgery	1	<1%
Deferred	1	<1%
Grand Total	242	

School of Dentistry Residents & Postgraduate Students *Fall 2023*

Source: Robert Spears, PhD, School of Dentistry

Note: Three types of students comprise the UTHealth Houston School of Dentistry's Advanced Education Programs: postgraduate, graduate, and resident.

- A postgraduate student is a dentist registering and paying tuition and fees for courses leading to a certificate in the specialty area.
- A graduate student is a dentist registering and paying tuition and fees for courses leading to a Master of Science in Dentistry degree and a certificate in a dental specialty area.
- A resident is a dentist who receives training in a specialty area, is paid a stipend, and who receives a certificate of completion.
- Residencies are available only in oral and maxillofacial surgery and pathology.

Specialty	Total	Gender		Amer Indian	Asian	Black	Hispanic	Two or more	Unidentified	White
		M	F							
Endodontics	10	3	7	0	3	0	3	1	0	3
General Dentistry (GPR)	7	6	1	0	2	1	1	0	0	3
General Dentistry (AEGD)	7	4	3	0	1	0	1	4	0	1
Oral & Maxillofacial Surgery	30	23	7	0	4	1	2	0	1	22
Orthodontics & Dentofacial Orthopedics	14	6	8	0	2	0	2	0	0	10
Pediatric Dentistry	16	3	13	1	8	1	2	0	0	4
Periodontics	11	5	6	0	3	0	1	0	1	6
Prosthodontics	15	3	12	0	7	0	0	0	0	8
Dental Informatics	1	0	1	0	0	1	0	0	0	0
Oral Pathology	2	0	2	0	2	0	0	0	0	0
Grand Total SOD	113	53	60	1	32	4	12	5	2	57

Medical (MCAT) and Dental (DAT) Applicant Scores *Fall 2023 Entering Class*

Sources: Robert Spears, PhD, School of Dentistry; Dana McDowelle, PhD, McGovern Medical School

Applicant Average Medical College Admission Test (MCAT) Scores Fall 2023 Entering Class

Subject	All Applicants	Enrolled Applicants
Biological and Biochemical Foundations of Living Systems	126.8	128.1
Chemical and Physical Foundations of Biological Systems	126.7	128.0
Critical Analysis and Reasoning Skills	126.1	126.9
Psychological, Social, and Biological Foundations of Behavior	127.7	129.0
Applicant Total Score	507.3	512.0
Applicant Average Overall GPA	3.70	3.88

Applicant Average Dental Aptitude Test (DAT) Scores Fall 2023 Entering Class

Subject	All Applicants	Enrolled Applicants
Academic Average AA	19.6	21.9
Perception Ability MA	19.3	20.6
Quantitative Reasoning	19.0	21.5
Reading Comprehension	21.1	23.0
Biology	19.1	21.7
Inorganic Chemistry	19.4	21.8
Organic Chemistry	19.1	21.3
Total Science	19.1	21.3
Applicant Average Overall GPA	3.58	3.82

Tuition & Fees *Fall 2023 & Spring 2024*

Source: Sue Thomey, Bursar's Office

Notes:

- Fee totals do not represent the full cost of education; additional fees may be assessed depending upon program year and courses taken.
- Online courses may charge an additional alternative instruction fee.
- All students pay a mandatory graduation fee (\$100) when applicable.
- An Archer Program Fee (\$3,900) is charged to all students accepted to the Archer fellowship program in Washington DC.
- For full fee detail, please go to the Bursar's Office website at <https://inside.uth.edu/finance/bursars/student/tuition-and-fees.htm>

Level	Resident	Non-Resident
Undergraduate - Nursing		
Tuition (30 semester credit hours)	\$8,190.00	\$33,330.00
Fees	1,842.06	1,842.06
Total Undergraduate (BSN)	\$10,032.06	\$35,172.06
Undergraduate - Dental Hygiene		
Tuition (30 semester credit hours)	\$5,280.00	\$17,880.00
Fees	3,148.06	3,593.06
Total Undergraduate (BSDH)	\$8,428.06	\$21,473.06
Graduate - Biomedical Informatics		
Tuition (24 semester credit hours)	\$6,240.00	\$21,120.00
Fees	2,308.06	2,308.06
Total Graduate - MSBMI	\$8,548.06	\$23,428.06
Graduate - Biomedical Sciences		
Tuition (24 semester credit hours)	\$5,952.00	\$16,032.00
Fees	278.06	278.06
Total Graduate - GSBS	\$6,230.06	\$16,310.06
Graduate - Clinical Research		
Tuition (24 semester credit hours)	\$2,304.00	\$12,384.00
Fees	272.81	272.81
Total Graduate - MSCR	\$2,576.81	\$12,656.81
Graduate Dental Hygiene		
Tuition (24 semester credit hours)	\$7,152.00	\$27,024.00
Fees	1,253.06	1,698.06
Total Graduate - MSDH	\$8,405.06	\$28,722.06
Graduate - Dental Advanced Ed		
Tuition (24 semester credit hours)	\$4,608.00	\$19,536.00
Fees	6,666.15	6,666.15
Total Graduate - Dental Adv Ed	\$11,274.15	\$26,202.15
Graduate - Nursing		
Tuition (24 semester credit hours)	\$8,568.00	\$28,008.00
Fees	1,284.06	1,284.06
Total Graduate - CSON	\$9,852.06	\$29,292.06
Graduate - Public Health		
Tuition (24 semester credit hours)	\$6,888.00	\$25,800.00
Fees	7,085.06	7,085.06
Total Graduate - SPH	\$13,973.06	\$32,885.06
Professional - Medical (MD)		
Tuition	\$19,521.00	\$26,125.00
Fees	5,675.75	5,675.75
Total Professional - MD	\$25,196.75	\$31,800.75
Professional - Dental (DDS)		
Tuition	\$34,527.00	\$54,534.00
Fees	7,471.75	7,471.75
Total Professional - DDS	\$41,998.75	\$62,005.75

Student Financial Aid Profile *FY 2016 - 2023*

Source: Heather Beckles-Bright and James Fore, Office of Student Financial Services

	FY 2016	FY 2017	FY 2018	FY 2019	FY 2020	FY 2021	FY 2022	FY 2023
Federal Grant Awards								
FPLP – Perkins ^a	\$0	\$0	\$0	\$0	\$0	\$0	\$0	\$0
HPSLP – Dental	18,520	0	0	0	0	0	0	0
HPSLP – Medical	0	0	0	0	0	0	0	0
Nursing SLP – undergraduate	0	0	0	0	0	0	0	0
Nursing SLP – graduate	0	0	0	0	0	0	0	0
NFLP	28,242	5,000	0	0	0	0	0	0
LDS – Dental	0	6,507	0	0	0	0	0	0
LDS – Medical	0	0	0	0	0	0	0	0
Federal Grant Total	\$46,762	\$11,507	\$0	\$0	\$0	\$0	\$0	\$0
Institutional Matching								
FPLP – Perkins ^a	\$0	\$0	\$0	\$0	\$0	\$0	\$0	\$0
HPSLP – Dental	2,058	0	0	0	0	0	0	0
HPSLP – Medical	0	0	0	0	0	0	0	0
Nursing SLP – undergraduate	0	0	0	0	0	0	0	0
Nursing SLP – graduate	0	0	0	0	0	0	0	0
NFLP	3,138	556	0	0	0	0	0	0
LDS – Dental	0	723	0	0	0	0	0	0
LDS – Medical	0	0	0	0	0	0	0	0
Institutional Matching Total	\$5,196	\$1,279	\$0	\$0	\$0	\$0	\$0	\$0
Collections^b								
FPLP – Perkins ^a	\$761,850	\$654,783	\$649,450	\$573,721	\$470,738	\$442,904	\$219,600	\$322,106
HPSLP – Dental	874,297	544,471	794,322	655,400	589,602	932,039	668,933	525,698
Nursing SLP – GR	16,993	11,730	27,194	16,705	20,577	18,391	13,733	7,398
LDS – Dental ^d	94,663	87,347	92,774	63,184	33,466	130,228	45,844	57,470
LDS – Medical ^d	163,342	186,330	209,738	179,216	113,993	108,222	77,909	124,847
NFLP ^d	23,394	49,745	38,328	19,804	24,113	6,339	8,086	10,339
Collections Total	\$1,953,911	\$1,542,650	\$1,816,706	\$1,517,407	\$1,274,237	\$1,638,749	\$1,034,105	\$1,047,858
Total Available in Federal Loan Funds	\$2,005,869	\$1,555,436	\$1,816,706	\$1,517,407	\$1,274,237	\$1,638,749	\$1,034,105	\$1,047,858
Default Rates^c								
FPLP – Perkins ^a	0.00%	2.99%	0.00%	4.23%	0.67%	0.00%	0.00%	0.00%
HPSLP – Dental	0.49%	0.61%	0.44%	0.42%	0.40%	0.35%	0.34%	0.74%
Nursing SLP – graduate	0.92%	0.82%	0.77%	1.79%	0.68%	0.66%	0.65%	3.05%
LDS – Dental	0.40%	0.24%	0.02%	0.00%	0.00%	0.00%	0.00%	3.11%
LDS – Medical	2.38%	1.86%	1.70%	0.48%	0.43%	0.43%	0.37%	1.73%
NFLP ^d	9.83%	3.03%	7.05%	0.00%	0.00%	0.00%	0.00%	2.20%

Legend of Award abbreviations

FPLP – Federal Perkins Loan Program
HPSLP - Health Professions Student Loan Program
LDS – Loans for Disadvantaged Students
SLP – Student Loan Program
UG - Undergraduate
GR - Graduate
NFLP – Nursing Faculty Loan Program

^a On June 30, 1993, the Department of Education initiated a new default rate calculation for the Perkins Loan Program. The new default rate calculation, called the Cohort Default Rate, looks at borrowers entering repayment in a specific one year period. As of June 30, 2023, the Cohort Default Rate for the Perkins Loan Program was 0.00%, for the year ending June 30, 2023.

^b Principal, interest, investment income and late fees.

^c As of June 30, 2023 overall default rates.

Total Student Financial Aid Awards by School *FY 2014 - 2023*

Sources: Heather Beckles-Bright and James Fore, Office of Student Financial Services

	FY 2014		FY 2015		FY 2016		FY 2017		FY 2018	
	#	Award	#	Award	#	Award	#	Award	#	Award
McWilliams School of Biomedical Informatics	55	\$419,406	66	\$805,290	71	\$694,693	59	\$524,437	56	\$738,929
School of Dentistry	393	15,392,622	395	15,915,038	424	18,436,165	443	19,471,306	429	19,629,668
Graduate School of Biomedical Sciences	100	1,208,947	95	1,084,073	90	903,085	112	1,039,511	104	1,165,567
McGovern Medical School	702	24,272,613	657	24,144,860	684	25,229,960	693	25,465,068	711	25,902,186
Cizik School of Nursing	841	13,003,621	848	13,108,331	920	15,630,981	1,076	18,464,162	1,206	23,244,493
School of Public Health	462	6,426,508	496	6,770,923	492	6,872,444	524	7,954,023	555	9,396,458
Grand Total	2,553	\$60,723,717	2,557	\$61,828,515	2,681	\$67,767,328	2,907	\$72,918,507	3,061	\$80,077,301

	FY 2019		FY 2020		FY 2021		FY 2022		FY 2023	
	#	Award	#	Award	#	Award	#	Award	#	Award
McWilliams School of Biomedical Informatics	60	\$545,581	95	\$663,108	125	\$1,308,999	129	\$1,525,505	178	\$1,459,712
School of Dentistry	452	19,400,039	450	20,357,541	445	21,276,805	446	22,520,750	438	23,599,738
Graduate School of Biomedical Sciences	113	1,203,719	107	1,214,069	136	1,101,457	122	1,223,273	172	1,677,453
McGovern Medical School	716	25,777,789	705	26,965,232	705	27,686,813	691	27,146,787	687	29,048,366
Cizik School of Nursing	1,162	19,663,677	1,104	17,586,776	1,108	17,646,392	1,034	17,846,564	897	15,851,312
School of Public Health	531	7,979,697	572	8,284,980	740	11,195,522	824	12,800,478	710	12,058,788
Grand Total	3,034	\$74,570,502	3,033	\$75,071,706	3,259	\$80,215,988	3,246	\$83,063,357	3,082	\$83,695,369

Total Student Financial Aid Awards by Major Program *FY 2014 - 2023*

Sources: Heather Beckles-Bright and James Fore, Office of Student Financial Services

¹ Due to a Student Information System change, if a student accepts a lesser award amount than the original maximum award offered, the offer amount is automatically superseded by the lower accepted amount. In previous years, the original maximum award offered was reported. As a result, the Direct Loan award amounts beginning in the 2013-14 academic year are significantly lower than those reported in previous years.

	FY 2014	FY 2015	FY 2016	FY 2017	FY 2018
LDS – Dental	\$73,608	\$50,000	\$40,000	\$54,000	\$80,000
LDS – Medical	47,532	131,896	118,126	295,060	196,850
FPLP – Perkins	657,299	594,000	517,687	580,913	183,230
HPSLP – Dental	949,719	489,747	420,000	885,432	829,544
HPSLP – Medical	0	0	0	0	0
Nursing SLP – Undergraduate	0	0	0	0	0
Nursing SLP – Graduate	0	3,000	16,500	49,500	92,500
Nurse Faculty Loan Program	61,711	47,685	52,129	7,309	0
Health Education Loan Program	0	0	0	0	0
Direct Loans - Subsidized ¹	2,621,502	2,603,964	2,480,313	2,515,068	2,636,156
Direct Loans - Unsubsidized ¹	45,351,965	46,868,563	48,893,411	51,500,925	54,026,973
Institutional & other loans and scholarships	10,960,381	11,039,660	15,229,162	17,030,300	22,032,048
Grand Total	\$60,723,717	\$61,828,515	\$67,767,328	\$72,918,507	\$80,077,301

	FY 2019	FY 2020	FY 2021	FY 2022	FY 2023
LDS – Dental	\$52,000	\$91,000	\$98,485	\$75,000	\$90,000
LDS – Medical	114,423	135,000	254,063	150,000	118,542
FPLP – Perkins	0	0	0	0	0
HPSLP – Dental	429,000	559,000	670,833	753,000	834,794
HPSLP – Medical	0	0	0	0	0
Nursing SLP – Undergraduate	0	0	0	0	0
Nursing SLP – Graduate	33,000	9,000	16,500	16,500	6,000
Nurse Faculty Loan Program	8,182	12,260	20,837	10,929	0
Health Education Loan Program	0	0	0	0	0
Direct Loans - Subsidized ¹	2,445,241	2,259,726	2,310,879	2,476,029	1,949,109
Direct Loans - Unsubsidized ¹	52,881,783	51,759,890	55,289,319	55,839,586	55,059,024
Institutional & other loans and scholarships	18,606,873	20,245,830	21,555,072	23,742,313	25,637,900
Grand Total	\$74,570,502	\$75,071,706	\$80,215,988	\$83,063,357	\$83,695,369

Average Student Financial Aid Awards by School FY 2014 - 2023

Sources: Heather Beckles-Bright and James Fore, Office of Student Financial Services

Note: This is the average of those students receiving aid.

	2014	2015	2016	2017	2018
McWilliams School of Biomedical Informatics	\$7,626	\$12,201	\$9,784	\$8,889	\$13,195
School of Dentistry	39,167	40,291	43,482	43,953	45,757
Graduate School of Biomedical Sciences	12,089	11,411	10,034	9,281	11,207
McGovern Medical School	34,576	36,750	36,886	36,746	36,431
Cizik School of Nursing	15,462	15,458	16,990	17,160	19,274
School of Public Health	13,910	13,651	13,968	15,179	16,931
Combined Average	\$23,785	\$24,180	\$25,277	\$25,084	\$26,161

	2019	2020	2021	2022	2023
McWilliams School of Biomedical Informatics	\$9,093	\$6,980	\$10,742	\$11,826	\$8,201
School of Dentistry	42,920	45,239	47,813	50,495	53,881
Graduate School of Biomedical Sciences	10,652	11,346	8,099	10,027	9,753
McGovern Medical School	36,002	38,249	39,272	39,286	42,283
Cizik School of Nursing	16,922	15,930	15,926	17,260	17,671
School of Public Health	15,028	14,484	15,129	15,535	16,984
Combined Average	\$24,578	\$24,752	\$24,614	\$25,589	\$27,156

Average Student Debt on Graduation *FY 2014 - 2023*

Sources: Heather Beckles-Bright and James Fore, Office of Student Financial Services

Note: This is the average of those students receiving aid.

	FY 2014	FY 2015	FY 2016	FY 2017	FY 2018
McWilliams School of Biomedical Informatics	\$20,488	\$46,669	\$34,151	\$37,746	\$30,998
School of Dentistry (DDS)	138,689	151,335	157,066	158,561	157,620
School of Dentistry - Dental Hygiene	27,127	26,950	32,678	29,889	30,677
School of Dentistry - Dental Post Grad	67,370	62,539	59,801	52,533	64,871
Graduate School of Biomedical Sciences	43,166	48,156	37,589	38,402	38,463
McGovern Medical School (MD)	115,942	117,381	115,372	130,099	133,826
McGovern Medical School - Clinical Research					
Cizik School of Nursing - Undergraduate	18,076	20,060	22,232	20,972	21,648
Cizik School of Nursing - Graduate	47,495	43,245	38,123	48,364	40,108
School of Public Health	35,881	37,950	34,608	36,920	39,624
	FY 2019	FY 2020	FY 2021	FY 2022	FY 2023
McWilliams School of Biomedical Informatics	\$40,135	\$27,573	\$23,828	\$37,300	\$58,639
School of Dentistry (DDS)	161,743	175,483	163,685	190,526	193,535
School of Dentistry - Dental Hygiene	27,745	27,585	24,129	17,562	29,740
School of Dentistry - Dental Post Grad	82,473	58,064	70,538	111,477	118,458
Graduate School of Biomedical Sciences	32,833	37,303	42,649	58,167	112,079
McGovern Medical School (MD)	125,180	138,972	138,174	123,404	131,106
McGovern Medical School - Clinical Research					
Cizik School of Nursing - Undergraduate	19,542	19,426	18,397	23,238	23,012
Cizik School of Nursing - Graduate	47,572	43,868	41,382	64,162	74,553
School of Public Health	40,809	36,029	38,914	41,053	45,581

Total Graduates by School

Sources: Robert Jenkins and Tera Wright, Office of the Registrar

McWilliams School of Biomedical Informatics <i>2010 - present</i>	627
School of Dentistry <i>1943 – present</i>	12,574
Graduate School of Biomedical Sciences <i>1963 - present</i>	3,305
McGovern Medical School <i>1970 - present</i>	9,109
Cizik School of Nursing <i>1972 - present</i>	15,620
School of Public Health <i>1967 - present</i>	10,642
School of Allied Health Sciences <i>1973 - 1996</i>	2,019
School of Health Information Sciences <i>1998 – 2009</i>	134
Grand Total (all degrees, all years)	54,030

This page is intentionally blank

Research

Research Expenditures by Unit	43
UT Health-Related Institutions Research Expenditures by Source	44
Trends in UT Health-Related Institutions Research Expenditures	44
Research Expenditures by Sponsoring Agency	45
Intellectual Property Activity	46
Grant Proposals by Unit & Type	47
Contract & Grant Awards by Unit & Type	48
Contract & Grant Awards by Source	50
NIH Awards by Unit	52
Federal Awards by Agency	53
Principal Investigators by Unit	53
Sponsored Project Activity Report	54

Research Expenditures by Unit *FY 2014 - 2023*

Source: Scott Barnett, Accounting & Budget

Includes operating expenses, indirect cost recoveries and capital purchased.

Note (***pertains to all research tables***):

- Faculty in the Graduate School of Biomedical Sciences hold their primary appointments in another school/institution. As such, their respective research activity is reported in the home department, and not through GSBS. The exception to this is when reporting the research activity of faculty who hold administrative roles at GSBS, such as the school's dean.

	FY 2014	FY 2015	FY 2016	FY 2017	FY 2018
McWilliams School of Biomedical Informatics	\$9,562,077	\$7,494,484	\$8,269,184	\$9,349,754	\$12,279,875
School of Dentistry	3,128,088	2,901,719	3,484,282	3,989,747	4,691,121
McGovern Medical School	129,939,638	133,821,022	141,450,730	151,326,681	157,876,613
Cizik School of Nursing	931,134	1,084,594	1,604,983	1,236,005	988,471
School of Public Health	48,818,644	48,174,634	45,512,796	43,682,179	47,361,787
Behavioral Sciences Campus	77,377	99,186	15,763	76,808	11,957
Academic Support Area	30,907,267	29,141,911	25,095,777	25,263,412	19,356,769
Grand Total	\$213,802,147	\$215,223,066	\$225,433,516	\$234,924,585	\$242,566,592

	FY 2019	FY 2020	FY 2021	FY 2022	FY 2023
McWilliams School of Biomedical Informatics	\$17,838,961	\$17,981,236	\$20,923,751	\$22,429,100	\$21,120,683
School of Dentistry	4,810,691	4,239,406	4,086,971	6,019,911	7,065,081
McGovern Medical School	168,447,437	165,979,551	178,848,868	196,739,969	218,475,802
Cizik School of Nursing	1,892,077	2,472,380	3,342,132	3,839,196	4,605,365
School of Public Health	45,893,450	48,148,749	54,275,844	62,980,320	64,905,568
Behavioral Sciences Campus	630	77	448	10,131	17,398
Academic Support Area	15,913,564	17,324,662	27,570,562	27,870,455	34,198,451
Grand Total	\$254,796,810	\$256,146,061	\$289,048,576	\$319,889,083	\$350,388,349

UT Health-Related Institutions Research Expenditures by Source FY 2022

Source: Research Expenditures for Texas Institutions of Higher Education, The Texas Higher Education Coordinating Board.

Note: FY 2022 is the most recent report available on the THECB website as of press time.

Institution	Federal	State & Local Appropriations	State and Local Contracts & Grants	Institution Resources	Private For-Profit	Private Non-Profit	Total
UTHealth Houston	\$178,520,295	\$24,028,040	\$17,940,490	\$32,066,264	\$15,802,266	\$41,238,377	\$309,595,732
UT Health San Antonio	126,006,417	16,414,964	11,172,384	32,641,560	15,096,016	20,100,221	221,431,562
UT Health Tyler	14,361,943	1,660,695	6,466,306	852,130	155,546	4,353,864	27,850,484
UT MD Anderson	220,757,026	257,829,801	37,386,301	130,005,439	241,850,179	186,410,839	1,074,239,585
UTMB-Galveston	123,518,961	808,959	7,671,026	20,585,953	7,266,887	12,125,674	171,977,460
UT Southwestern	301,714,338	42,528,278	43,341,045	57,135,381	54,194,536	141,559,138	640,472,716
UT Austin Dell Medical School	14,175,987	2,808,860	3,826,030	13,006,333	5,802,995	5,932,007	45,552,212
UT Rio Grande Valley Medical School	4,803,059	3,714,246	723,433	3,105,816	8,613,440	61,782	21,021,776
Grand Total	\$983,858,026	\$349,793,843	\$128,527,015	\$289,398,876	\$348,781,865	\$411,781,902	\$2,512,141,527

Trends in UT Health-Related Institutions Research Expenditures FY 2018 - 2022

Source: Research Expenditures for Texas Institutions of Higher Education, The Texas Higher Education Coordinating Board.

Note: FY 2022 is the most recent report available on the THECB website as of press time.

Institution	FY 2018	FY 2019	FY 2020	FY 2021	FY 2022	% Change FY 2018-22
UTHealth Houston	\$240,030,744	\$252,114,494	\$253,142,796	\$285,829,018	\$309,595,732	29.0%
UT Health San Antonio	173,522,815	180,665,435	195,215,120	203,336,799	221,431,562	27.6%
UT Health Tyler	19,242,529	17,730,519	21,264,915	25,685,357	27,850,484	44.7%
UT MD Anderson	857,950,511	895,748,758	967,676,566	1,021,617,577	1,074,239,585	25.2%
UTMB-Galveston	149,290,729	147,683,964	152,611,603	161,572,993	171,977,460	15.2%
UT Southwestern	469,504,659	489,417,809	524,109,323	554,381,472	640,472,716	36.4%
UT Austin Dell Medical School	27,238,585	34,856,662	35,698,490	37,088,313	45,552,212	67.2%
UT Rio Grande Valley Medical School	10,847,246	19,356,542	22,605,280	22,813,962	21,021,776	93.8%
Grand Total	\$1,947,627,818	\$2,037,574,183	\$2,172,324,093	\$2,312,325,491	\$2,512,141,527	29.0%

Research Expenditures by Type of Sponsoring Agency *FY 2023*

Source: Scott Barnett, Accounting & Budget

	Grand Total	Federal	State	Local	Private	Other-Appropriated	Other-Designated
McWilliams School of Biomedical Informatics	\$21,120,683	\$10,119,573	\$3,217,866	\$0	\$1,122,281	\$0	\$6,660,963
School of Dentistry	7,065,081	6,266,291	8,449	0	645,599	50,029	94,713
McGovern Medical School	218,475,802	122,966,342	8,443,421	0	47,880,031	16,321,761	22,864,247
Cizik School of Nursing	4,605,365	2,625,839	111,534	0	1,054,378	585,631	227,983
School of Public Health	64,905,568	44,250,784	5,858,684	220,068	10,870,880	2,133,441	1,571,712
Behavioral Sciences Campus	17,398	0	0	0	17,398	0	0
Academic Support Area	34,198,451	11,530,529	0	0	0	11,864,405	10,803,517
Grand Total	\$350,388,349	\$197,759,358	\$17,639,953	\$220,068	\$61,590,567	\$30,955,266	\$42,223,136

Intellectual Property Activity *FY 2017 – 2023*

Source: Christine Flynn, PhD, Office of Technology Management

Notes:

¹ FY 2021 data is restated from *Fact Book 2022*. Additionally, the FY 2020 U.S. patent application total is revised from *Fact Book 2021*.

² Royalty & License Fee income Includes License Management Fees and equity sales.

	FY 2017	FY 2018	FY 2019	FY 2020	FY 2021	FY 2022	FY 2023
Invention Disclosures	60	71	58	52	50	59	51
New U.S. Patent Applications Filed ¹	41	65	63	58	57	57	29
Licenses/Options Executed	31	24	22	22	24	10	14
Licenses & Options Generating Income	89	87	73	75	88	78	80
Active License & Option Agreements	129	125	139	130	137	125	104
U.S. Patents Issued	11	7	16	8	17	18	6
Startup Companies Formed	7	1	5	2	4	1	1
Royalty & License Fee income²	\$4,551,981	\$3,702,514	\$5,045,102	\$3,385,894	\$7,840,499	\$4,192,900	\$5,829,549

Grant Proposals by Unit & Type FY 2019 – 2023

Source: Frank La, Sponsored Projects Administration

Note: Data reflect the respective annual award amounts for the period it is effective. Clinical research projects that paid based on study subject enrollment were counted as awarded at 100 percent of the contracted amount in the year received, regardless of enrollment/earned revenue. Reporting is on a cash-basis method, reflecting revenue as it is received.

	FY 2019		FY 2020		FY 2021		FY 2022		FY 2023	
	\$	#	\$	#	\$	#	\$	#	\$	#
McWilliams School of Biomedical Informatics										
Fellowship/Scholarship	\$0	0	\$0	0	\$0	0	\$141,063	3	\$38,620	1
Instruction	0	0	18,326	1	73,012	2	18,776	1	1,031,232	4
Research	173,011,762	103	266,889,675	142	340,560,737	169	223,415,440	121	277,907,563	157
Other	17,950	1	0	0	35,447	1	179,484	2	6,724,575	1
Total MSBMI	\$173,029,712	104	\$266,908,001	143	\$340,669,196	172	\$223,754,763	127	\$285,701,990	163
School of Dentistry										
Fellowship/Scholarship	\$0	0	\$179,741	2	\$95,644	3	\$771,315	3	\$20,000	1
Instruction	450,356	4	0	0	2,950,635	1	1,289,922	1	0	0
Research	49,079,219	57	45,376,388	65	49,459,435	53	64,829,610	53	54,077,862	48
Other	0	0	2,701,030	2	64,999	1	1,291,535	4	3,163,399	4
Total SOD	\$49,529,575	61	\$48,257,159	69	\$52,570,713	58	\$68,182,382	61	\$57,261,261	53
Graduate School of Biomedical Sciences										
Fellowship/Scholarship	\$0	0	\$135,360	1	\$63,040	1	\$0	0	\$0	0
Instruction	0	0	0	0	0	0	0	0	\$1,716,650	1
Research	7,000	2	0	0	0	0	0	0	0	0
Total GSBS	\$7,000	2	\$135,360	1	\$63,040	1	\$0	0	\$1,716,650	1
McGovern Medical School										
Fellowship/Scholarship	\$0	0	\$4,483,168	42	\$6,950,098	56	\$7,999,358	59	\$5,908,141	50
Instruction	10,045,042	70	472,632	10	5,639,656	7	5,616,849	12	6,092,144	13
Research	1,029,384,141	931	915,254,440	867	1,035,251,741	894	991,621,505	864	1,225,927,522	1,029
Other	1,287,063	10	20,425,207	18	13,798,794	25	47,096,064	42	74,182,859	32
Total MMS	\$1,040,716,246	1,011	\$940,635,447	937	\$1,061,640,289	982	\$1,052,333,776	977	\$1,312,110,666	1,124
Cizik School of Nursing										
Fellowship/Scholarship	\$0	0	\$418,663	4	\$578,301	2	\$449,129	1	\$120,000	2
Instruction	1,718,274	5	1,499,738	2	759,936	2	885,023	3	542,835	2
Research	12,399,811	24	8,613,107	23	30,243,252	34	48,913,648	40	47,174,491	28
Other	8,807,219	3	1,413,979	6	220,869	4	359,138	3	6,197,198	5
Total CSON	\$22,925,304	32	\$11,945,487	35	\$31,801,358	42	\$50,606,938	47	\$54,034,524	37
School of Public Health										
Fellowship/Scholarship	\$0	0	\$410,889	2	\$197,196	3	\$477,887	4	\$70,000	1
Instruction	4,570,327	8	14,758,071	6	5,080,773	8	72,982	2	8,095,004	8
Research	309,336,223	276	309,034,392	310	308,385,381	300	328,948,345	306	403,451,768	338
Other	10,493,985	6	530,759	4	7,269,443	16	28,710,502	24	35,429,842	24
Total SPH	\$324,400,535	290	\$324,734,111	322	\$320,932,793	327	\$358,209,716	336	\$447,046,614	371
University Administration										
Fellowship/Scholarship	\$0	0	\$0	0	\$0	0	\$0	0	\$8,387,227	4
Instruction	0	0	204,075	1	0	0	0	0	84,227,147	4
Research	0	0	11,171,690	5	0	0	0	0	0	0
Other	0	0	1,995,703	2	0	0	0	0	0	0
Total UA	\$0	0	\$13,371,468	8	\$0	0	\$0	0	\$92,614,374	8
Behavioral Sciences Campus										
Fellowship/Scholarship	\$0	0	\$151,624	1	\$0	0	\$0	0	\$0	0
Research	0	0	0	0	0	0	0	0	0	0
Other	0	0	0	0	0	0	0	0	0	0
Total BSC	\$0	0	\$151,624	1	\$0	0	\$0	0	\$0	0
TEPHI										
Fellowship/Scholarship	-	-	-	-	-	-	\$0	0	\$0	0
Instruction	-	-	-	-	-	-	0	0	0	0
Research	-	-	-	-	-	-	0	0	423,762	1
Other	-	-	-	-	-	-	34,718,494	1	41,087,679	1
Total TEPHI	-	-	-	-	-	-	\$34,718,494	1	\$41,511,441	2
UTHealth Houston Total										
Fellowship/Scholarship	\$0	0	\$5,779,445	52	\$7,884,279	65	\$9,838,752	70	\$14,543,988	59
Instruction	16,783,999	87	16,952,842	20	14,503,012	20	7,883,552	19	101,705,012	32
Research	1,573,218,156	1,393	1,556,339,692	1,412	1,763,900,546	1,450	1,657,728,548	1,384	2,008,962,968	1,601
Other	20,606,217	20	27,066,678	32	21,389,552	47	112,355,217	76	166,785,552	67
Grand Total	\$1,610,608,372	1,500	\$1,606,138,657	1,516	\$1,807,677,389	1,582	\$1,787,806,069	1,549	\$2,291,997,520	1,759

Contract & Grant Awards by Unit & Type FY 2019 - 2023

Source: Frank La, Sponsored Projects Administration

Note: In FY 2022, Sponsored Projects Administration recategorized UTHealth's extramural funding portfolio to better reflect the broader range of the university's program types: 1) "Research" has been sub-categorized into "Basic/Lab Research or Services" (and includes federal shared equipment grants) and "Clinical Research", 2) Instruction and Fellowship/Scholarship have been combined into "Training/Fellowship/Scholarship" to highlight the number of programs geared toward developing future research scientists and, 3) the Non-Research/Public Service category has been separated from "Other" to reflect the growth of public health and clinical service programs. Examples of these are the county-wide covid testing contract and the federal Ryan White HIV/AIDS program. Last, the funding amounts are all inclusive of Sponsored Projects but the number of awards, prior to 2022, did not include clinical trials. FY 2022 number of awards includes 395 clinical trials.

	FY 2019	#	FY 2020	#	FY 2021	#	FY 2022	#	FY 2023	#
McWilliams School of Biomedical Informatics										
Basic/Lab Research or Services	\$11,785,571	55	\$13,443,675	51	\$15,336,975	56	\$13,377,602	54	\$12,447,573	70
Clinical Research	0	0	0	0	0	0	3,380,194	19	6,361,902	22
Non-Research/Public Service	0	0	0	0	0	0	936,635	2	4,891,244	4
Training/Fellowship/Scholarship	35,332	1	0	0	73,012	2	179,176	5	153,250	5
Other	354,806	2	1,297,943	4	952,011	3	0	0	0	0
Total MSBMI	\$12,175,709	58	\$14,741,618	55	\$16,361,998	61	\$17,873,607	80	\$23,853,969	101
School of Dentistry										
Basic/Lab Research or Services	\$4,984,794	35	\$3,928,083	35	\$4,436,968	49	\$5,835,804	45	\$5,280,474	35
Clinical Research	0	0	0	0	0	0	1,555,280	23	2,353,058	23
Non-Research/Public Service	0	0	0	0	0	0	462,497	2	524,694	4
Training/Fellowship/Scholarship	520,419	5	332,732	5	156,040	6	307,908	3	511,066	6
Other	0	0	0	0	65,000	1	0	0	0	0
Total SOD	\$5,505,213	40	\$4,260,815	40	\$4,658,008	56	\$8,161,489	73	\$8,669,292	68
Graduate School Biomedical Sciences										
Basic/Lab Research or Services	\$3,000	1	\$0	0	\$0	0	\$0	0	\$0	0
Clinical Research	0	0	0	0	0	0	0	0	\$0	0
Non-Research/Public Service	0	0	0	0	0	0	0	0	\$0	0
Training/Fellowship/Scholarship	32,521	1	0	0	0	0	0	0	\$0	0
Other	0	0	0	0	0	0	0	0	\$0	0
Total GSBS	\$35,521	2	\$0	0	\$0	0	\$0	0	\$0	0
McGovern Medical School										
Basic/Lab Research or Services	\$156,705,987	804	\$140,229,606	740	\$157,670,556	931	\$88,067,375	525	\$95,286,861	495
Clinical Research	0	0	0	0	0	0	76,127,568	864	64,875,376	845
Non-Research/Public Service	0	0	0	0	0	0	36,915,213	52	88,554,325	122
Training/Fellowship/Scholarship	3,054,220	61	3,363,487	55	4,486,715	47	5,592,495	72	5,296,824	65
Other	1,564,790	11	27,768,474	49	43,924,809	66	37,935	4	84,587	9
Total MMS	\$161,324,997	876	\$171,361,567	844	\$206,082,080	1,044	\$206,740,586	1,517	\$254,097,973	1,536
Cizik School of Nursing										
Basic/Lab Research or Services	\$2,143,558	21	\$1,769,879	15	\$2,276,945	18	\$0	1	\$0	0
Clinical Research	0	0	0	0	0	0	3,338,979	24	3,277,375	28
Non-Research/Public Service	0	0	0	0	0	0	178,325	3	1,698,389	7
Training/Fellowship/Scholarship	570,021	5	583,642	4	551,402	3	168,498	4	329,900	6
Other	0	0	250,197	4	242,577	9	35,684	1	33,412	1
Total CSON	\$2,713,579	26	\$2,603,718	23	\$3,070,924	30	\$3,721,486	33	\$5,339,076	42
School of Public Health										
Basic/Lab Research or Services	\$48,732,884	239	\$53,665,393	235	\$51,633,133	271	\$19,995,350	126	\$26,289,938	152
Clinical Research	0	0	0	0	0	0	47,321,646	186	33,433,163	184
Non-Research/Public Service	0	0	0	0	0	0	38,633,742	56	19,901,326	54
Training/Fellowship/Scholarship	2,335,701	6	1,192,969	5	4,363,622	14	3,128,514	12	3,159,985	13
Other	1,174,479	8	27,537,525	18	19,198,196	45	356,721	4	1,208,130	16
Total SPH	\$52,243,064	253	\$82,395,887	258	\$75,194,951	330	\$109,435,973	384	\$83,992,542	419

continued **Contract & Grant Awards by Unit & Type FY 2019 - 2023**

	FY 2019	#	FY 2020	#	FY 2021	#	FY 2022	#	FY 2023	#
University Administration										
Basic/Lab Research or Services	\$7,481,422	3	\$15,280,130	5	\$0	0	\$19,576	1	\$194,055	1
Clinical Research	0	0	0	0	0	0	0	0	3,126,433	15
Non-Research/Public Service	0	0	0	0	0	0	15,700	1	0	0
Training/Fellowship/Scholarship	0	0	1,876,086	2	110,080	1	247,433	2	2,962,492	4
Other	0	0	1,995,703	2	7,914,206	6	0	0	0	0
Total UA	\$7,481,422	3	\$19,151,919	9	\$8,024,286	7	\$282,709	4	\$6,282,980	20
Behavioral Sciences Campus										
Research (includes Clinical Studies)	\$0	0	\$0	0	\$0	0	\$0	0	\$0	0
Total BSC	\$0	0	\$0	0	\$0	0	\$0	0	\$0	0
TEPHI										
Basic/Lab Research or Services	-	-	-	-	-	-	\$0	0	\$0	0
Clinical Research	-	-	-	-	-	-	0	0	0	0
Non-Research/Public Service	-	-	-	-	-	-	20,000,000	1	20,000,000	1
Training/Fellowship/Scholarship	-	-	-	-	-	-	0	0	0	0
Other	-	-	-	-	-	-	0	0	0	0
Total TEPHI	-	-	-	-	-	-	\$20,000,000	1	\$20,000,000	1
UTHealth Houston Total										
Basic/Lab Research or Services	\$231,837,216	1,158	\$228,316,766	1,081	\$231,354,577	1,325	\$127,295,707	752	\$139,498,901	753
Clinical Research	0	0	0	0	0	0	131,723,667	1,116	\$113,427,307	1,117
Non-Research/Public Service	0	0	0	0	0	0	97,142,112	117	\$135,569,978	192
Training/Fellowship/Scholarship	6,548,214	79	7,348,916	71	9,740,871	73	9,624,024	98	\$12,413,517	99
Other	3,094,075	21	58,849,842	77	72,296,799	130	430,340	9	\$1,326,129	26
Grand Total	\$241,479,505	1,258	\$294,515,524	1,229	\$313,392,247	1,528	\$366,215,850	2,092	\$402,235,832	2,187

Contract & Grant Awards by Source FY 2019 - 2023

Source: Frank La, Sponsored Projects Administration

	FY 2019		FY 2020		FY 2021		FY 2022		FY 2023	
	\$	#	\$	#	\$	#	\$	#	\$	#
McWilliams School of Biomedical Informatics										
Federal	\$8,888,573	49	\$11,444,366	44	\$13,115,460	49	\$13,864,544	62	\$20,454,971	80
State	2,772,154	4	2,531,926	4	2,433,362	4	2,668,002	8	2,365,538	7
Local	0	0	0	0	0	0	0	0	18,000	1
FND/NFP	344,855	3	644,826	5	583,400	4	853,874	6	810,576	5
Industry	109,371	1	120,500	2	229,776	2	487,187	4	204,884	8
Other	60,756	1	0	0	0	0	0	0	0	0
Private	0	0	0	0	0	0	0	0	0	0
Total MSBMI	\$12,175,709	58	\$14,741,618	55	\$16,361,998	59	\$17,873,607	80	\$23,853,969	101
School of Dentistry										
Federal	\$4,591,983	35	\$3,565,576	28	\$3,605,377	28	\$7,246,729	43	\$7,932,888	49
State	0	0	65,238	1	133,484	3	189,600	2	228,366	3
Local	0	0	0	0	0	0	0	0	0	0
FND/NFP	467,235	7	566,297	9	645,045	17	620,996	19	404,959	8
Industry	67,443	5	63,704	4	274,102	11	79,164	8	77,864	7
Other	18,552	1	0	0	0	0	25,000	1	25,215	1
Private	0	0	0	0	0	0	0	0	0	0
Total SOD	\$5,505,213	48	\$4,260,815	42	\$4,658,008	59	\$8,161,489	73	\$8,669,292	68
Graduate School Biomedical Sciences										
Federal	\$32,521	1	\$0	0	\$0	0	\$0	0	\$0	0
State	0	0	0	0	0	0	0	0	0	0
FND/NFP	3,000	1	0	0	0	0	0	0	0	0
Private	0	0	0	0	0	0	0	0	0	0
Total GSBS	\$35,521	2	\$0	0	\$0	0	\$0	0	\$0	0
McGovern Medical School										
Federal	\$130,754,859	507	\$119,730,776	520	\$152,520,718	663	\$156,479,091	742	\$185,420,832	754
State	6,876,240	23	20,217,971	49	28,072,630	57	19,332,496	62	33,501,330	58
Local	105,000	4	104,930	4	42,918	2	189,597	3	271,366	3
FND/NFP	8,395,564	112	12,412,615	136	7,548,444	125	8,850,889	146	11,552,911	169
Industry	14,998,764	223	18,457,562	457	17,143,455	509	20,780,489	535	22,515,682	529
Other	194,570	7	437,713	14	753,915	23	1,108,024	29	835,852	23
Private	0	0	0	0	0	0	0	0	0	0
Total MMS	\$161,324,997	876	\$171,361,567	1,180	\$206,082,080	1,379	\$206,740,586	1,517	\$254,097,973	1,536
Cizik School of Nursing										
Federal	\$2,003,238	18	\$1,871,102	15	\$2,069,342	18	\$3,028,014	19	\$4,199,815	25
State	492,800	1	493,830	1	680,131	3	177,535	4	515,111	3
Local	0	0	0	0	0	0	10,000	2	0	1
FND/NFP	170,998	4	78,128	6	234,572	8	505,937	8	524,150	12
Industry	24,362	0	160,658	2	86,879	1	0	0	100,000	1
Other	22,181	3	0	0	0	0	0	0	0	0
Private	0	0	0	0	0	0	0	0	0	0
Total CSN	\$2,713,579	26	\$2,603,718	24	\$3,070,924	30	\$3,721,486	33	\$5,339,076	42
School of Public Health										
Federal	\$4,610,531	178	\$44,676,997	174	\$67,356,585	227	\$95,928,208	279	\$66,269,537	274
State	8,265,558	22	30,239,409	23	1,631,633	30	8,821,894	37	10,874,320	52
Local	427,580	5	377,408	4	302,363	8	445,395	7	243,856	6
FND/NFP	8,215,582	38	6,676,512	50	5,199,958	49	2,795,684	40	5,588,586	74
Industry	346,476	6	207,626	6	444,236	9	183,692	5	94,400	5
Other	377,338	4	217,935	2	257,301	5	1,261,100	16	921,843	8
Private	0	0	0	0	0	0	0	0	0	0
Total SPH	\$52,243,065	253	\$82,395,887	259	\$75,192,076	328	\$109,435,973	384	\$83,992,542	419

continued **Contract & Grant Awards by Source** FY 2019 – 2023

	FY 2019		FY 2020		FY 2021		FY 2022		FY 2023	
	\$	#	\$	#	\$	#	\$	#	\$	#
University Administration										
Federal	\$7,481,422	3	\$19,151,919	9	\$7,914,206	6	\$35,276	2	\$6,043,548	19
FND/NFP	0	0	0	0	110,080	1	247,433	2	239,432	1
Industry	0	0	0	0	0	0	0	0	0	0
Private	0	0	0	0	0	0	0	0	0	0
Total UA	\$7,481,422	3	\$19,151,919	9	\$8,024,286	7	\$282,709	4	\$6,282,980	20
Behavioral Sciences Center										
Federal	\$0	0	\$0	0	\$0	0	\$0	0	\$0	0
Private	0	0	0	0	0	0	0	0	0	0
Total BSC	\$0	0	\$0	0	\$0	0	\$0	0	\$0	0
TEPHI										
Federal	-	-	-	-	-	-	\$20,000,000	1	\$20,000,000	1
State	-	-	-	-	-	-	0	0	0	0
Local	-	-	-	-	-	-	0	0	0	0
FND/NFP	-	-	-	-	-	-	0	0	0	0
Industry	-	-	-	-	-	-	0	0	0	0
Other	-	-	-	-	-	-	0	0	0	0
Private	-	-	-	-	-	-	0	0	0	0
Total TEPHI	-	-	-	-	-	-	\$20,000,000	1	\$20,000,000	1
UTHealth Houston Total										
Federal	\$188,723,127	791	\$200,440,736	790	\$246,581,688	991	\$296,581,862	1,148	\$310,321,591	1,202
State	18,406,752	50	53,548,374	78	32,951,240	97	31,189,527	113	47,484,665	123
Local	532,580	9	482,338	8	345,281	10	644,992	12	533,222	11
FND/NFP	17,597,234	165	20,378,378	206	14,211,419	203	13,874,813	221	19,120,614	269
Industry	15,546,416	235	19,010,050	471	18,288,528	533	21,530,532	552	22,992,830	550
Other	673,397	16	655,648	16	1,011,216	28	2,394,124	46	1,782,910	32
Private	0	0	0	0	0	0	0	0	0	0
Grand Total	\$241,479,506	1,266	\$294,515,524	1,569	\$313,389,372	1,862	\$366,215,850	2,092	\$402,235,832	2,187

NIH Awards by Unit FY 2014 - 2023

Source: Frank La, Sponsored Projects Administration

	FY 2014 Amount	#	FY 2015 Amount	#	FY 2016 Amount	#	FY 2017 Amount	#	FY 2018 Amount	#
McWilliams School of Biomedical Informatics	\$1,034,136	6	\$2,166,600	8	\$2,528,418	10	\$4,097,971	12	\$5,872,750	20
School of Dentistry	1,753,736	6	2,674,524	8	2,715,755	10	3,473,908	10	2,798,652	10
Graduate School of Biomedical Sciences	0	0	0	0	0	0	0	0	0	0
McGovern Medical School	61,997,310	198	50,983,796	145	65,929,242	196	60,719,239	230	66,918,386	235
Cizik School of Nursing	406,559	1	877,723	3	468,212	2	358,672	1	0	0
School of Public Health	20,160,666	41	20,663,212	39	18,626,712	32	17,381,015	26	17,758,537	36
University Administration	0	0	0	0	0	0	0	0	0	0
Grand Total	\$85,352,407	252	\$77,365,855	203	\$90,268,339	250	\$86,030,805	279	\$93,348,325	301

	FY 2019 Amount	#	FY 2020 Amount	#	FY 2021 Amount	#	FY 2022 Amount	#	FY 2023 Amount	#
McWilliams School of Biomedical Informatics	\$4,718,412	18	\$7,577,507	20	\$8,001,760	24	\$6,770,283.00	24	\$9,687,440.00	22
School of Dentistry	2,444,741	10	1,625,833	8	2,504,238	10	4,247,847	16	6,292,135	18
Graduate School of Biomedical Sciences	32,521	1	0	0	0	0	0	0	0	0
McGovern Medical School	74,982,817	226	68,780,097	208	95,672,595	302	96,886,767	344	95,918,675	311
Cizik School of Nursing	1,386,295	4	1,307,260	5	1,729,729	6	2,751,704	8	3,035,360	10
School of Public Health	18,578,288	48	20,737,411	57	21,724,160	59	23,065,976	78	24,257,560	68
University Administration	7,481,422	3	16,180,088	3	0	0	0	0	5,680,365	17
Grand Total	\$109,624,496	310	\$116,208,195	301	\$129,632,482	401	\$133,722,577	470	\$144,871,535	446

Federal Awards by Agency FY 2019 - 2023

Source: Frank La, Sponsored Projects Administration

Note: Data reflects the respective annual award amounts for the period it is effective. Clinical research projects that paid based on study subject enrollment were counted as awarded at 100 percent of the contracted amount in the year received, regardless of enrollment/earned revenue. Reporting is on a cash-basis method, reflecting revenue as it is received.

	FY 2019		FY 2020		FY 2021		FY 2022		FY 2023	
	\$	#	\$	#	\$	#	\$	#	\$	#
Public Health Service (includes NIH)	\$115,881,885	318	\$119,562,172	314	\$134,304,301	413	\$147,825,243	482	\$150,044,847	462
NASA	0	0	0	0	124,836	1	119,685	1	184,267	2
National Science Foundation	119,522	2	963,340	5	1,484,180	8	916,998	9	1,704,824	14
Other Federal- Direct	11,013,388	26	9,843,702	24	16,620,063	30	5,145,590	28	7,607,625	33
Federal Subcontracts	61,708,332	423	70,071,522	408	94,048,309	505	138,264,024	628	150,780,028	691
Grand Total	\$188,723,127	769	\$200,440,736	751	\$246,581,689	957	\$292,271,540	1,148	\$310,321,591	1,202

Principal Investigators by Unit FY 2014 - 2023

Source: Frank La, Sponsored Projects Administration

Note: Data represent the total number of PIs who held an active grant during the noted fiscal year.

	FY 2014	FY 2015	FY 2016	FY 2017	FY 2018	FY 2019	FY 2020	FY 2021	FY 2022	FY 2023
McWilliams School of Biomedical Informatics	13	12	12	15	17	20	17	19	20	25
School of Dentistry	20	18	17	16	19	25	25	30	32	32
Graduate School of Biomedical Sciences	0	1	3	0	0	2	0	0	0	0
McGovern Medical School	275	297	331	366	388	406	421	450	490	503
Cizik School of Nursing	16	17	18	10	16	15	15	14	19	24
School of Public Health	84	95	97	93	95	96	105	113	116	121
Behavioral Sciences Center	0	0	0	0	0	0	0	0	0	0
TEPHI	-	-	-	-	-	-	-	-	1	1
University Administration	2	2	2	1	0	1	4	2	3	2
Grand Total	410	442	480	501	535	565	587	628	681	708

Sponsored Project Activity Report *FY 2023*

Source: Scott Barnett, Accounting & Budget

Note: Data represent amounts expended, not awarded.

	Total	Grants & Contracts		Gifts	Endowment
		Direct Costs	Indirect Costs	Direct Costs	Direct Costs
McWilliams School of Biomedical Informatics	\$18,391,904	\$13,727,483	\$4,064,529	\$173,423	\$426,470
School of Dentistry	10,606,271	6,751,285	1,782,015	893,910	1,179,061
McGovern Medical School	317,244,984	238,801,314	49,778,017	10,927,996	17,737,657
Cizik School of Nursing	7,114,197	4,162,194	726,230	801,095	1,424,677
School of Public Health	90,434,647	69,999,896	16,242,667	1,713,123	2,478,962
Texas Epidemic Public Health Institute	6,011,479	4,881,076	1,130,403	0	0
Behavioral Sciences Center	166,758	9,809	0	7,589	149,360
University Administration	16,638,802	13,094,126	2,235,252	474,131	835,293
Grand Total	\$466,609,043	\$351,427,183	\$75,959,113	\$14,991,266	\$24,231,480

Patient Care

McGovern Medical School Outpatient Clinical Activity - Visits	57
Un-sponsored Medical & Dental Charity Care Provided by Faculty	57
School of Dentistry Clinical Activity: Patient Visits	58
School of Dentistry Clinical Activity: Patient Treatments	59
UT Health Services Patient Visits	60
Behavioral Sciences Campus Clinical Activity	60
Medical Practice Plan Summary of Operations	61

McGovern Medical School Outpatient Clinical Activity - Visits *FY 2014 - 2023*

Source: Performance Measures Report to the Legislative Budget Board, November 2023

Note: The COVID-19 pandemic beginning in March 2020 had a profound effect on the ability of UTHealth Houston medical, dental and nursing practitioners to perform patient care. FY 2020 decreases are the direct result of clinic closures and subsequent reductions in patient visits due to social distancing requirements. These effects are notable on the patient care tables that follow in this chapter.

	Total Outpatient Visits
FY 2014	1,487,696
FY 2015	1,647,382
FY 2016	1,757,911
FY 2017	1,801,859
FY 2018	1,837,896
FY 2019	1,874,654
FY 2020	1,698,436
FY 2021	1,791,849
FY 2022	1,811,559
FY 2023	1,838,732

Un-sponsored Medical & Dental Charity Care Provided by Faculty *FY 2019-2023*

Sources: Performance Measures Report to the Legislative Budget Board, November 2023, and Shalizeh Patel, DDS, MEd, School of Dentistry

Definition of Un-sponsored Charity Care: Total dollar amount of indigent patient charges provided in hospitals and clinics contracted with or owned, operated, and funded by the health-related institutions during the reporting period.

Note: McGovern Medical School's total for FY 2023 reflects a more accurate calculation and depiction of faculty-provided uncompensated care. This approach will continue in future years.

	McGovern Medical School	School of Dentistry	Total Cost of Un-sponsored Charity Care
FY 2019	46,245,423	1,618,120	\$47,863,543
FY 2020	9,201,116	1,512,339	\$10,713,415
FY 2021	28,724,929	894,691	\$29,619,620
FY 2022	14,788,429	1,648,011	\$16,436,440
FY 2023	78,957,739	1,663,089	\$80,620,828

School of Dentistry Clinical Activity: Patient Visits FY 2016 - 2023

Source: Shalizeh Patel, DDS, MEd, School of Dentistry

	FY 2016	FY 2017	FY 2018	FY 2019	FY 2020	FY 2021	FY 2022	FY 2023
School of Dentistry Clinics								
Main Campus (Student & Resident Clinics)	61,436	71,000	65,919	69,183	51,655	61,157	66,504	69,417
UT Dentists - Group Practice	6,083	7,481	7,857	9,738	6,566	7,640	8,816	13,872
UTHealth Houston Pediatric Dentistry	7,057	6,504	7,630	6,580	4,527	5,982	6,566	6,857
UT OMS Scurlock Tower	2,956	1,870	3,444	1,884	1,424	2,087	1,598	1,947
University Dental Center (AEGD/GPR Resident Clinic)	8,155	7,714	5,568	6,249	4,541	5,618	5,593	5,279
subtotal Clinics	85,687	94,569	90,418	93,634	68,713	82,484	89,077	97,372
Outreach Clinics								
Access Health	297	161	345	0	0	0	0	0
Bering Omega Dental Clinic	383	263	261	240	129	0	0	0
Brazos Valley	0	0	0	0	0	0	0	0
City of Houston La Casa	1,375	1,069	347	513	658	0	289	313
City of Houston Sharpstown	779	636	316	488	893	0	430	413
City of Houston Sunnyside	0	0	0	0	0	0	7	63
Harris County Health Department - DH Student	151	163	181	31	123	0	0	175
Harris Health System Dental Services - UT Dentists	0	0	0	0	0	19,517	23,330	24,710
Harris Health System - Dental Center: Student (DDS)/Resident Activities	0	0	0	0	0	55	696	1,375
Harris Health System HealthCare for the Homeless Program- UT Dentists	0	0	0	0	0	0	0	2,738
Harris Health System - Monroe Clinic: Student (DDS)/Resident Activities	0	0	0	0	0	1,450	3,235	1,963
Geriatric Education Sites	68	77	98	83	44	0	0	0
HOPE Clinic	0	0	0	0	0	0	0	2,339
Healthcare for the Homeless - Houston	112	534	489	406	380	326	163	196
Mobile Dental Van	1,368	1,355	1,539	1,990	1,271	767	829	1,102
Legacy Community Health	0	0	0	0	0	0	0	39
San Jose Clinic	615	346	567	485	157	206	390	474
Spring Branch Community Health Center	0	0	0	0	138	209	0	0
TCH The Centers for Children & Women	6,497	5,724	7,348	6,811	3,412	2,484	13	362
Harris County Resources for Children & Adults	0	0	0	0	0	0	316	256
TOMAGWA HealthCare Ministries	422	444	541	667	477	498	435	569
Veterans Administration Medical Center	404	367	0	0	0	0	0	0
subtotal Outreach	12,471	11,139	12,032	11,714	7,682	25,512	30,133	36,727
Hospitals								
Harris Health System - Ben Taub	6,020	4,658	5,057	5,037	3,207	3,563	5,625	5,766
Harris Health System - Lyndon B. Johnson	4,140	5,850	6,293	5,591	4,335	3,667	5,341	4,356
Memorial Hermann - TMC	962	206	139	838	167	234	688	408
Houston Methodist	76	89	65	83	33	30	234	98
Veterans Administration Medical Center	3,421	4,452	3,464	3,791	2,641	2,430	2,130	3,014
subtotal Hospitals	14,619	15,255	15,018	15,340	10,383	9,924	14,018	13,642
Grand Total Visits	112,777	120,963	117,468	120,688	86,778	117,920	133,228	147,741

School of Dentistry Clinical Activity: Patient Treatments FY 2016 - 2023

Source: Shalizeh Patel, DDS, MEd, School of Dentistry

	FY 2016	FY 2017	FY 2018	FY 2019	FY 2020	FY 2021	FY 2022	FY2023
School of Dentistry Clinics								
Main Campus (Student & Resident Clinics)	189,128	217,299	191,451	208,858	160,484	208,009	222,023	247,022
UT Dentists - Group Practice	21,280	25,136	23,387	26,144	10,281	28,924	35,100	46,592
UTHealth Houston Pediatric Dentistry	49,369	42,748	49,599	45,898	35,309	50,040	52,326	49,508
UT OMS Scurlock Tower	3,473	1,870	4,184	4,642	4,087	5,890	5,133	5,780
University Dental Center (AEGD/GPR Resident Clinic)	15,418	25,892	22,341	23,258	18,328	25,221	23,865	24,000
subtotal Clinics	278,668	312,945	290,962	308,800	228,489	318,084	338,447	372,902
Outreach Clinics								
Access Health	402	205	457	0	0	0	0	0
Bering Omega Dental Clinic	266	185	135	245	143	0	0	0
Brazos Valley	0	0	0	0	0	0	0	0
City of Houston La Casa	5,313	3,984	2,480	1,920	5,234	0	1,257	1,579
City of Houston Sharpstown	1,865	1,642	2,403	1,364	4,358	0	2,110	1,860
City of Houston Sunnyside	0	0	0	0	0	0	48	313
Harris County Health Department - DH Student	328	359	520	311	360	0	0	707
Harris Health System Dental Services - UT Dentists	0	0	0	0	0	65,625	95,665	94,571
Harris Health System - Dental Center: Student (DDS)/Resident Activities	0	0	0	0	0	338	2,964	1,741
Harris Health System HealthCare for the Homeless Program- UT Dentists	0	0	0	0	0	0	0	2,378
Harris Health System - Monroe Clinic: Student (DDS)/Resident Activities	0	0	0	0	0	1,091	1,240	687
Geriatric Education Sites	68	77	98	83	44	0	0	0
HOPE Clinic	0	0	0	0	0	0	0	2,339
Healthcare for the Homeless - Houston	238	1,003	1,192	527	608	617	385	429
Mobile Dental Van	3,390	3,599	7,134	9,746	4,216	2,494	2,569	3,530
Legacy Community Health	0	0	0	0	0	0	0	46
San Jose Clinic	818	443	767	498	163	347	722	878
Spring Branch Community Health Center	0	0	0	0	152	349	0	0
TCH The Centers for Children & Women	21,878	25,131	31,663	31,488	14,102	11,253	57	2,836
Harris County Resources for Children & Adults	0	0	0	0	0	0	1,264	380
TOMAGWA HealthCare Ministries	641	745	1,192	1,457	940	1,349	1,406	1,365
Veterans Administration Medical Center	1,045	829	0	0	0	0	0	0
subtotal Outreach	36,252	38,202	48,041	47,639	30,320	83,463	109,687	115,639
Hospitals								
Harris Health System - Ben Taub	7,633	2,215	1,322	3,132	4,484	5,970	5,625	5,791
Harris Health System - Lyndon B. Johnson	4,634	5,850	1,108	3,511	3,485	4,910	6,196	4,585
Memorial Hermann - TMC	3,334	841	139	838	167	234	688	1,849
Houston Methodist	76	89	65	83	33	30	234	256
Veterans Administration Medical Center	9,717	8,834	10,699	9,267	5,107	5,709	4,248	4,108
subtotal Hospitals	25,394	17,829	13,333	16,831	13,276	16,853	16,991	16,589
Grand Total Treatments	340,314	368,976	352,336	373,270	272,085	418,400	465,125	505,130

UT Health Services Patient Visits FY 2014 - 2023

Source: Joy Harrison, DNP, MSN, RN, Cizik School of Nursing

Note

¹ Provider visits for FY 2023 include private patient visits

	FY 2014	FY 2015	FY 2016	FY 2017	FY 2018	FY 2019	FY 2020	FY 2021	FY 2022	FY 2023
Employee Health Activity Totals	4,981	7,241	7,372	5,486	5,360	7,983	11,171	7,781	5,676	9,766
Pre-employment Clearances										3,994
Occupational Health Program Enrollment										203
Immunizations Administered										1,902
Tuberculosis Testing										1,991
Flu Vaccine Administration										1,676
Private Patient Visits	5,548	5,347	9,571	7,092	6,156	7,654	6,613	3,566	2,070	n/a ¹
Provider Visits										3,336
Nurse Visits										1,058
Total Visits	10,529	12,588	16,943	12,578	11,516	15,637	17,784	11,347	7,746	14,160

Behavioral Sciences Campus Clinical Activity FY 2014-2023

Source: Lois Pierson, CPA, Dunn Behavioral Sciences Center

Note: Effective FY 2022, totals include both the UT Harris County Psychiatric Center and the Dunn Behavioral Sciences Center, collectively known as the Behavioral Sciences Campus.

	FY 2014	FY 2015	FY 2016	FY 2017	FY 2018
Average Daily Census	221.64	224.70	218.27	211.3	210.9
Number of Admissions	8,431	8,808	9,583	8,601	8,583
Patient Days	80,899	81,655	79,887	77,110	76,973
Average Length of Stay	9.6	9.3	8.3	9	9
	FY 2019	FY 2020	FY 2021	FY 2022	FY 2023
Average Daily Census	220.6	206.5	202.3	221.1	339.6
Number of Admissions	8,552	8,396	7,713	6,406	8,011
Patient Days	80,503	75,385	73,843	80,690	123,960
Average Length of Stay	9	9	10	13	15

Medical Practice Plan Summary of Operations *for the year ending August 31, 2023*

Source: Scott Barnett, Accounting & Budget

Note: Includes the operations of the nonprofit healthcare corporation.

Operating Revenues:

Gross Patient Charges		
Gross Patient Charges Related to Uncompensated Care	\$1,759,725,355.51	
Other Gross Patient Charges	<u>905,945,340.59</u>	
Total Gross Patient Charges		\$2,665,670,696.10
Less: Discounts and Allowances		
Contractual Allowances - Medicaid	(362,828,354.37)	
Contractual Allowances - Medicare	(589,546,081.66)	
Contractual Allowances - Managed Care and		
Other Insurance	(682,699,200.94)	
Other Unreimbursed Medical Charges	(343,106,848.01)	
Bad Debt Expense	<u>(162,004,601.92)</u>	
Total Discounts and Allowances		<u>(2,140,185,086.90)</u>
Net Patient Revenues		525,485,609.20
Contractual Revenues		688,909,173.03
Other Operating Revenues		<u>81,835,840.59</u>
Total Operating Revenues		1,296,230,622.82

Operating Expenses:

Faculty Salaries		535,138,114.97
Staff Salaries		349,467,566.53
Resident Salaries		13,770,116.69
Fringe Benefits		206,443,265.56
Maintenance and Operations		100,214,590.77
Professional Liability Insurance		780,362.62
Travel		4,748,555.70
Official Functions		1,405,291.78
Other Expenses		<u>18,629,416.74</u>
Total Operating Expenses		1,230,597,281.36

Operating Income (Loss)

65,633,341.46

Nonoperating Revenues (Expenses):

Federal Nonexchange Sponsored Programs		
Investment Income		7,769,073.98
Net Increase (Decrease) in Fair Value of Investments		265,960.85
Interest Expense on Capital Asset Financings		(1,961,941.54)
Other Nonoperating Revenues (Expenses)		<u>196,880.97</u>
Net Nonoperating Revenues (Expenses)		6,269,974.26

Income (Loss) Before Other Revenues, Expenses, Gains or Losses

71,903,315.72

Transfers In:

 Interfund/Interagency (34,391,953.63)

Transfers Out:

 Debt Service (4,640,884.02)

 Capital Outlay (5,035,761.00)

 Interfund/Interagency (808,009.00)

 Balance Sheet Transactions Between Funds (20,575,857.13)

Change in Net Position

6,450,850.94

Net Position - September 1, 2022

78,070,694.14

Net Position - August 31, 2023

\$84,521,545.08

This page is intentionally blank

Employees

Faculty by Full-time/Part-time Status	65
Without Salary Faculty Appointments	65
Faculty by Race/Ethnicity & Gender	66
Faculty by Tenure Status & Gender	67
Classified Staff by Race/Ethnicity & Gender	68
Administrative & Professional (A&P) Staff by Race/Ethnicity & Gender	69
Employees by Employment Category	70
GSBS Faculty Membership by Institutional Affiliation	71
Budgeted Full-time Equivalent (FTE) Employees by Source of Funds	72
Faculty Honors	74

Faculty by Full-time/Part-time Status *Fall 2019 - 2023*

Source: PeopleSoft HCM, Certified CBM008 Faculty Report to the Texas Higher Education Coordinating Board, as of October 1, 2023

Notes (*pertains to all faculty and employee tables*):

- Faculty in the Graduate School of Biomedical Sciences are counted in their school of primary appointment.
- McGovern Medical School counts include Institute of Molecular Medicine faculty and/or staff.
- Per federal guidelines, postsecondary educational institutions must report data using nine specified reporting categories, which include: Nonresident aliens (for whom neither race nor ethnicity is reported), Hispanic/Latino of any race, For individuals who are non-Hispanic/Latino: American Indian or Alaska Native, Asian, Black or African American, Native Hawaiian or Other Pacific Islander, White, Two or more races, and Race and ethnicity unknown. <https://www2.ed.gov/policy/rschstat/guid/raceethnicity/questions.html>
- Academic A&P are included in faculty totals since incumbents must hold a faculty position in order to be eligible to serve in an Academic A&P role and are counted as faculty in the CBM008 certified faculty report to the THECB.

School or Unit	Fall 2019		Fall 2020		Fall 2021		Fall 2022		Fall 2023		Total
	FT	PT	FT	PT	FT	PT	FT	PT	FT	PT	
McWilliams School of Biomedical Informatics	39	4	40	3	39	3	44	6	53	5	58
School of Dentistry	121	110	115	86	118	80	116	92	114	106	220
Graduate School of Biomedical Sciences	-	-	-	-	-	-	2	0	2	0	2
McGovern Medical School	1,469	97	1,499	85	1,490	77	1,653	70	1,734	63	1,797
Cizik School of Nursing	91	99	91	63	91	58	98	48	100	41	141
School of Public Health	143	22	140	29	145	27	153	29	173	29	202
University Administration	3	0	5	0	5	0	13	0	7	0	7
Grand Total	1,866	332	1,890	266	1,888	245	2,079	245	2,183	244	2,427

Without Salary Faculty Appointments *FY 2014 - 2023*

Source: Johnson George, McGovern Medical School

Note: Effective FY 2023, data do not include cross-appointments (UTHealth Houston faculty appointed at more than one UTHealth Houston school).

School/Unit	FY 2014	FY 2015	FY 2016	FY 2017	FY 2018	FY 2019	FY 2020	FY 2021	FY 2022	FY 2023
McWilliams School of Biomedical Informatics	50	39	41	40	41	43	40	39	34	0
School of Dentistry	112	100	106	108	111	110	134	133	114	53
Graduate School of Biomedical Sciences	421	370	371	379	385	388	648	378	356	146
McGovern Medical School	549	556	560	584	587	622	352	506	313	308
Cizik School of Nursing	50	53	53	54	54	58	55	39	38	12
School of Public Health	338	304	283	304	315	283	308	204	176	98
University Administration	0	0	0	0	0	0	0	0	0	1
Grand Total	1,520	1,422	1,414	1,469	1,493	1,504	1,537	1,299	1,031	618

Faculty by Race/Ethnicity & Gender *Fall 2020 – 2023*

Source: PeopleSoft HCM, Certified CBM008 Faculty Report to the Texas Higher Education Coordinating Board, as of October 1, 2023

	Fall 2020			Fall 2021			Fall 2022			Fall 2023		
	Male	Female	Total	Male	Female	Total	Male	Female	Total	Male	Female	Total
McWilliams School of Biomedical Informatics												
Asian	17	6	23	16	7	23	18	9	27	24	9	33
Black	0	1	1	0	1	1	1	1	2	1	1	2
Hispanic	0	0	0	0	1	1	1	1	2	1	1	2
White	10	7	17	9	6	15	11	7	18	11	8	19
International	1	0	1	1	0	1	1	0	1	1	0	1
Unidentified	0	0	0	0	0	0	0	0	0	0	1	1
Pacific Islander	1	0	1	1	0	1	0	0	0	0	0	0
MSBIMI Total	29	14	43	27	15	42	32	18	50	38	20	58
School of Dentistry												
Asian	18	34	52	19	34	53	21	34	55	23	36	59
Black	5	7	12	5	7	12	6	8	14	5	8	13
Hispanic	9	16	25	9	16	25	11	16	27	12	17	29
American Indian	1	0	1	1	0	1	1	0	1	1	0	1
White	72	37	109	71	33	104	66	35	101	65	40	105
International	0	1	1	1	1	2	5	2	7	6	5	11
Unidentified	1	0	1	1	0	1	0	3	3	1	1	2
SOD Total	106	95	201	107	91	198	110	98	208	113	107	220
Graduate School of Biomedical Sciences												
Black	-	-	-	-	-	-	0	1	1	0	1	1
White	-	-	-	-	-	-	1	0	1	1	0	1
GSBS Total	-	-	-	-	-	-	1	1	2	1	1	2
McGovern Medical School												
Asian	304	236	540	297	230	527	336	264	600	357	268	625
Black	28	62	90	27	60	87	30	67	97	27	73	100
Hispanic	84	75	159	85	79	164	92	88	180	103	96	199
American Indian	3	0	3	3	0	3	3	0	3	3	0	3
White	418	308	726	411	297	708	427	319	746	427	333	760
International	27	23	50	27	24	51	32	31	63	37	29	66
Unidentified	8	8	16	14	13	27	18	16	34	20	24	44
MMS Total	872	712	1,584	864	703	1,567	938	785	1,723	974	823	1,797
Cizik School of Nursing												
Asian	4	19	23	3	21	24	2	17	19	2	20	22
Black	2	26	28	2	26	28	2	29	31	1	25	26
Hispanic	1	14	15	1	11	12	1	13	14	3	21	24
White	8	75	83	8	71	79	6	72	78	6	60	66
International	1	1	2	1	1	2	1	0	1	1	0	1
Unidentified	0	3	3	0	4	4	0	3	3	0	2	2
CSON Total	16	138	154	15	134	149	12	134	146	13	128	141
School of Public Health												
Asian	20	18	38	18	18	36	21	19	40	21	24	45
Black	2	5	7	2	5	7	3	6	9	3	7	10
Hispanic	5	12	17	5	19	24	9	21	30	10	24	34
Am. Indian	1	0	1	1	0	1	1	0	1	1	0	1
White	47	57	104	42	56	98	42	52	94	41	60	101
International	1	0	1	1	0	1	1	1	2	2	1	3
Unidentified	0	1	1	1	4	5	1	5	6	3	5	8
SPH Total	76	93	169	70	102	172	78	104	182	81	121	202
University Administration												
Asian	0	0	0	0	0	0	0	0	0	2	0	2
Black	0	0	0	0	0	0	0	1	1	0	0	0
Hispanic	1	0	1	1	0	1	1	0	1	0	0	0
White	2	2	4	2	2	4	5	5	10	3	2	5
Unidentified	0	0	0	0	0	0	0	1	1	0	0	0
UA Total	3	2	5	3	2	5	6	7	13	5	2	7
UTHealth Houston												
Asian	363	313	676	353	310	663	398	343	741	429	357	786
Black	37	101	138	36	99	135	42	113	155	37	115	152
Hispanic	100	117	217	101	126	227	115	139	254	129	159	288
Am. Indian	5	0	5	5	0	5	5	0	5	5	0	5
White	557	486	1,043	543	465	1,008	558	490	1,048	554	503	1,057
Pacific Islander	1	0	1	1	0	1	0	0	0	0	0	0
International	30	25	55	31	26	57	40	34	74	47	35	82
Unidentified	9	12	21	16	21	37	19	28	47	24	33	57
Grand Total	1,102	1,054	2,156	1,086	1,047	2,133	1,177	1,147	2,324	1,225	1,202	2,427

Faculty by Tenure Status & Gender *Fall 2020 – 2023*

Source: PeopleSoft HCM, Certified CBM008 Faculty Report to the Texas Higher Education Coordinating Board, as of October 1, 2023

	Fall 2020			Fall 2021			Fall 2022			Fall 2023		
	M	F	Total	M	F	Total	M	F	Total	M	F	Total
McWilliams School of Biomedical Informatics												
Tenured	8	2	10	8	2	10	11	4	15	11	5	16
Non-tenured, On Track	5	3	8	5	3	8	3	1	4	3	2	5
Non Tenure Track	16	9	25	14	10	24	18	13	31	24	13	37
MSBMI Total	29	14	43	27	15	42	32	18	50	38	20	58
School of Dentistry												
Tenured	21	8	29	21	6	27	26	4	30	21	4	25
Non-tenured, On Track	11	4	15	11	4	15	9	5	14	8	6	14
Non Tenure Track	74	83	157	75	81	156	75	89	164	84	97	181
SOD Total	106	95	201	107	91	198	110	98	208	113	107	220
Graduate School of Biomedical Sciences												
Tenured	0	0	0	0	0	0	1	0	1	1	0	1
Non Tenure Track	0	0	0	0	0	0	0	1	1	0	1	1
GSBS Total	0	0	0	0	0	0	1	1	2	1	1	2
McGovern Medical School												
Tenured	149	48	197	145	46	191	135	47	182	137	49	186
Non-tenured, On Track	46	29	75	41	27	68	42	28	70	54	42	96
Non Tenure Track	677	635	1,312	678	630	1,308	761	710	1,471	783	732	1,515
MMS Total	872	712	1,584	864	703	1,567	938	785	1,723	974	823	1,797
Cizik School of Nursing												
Tenured	2	7	9	1	7	8	1	8	9	1	8	9
Non-tenured, On Track	0	4	4	0	3	3	0	6	6	0	6	6
Non Tenure Track	14	127	141	14	124	138	11	120	131	12	114	126
CSON Total	16	138	154	15	134	149	12	134	146	13	128	141
School of Public Health												
Tenured	34	35	69	37	36	73	37	37	74	38	35	73
Non-tenured, On Track	23	18	41	17	25	42	17	21	38	22	33	55
Non Tenure Track	19	40	59	16	41	57	24	46	70	21	53	74
SPH Total	76	93	169	70	102	172	78	104	182	81	121	202
University Administration												
Tenured	0	0	0	0	0	0	4	1	5	2	0	2
Non Tenure Track	3	2	5	3	2	5	2	6	8	3	2	5
UA Total	3	2	5	3	2	5	6	7	13	5	2	7
UTHealth Houston												
Tenured	214	100	314	212	97	309	215	101	316	211	101	312
Non-tenured, On Track	85	58	143	74	62	136	71	61	132	87	89	176
Non Tenure Track	803	896	1,699	800	888	1,688	891	985	1,876	927	1,012	1,939
Grand Total	1,102	1,054	2,156	1,086	1,047	2,133	1,177	1,147	2,324	1,225	1,202	2,427

Classified Staff by Race/Ethnicity & Gender Fall 2023

Source: PeopleSoft HCM, as of October 1, 2023

Note: Totals do not include casual or student employees.

	Female	Male	Total
McWilliams School of Biomedical Informatics			
Am. Indian	0	0	0
Asian	12	11	23
Black	14	0	14
Hispanic	13	7	20
Two or More	1	0	1
Unidentified	2	1	3
Pacific Islander	0	0	0
White	16	7	23
Total MSBMI	58	26	84

School of Dentistry			
Am. Indian	0	0	0
Asian	30	6	36
Black	51	7	58
Hispanic	91	15	106
Two or More	1	2	3
Unidentified	1	1	2
Pacific Islander	0	0	0
White	25	8	33
Total SOD	199	39	238

Graduate School of Biomedical Sciences			
Am. Indian	0	0	0
Asian	6	1	7
Black	4	0	4
Hispanic	2	2	4
Two or More	0	0	0
Unidentified	0	0	0
Pacific Islander	0	0	0
White	5	3	8
Total GSBS	17	6	23

McGovern Medical School			
Am. Indian	8	0	8
Asian	439	201	640
Black	1,035	105	1,140
Hispanic	1,515	192	1,707
Two or More	74	12	86
Unidentified	59	20	79
Pacific Islander	6	2	8
White	1,063	248	1,311
Total MMS	4,199	780	4,979

Cizik School of Nursing			
Am. Indian	0	0	0
Asian	7	0	7
Black	27	4	31
Hispanic	23	6	29
Two or More	1	0	1
Unidentified	0	1	1
Pacific Islander	0	0	0
White	14	5	19
Total CSON	72	16	88

	Female	Male	Total
School of Public Health			
Am. Indian	0	0	0
Asian	41	18	59
Black	59	11	70
Hispanic	152	35	187
Two or More	6	2	8
Unidentified	9	3	12
Pacific Islander	0	0	0
White	82	33	115
Total SPH	349	102	451

University Administration			
Am. Indian	0	2	2
Asian	40	68	108
Black	143	94	237
Hispanic	113	110	223
Two or More	9	6	15
Unidentified	13	9	22
Pacific Islander	0	0	0
White	129	146	275
Total Admin	447	435	882

Texas Epidemic Public Health Institute			
Am. Indian	0	0	0
Asian	3	1	4
Black	2	0	2
Hispanic	10	3	13
Two or More	1	0	1
Unidentified	0	0	0
Pacific Islander	0	0	0
White	6	0	6
Total TEPHI	22	4	26

Behavioral Sciences Campus			
Am. Indian	0	1	1
Asian	62	62	124
Black	361	232	593
Hispanic	60	31	91
Two or More	5	3	8
Unidentified	10	7	17
Pacific Islander	1	0	1
White	39	26	65
Total BSC	538	362	900

UTHealth Houston			
Am. Indian	8	3	11
Asian	640	368	1,008
Black	1,696	453	2,149
Hispanic	1,979	401	2,380
Two or More	98	25	123
Unidentified	94	42	136
Pacific Islander	7	2	9
White	1,379	476	1,855
Grand Total	5,901	1,770	7,671

Administrative & Professional (A&P) Staff by Race/Ethnicity & Gender *Fall 2023*

Source: PeopleSoft HCM, as of October 1, 2023

Note: Totals include both Management and General A&P; Academic A&P are included in faculty totals since incumbents must hold a faculty position in order to be eligible to serve in an Academic A&P role and are counted as faculty in the CBM008 certified faculty report to the THECB.

	Female	Male	Total
McWilliams School of Biomedical Informatics			
Am. Indian	0	0	0
Asian	1	0	1
Black	1	0	1
Hispanic	2	0	2
Two or More	0	0	0
Unidentified	0	0	0
Pacific Islander	0	0	0
White	2	2	4
Total MSBMI	6	2	8
School of Dentistry			
Am. Indian	0	0	0
Asian	9	2	11
Black	4	0	4
Hispanic	3	0	3
Two or More	1	0	1
Unidentified	2	0	2
Pacific Islander	0	0	0
White	4	2	6
Total SOD	23	4	27
Graduate School of Biomedical Sciences			
Am. Indian	0	0	0
Asian	1	0	1
Black	1	0	1
Hispanic	1	0	1
Two or More	0	0	0
Unidentified	0	0	0
Pacific Islander	0	0	0
White	1	0	1
Total GSBS	4	0	4
McGovern Medical School			
Am. Indian	1	0	1
Asian	49	30	79
Black	36	4	40
Hispanic	28	13	41
Two or More	3	1	4
Unidentified	12	5	17
Pacific Islander	0	0	0
White	84	58	142
Total MMS	213	111	324
Cizik School of Nursing			
Am. Indian	0	0	0
Asian	0	0	0
Black	1	0	1
Hispanic	0	0	0
Two or More	0	0	0
Unidentified	0	0	0
Pacific Islander	0	0	0
White	3	2	5
Total CSON	4	2	6

	Female	Male	Total
School of Public Health			
Am. Indian	0	0	0
Asian	0	0	0
Black	1	0	1
Hispanic	0	2	2
Two or More	0	0	0
Unidentified	0	0	0
Pacific Islander	0	0	0
White	2	1	3
Total SPH	3	3	6
University Administration			
Am. Indian	0	0	0
Asian	3	3	6
Black	12	4	16
Hispanic	10	1	11
Two or More	1	2	3
Unidentified	1	0	1
Pacific Islander	0	0	0
White	44	25	69
Total Admin	71	35	106
Texas Epidemic Public Health Institute			
Am. Indian	0	0	0
Asian	0	0	0
Black	0	0	0
Hispanic	0	0	0
Two or More	0	0	0
Unidentified	0	0	0
Pacific Islander	0	0	0
White	0	0	0
Total TEPHI	0	0	0
Behavioral Sciences Campus			
Am. Indian	0	0	0
Asian	1	0	1
Black	5	3	8
Hispanic	0	0	0
Two or More	0	0	0
Unidentified	0	1	1
Pacific Islander	0	0	0
White	7	3	10
Total BSC	13	7	20
UTHealth Houston			
Am. Indian	1	0	1
Asian	64	35	99
Black	61	11	72
Hispanic	44	16	60
Two or More	5	3	8
Unidentified	15	6	21
Pacific Islander	0	0	0
White	147	93	240
Grand Total	337	164	501

Employees by Employment Category *Fall 2020 – 2023*

Sources: PeopleSoft HCM, Certified CBM008 Faculty Report to the Texas Higher Education Coordinating Board, as of October 1, 2023

Notes:

¹ A&P includes both Management and General Administrative and Professional staff; Academic A&P are included in faculty totals since incumbents must hold a faculty position in order to be eligible to serve in an Academic A&P role and are counted as faculty in the CBM008 certified faculty report to the THECB.

Totals do not include casual or student employees.

	Fall 2020	Fall 2021	Fall 2022	Fall 2023		Fall 2020	Fall 2021	Fall 2022	Fall 2023
McWilliams School of Biomedical Informatics					School of Public Health				
Faculty	43	42	50	58	Faculty	169	172	182	202
A&P ¹	8	8	9	8	A&P ¹	3	4	5	6
Classified	70	77	82	84	Classified	472	424	480	451
Residents	0	0	0	0	Residents	4	4	4	5
MSBMI Total	121	127	141	150	SPH Total	648	604	671	664
School of Dentistry					University Administration				
Faculty	201	198	208	220	Faculty	5	5	13	7
A&P ¹	12	20	23	27	A&P ¹	94	101	107	106
Classified	223	198	237	238	Classified	757	790	892	882
Residents	10	20	21	20	Residents	0	0	0	0
SOD Total	446	436	489	505	UA Total	856	896	1,012	995
Graduate School of Biomedical Sciences					Texas Epidemic Public Health Institute				
Faculty	0	0	2	2	Faculty	-	-	0	0
A&P ¹	1	3	5	4	A&P ¹	-	-	0	0
Classified	21	19	21	23	Classified	-	-	17	26
Residents	0	0	0	0	Residents	-	-	0	0
GSBS Total	22	22	28	29	TEPHI Total	-	-	17	26
McGovern Medical School					Behavioral Sciences Campus				
Faculty	1,584	1,567	1,723	1,797	Faculty	0	0	0	0
A&P ¹	332	327	402	324	A&P ¹	11	13	20	20
Classified	3,963	4,253	4,855	4,979	Classified	429	454	616	900
Residents	1,166	1,193	1,216	1,254	Residents	0	0	0	0
MMS Total	7,045	7,340	8,196	8,354	BSC Total	440	467	636	920
Cizik School of Nursing					UTHealth Houston				
Faculty	154	149	146	141	Faculty	2,156	2,133	2,324	2,427
A&P ¹	5	6	6	6	A&P ¹	466	482	577	501
Classified	90	89	89	88	Classified	6,025	6,304	7,289	7,671
Residents	0	0	0	0	Residents	1,180	1,217	1,241	1,279
CSON Total	249	244	241	235	Grand Total	9,827	10,136	11,431	11,878

GSBS Faculty Membership by Institution *Fall 2014 - 2023*

Source: Karen Weinberg, Graduate School of Biomedical Sciences

	Fall 2014	Fall 2015	Fall 2016	Fall 2017	Fall 2018	Fall 2019	Fall 2020	Fall 2021	Fall 2022	Fall 2023
UTHealth Houston										
McWilliams School of Biomedical Informatics	2	2	3	5	6	7	7	7	7	8
School of Dentistry	5	7	7	8	8	8	8	12	11	9
McGovern Medical School ¹	168	171	190	196	201	195	199	194	197	208
Cizik School of Nursing	0	0	0	0	0	0	0	0	0	0
School of Public Health	11	14	17	15	15	14	12	11	13	14
subtotal UTHealth Houston	186	194	217	224	230	224	226	224	228	239
UT MD Anderson Cancer Center	355	365	361	377	367	360	367	380	390	404
Texas A&M Institute of Biosciences and Tech	3	3	3	3	3	3	3	3	3	2
Other ¹		3	4	4	3	1	5	4	0	1
Grand Total GSBS	544	565	585	608	603	588	601	611	621	646

Budgeted Full-time Equivalent (FTE) Employees by Source of Funds *Fall 2023*

Source: Scott Barnett, Accounting & Budget

Note: Totals do not include casual or student employees.

	Faculty	A&P	Residents	Classified	Total
McWilliams School of Biomedical Informatics					
State Funds	14.06	5.85	0.00	41.53	61.44
Designated Funds	5.33	1.00	0.00	14.11	20.44
Contracts & Grant Funds	32.89	0.15	0.00	65.91	98.95
Current Restricted Funds	3.24	1.00	0.00	3.81	8.05
subtotal MSBMI	55.52	8.00	0.00	125.36	188.88
School of Dentistry					
State Funds	128.18	5.50	0.00	183.26	316.94
Designated Funds	17.65	2.50	20.00	70.72	110.87
Contracts & Grant Funds	5.91	0.00	0.00	20.07	25.98
Current Restricted Funds	1.07	0.00	0.00	15.30	16.37
subtotal SOD	152.81	8.00	20.00	289.35	470.16
Graduate School of Biomedical Sciences					
State Funds	0.00	5.10	0.00	62.59	67.69
Designated Funds	0.00	0.00	0.00	31.50	31.50
Contracts & Grant Funds	0.10	0.00	0.00	5.91	6.01
Current Restricted Funds	0.00	0.00	0.00	2.00	2.00
subtotal GSBS	0.10	5.10	0.00	102.00	107.20
McGovern Medical School					
State Funds	168.87	26.65	0.00	515.65	711.17
Designated Funds	1,472.75	108.06	1,256.00	3,594.23	6,431.04
Contracts & Grant Funds	194.82	4.52	0.00	745.66	945.00
Current Restricted Funds	64.85	0.62	0.00	264.92	330.39
subtotal MMS	1,901.29	139.85	1,256.00	5,120.46	8,417.60
Cizik School of Nursing					
State Funds	78.89	3.49	0.00	39.56	121.94
Designated Funds	14.69	1.40	0.00	28.76	44.85
Contracts & Grant Funds	5.85	0.11	0.00	21.29	27.25
Current Restricted Funds	2.47	0.00	0.00	6.13	8.60
subtotal CSON	101.90	5.00	0.00	95.74	202.64
School of Public Health					
State Funds	78.80	4.00	0.00	182.40	265.20
Designated Funds	6.17	2.00	5.00	57.98	71.15
Contracts & Grant Funds	77.13	0.00	0.00	284.26	361.39
Current Restricted Funds	15.96	0.00	0.00	68.85	84.81
subtotal SPH	178.06	6.00	5.00	593.49	782.55
Texas Epidemic Public Health Institute					
State Funds	0.00	0.00	0.00	1.25	1.25
Designated Funds	0.00	0.00	0.00	30.25	30.25
Current Restricted Funds	0.00	0.00	0.00	0.50	0.50
subtotal TEPHI	0.00	0.00	0.00	32.00	32.00
Behavioral Sciences Campus					
State Funds	0.00	20.50	0.00	858.97	879.47
Current Restricted Funds	0.00	0.00	0.00	2.50	2.50
subtotal BSC	0.00	20.50	0.00	861.47	881.97

continued **Budgeted FTE Employees by Source of Funds** *Fall 2023*

	Faculty	A&P	Residents	Classified	Total
University Administration					
State Funds	3.59	54.08	0.00	535.12	592.79
Designated Funds	1.12	36.44	0.00	134.90	172.46
Contracts & Grant Funds	0.00	0.50	0.00	12.48	12.98
Current Restricted Funds	0.00	0.88	0.00	3.80	4.68
subtotal UA	4.71	91.90	0.00	686.30	782.91
All Other					
State Funds	0.00	4.69	0.00	96.92	101.61
Designated Funds	5.00	0.31	0.00	75.00	80.31
Auxiliary Enterprises	0.00	6.00	0.00	45.19	51.19
Contracts & Grants	0.00	0.00	0.00	2.00	2.00
subtotal Other	5.00	11.00	0.00	219.11	235.11
UTHealth Houston					
State Funds	472.39	129.86	0.00	2,517.25	3,119.50
Designated Funds	1,522.71	151.71	1,281.00	4,037.45	6,992.87
Contracts & Grant Funds	316.70	5.28	0.00	1,157.58	1,479.56
Current Restricted Funds	87.59	2.50	0.00	367.81	457.90
Auxiliary Enterprises	0.00	6.00	0.00	45.19	51.19
Grand Total	2,399.39	295.35	1,281.00	8,125.28	12,101.02

Faculty Honors Fall 2023

Sources: NAM and AAAS online member lists; Lisa Cain, PhD, School of Dentistry; Cathy Rozmus, PhD, RN, FNAP, FAAN, Cizik School of Nursing

National Academy of Medicine (formerly the IOM)

Lu Ann Aday, PhD (emerita)
Gerard Francisco, MD
Irma Gigli, PhD (emerita)

American Academy of Arts & Sciences

Irma Gigli, PhD (emerita)
Jacqueline T. Hecht, PhD
John Spudich, PhD

American Academy of Nursing

Emily Barr, PhD, RN, CPNP-PC, CNM, FAAN
Jennifer Beauchamp, PhD, RN, FAAN
Jessica Coviello, DNP, RN, ANP-BC, FAAN
Maja Djukic, PhD, RN, FAAN
Allison Edwards, DrPH, MS, RN, CNE, CDDN, FAAN
Joan Engebretson, DrPH, AHN-BC, RN, FAAN (emerita)
Deanna Grimes, DrPH, RN, FAAN (emerita)
Sandra Hanneman, PhD, RN, FAAN
Joanne Hickey, PhD, RN, FAAN, FCCM (emerita)
Constance Johnson, PhD, MS, RN, FAAN
Thomas A. Mackey, PhD, APRN-BC, FAAN, FAANP
Melanie McEwen, PhD, RN, CNE, ANEF, FAAN
Janet Meininger, PhD, RN, FAAN (emerita)
Elda Ramirez, PhD, RN, FNP-BC, ENP-BC, FAAN, FAANP, FAEN
Linda A. Roussel, PhD, RN, CNL, NEA-BC, FAAN
Cathy L. Rozmus, PhD, RN, FNAP, FAAN
Susan Ruppert, PhD, RN, FNP-C, ANP-BC, FCCM, FNAP, FAANP, FAAN
Diane Santa Maria, DrPH, MSN, RN, PHNA-BC, FAAN
Patricia Starck, DSN, RN, FAAN (Dean Emerita)
Geraldine Wood, PhD, RN, FAAN

American Association for the Advancement of Science

Zhiqiang An, PhD
Michael Blackburn, PhD (emeritus)
L. Maximilian Buja., MD
John Byrne, PhD
Carmen Dessauer, PhD
Mary Farach-Carson, PhD
Kathleen R. Gibson, DDS
Jacqueline T. Hecht, PhD
Vasanthi Jayaraman, PhD
Samuel Kaplan, PhD (emeritus)
Theresa Koehler, PhD (emerita)
Michael Lorenz, PhD
Kevin Morano, PhD

American College of Dentists

Nikola Angelov, DDS, PhD
Dan Bentley, DDS
Douglas Bogan, DDS
Ralph A. Cooley, DDS
Jeryl English, DDS, MS
David Fray, DDS, MBA
Gary Frey, DDS
Fred A. Garrett, DDS, MS
Kathy Gibson, DDS
Randal M. Glenn, DDS
Thomas C. Harrison, DDS, MBA
Arthur H. Jeske, DMD, PhD
Ronald Johnson, DDS, MS
Harold Kolodney Jr., DMD, FACP
Stephen A. Laman, DDS
S. Jerry Long, DDS
Scott R. Makins, DDS, MS
Karen F. Novak, DDS, MS, Ph.D
Kalu Ogbureke, BDS, MSc, DMSc, JD
Peggy A. O'Neill, DDS, PhD
Joe M. Piazza, DDS
H. Philip Pierpont, DDS
June Sadowsky, DDS, MPH
Charles Streckfus, DDS, MA, FAAOM, FAGD
Michelle A. Thompson, DDS, FAGD
Ryan R. Vahdani, DDS, MHA, MAGD
John A. Valenza, DDS
Ben Warner, DDS, MD, MS
Jesse G. Welch, DDS
H. Clark Whitmire, Jr., DMD, JD
Mark Wong, BDS

International College of Dentists

Juliana Barros, DDS
Dan Bentley, DDS
Douglas Bogan, DDS
Shelley L. Canada, DDS
Robert Lee Clitheroe, DDS, PC
Scott Coleman, DDS
Richard Ronald Collins, DDS
Robert R. Debes, DDS
Jeryl D. English, DDS, MS
David F. Fray, DDS, MBA
Gary N. Frey, DDS
Leslie O. Fullerton, DDS, MSD
Kathy T. Gibson, DDS
Thomas C. Harrison, DDS, MBA
John F. Helfrick, DDS
Charles Hoopingarner, DDS
W. Kenneth Horwitz, DDS
David E. Jaramillo, DDS
Arthur H. Jeske, DMD, PhD
Cleverick D. Johnson, DDS, MS
Ronald Johnson, DDS
Sudarat Kiat-amnuay, DDS, MS
Timothy C. Kirkpatrick, DDS
Sheila H. Koh, DDS
Stephen Laman, DDS
Don Le, DDS
S. Jerry Long, DDS
Scott R. Makins, DDS, MS
Ana Neumann, DDS, MPH, PhD
Peggy A. O'Neill, DDS, PhD
Joe M. Piazza, DDS
H. Philip Pierpont, DDS
Victor A. Rodriguez, DDS
June Sadowsky, DDS, MPH
John D. Smith, Jr., DDS
Ryan R. Vahdani, DDS, MHA, MAGD
John A. Valenza, DDS
Vinu Sista, DDS, FAGD
Ben F. Warner, DDS, MD, MS
Jesse "Jay" G. Welch, DDS

Finance & Philanthropy

Total Funds Operating Budget by Unit & Revenue Source	77
Total Funds Operating Budget by Revenue Source	78
Total Funds Operating Budget by NACUBO Function	79
State Funds Operating Budget	80
Endowment Trends	81
Voluntary Support	81
Faculty Endowment Status	82
Endowed Scholarships	82

Total Funds Operating Budget by Unit & Revenue Source FY 2020 - 2024

Source: Scott Barnett, Accounting and Budget

	FY 2020	FY 2021	FY 2022	FY 2023	FY 2024
McWilliams School of Biomedical Informatics					
State Funds	\$4,729,229	\$4,750,081	\$4,678,668	\$4,744,292	\$5,627,805
Designated Funds	10,600,572	7,038,245	9,780,152	11,079,905	12,140,211
Contract & Grant Funds	11,189,638	8,487,463	11,351,743	11,622,631	14,105,091
Current Restricted Funds	834,657	964,099	1,231,973	1,245,542	597,335
subtotal MSBMI	\$27,354,096	\$21,239,888	\$27,042,536	\$28,692,370	\$32,470,442
School of Dentistry					
State Funds	\$26,372,420	\$25,411,689	\$26,659,389	\$27,808,771	\$28,383,341
Designated Funds	21,786,071	21,924,129	27,263,990	31,011,354	31,590,688
Contract & Grant Funds	2,975,232	2,631,878	1,803,494	3,089,157	6,685,861
Current Restricted Funds	2,151,646	2,007,711	1,979,972	2,068,592	2,555,680
subtotal SOD	\$53,285,369	\$51,975,407	\$57,706,845	\$63,977,874	\$69,215,570
Graduate School of Biomedical Sciences					
State Funds	\$1,934,913	\$2,049,526	\$2,050,380	\$2,203,891	\$2,638,668
Designated Funds	4,331,732	3,706,440	4,354,160	4,217,794	3,838,494
Contract & Grant Funds	1,248,108	1,601,167	1,650,627	1,496,291	1,823,345
Current Restricted Funds	974,738	1,067,714	1,101,623	943,165	1,433,250
subtotal GSBS	\$8,489,491	\$8,424,847	\$9,156,790	\$8,861,141	\$9,733,757
McGovern Medical School					
State Funds	\$51,832,003	\$51,941,423	\$55,095,823	\$55,685,067	\$63,094,146
Designated Funds	1,007,148,181	1,077,962,550	1,166,369,365	1,281,356,917	1,411,583,585
Contract & Grant Funds	122,594,556	131,267,307	136,965,482	145,887,463	230,589,065
Current Restricted Funds	79,781,473	82,847,955	92,358,380	95,670,760	22,433,781
subtotal MMS	\$1,261,356,213	\$1,344,019,235	\$1,450,789,050	\$1,578,600,207	\$1,727,700,577
Cizik School of Nursing					
State Funds	\$14,924,614	\$13,838,929	\$14,523,557	\$14,584,250	\$15,105,086
Designated Funds	10,995,024	11,827,346	12,855,492	13,497,991	13,333,826
Contract & Grant Funds	1,736,937	1,205,869	2,203,341	659,470	4,154,437
Current Restricted Funds	1,880,223	1,486,794	1,789,713	2,479,924	2,745,715
subtotal CSON	\$29,536,798	\$28,358,938	\$31,372,103	\$31,221,635	\$35,339,064
School of Public Health					
State Funds	\$19,498,274	\$18,244,433	\$21,759,139	\$22,948,302	\$24,210,300
Designated Funds	19,227,512	19,351,594	21,985,361	19,772,403	23,111,914
Contract & Grant Funds	32,534,024	30,898,342	67,368,727	60,882,317	72,859,553
Current Restricted Funds	10,444,556	8,130,725	7,496,039	7,340,202	3,477,468
subtotal SPH	\$81,704,366	\$76,625,094	\$118,609,266	\$110,943,224	\$123,659,235
Behavioral Sciences Campus					
State Funds	\$58,955,070	\$62,932,137	\$63,907,226	\$113,064,729	\$139,373,477
Designated Funds	1,006,335	839,461	763,293	1,384,944	1,549,680
Contract & Grant Funds	0	0	0	0	0
Current Restricted Funds	75,523	107,884	76,355	78,892	82,834
subtotal BSC	\$60,036,928	\$63,879,482	\$64,746,874	\$114,528,565	\$141,005,991
Texas Epidemic Public Health Institute					
Designated Funds	-	-	-	\$365,000	\$0
Contract & Grant Funds	-	-	-	20,552,325	\$13,095,238
subtotal TEPHI	-	-	-	\$20,917,325	\$13,095,238
Administrative and Institutional Support					
State Funds	\$144,074,172	\$146,451,328	\$122,203,376	\$127,141,644	\$141,174,621
Designated Funds	83,002,182	81,069,486	79,817,121	91,463,553	101,818,429
Contract & Grant Funds	5,000,000	668,458	9,039,469	13,100,548	12,695,392
Auxiliary Enterprise Funds	24,692,052	20,231,839	25,268,542	25,429,951	26,571,079
Current Restricted Funds	6,819,057	2,604,790	6,056,990	4,615,821	11,333,126
Unexpended Plant Funds	0	0	0	0	4,000,000
subtotal Admin	\$263,587,463	\$251,025,901	\$242,385,498	\$261,751,517	\$297,592,647
Grand Total					
State Funds	\$322,320,695	\$325,619,546	\$310,877,558	\$368,180,946	\$419,607,444
Designated Funds	1,158,097,609	1,223,719,251	1,323,188,934	1,454,149,861	1,598,966,827
Contract & Grant Funds	177,278,495	176,760,484	230,382,883	257,290,202	356,007,982
Current Restricted Funds	102,961,873	99,217,672	112,091,045	114,442,898	44,659,189
Auxiliary Enterprise Funds	24,692,052	20,231,839	25,268,542	25,429,951	26,571,079
Unexpended Plant Funds	0	0	0	0	4,000,000
Grand Total	\$1,785,350,724	\$1,845,548,792	\$2,001,808,962	\$2,219,493,858	\$2,449,812,521

Total Funds Operating Budget by Revenue Source *FY 2020 - 2024*

Source: Scott Barnett, Accounting and Budget

	FY 2020	FY 2021	FY 2022	FY 2023	FY 2024
State Funds					
General Revenue	\$234,376,206	\$235,475,906	\$221,400,922	\$225,384,793	\$248,888,599
Estimated E&G Income					
Student Tuition and Fees	23,500,937	23,721,532	24,854,016	25,516,348	24,822,602
Interest on Time Deposits	2,778,597	2,928,216	2,959,998	2,210,000	2,850,000
Other Income					
Income from Patients	7,900,000	7,900,000	7,900,000	9,000,000	9,000,000
State/Federal Grants & Contracts	370,043	370,043	367,710	5,975,094	7,261,856
Transfers from/to Other Funds	0	0	0	0	(4,000,000)
Tobacco Settlements	0	0	0	0	0
HPCP	53,394,912	55,223,849	53,394,912	100,094,711	130,784,387
Total State Funds	\$322,320,695	\$325,619,546	\$310,877,558	\$368,180,946	\$419,607,444
Designated Funds	\$1,158,097,609	\$1,223,719,251	\$1,323,188,934	\$1,454,149,861	\$1,598,966,827
Contract and Grant Funds	177,278,495	176,760,484	230,382,883	257,290,202	356,007,982
Current Restricted Funds	102,961,873	99,217,672	112,091,045	114,442,898	44,659,189
Auxiliary Enterprise Funds	24,692,052	20,231,839	25,268,542	25,429,951	26,571,079
Unexpended Plant Funds	0	0	0	0	4,000,000
Grand Total	\$1,785,350,724	\$1,845,548,792	\$2,001,808,962	\$2,219,493,858	\$2,449,812,521

Total Funds Operating Budget by NACUBO Function *FY 2020 - 2024*

Source: Scott Barnett, Accounting and Budget

	FY 2020	FY 2021	FY 2022	FY 2023	FY 2024
State Funds					
Instruction	\$101,963,841	\$102,869,309	\$108,078,594	\$111,130,340	\$107,807,983
Research	33,287,038	40,667,490	38,296,737	30,652,961	34,643,470
Public Service	98,115	99,739	206,801	105,364	110,531
Hospitals/Clinics	63,564,408	68,444,585	66,577,525	120,949,395	153,469,843
Academic Support	30,918,054	26,768,399	27,100,806	29,637,579	38,315,659
Sudent Services	2,733,377	2,469,742	2,975,112	3,119,244	3,836,979
Institutional Support	62,026,827	60,493,994	42,645,074	47,571,225	54,678,504
Operation & Maintenance of Plant	27,646,190	23,723,443	24,914,064	24,931,993	26,661,630
Scholarships & Fellowships	82,845	82,845	82,845	82,845	82,845
Total State Funds	\$322,320,695	\$325,619,546	\$310,877,558	\$368,180,946	\$419,607,444
Designated Funds					
Instruction	\$681,742,950	\$707,709,450	\$777,415,801	\$871,067,843	\$981,888,827
Research	33,257,251	25,405,642	34,246,184	43,985,800	61,367,574
Public Service	5,960,817	7,053,714	6,630,430	2,384,727	1,702,931
Hospitals/Clinics	327,541,520	372,473,120	380,409,329	402,554,568	424,240,209
Academic Support	32,257,171	36,572,027	39,572,138	42,198,035	42,391,565
Sudent Services	9,851,554	8,645,019	9,945,733	10,963,295	11,202,814
Institutional Support	49,688,739	47,834,969	54,776,377	59,882,532	55,666,098
Operation & Maintenance of Plant	13,633,494	13,885,534	16,061,913	17,961,095	17,157,576
Scholarships & Fellowships	4,164,113	4,139,776	4,131,029	3,151,966	3,349,233
Total Designated Funds	\$1,158,097,609	\$1,223,719,251	\$1,323,188,934	\$1,454,149,861	\$1,598,966,827
Contract & Grant Funds	\$177,278,495	\$176,760,484	\$230,382,883	\$257,290,202	\$356,007,982
Current Restricted Funds	102,961,873	99,217,672	112,091,045	114,442,898	44,659,189
Auxiliary Enterprise Funds	24,692,052	20,231,839	25,268,542	25,429,951	26,571,079
Unexpended Plant Funds	0	0	0	0	4,000,000
Grand Total	\$1,785,350,724	\$1,845,548,792	\$2,001,808,962	\$2,219,493,858	\$2,449,812,521

State Funds Operating Budget FY 2020 - 2024

Source: Scott Barnett, Accounting and Budget

Note:

¹ Beginning in FY 2022, the State Funds Budget no longer includes Tuition Revenue Bond (TRB) debt retirement.

	FY 2020	FY 2021	FY 2022	FY 2023	FY 2024
Instruction and Academic Support					
McWilliams School of Biomedical Informatics	\$2,792,447	\$2,326,079	\$3,141,491	\$3,340,197	\$3,989,381
School of Dentistry	22,882,802	21,131,240	21,978,374	22,321,543	23,085,665
Graduate School of Biomedical Sciences	1,934,913	2,049,526	2,050,380	2,203,891	2,638,668
McGovern Medical School	35,453,179	35,550,939	34,342,287	37,634,974	41,764,567
Cizik School of Nursing	14,924,614	13,838,929	14,523,557	14,584,250	15,105,086
School of Public Health	14,678,804	13,021,028	16,921,491	17,517,225	18,306,122
Library	363,176	378,643	518,990	492,720	477,350
Organized Activities	1,731,743	1,789,681	1,470,917	1,449,841	1,708,297
Special Items - Instructional Support	3,626,552	4,102,191	3,499,392	3,978,075	3,531,539
subtotal I&AS	\$98,388,230	\$94,188,256	\$98,446,879	\$103,522,716	\$110,606,675
Research					
Research Enhancement	\$13,866,965	\$19,760,520	\$15,141,066	\$17,543,598	\$23,350,954
Special Items - Research	9,544,504	9,828,361	9,785,123	9,238,133	9,689,295
subtotal Research	\$23,411,469	\$29,588,881	\$24,926,189	\$26,781,731	\$33,040,249
Public Service					
Special Items - Public Service	75,014	77,423	81,294	82,137	83,954
Health Care					
Patient Care Activities	\$49,789,718	\$53,027,074	\$54,354,090	\$103,347,265	\$122,701,252
Special Items - Health Care	3,932,312	4,112,477	3,929,758	3,707,086	3,730,553
subtotal Health Care	\$53,722,030	\$57,139,551	\$58,283,848	\$107,054,351	\$126,431,805
Institutional Support					
Institutional Support	\$39,178,709	\$38,408,448	\$39,443,798	\$39,942,650	\$44,153,482
Special Items - Institutional Support	0	0	0	0	0
subtotal Institutional Support	\$39,178,709	\$38,408,448	\$39,443,798	\$39,942,650	\$44,153,482
Student Services					
Student Services	2,089,798	1,917,145	2,374,635	2,431,630	2,914,395
Staff Benefits					
Staff Benefits	61,773,352	64,214,902	65,268,507	66,254,169	79,265,292
Operation and Maintenance of Plant					
Operation and Maintenance of Plant	\$24,370,688	\$20,813,835	\$21,315,286	\$21,746,016	\$22,888,713
Tuition Revenue Bond Debt Retirement ¹	18,749,650	18,749,350	0	0	0
subtotal O&M of Plant	\$43,120,338	\$39,563,185	\$21,315,286	\$21,746,016	\$22,888,713
Scholarships and Fellowships					
Scholarships and Fellowships	82,845	82,845	82,845	82,845	82,845
E&G Capital Projects					
Capital Projects	478,910	438,910	654,277	282,701	140,034
Grand Total	\$322,320,695	\$325,619,546	\$310,877,558	\$368,180,946	\$419,607,444

Endowment Trends *FY 2014 - 2023*

Source: Lisa Christison, Office of Development

As of August 31	Number of Endowments	Book Value	Market Value	Annual % Change in Book Value
2014	496	\$163,834,343.30	\$222,145,972.00	5.6%
2015	526	\$223,734,777.02	\$273,297,428.64	36.6%
2016	573	\$256,596,233.44	\$303,593,994.62	14.7%
2017	616	\$281,200,437.93	\$350,923,924.30	9.6%
2018	674	\$404,176,326.00	\$491,896,993.70	43.7%
2019	707	\$429,942,741.95	\$515,353,536.76	6.4%
2020	739	\$472,569,705.46	\$580,988,350.51	9.9%
2021	774	\$542,752,772.45	\$805,140,881.09	14.9%
2022	840	\$670,250,341.65	\$855,493,985.63	23.5%
2023	888	\$713,505,824.74	\$898,098,108.49	6.5%

Voluntary Support *FY 2019 - 2023*

Source: Lisa Christison, Office of Development

Source of Cash Received	FY 2019	FY 2020	FY 2021	FY 2022	FY 2023
Alumni	\$961,698	\$1,233,125	\$2,234,110	\$1,019,059	\$1,507,906
Individual	19,905,654	12,041,659	33,885,508	28,436,216	14,317,186
Foundation	25,200,853	24,700,892	22,101,640	25,064,823	32,516,662
Corporation	2,886,117	3,935,326	3,084,434	2,397,067	2,084,921
Organization	9,393,146	6,597,947	23,594,673	5,717,655	7,412,752
Grand Total	\$58,347,468	\$48,508,949	\$84,900,365	\$62,634,820	\$57,839,427

Faculty Endowment Status *FY 2023*

Source: Lisa Christison, Office of Development

Status as of August 31, 2023			
Type	Total Number	Number Filled	Percent Filled
Distinguished University Chair	17	13	76%
Distinguished Chair	54	46	85%
Chair	91	76	84%
Distinguished Professorship	51	41	80%
Professorship	91	68	75%
Faculty Fellowship	3	2	67%
Grand Total	307	246	80%

Endowed Scholarships *FY 2014 - 2023*

Source: Lisa Christison, Office of Development

As of August 31	Number of Endowed Scholarships	Book Value	Market Value
2014	182	\$14,848,207.86	\$19,640,388.55
2015	189	\$16,985,526.72	\$20,971,126.43
2016	198	\$19,837,518.64	\$23,572,550.37
2017	210	\$22,894,153.42	\$29,786,791.77
2018	227	\$25,863,744.09	\$34,127,110.55
2019	252	\$35,735,181.28	\$43,347,777.18
2020	259	\$40,674,229.86	\$50,423,109.76
2021	271	\$48,529,904.99	\$72,143,925.03
2022	291	\$55,053,123.43	\$70,832,364.93
2023	305	\$62,484,257.45	\$77,996,502.81

Physical Facilities

Capital Equipment Expenditures by Asset Category	85
Facilities Operating Expenditures (Owned)	86
Purchased Utilities	86
Space Inventory by Function	87
Space Inventory by Program	88

Capital Equipment Expenditures by Asset Category FY 2014 - 2023

Source: Sonia Aguilar, Capital Assets Management

Asset Category Description	FY 2014	FY 2015	FY 2016	FY 2017	FY 2018
Office equipment & furniture	\$6,915	\$19,137	\$71,535	\$60,808	\$29,397
Physical plant & police	404,117	195,308	345,267	1,211,526	571,231
Audio-visual & media production	759,303	229,481	197,846	213,209	433,520
Medical, lab, & research	4,609,153	7,415,587	7,617,539	7,813,742	11,675,633
Hospital & patient care	644,049	50,568	95,365	298,137	237,844
Instructional, teaching, & library	684,730	437,974	1,207,045	316,644	406,655
Data processing & computer related	8,914,029	8,465,693	6,399,759	9,501,088	14,401,667
Print shop	0	976,796	0	0	0
Food service	7,447	44,828	9,250	23,334	0
Recreational	0	0	0	0	19,475
Grand Total	\$16,029,744	\$17,835,374	\$15,943,606	\$19,438,486	\$27,775,422

Asset Category Description	FY 2019	FY 2020	FY 2021	FY 2022	FY 2023
Office equipment & furniture	\$13,106	\$5,599	\$8,734	\$0	\$10,574
Physical plant & police	322,979	194,617	432,221	501,826	789,397
Audio-visual & media production	1,611,675	705,519	392,436	160,107	659,441
Medical, lab, & research	7,084,665	6,151,127	5,985,350	8,488,946	13,950,156
Hospital & patient care	487,204	1,396,330	2,444,122	2,770,182	2,019,670
Instructional, teaching, & library	577,361	214,604	356,532	272,545	488,515
Data processing & computer related	10,103,874	10,568,513	39,953,211	6,134,770	5,620,932
Print shop	0	0	0	0	0
Food service	19,510	0	0	0	17,333
Recreational	34,494	0	0	322,451	1,750
Grand Total	\$20,254,866	\$19,236,309	\$49,572,606	\$18,650,827	\$23,557,768

Facilities Operating Expenditures (Owned) FY 2023

Source: Addison Marshall, Facilities Planning & Engineering

Building	Purchased Utilities	Maintenance & Operation	Housekeeping	FY 2023 Total
Cyclotron Facility	\$25,043	\$32,128	\$6,704	\$63,875
Medical School	3,404,098	1,655,713	659,974	5,719,785
Operations Center	158,247	428,383	2,080	588,711
Reuel A. Stallones	764,020	487,821	202,836	1,454,677
University Center Tower	749,580	1,542,218	365,721	2,657,519
RAHC	102,549	177,254	36,648	316,451
School of Nursing	159,268	447,075	196,482	802,825
UT Professional Building	944,636	3,163,127	677,399	4,785,161
Sarofim Research Building	1,189,486	621,548	182,808	1,993,842
Medical School Expansion	1,784,872	545,340	131,350	2,461,563
Behavioral & Biomedical Sciences	1,195,913	421,754	175,987	1,793,654
School of Dentistry	1,514,893	644,451	532,225	2,691,568
Jesse Jones Library	269,664	504,796	178,584	953,044
Cooley Life Center	24,350	34,195	20,762	79,308
Grand Total UTHealth Houston	\$12,286,620	\$10,705,803	\$3,369,560	\$26,361,983

Purchased Utilities FY 2014 - 2023

Source: Addison Marshall, Facilities Planning & Engineering

Note: Figures include utilities costs for THI lease space as well as electricity, chilled water, steam, water, sewer, waste collection and natural gas for owned buildings exclusive of South Campus Housing and Recreation Center.

Year	Total Expenditures	Annual % change
FY 2014	\$16,094,284	1.0%
FY 2015	\$16,030,465	-0.4%
FY 2016	\$15,516,958	-3.2%
FY 2017	\$16,051,988	3.4%
FY 2018	\$14,402,039	-10.3%
FY 2019	\$13,792,606	-4.2%
FY 2020	\$12,579,216	-8.8%
FY 2021	\$12,278,641	-2.4%
FY 2022	\$12,567,336	2.4%
FY 2023	\$12,286,620	-2.2%

Space Inventory by Function FY 2014 - 2023

Source: Bret Wandel, Facilities Planning & Engineering

Note:

¹ASF = Assignable Square Feet

	FY 2014	FY 2015	FY 2016	FY 2017	FY 2018
Classroom	95,526	93,742	94,267	104,817	108,720
Lab	511,232	510,441	505,524	495,615	500,145
Office	1,011,563	1,059,029	1,073,248	1,089,188	1,110,442
Study	28,771	28,666	56,299	53,678	50,948
Special Use	72,802	72,656	72,511	82,427	83,911
General Use	115,547	110,025	116,673	110,565	111,956
Support	1,270,780	1,374,932	1,378,613	1,437,460	1,282,285
Health Care	657,763	604,837	796,029	829,915	858,364
Residential	579,456	700,835	701,180	701,177	701,177
Vacant	15,954	19,097	46,778	34,592	26,832
Total ASF¹	4,359,395	4,574,260	4,841,120	4,939,432	4,834,780

	FY 2019	FY 2020	FY 2021	FY 2022	FY 2023
Classroom	115,388	118,550	118,824	116,088	115,953
Lab	499,551	506,317	504,331	499,261	506,281
Office	1,123,169	1,153,181	1,156,039	1,210,523	1,139,028
Study	50,111	42,010	42,654	41,947	42,864
Special Use	86,323	86,298	87,031	87,020	80,103
General Use	110,640	111,944	111,680	129,609	132,475
Support	1,291,093	1,289,336	1,289,847	1,284,466	1,274,720
Health Care	849,445	936,510	908,987	1,139,320	1,132,292
Residential	701,177	701,177	701,177	701,177	701,259
Vacant	38,100	13,350	13,347	11,060	59,098
Total ASF¹	4,864,997	4,964,673	4,933,917	5,220,469	5,184,073

Space Inventory by Program FY 2014 - 2023

Source: Bret Wandel, Facilities Planning & Engineering

Note:

¹ASF = Assignable Square Feet

	FY 2014	FY 2015	FY 2016	FY 2017	FY 2018
Instruction	713,570	705,168	789,367	816,415	833,009
Research	623,567	637,984	632,133	649,040	662,826
Public Service	344,861	344,639	431,399	446,261	503,823
Academic Support	447,171	441,677	473,075	487,061	464,480
Student Service	1,292,653	1,266,994	1,264,790	1,261,884	1,177,016
Institutional Support	718,423	958,019	958,469	1,000,801	932,395
Physical Plant Operations	66,075	62,318	64,612	75,768	76,050
Independent Operations	137,121	138,364	180,496	167,610	158,349
Vacant	15,954	19,097	46,778	34,592	26,832
Total ASF¹	4,359,395	4,574,260	4,841,120	4,939,432	4,834,780

	FY 2019	FY 2020	FY 2021	FY 2022	FY 2023
Instruction	832,059	885,378	880,147	1,011,532	1,003,126
Research	664,434	664,110	684,365	678,386	655,252
Public Service	529,176	574,176	546,966	702,217	708,557
Academic Support	459,070	479,816	469,834	466,657	501,814
Student Service	1,176,680	1,176,879	1,173,087	1,174,005	1,169,265
Institutional Support	939,107	952,211	971,094	1,000,084	906,808
Physical Plant Operations	72,785	71,110	74,681	76,456	88,984
Independent Operations	153,587	147,643	120,397	100,072	91,169
Vacant	38,100	13,350	13,347	11,060	59,098
Total ASF¹	4,864,997	4,964,673	4,933,917	5,220,469	5,184,073