

Fact Book | **2023**



Editor's note

The *Fact Book* is truly a university-wide effort. We are personally indebted to the many departments and individuals who lend their time, expertise, and support year after year. Without them, this publication would cease to exist. We therefore wish to publicly acknowledge the efforts of all involved and especially thank the following:

Kevin A. Morano, PhD
Senior Vice President for Academic & Faculty Affairs

UTHealth Houston Academic Administration

Deanne Hernandez, MPA
Diana Keosayian, EdD
Kathy Rodgers

Also

Sonya Aguilar	Capital Assets Management
Scott Barnett	Accounting and Budget
April Bass	McGovern Medical School
Heather Beckles-Bright	Student Financial Services
Leslie Beckman	Office of Postdoctoral Affairs
Lisa Cain, PhD	School of Dentistry
Nguyen Cao	Graduate School of Biomedical Sciences
Lisa Christison	Office of Development
Sarah Donahue	School of Public Health
Melissa Ethington, PhD, RN	Cizik School of Nursing
Christine Flynn, PhD	Office of Technology Management
James Fore	Student Financial Services
Jaime Hargrave	School of Biomedical Informatics
Karen Hayes, RN, BSN	Cizik School of Nursing
Heidemarie Hellriegel	Capital Assets Management
Rose Hochner	Office of the President
Robert Jenkins	Office of the Registrar
Kathleen Kreidler	Sponsored Projects Administration
Frank La	Sponsored Projects Administration
Addison Marshall	Facilities Planning & Engineering
Dana McDowelle, PhD	McGovern Medical School
Shalizeh Patel, DDS, MEd	School of Dentistry
Lois Pierson, CPA	Behavioral Sciences Campus
Cathy Rozmus, PhD, RN	Cizik School of Nursing
Claire Singletary, MS, CGC	Graduate School of Biomedical Sciences
Robert Spears, PhD	School of Dentistry
Sue Thomey	Bursar's Office
Elizabeth Vinson	Office of Faculty Affairs & Development
Bret Wandel	Facilities Planning & Engineering
Karen Weinberg	Graduate School of Biomedical Sciences
Tera Wright	Office of the Registrar

Deanne Hernandez, MPA
Associate Vice President, Institutional Research, Assessment & Accreditation
Editor, *Fact Book 2023*

Preface *Fact Book 2023*

The Office of Academic Administration is pleased to introduce the thirty-third edition of The University of Texas Health Science Center at Houston's (UTHealth Houston) annual *Fact Book*.

Data, where appropriate, align with:

- The university's Annual Financial Report;
- Certified Texas Higher Education Coordinating Board reports (enrollment, degrees conferred, faculty, medical residents);
- Performance Measures reported to the Legislative Budget Board (uncompensated charity care, medical outpatient clinical activity – visits); and/or
- Other State and UT System required reports (financial aid, research expenditures, facilities, philanthropy)

Most tables portray FY 2022 data, which covers the period of September 1, 2021 – August 31, 2022. Enrollment and employee figures are as of October 2022 and the executive organization chart is current as of press time.

Table titles will indicate the date(s) covered.

UTHealth Houston *Mission Statement*

As a comprehensive health science university, the mission of The University of Texas Health Science Center at Houston is to educate health science professionals, discover and translate advances in the biomedical and social sciences, and model the best practices in clinical care and public health.

We pursue this mission in order to advance the quality of human life by enhancing the diagnosis, treatment, and prevention of disease and injury, as well as promoting individual health and community well-being.

UTHealth Houston *Vision Statement*

Excellence above all in the quest to be an acknowledged leader in the collaboration to treat, cure and prevent the most common diseases of our time through education, research and clinical practice.

Please direct questions or comments regarding *Fact Book 2023* to:

UTHealth Houston Academic Administration
7000 Fannin, Suite 1420
Houston, Texas 77030

UCT 1420 (for intra-institutional mail)

713.500.3192 telephone

Deanne Hernandez, MPA
Associate Vice President for Institutional Research, Assessment & Accreditation
Fact Book Editor

The University of Texas Health Science Center at Houston is accredited by the Southern Association of Colleges and Schools Commission on Colleges (SACSCOC) to award baccalaureate, masters, doctoral, and professional degrees. Degree-granting institutions also may offer credentials such as certificates and diplomas at approved degree levels. Questions about the accreditation of The University of Texas Health Science Center at Houston may be directed in writing to the Southern Association of Colleges and Schools Commission on Colleges at 1866 Southern Lane, Decatur, GA 30033-4097, by calling (404) 679-4500, or by using information available on SACSCOC's website (www.sacscoc.org).

The University of Texas Health Science Center at Houston ("University") is committed to providing a working and learning environment free from discrimination and harassment. The University prohibits discrimination and/or harassment by any member of the University community on the basis of race, color, religion, sex (including pregnancy), gender, sexual orientation, national origin, age, disability, genetic information, gender identity or expression, veteran status or any other basis prohibited by law. No person shall be excluded from participation in, denied the benefits of, or be subject to discrimination under any program or activity sponsored or conducted by the University or any of its component entities on any basis prohibited by applicable law or University policy.

Table of Contents *Fact Book 2023*

Preface	3
The University of Texas Board of Regents	6
UTHealth Executive Leadership	7
Education	9
Summary of Academic Programs & Accreditation	11
Applicant Profile	12
Headcount Enrollment by Full-time/Part-time Status	13
Headcount Enrollment by Race/Ethnicity	14
Headcount Enrollment by Level	16
Headcount Enrollment by Level, Race/Ethnicity & Gender	17
Headcount Enrollment by Academic Program	18
Headcount Enrollment by Residency	20
Full-time Equivalent (FTE) Student Enrollment	21
GSBS Students by Institutional Affiliation	22
Postdoctoral Research Fellows	22
Licensure Examination Results	23
Degrees Conferred by School	24
Degrees Conferred by Academic Program	26
Degrees Conferred by Level & Race/Ethnicity	28
Profile of Medical Residents in ACGME Accredited Programs	29
McGovern Medical School Graduating Class Specialty Choices	30
School of Dentistry Residents & Postgraduate Students	31
Medical (MCAT) & Dental (DAT) Applicant Scores	32
Tuition & Fees	33
Student Financial Aid Profile	34
Total Student Financial Aid Awards by School	35
Total Student Financial Aid Awards by Major Program	36
Average Student Financial Aid Awards by School	37
Average Student Debt on Graduation	38
Total Graduates by School	39
Research	41
Research Expenditures by Unit	43
UT Health-Related Institutions Research Expenditures by Source	44
Trends in UT Health-Related Institutions Research Expenditures	44
Research Expenditures by Sponsoring Agency	45
Intellectual Property Activity	46
Grant Proposals by Unit & Type	47
Contract & Grant Awards by Unit & Type	48
Contract & Grant Awards by Source	50
NIH Awards by Unit	52
Federal Awards by Agency	53
Principal Investigators by Unit	53
Sponsored Project Activity Report	54

Patient Care	55
McGovern Medical School Outpatient Clinical Activity - Visits	57
Un-sponsored Medical & Dental Charity Care Provided by Faculty	57
School of Dentistry Clinical Activity: Patient Visits	58
School of Dentistry Clinical Activity: Patient Treatments	59
UT Health Services Patient Visits	60
Behavioral Sciences Campus Clinical Activity	60
Medical Practice Plan Summary of Operations	61
Employees	63
Faculty by Full-time/Part-time Status	65
Without Salary Faculty Appointments	65
Faculty by Race/Ethnicity & Gender	66
Faculty by Tenure Status & Gender	67
Classified Staff by Race/Ethnicity & Gender	68
Administrative & Professional (A&P) Staff by Race/Ethnicity & Gender	69
Employees by Employment Category	70
Budgeted Full-time Equivalent (FTE) Employees by Source of Funds	71
GSBS Faculty Membership by Institutional Affiliation	73
Faculty Honors	74
Finance & Philanthropy	75
Total Funds Operating Budget by Unit & Revenue Source	77
Total Funds Operating Budget by Revenue Source	78
Total Funds Operating Budget by NACUBO Function	79
State Funds Operating Budget	80
Endowment Trends	81
Voluntary Support	81
Faculty Endowment Status	82
Endowed Scholarships	82
Physical Facilities	83
Capital Equipment Expenditures by Asset Category	85
Facilities Operating Expenditures (Owned)	86
Purchased Utilities	86
Space Inventory by Function	87
Space Inventory by Program	88

The University of Texas Board of Regents

source: <https://utsystem.edu/regents>

The Board of Regents, the governing body for The University of Texas System, is composed of nine members who are appointed by the Governor and confirmed by the Senate. Terms for Regents are scheduled for six years each and staggered so that three members' terms will usually expire on February 1 in odd-numbered years. In addition, the Governor appoints a Student Regent for a one-year term that expires on May 31.

Throughout the more than 100-year history of The U. T. System, the Board has been composed of dedicated and distinguished Texans who have been strong advocates of excellence in academic programs, scientific inquiry, and responsible public service.

Kevin P. Eltife, *Chairman*

Janiece Longoria, *Vice Chairman*

James C. "Rad" Weaver, *Vice Chairman*

Christina Melton Crain

R. Steven Hicks

Jodie Lee Jiles

Nolan Perez, MD

Stewart W. Steadman

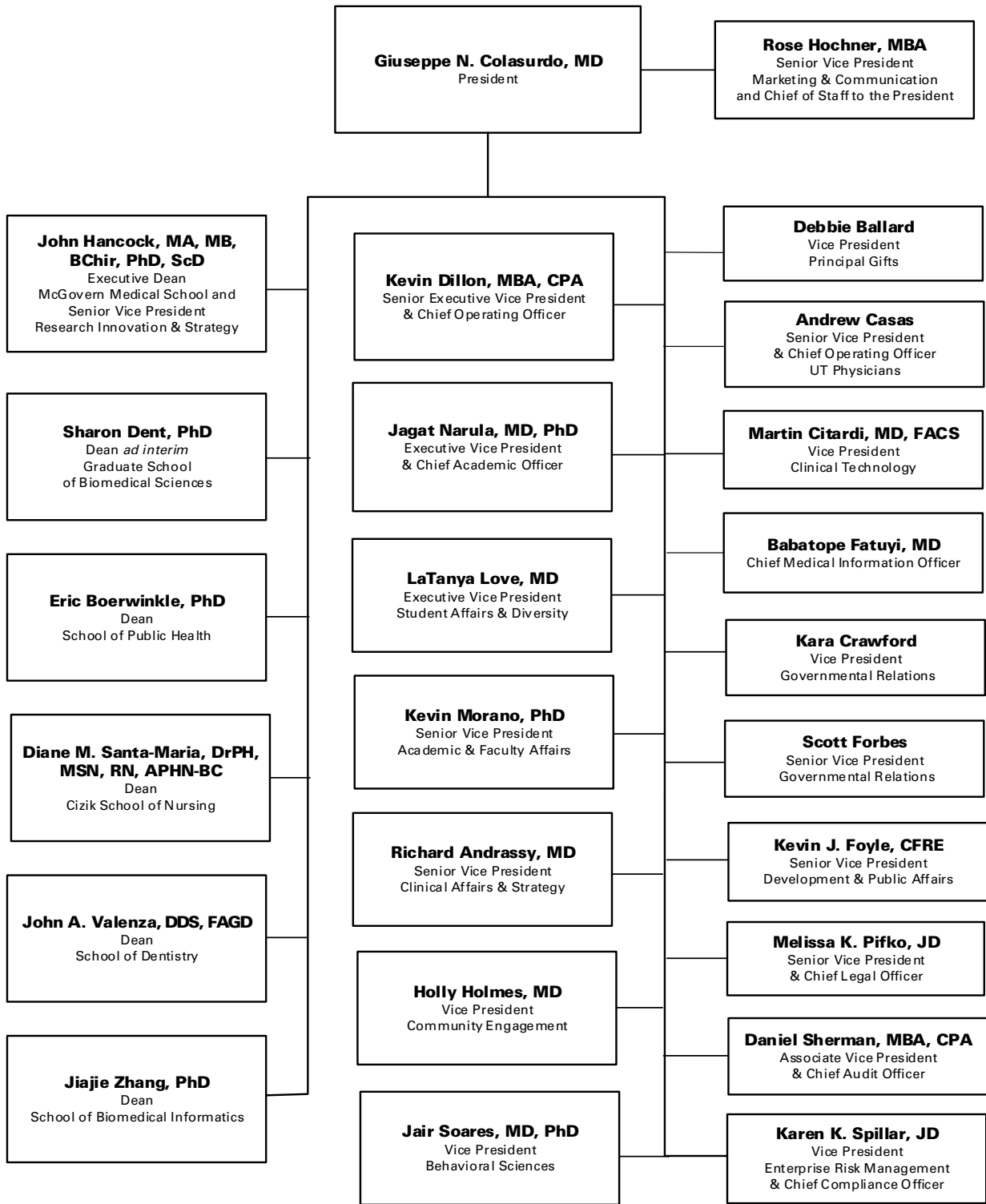
Kelcy L. Warren

Neelesh C. "Neel" Mutyala, *Student Regent*

Francie A. Frederick, General Counsel to the Board of Regents

UTHealth Houston Organization

source: Rose Hochner, Office of the President



This page is intentionally blank

Education

Summary of Academic Programs & Accreditation	11
Applicant Profile	12
Headcount Enrollment by Full-time/Part-time Status	13
Headcount Enrollment by Race/Ethnicity	14
Headcount Enrollment by Level	16
Headcount Enrollment by Level, Race/Ethnicity & Gender	17
Headcount Enrollment by Academic Program	18
Headcount Enrollment by Residency	20
Full-time Equivalent (FTE) Student Enrollment	21
GSBS Students by Institutional Affiliation	22
Postdoctoral Research Fellows	22
Licensure Examination Results	23
Degrees Conferred by School	24
Degrees Conferred by Academic Program	26
Degrees Conferred by Level & Race/Ethnicity	28
Profile of Medical Residents in ACGME Accredited Programs	29
McGovern Medical School Graduating Class Specialty Choices	30
School of Dentistry Residents & Postgraduate Students	31
Medical (MCAT) & Dental (DAT) Applicant Scores	32
Tuition & Fees	33
Student Financial Aid Profile	34
Total Student Financial Aid Awards by School	35
Total Student Financial Aid Awards by Major Program	36
Average Student Financial Aid Awards by School	37
Average Student Debt on Graduation	38
Total Graduates by School	39

Summary of Academic Programs & Accreditation

The University of Texas Health Science Center at Houston is accredited by the Southern Association of Colleges and Schools Commission on Colleges (SACSCOC) to award baccalaureate, masters, doctoral, and professional degrees. Degree-granting institutions also may offer credentials such as certificates and diplomas at approved degree levels. Questions about the accreditation of The University of Texas Health Science Center at Houston may be directed in writing to the Southern Association of Colleges and Schools Commission on Colleges at 1866 Southern Lane, Decatur, GA 30033-4097, by calling (404) 679-4500, or by using information available on SACSCOC's website (www.sacscoc.org).

The list below provides a comprehensive listing of each accrediting agency that reviews one or more UTHealth Houston academic programs.

	Agency	Last	Next
The University of Texas			
Health Science Center at Houston	SACSCOC	2021	2031 ¹
School of Biomedical Informatics			
MS	CAHIIM	2019	2026
School of Dentistry			
DDS	CODA	2019	2027
BS (Dental Hygiene)	CODA	2019	2027
Certificate in Advanced Education Programs	CODA	2019	2027
Certificate in Dental Hygiene	CODA	2019	2027
Certificate in Oral & Maxillofacial Surgery	CODA	2021	2026
MD Anderson Cancer Center UTHealth Houston Graduate School of Biomedical Sciences			
Certificate in Medical Physics	CAMPEP	2017	2023
MS in Medical Physics	CAMPEP	2017	2023
MS in Genetic Counseling	ACGC	2021	2029
McGovern Medical School			
MD	LCME	2019	2028
Cizik School of Nursing			
BSN, MSN, DNP	CCNE	2021	2031
Nurse Anesthesia	CANAEP	2021	2032
School of Public Health			
MPH, MS, DrPH, PhD	CEPH	2019	2027

SACSCOC: Southern Association of Colleges & Schools Commission on Colleges
 CAHIIM: Commission on Accreditation for Health Informatics and Information Management Education
 CODA: Commission on Dental Accreditation (*federally-recognized*)
 CAMPEP: Commission on Accreditation of Medical Physics Education Programs
 ACGC: Accreditation Council for Genetic Counseling
 LCME: Liaison Committee on Medical Education (*federally-recognized*)
 CCNE: Commission on Collegiate Nursing Education (*federally-recognized*)
 CANAEP: Council on Accreditation of Nurse Anesthesia Educational Programs (*federally-recognized*)
 CEPH: Commission on the Education of Public Health (*federally-recognized*)

¹ UTHealth Houston's Fifth Year Interim Report is due to SACSCOC in March 2027.

Applicant Profile Fall 2022

sources: Robert Jenkins and Tera Wright, Office of the Registrar; Sarah Donahue, School of Public Health; Karen Weinberg and Nguyen Cao, Graduate School of Biomedical Sciences; Deborah Garcia, McGovern Medical School; Jaime Hargrave, School of Biomedical Informatics; Robert Spears, PhD, School of Dentistry; Melissa D. Ethington, PhD, RN, Cizik School of Nursing

¹ In this and all other pertinent Fact Book tables, minorities include Black, Hispanic, Native American, and Pacific Islander.

	Grand Total				
	Male + Female	Male	Female	Unidentified Gender	Minorities¹
School of Biomedical Informatics					
Applications received	204	75	129	1	48
Admitted	154	54	100	0	26
Denied	30	12	18	0	14
No action/pending/incomplete	20	9	11	1	8
School of Dentistry					
<i>DDS</i> Applications received	1,452	694	758	0	339
Admitted	105	47	58	0	27
Denied	1,263	615	648	0	292
Withdrew after acceptance	49	23	26	0	11
Withdrew before acceptance	23	11	12	0	11
<i>DH</i> Applications received	116	14	101	1	61
Admitted	35	5	30	0	15
Denied	81	9	71	1	46
<i>Acad</i> Applications Received	149	12	133	4	65
Admitted	35	3	31	1	10
Denied	101	9	89	3	49
Pending/Incomplete/Waitlist	13	0	13	0	6
Graduate School of Biomedical Sciences					
Applications received	1,460	455	803	202	166
Admitted	199	70	129	0	45
Denied	1,224	369	653	202	121
No action/pending	37	16	21	0	10
McGovern Medical School					
<i>MD</i> Applications received	5,875	2,708	3,157	10	1,513
Interviewed	1,116	521	595	1	286
Admitted	240	118	122	0	47
First Generation College	18	10	7	1	n/a
Veterans	4	3	1	0	n/a
<i>Acad</i> Applications Received	28	16	12	0	1
Admitted	27	15	12	0	1
Denied	1	1	0	0	0
Pending/Incomplete/Waitlist	0	0	0	0	0
Cizik School of Nursing					
Applications received	983	155	807	21	492
Admitted	328	45	274	9	155
Denied	594	101	482	11	306
Pending/incomplete/waitlist	61	9	51	1	31
School of Public Health					
Applications received	1,495	410	1,078	7	399
Admitted	439	106	331	2	132
Denied	404	127	275	2	132
Pending/incomplete/waitlist	652	177	472	3	135
Grand Total UTHealth Houston					
Applications received	11,762	4,539	6,978	246	3,084
Admitted	1,562	463	1,087	12	458

Headcount Enrollment by Full-time/Part-time Status *Fall 2018-2022*

source: Robert Jenkins and Tera Wright, Office of the Registrar
CBM001 Certified Enrollment Report to the Texas Higher Education Coordinating Board, October 2022

Note: Per THECB guidelines, online students living outside the state of Texas are not included in the enrollment counts.

	Fall 2018		Fall 2019		Fall 2020		Fall 2021		Fall 2022	
	Number	Percent	Number	Percent	Number	Percent	Number	Percent	Number	Percent
School of Biomedical Informatics										
Full-time	47	18%	48	19%	65	22%	102	31%	102	29%
Part-time	208	82%	211	81%	225	78%	226	69%	253	71%
SBMI Total	255		259		290		328		355	
School of Dentistry										
Full-time	551	97%	558	96%	555	97%	549	96%	545	96%
Part-time	19	3%	21	4%	19	3%	24	4%	24	4%
SOD Total	570		579		574		573		569	
Graduate School of Biomedical Sciences										
Full-time	397	87%	416	87%	413	86%	424	91%	435	92%
Part-time	57	13%	64	13%	67	14%	41	9%	38	8%
GSBS Total	454		480		480		465		473	
McGovern Medical School										
Full-time	1,096	100%	975	91%	982	88%	963	89%	973	90%
Part-time	1	0%	96	9%	134	12%	118	11%	113	10%
MMS Total	1,097		1,071		1,116		1,081		1,086	
Cizik School of Nursing										
Full-time	756	44%	726	45%	692	42%	705	44%	640	51%
Part-time	966	56%	900	55%	945	58%	897	56%	618	49%
SON Total	1,722		1,626		1,637		1,602		1,258	
School of Public Health										
Full-time	630	51%	637	49%	793	52%	891	52%	798	51%
Part-time	607	49%	665	51%	721	48%	818	48%	780	49%
SPH Total	1,237		1,302		1,514		1,709		1,578	
UTHealth Houston Total										
Full-time	3,477	65%	3,360	63%	3,500	62%	3,634	63%	3,493	66%
Part-time	1,858	35%	1,957	37%	2,111	38%	2,124	37%	1,826	34%
Grand Total	5,335		5,317		5,611		5,758		5,319	

Headcount Enrollment by Race/Ethnicity *Fall 2020 - 2022*

source: Robert Jenkins and Tera Wright, Office of the Registrar
CBM001 Certified Enrollment Report to the Texas Higher Education Coordinating Board, October 2022

Notes (*pertains to all education tables that report race/ethnicity breakouts*):

Per federal guidelines, postsecondary educational institutions must report data using nine specified reporting categories, which include: Nonresident aliens (for whom neither race nor ethnicity is reported), Hispanic/Latino of any race, For individuals who are non-Hispanic/Latino: American Indian or Alaska Native, Asian, Black or African American, Native Hawaiian or Other Pacific Islander, White, Two or more races, and Race and ethnicity unknown.

	Fall 2020			Fall 2021			Fall 2022		
	Number	Percent	Percent excluding Internat'l	Number	Percent	Percent excluding Internat'l	Number	Percent	Percent excluding Internat'l
School of Biomedical Informatics									
American Indian	1	0%	0%	1	0%	0%	2	1%	1%
Asian	57	20%	24%	62	19%	24%	63	18%	22%
Black	38	13%	16%	27	8%	11%	31	9%	11%
Hispanic	48	17%	20%	49	15%	19%	62	17%	22%
International	51	18%	-	73	22%	-	73	21%	-
Multi-Racial	5	2%	2%	4	1%	2%	5	1%	2%
Pacific Islander	0	0%	0%	0	0%	0%	0	0%	0%
Unidentified	17	6%	7%	24	7%	9%	28	8%	10%
White	73	25%	31%	88	27%	35%	91	26%	32%
SBMI Total	290			328			355		
School of Dentistry									
American Indian	1	0%	0%	0	0%	0%	1	0%	0%
Asian	178	31%	32%	169	29%	30%	174	31%	32%
Black	28	5%	5%	25	4%	4%	23	4%	4%
Hispanic	101	18%	18%	103	18%	18%	106	19%	19%
International	16	3%	-	15	3%	-	18	3%	-
Multi-Racial	16	3%	3%	20	3%	4%	17	3%	3%
Pacific Islander	1	0%	0%	1	0%	0%	0	0%	0%
Unidentified	17	3%	3%	36	6%	6%	34	6%	6%
White	216	38%	39%	204	36%	37%	196	34%	36%
SOD Total	574			573			569		
Graduate School of Biomedical Sciences									
American Indian	1	0%	0%	1	0%	0%	0	0%	0%
Asian	51	11%	17%	44	9%	16%	42	9%	15%
Black	19	4%	6%	23	5%	8%	23	5%	8%
Hispanic	41	9%	14%	42	9%	15%	55	12%	20%
International	187	39%	-	184	40%	-	196	41%	-
Multi-Racial	7	1%	2%	9	2%	3%	8	2%	3%
Unidentified	27	6%	9%	24	5%	9%	24	5%	9%
White	147	31%	50%	138	30%	49%	125	26%	45%
GSBS Total	480			465			473		
McGovern Medical School									
American Indian	4	0%	0%	3	0%	0%	2	0%	0%
Asian	232	21%	22%	246	23%	24%	265	24%	26%
Black	69	6%	7%	73	7%	7%	75	7%	7%
Hispanic	160	14%	15%	150	14%	15%	146	13%	15%
International	82	7%	-	76	7%	-	83	8%	-
Multi-Racial	32	3%	3%	32	3%	3%	32	3%	3%
Unidentified	58	5%	6%	57	5%	6%	38	3%	4%
White	479	43%	46%	444	41%	44%	445	41%	44%
MMS Total	1,116			1,081			1,086		

continued **Headcount Enrollment by Race/Ethnicity Fall 2020 - 2022**

	Fall 2020			Fall 2021			Fall 2022		
	Number	Percent	Percent excluding Internat'l	Number	Percent	Percent excluding Internat'l	Number	Percent	Percent excluding Internat'l
Cizik School of Nursing									
American Indian	1	0%	0%	1	0%	0%	0	0%	0%
Asian	325	20%	20%	336	21%	21%	269	21%	22%
Black	332	20%	21%	318	20%	20%	249	20%	20%
Hispanic	349	21%	22%	360	22%	23%	296	24%	24%
International	23	1%	-	19	1%	-	10	1%	-
Multi-Racial	49	3%	3%	40	2%	3%	29	2%	2%
Pacific Islander	1	0%	0%	4	0%	0%	1	0%	0%
Unidentified	25	2%	2%	21	1%	1%	41	3%	3%
White	532	32%	33%	503	31%	32%	363	29%	29%
CSON Total	1,637			1,602			1,258		
School of Public Health									
American Indian	2	0%	0%	2	0%	0%	1	0%	0%
Asian	234	15%	18%	279	16%	20%	253	16%	20%
Black	190	13%	14%	218	13%	15%	178	11%	14%
Hispanic	309	20%	24%	390	23%	27%	338	21%	27%
International	201	13%	-	281	16%	-	311	20%	-
Multi-Racial	42	3%	3%	32	2%	2%	24	2%	2%
Pacific Islander	1	0%	0%	1	0%	0%	1	0%	0%
Unidentified	80	5%	6%	76	4%	5%	74	5%	6%
White	455	30%	35%	430	25%	30%	398	25%	31%
SPH Total	1,514			1,709			1,578		
UTHealth Houston Total									
American Indian	10	0%	0%	8	0%	0%	6	0%	0%
Asian	1,077	19%	21%	1,136	20%	22%	1,066	20%	23%
Black	676	12%	13%	684	12%	13%	579	11%	13%
Hispanic	1,008	18%	20%	1,094	19%	21%	1,003	19%	22%
International	560	10%	-	648	11%	-	691	13%	-
Multi-Racial	151	3%	3%	137	2%	3%	115	2%	2%
Pacific Islander	3	0%	0%	6	0%	0%	2	0%	0%
Unidentified	224	4%	4%	238	4%	5%	239	4%	5%
White	1,902	34%	38%	1,807	31%	35%	1,618	30%	35%
Grand Total	5,611			5,758			5,319		

Headcount Enrollment by Level *Fall 2015 - 2022*

source: Robert Jenkins and Tera Wright, Office of the Registrar
CBM001 Certified Enrollment Report to the Texas Higher Education Coordinating Board, October 2022

	2015	2016	2017	2018	2019	2020	2021	2022
School of Biomedical Informatics								
Graduate	140	148	156	140	157	216	266	280
Certificate	100	143	130	109	100	72	62	72
Non-degree	5	0	3	6	2	2	0	3
SBMI Total	245	291	289	255	259	290	328	355
School of Dentistry								
Undergraduate	72	70	65	72	80	69	54	48
Undergraduate Certificate	0	11	14	4	2	7	8	10
Graduate	29	35	36	37	30	31	45	61
Professional	402	405	406	412	418	418	422	419
Post Graduate Certificate	45	39	44	45	49	49	44	31
SOD Total	548	560	565	570	579	574	573	569
Graduate School of Biomedical Sciences								
Graduate	411	402	392	407	431	430	432	444
Certificate	0	0	0	0	3	3	12	19
Non-degree	26	23	14	47	46	47	21	10
GSBS Total	437	425	406	454	480	480	465	473
McGovern Medical School								
Graduate	10	13	14	13	15	11	11	17
Certificate	64	94	91	95	80	118	104	95
Non-degree	4	0	5	5	2	8	4	2
Professional	982	968	967	984	974	979	962	972
MMS Total	1,060	1,075	1,077	1,097	1,071	1,116	1,081	1,086
Cizik School of Nursing								
Undergraduate	597	596	629	641	589	611	623	496
Graduate	573	813	945	1,002	948	941	897	726
Non-degree	77	67	73	79	89	85	82	36
CSON Total	,247	1,476	1,647	1,722	1,626	1,637	1,602	1,258
School of Public Health								
Graduate	1,094	1,086	1,109	1,105	1,144	1,375	1,584	1,481
Certificate	109	105	117	108	131	112	106	80
Non-degree	71	32	31	24	27	27	19	17
SPH Total	1,274	1,223	1,257	1,237	1,302	1,514	1,709	1,578
UTHealth Houston Total								
Undergraduate	669	666	694	713	669	680	677	544
Undergraduate Certificate	0	11	14	4	2	7	8	10
Graduate	2,257	2,497	2,652	2,704	2,725	3,004	3,235	3,009
Professional	1,384	1,373	1,373	1,396	1,392	1,397	1,384	1,391
Post Graduate Certificate	0	39	44	45	49	49	44	31
Certificate	318	342	338	312	314	305	284	266
Non-degree	183	122	126	161	166	169	126	68
Grand Total	4,811	5,050	5,241	5,335	5,317	5,611	5,758	5,319

Headcount Enrollment by Level, Race/Ethnicity & Gender Fall 2022

source: Robert Jenkins and Tera Wright, Office of the Registrar
 CBM001 Certified Enrollment Report to the Texas Higher Education Coordinating Board, October 2022

School/Level	Asian		Black		Internation'l		Hispanic		American Indian		White		Unidentified		Pacific Islander		Multi-Racial		Grand Total		
	M	F	M	F	M	F	M	F	M	F	M	F	M	F	M	F	M	F	M	F	Total
School of Biomedical Informatics																					
Non-Degree	0	0	0	0	0	0	1	1	0	1	0	0	0	0	0	0	0	0	1	2	3
Certificate	8	6	2	5	1	3	9	10	0	0	6	17	2	3	0	0	0	0	28	44	72
Graduate	21	28	11	13	37	32	18	23	1	0	22	46	6	17	0	0	1	4	117	163	280
Total SBMI	29	34	13	18	38	35	28	34	1	1	28	63	8	20	0	0	1	4	146	209	355
School of Dentistry																					
1st Year Dental	10	26	2	2	0	0	9	12	1	0	13	25	1	2	0	0	2	1	38	68	106
2nd Year Dental	9	22	0	1	0	0	5	13	0	0	27	19	2	2	0	0	2	3	45	60	105
3rd Year Dental	10	17	1	7	0	0	8	10	0	0	19	21	6	3	0	0	2	0	46	58	104
4th Year Dental	13	25	1	1	2	0	6	8	0	0	15	18	6	6	0	0	1	2	44	60	104
Total SOD - DDS	42	90	4	11	2	0	28	43	1	0	74	83	15	13	0	0	7	6	173	246	419
School of Dentistry - Academic																					
Graduate	3	12	1	3	3	5	3	7	0	0	7	14	1	1	0	0	1	0	19	42	61
Post Graduate Certificate	4	5	0	1	2	3	0	3	0	0	2	8	0	1	0	0	0	2	8	23	31
Undergraduate Certificate	0	6	0	0	0	1	0	0	0	0	0	2	0	1	0	0	0	0	0	10	10
Undergraduate	1	11	0	3	0	2	1	21	0	0	0	6	1	1	0	0	0	1	3	45	48
Total SOD Acad	8	34	1	7	5	11	4	31	0	0	9	30	2	4	0	0	1	3	30	120	150
Graduate School of Biomedical Sciences																					
Non-Degree	0	0	0	2	0	3	2	0	0	0	3	0	0	0	0	0	0	0	5	5	10
Certificate	0	1	0	2	0	2	1	4	0	0	1	7	0	1	0	0	0	0	2	17	19
Graduate	13	28	5	14	81	110	15	33	0	0	46	68	6	17	0	0	2	6	168	276	444
Total GSBS	13	29	5	18	81	115	18	37	0	0	50	75	6	18	0	0	2	6	175	298	473
McGovern Medical School																					
1st Year Medical	35	41	6	9	0	0	23	12	0	0	43	56	3	3	0	0	7	3	117	124	241
2nd Year Medical	36	37	8	12	0	0	20	26	0	0	47	51	5	0	0	0	1	3	117	129	246
3rd Year Medical	17	27	6	11	0	0	21	21	0	0	54	63	6	8	0	0	3	3	107	133	240
4th Year Medical	26	41	4	15	0	0	14	9	1	1	50	63	4	5	0	0	4	8	103	142	245
Total MMS - MD	114	146	24	47	0	0	78	68	1	1	194	233	18	16	0	0	15	17	444	528	972
McGovern Medical School - Academic																					
Non-Degree	0	1	0	0	0	0	0	0	0	0	0	1	0	0	0	0	0	0	0	2	2
Certificate	1	1	0	2	45	37	0	0	0	0	3	3	0	3	0	0	0	0	49	46	95
Graduate	1	1	0	2	1	0	0	0	0	0	8	3	0	1	0	0	0	0	10	7	17
Total MMS Acad	2	3	0	4	46	37	0	0	0	0	11	7	0	4	0	0	0	0	59	55	114
Cizik School of Nursing																					
Non-Degree	2	4	0	7	1	0	2	4	0	0	2	13	0	1	0	0	0	0	7	29	36
Undergraduate	29	114	12	61	0	2	18	124	0	0	9	94	1	18	1	0	2	11	72	424	496
Graduate	12	108	14	155	0	7	26	122	0	0	33	212	3	18	0	0	4	12	92	634	726
Total CSON	43	226	26	223	1	9	46	250	0	0	44	319	4	37	1	0	6	23	171	1,087	1,258
School of Public Health																					
Non-Degree	0	0	2	1	0	0	0	0	0	0	4	10	0	0	0	0	0	0	6	11	17
Certificate	7	14	0	6	0	2	4	15	0	0	3	22	2	3	0	0	0	2	16	64	80
Graduate	62	170	25	144	102	207	74	245	0	1	81	278	18	51	0	1	2	20	364	1,117	1,481
Total SPH	69	184	27	151	102	209	78	260	0	1	88	310	20	54	0	1	2	22	386	1,192	1,578
Grand Total	320	746	100	480	275	416	280	723	3	3	498	1,120	73	166	1	1	34	81	1,584	3,735	5,319

Headcount Enrollment by Academic Program *Fall 2022*

source: Robert Jenkins and Tera Wright, Office of the Registrar
 CBM001 Certified Enrollment Report to the Texas Higher Education Coordinating Board, October 2022

School of Biomedical Informatics		Graduate School of Biomedical Sciences, cont'd		McGovern Medical School	
MS in Biomedical Informatics	283	Epigenetics & Molecular Carcinogenesis	0	Doctor of Medicine (MD)	972
PhD in Biomedical Informatics	49	Human & Molecular Genetics	0	MS in Clinical Research	17
Doctorate of Health Informatics (DHI)	23	Quantitative Sciences	0		
		Biostatistics, Bioinformatics & Systems Biology	0	Cizik School of Nursing	
School of Dentistry		Microbiology & Infectious Diseases	0	Bachelor of Science in Nursing (BSN)	496
Doctor of Dental Surgery (DDS)	419	Microbiology & Molecular Genetics	0	<u>Master of Science in Nursing (MSN)</u>	
<u>Master of Science in Dentistry (MSD)</u>		Therapeutics & Pharmacology	0	Nurse Practitioner	
Pediatric Dentistry	0	Immunology	0	Adult/Gerontology Acute Care	71
Orthodontics	14	Neuroscience	0	Adult/Gerontology Primary Care	9
Endodontics	10	<u>Specialized Master of Science (SMS)</u>		Emergency/Trauma	19
Prosthodontics	16	Genetic Counseling	20	Family Nurse Practitioner	197
Periodontics	12	Medical Physics	6	Psychiatric Mental Health	33
<u>Dental Postgraduate Certificate</u>		<u>Doctor of Philosophy (PhD)</u>		Nursing Education	8
Advanced Education in General Dentistry (AEGD)	7	Biomedical Sciences	61	Nursing Leadership & Administration	54
General Practice Residency (GPR)	6	Medical Physics	40	<u>Doctor in Nursing Practice (DNP)</u>	267
Endodontics	0	Biochemistry & Cell Biology	16	Nurse Anesthetist (BSN-DNP)	68
Oral and Maxillofacial Surgery	2	Biochemistry & Molecular Biology	1	Doctor of Philosophy in Nursing (PhD)	36
Orthodontics	0	Cell & Regulatory Biology	0		
Pediatric Dentistry	16	Cancer Biology (26.0911.00)	62		
Periodontics	0	Clinical & Translational Sciences	0		
Prosthodontics	0	Therapeutics & Pharmacology	8		
Master of Science Dental Hygiene (MSDH)	7	Genetics & Epigenetics	38		
Bachelor of Science Dental Hygiene (BDH)	48	Genes & Development	1		
Certificate in Dental Hygiene	12	Epigenetics & Molecular Carcinogenesis	2		
		Human & Molecular Genetics	0		
Graduate School of Biomedical Sciences		Immunology	52		
<u>Master of Science (MS)</u>		Microbiology & Infectious Diseases	19		
Biomedical Sciences	54	Microbiology & Molecular Genetics	0		
Biochemistry and Cell Biology	0	Neuroscience	32		
Biochemistry and Molecular Biology	0	Quantitative Sciences	44		
Cell and Regulatory Biology	0	Biostatistics, Bioinformatics & Systems Biology	0		
Cancer Biology	0				
Clinical & Translational Sciences	17				
Genetics & Epigenetics	0				
Genes & Development	0				

continued **Headcount Enrollment by Academic Program Fall 2022**

School of Public Health

Master of Public Health (MPH)

Austin

Epidemiology	51
Health Promotion/Health Education	23
Public Health	114

Brownsville

Epidemiology	8
Health Promotion/Health Education	4
Public Health	13

Dallas

Epidemiology	31
Health Promotion/Health Education	16
Public Health	47

El Paso

Environmental Health	4
Health Promotion/Health Education	2
Health Care Management	5
Public Health	8
Public Health (MD/MPH El Paso)	8

San Antonio

Accelerated	
Environmental Health	5
Epidemiology	26
Health Promotion/Health Education	20
Public Health	57

Houston

Biostatistics	
Community Health Practice	37
Environmental Health	21
Epidemiology	220
Health Promotion/Health Education	97
Health Services Organization	32
Healthcare Management	84
Public Health	53

Master of Science (MS)

Austin

Epidemiology	0
--------------	---

Brownsville

Epidemiology	1
--------------	---

Dallas

Epidemiology	1
--------------	---

San Antonio

Biostatistics	1
Epidemiology	0

Houston

Biostatistics	40
Epidemiology	0
Environmental Sciences	0

Doctor of Public Health (DrPH)

Austin

Health Promotion/Health Education	7
-----------------------------------	---

Brownsville

Health Promotion/Health Education	10
-----------------------------------	----

Dallas

Health Promotion/Health Education	5
-----------------------------------	---

El Paso

Health Promotion/Health Education	7
-----------------------------------	---

San Antonio

Community Health Practice	1
---------------------------	---

Environmental Health

Environmental Health	2
----------------------	---

Houston

Community Health Practice	28
---------------------------	----

Health Promotion/Health Education	0
-----------------------------------	---

Health Services Organizations	0
-------------------------------	---

Environmental Health	1
----------------------	---

Doctor of Philosophy (PhD)

Austin

Behavioral Sciences and Health Promotion	11
--	----

Epidemiology	27
--------------	----

Brownsville

Epidemiology	8
--------------	---

Dallas

Behavioral Sciences and Health Promotion	4
--	---

Epidemiology	16
--------------	----

El Paso

Environmental Sciences	
------------------------	--

Total Worker Health	4
---------------------	---

Environmental Disease Prevention	0
----------------------------------	---

San Antonio

Environmental Sciences	
------------------------	--

Total Worker Health	
---------------------	--

Environmental Disease Prevention	4
----------------------------------	---

Epidemiology	10
--------------	----

Houston

Behavioral Sciences and Health Promotion	48
--	----

Biostatistics	140
---------------	-----

Environmental Sciences	3
------------------------	---

Total Worker Health	5
---------------------	---

Environmental Disease Prevention	8
----------------------------------	---

Epidemiology	92
--------------	----

Management & Policy Sciences	57
------------------------------	----

Health Economics and Health Services Research	21
---	----

Health Promotion/Health Education	30
-----------------------------------	----

Headcount Enrollment by Residency *Fall 2013 - 2022*

source: Robert Jenkins and Tera Wright, Office of the Registrar
CBM001 Certified Enrollment Report to the Texas Higher Education Coordinating Board, October 2022

	2013	2014	2015	2016	2017	2018	2019	2020	2021	2022
School of Biomedical Informatics										
Texas Residents	103	141	198	234	247	217	217	245	263	290
Out of State	12	12	15	18	10	2	3	5	4	10
Foreign	12	18	32	39	32	36	39	40	61	55
SBMI Total	127	171	245	291	289	255	259	290	328	355
School of Dentistry										
Texas Residents	491	504	512	516	513	520	515	511	515	513
Out of State	21	22	26	28	36	36	52	49	43	43
Foreign	10	10	10	16	16	14	12	14	15	13
UTSD Total	522	536	548	560	565	570	579	574	573	569
Graduate School of Biomedical Sciences										
Texas Residents	207	188	162	155	143	165	181	178	174	174
Out of State	123	115	124	121	125	127	118	118	107	109
Foreign	183	169	151	149	138	162	181	184	184	190
GSBS Total	513	472	437	425	406	454	480	480	465	473
McGovern Medical School										
Texas Residents	952	926	937	954	965	964	950	957	935	940
Out of State	59	68	77	58	53	58	59	68	61	57
Foreign	51	51	46	63	59	75	62	91	85	89
MMS Total	1,062	1,045	1,060	1,075	1,077	1,097	1,071	1,116	1,081	1,086
Cizik School of Nursing										
Texas Residents	1,091	1,047	1,222	1,450	1,611	1,698	1,604	1,614	1,583	1,235
Out of State	11	14	13	16	22	15	16	14	13	10
Foreign	14	11	12	11	14	9	6	8	6	13
CSON Total	1,116	1,072	1,247	1,477	1,647	1,722	1,626	1,636	1,602	1,258
School of Public Health										
Texas Residents	887	876	875	882	945	940	999	1,217	1,314	1,162
Out of State	112	126	137	116	122	104	107	121	146	137
Foreign	275	258	262	225	190	193	196	177	249	279
SPH Total	1,274	1,260	1,274	1,223	1,257	1,237	1,302	1,515	1,709	1,578
UTHealth Houston Total										
Texas Residents	3,731	3,682	3,906	4,191	4,424	4,504	4,466	4,722	4,784	4,314
Out of State	338	357	392	357	368	342	355	375	374	366
Foreign	545	517	513	503	449	489	496	514	600	639
Grand Total	4,614	4,556	4,811	5,051	5,241	5,335	5,317	5,611	5,758	5,319

Full-time Equivalent (FTE) Student Enrollment *Fall 2013 - 2022*

source: Robert Jenkins and Tera Wright, Office of the Registrar

	2013	2014	2015	2016	2017
School of Biomedical Informatics	80.18	106.11	140.81	173.00	169.14
School of Dentistry	506.99	522.83	534.88	545.10	547.32
Graduate School of Biomedical Sciences	478.69	440.67	408.40	400.49	383.19
McGovern Medical School	997.80	987.56	1,009.56	1,004.44	1,006.22
Cizik School of Nursing	965.56	927.25	1,023.89	1,185.18	1,317.53
School of Public Health	956.95	938.22	958.03	932.17	949.39
Grand Total UTHealth Houston	3,905.99	3,816.53	3,934.76	4,240.38	4,372.79

	2018	2019	2020	2021	2022
School of Biomedical Informatics	144.73	143.91	174.80	212.83	222.33
School of Dentistry	555.09	562.65	560.00	556.11	553.79
Graduate School of Biomedical Sciences	414.43	439.31	434.51	439.68	447.47
McGovern Medical School	1,012.83	1,000.11	1,009.34	997.79	1,006.56
Cizik School of Nursing	1,363.53	1,284.89	1,286.49	1,254.69	1,020.37
School of Public Health	945.00	979.45	1,186.33	1,416.60	1,224.52
Grand Total UTHealth Houston	4,435.61	4,410.32	4,651.47	4,877.70	4,475.04

GSBS Students by Institutional Affiliation *Fall 2013 - 2022*

source: Karen Weinberg, Graduate School of Biomedical Sciences

¹ Other includes registered degree seeking students who have not formally chosen an advisor. It does not include non-degree students.

Note: Totals do not match to the Certified CBM001 Enrollment Report due to timing.

	2013	2014	2015	2016	2017	2018	2019	2020	2021	2022
UTHealth Houston										
School of Dentistry	0	0	0	0	1	2	3	4	4	4
McGovern Medical School	104	98	84	95	100	92	83	86	91	100
School of Public Health	7	3	0	0	2	4	2	0	0	0
subtotal UTHealth Houston	111	101	84	95	103	98	88	90	95	104
UT MD Anderson Cancer Center	293	265	243	222	229	216	250	263	252	253
TAMU Institute of Biosciences and Technology	2	2	1	1	0	0	0	0	0	0
Other ¹	80	74	87	86	77	106	109	103	106	107
Grand Total GSBS	486	442	415	404	409	420	447	456	453	464

Postdoctoral Research Fellows *Fall 2013 - 2022*

source: Leslie Beckman, Office of Postdoctoral Affairs

Fall	Total
2013	158
2014	208
2015	224
2016	239
2017	241
2018	230
2019	218
2020	222
2021	232
2022	212

Licensure Examination Results 2022

sources: Dana McDowelle, PhD, McGovern Medical School; Robert Spears, PhD, School of Dentistry; Melissa D. Ethington, PhD, RN, Cizik School of Nursing; Claire Singletary, MS, CGC, Graduate School of Biomedical Sciences

2022 Dental and Dental Hygiene National Board Exams

	Total Examined	Total Passed	Percent Passed
Combined National Board Dental Exam (Parts 1 & 2)	212	200	94.34%
DDS WREB Clinical Licensure Exam	102	100	98.04%
National Board Dental Hygiene Exam	31	31	100.00%
Dental Hygiene WREB Clinical Licensure	31	31	100.00%

2020-2021 Texas State Board of Nursing Examiners Results

Note: Official 2021-2022 pass rates were not available as of press time

	Total Examined	Total Passed	Percent Passed
NCLEX - RN	390	347	88.97%

2021-2022 United States Medical Licensing Examination (USMLE) Results

	Total Examined	Total Passed	Percent Passed
USMLE Step 1 ¹	275	274	99.64%
USMLE Step 2	272	270	99.26%

¹ Interim Report on Performance of Examinees Taking Step 1 for the first time in 2022 through September 29.

2022 American Board of Genetic Counseling Exam Results

	Total Examined	Total Passed	Percent Passed
ABGC (February 2022)	3	3	100.00%
ABGC (August 2022)	7	8	87.50%

Degrees Conferred by School FY 2015 - 2022

source: Robert Jenkins and Tera Wright, Office of the Registrar
CBM009 Certified Graduation Report to the Texas Higher Education Coordinating Board, October 2022

¹beginning in 2015, only Dental Hygiene Certificates are recorded as Certificates. Post Graduate Certificates (PGCRT) are now recorded separately.

²in all degree tables, Dental Post Graduate Certificates (PGCRT) totals include Advanced Education-General Dentistry (AEGD) and General Practice Residency (GPR) programs that are not reported to the Coordinating Board.

	FY 2015	FY 2016	FY 2017	FY 2018	FY 2019	FY 2020	FY 2021	FY 2022
School of Biomedical Informatics								
Master's	28	40	48	59	48	44	52	66
Doctoral	2	3	4	6	3	2	2	7
Total SBMI	30	43	52	65	51	46	54	73
School of Dentistry								
Bachelor's	33	34	36	36	35	39	41	26
Certificate	4	5	3	4	2	0	0	6
Master's	26	28	21	25	29	27	25	28
Post Graduate Certificate (PGCRT) ¹	43	35	39	37	45	41	33	35
Professional	83	100	99	95	95	103	96	108
Total SOD	189	202	198	197	206	210	195	203
Graduate School of Biomedical Sciences								
Master's	29	20	19	21	29	24	38	29
Doctoral	76	63	77	64	48	40	63	51
Total GSBS	105	83	96	85	77	64	101	80
McGovern Medical School								
Master's	3	4	0	12	0	6	11	1
Professional	222	239	231	222	243	242	238	231
Total MS	225	243	231	234	243	248	249	232
Cizik School of Nursing								
Bachelor's	379	386	402	437	462	428	426	396
Master's	113	130	123	269	294	270	248	199
Doctoral	39	26	45	37	76	60	48	71
Total CSON	531	542	570	743	832	758	722	666
School of Public Health								
Master's	269	320	314	342	300	346	357	409
Doctoral	61	63	68	60	57	78	64	69
Total SPH	330	383	382	402	357	424	421	478
UTHealth Houston								
Bachelor's	412	420	438	473	497	467	467	422
Certificate	4	5	3	4	2	0	0	6
Master's	468	542	525	728	700	717	731	732
Doctoral	178	155	194	167	184	180	177	198
Post Graduate Certificate (PGCRT)	43	35	39	37	45	41	33	35
Professional	305	339	330	317	338	345	334	339
Grand Total	1,410	1,496	1,529	1,726	1,766	1,750	1,742	1,732

This page is intentionally blank

Degrees Conferred by Academic Program FY 2022

source: Robert Jenkins and Tera Wright, Office of the Registrar
CBM009 Certified Graduation Report to the Texas Higher Education Coordinating Board, October 2022

Degrees Conferred Fall 2021 Spring 2022, Summer 2022

School of Biomedical Informatics		Graduate School of Biomedical Sciences, cont'd		McGovern Medical School	
MS in Biomedical Informatics	66	Human & Molecular Genetics	0	Doctor of Medicine (MD)	231
PhD in Biomedical Informatics	6	Quantitative Sciences	0	MS in Clinical Research	1
Doctorate of Health Informatics (DHI)	1	Biostatistics, Bioinformatics & Systems Biology	0		
		Microbiology & Infectious Diseases	0	Cizik School of Nursing	
School of Dentistry		Microbiology & Molecular Genetics	0	Bachelor of Science in Nursing (BSN)	396
Doctor of Dental Surgery (DDS)	108	Therapeutics & Pharmacology	1	<u>Master of Science in Nursing (MSN)</u>	
<u>Master of Science in Dentistry (MSD)</u>		Immunology	0	Nurse Practitioner	
Pediatric Dentistry	7	Neuroscience	0	Adult/Gerontology Acute Care	29
Orthodontics	7	<u>Specialized Master of Science (SMS)</u>		Adult/Gerontology Primary Care	13
Endodontics	5	Genetic Counseling	10	Family Nurse Practitioner	119
Prosthodontics	4	Medical Physics	2	Psychiatric Mental Health	24
Periodontics	5	<u>Doctor of Philosophy (PhD)</u>		Nursing Education	0
<u>Dental Postgraduate Certificate</u>		Biomedical Sciences	0	Nursing Leadership & Administration	14
Advanced Education in General Dentistry (AEGD)	0	Medical Physics	3	<u>Doctor in Nursing Practice (DNP)</u>	67
General Practice Residency (GPR)	0	Biochemistry & Cell Biology	9	Nurse Anesthetist (BSN-DNP)	
Endodontics	5	Biochemistry & Molecular Biology	0	Doctor of Philosophy in Nursing (PhD)	4
Oral and Maxillofacial Surgery	6	Cell & Regulatory Biology	0		
Orthodontics	8	Cancer Biology (26.0911.00)	11		
Pediatric Dentistry	8	Clinical & Translational Sciences	0		
Periodontics	4	Therapeutics & Pharmacology	2		
Prosthodontics	4	Genetics & Epigenetics	3		
Bachelor of Science Dental Hygiene (BDH)	26	Genes & Development	1		
Certificate in Dental Hygiene	6	Epigenetics & Molecular Carcinogenesis	0		
		Human & Molecular Genetics	1		
Graduate School of Biomedical Sciences		Immunology	3		
<u>Master of Science (MS)</u>		Microbiology & Infectious Diseases	1		
Biomedical Sciences	16	Microbiology & Molecular Genetics	2		
Biochemistry and Cell Biology	0	Neuroscience	6		
Biochemistry and Molecular Biology	0	Quantitative Sciences	7		
Cell and Regulatory Biology	0	Biostatistics, Bioinformatics & Systems Biology	2		
Cancer Biology	0				
Clinical & Translational Sciences	0				
Genetics & Epigenetics	0				
Genes & Development	0				
Epigenetics & Molecular Carcinogenesis	0				

continued **Degrees Conferred by Academic Program FY 2022**

Degrees Conferred Fall 2021, Spring 2022, Summer 2022

School of Public Health

<u>Master of Public Health (MPH)</u>		<u>Doctor of Public Health (DrPH)</u>	
<i>Austin</i>		<i>Austin</i>	
Epidemiology	27	Health Promotion/Health Education	1
Health Promotion/Health Education	10	<i>Brownsville</i>	
Public Health	21	Health Promotion/Health Education	1
<i>Brownsville</i>		<i>Dallas</i>	
Epidemiology	4	Health Promotion/Health Education	0
Health Promotion/Health Education	5	<i>El Paso</i>	
Public Health	0	Health Promotion/Health Education	0
<i>Dallas</i>		<i>San Antonio</i>	
Epidemiology	18	Community Health Practice	0
Health Promotion/Health Education	0	<i>Houston</i>	
Public Health	18	Community Health Practice	7
<i>El Paso</i>		Health Promotion/Health Education	
Environmental Health	0	Health Services Organizations	1
Health Promotion/Health Education	0	Environmental Sciences	0
Public Health	3	<u>Doctor of Philosophy (PhD)</u>	
Public Health (MD/MPH El Paso)	5	<i>Austin</i>	
<i>San Antonio</i>		Behavioral Sciences & Health Promotion	
Accelerated	0	Epidemiology	3
Environmental Health	0	<i>Brownsville</i>	
Epidemiology	21	Epidemiology	1
Health Promotion/Health Education	0	<i>Dallas</i>	
Public Health	27	Behavioral Sciences & Health Promotion	0
<i>Houston</i>		Epidemiology	3
Biostatistics	5	<i>El Paso</i>	
Community Health Practice	16	Environmental Sciences	
Environmental Health	14	Total Worker Health	0
Epidemiology	75	Environmental Disease Prevention	1
Health Promotion/Health Education	49	<i>San Antonio</i>	
Health Services Organization	7	Environmental Sciences	
Healthcare Management	42	Total Worker Health	0
Public Health	28	Environmental Disease Prevention	0
<u>Master of Science (MS)</u>		Epidemiology	2
<i>Austin</i>		<i>Houston</i>	
Epidemiology	0	Behavioral Sciences & Health Promotion	4
<i>Brownsville</i>		Biostatistics	11
Epidemiology	0	Environmental Sciences	
<i>Dallas</i>		Total Worker Health	0
Epidemiology	0	Environmental Disease Prevention	0
<i>San Antonio</i>		Epidemiology	14
Epidemiology	0	Management & Policy Studies	16
<i>Houston</i>		Grand Total UTHealth Houston	1,732
Biostatistics	13		
Epidemiology	1		
Environmental Sciences	0		

Degrees Conferred by Level & Ethnicity FY 2022

source: Robert Jenkins and Tera Wright, Office of the Registrar
CBM009 Certified Graduation Report to the Texas Higher Education Coordinating Board, October 2022

	Race/Ethnicity									Grand Total
	American Indian	Asian	Black	Hispanic	Internat'l	Multi-Racial	Pacific Islander	Unidentified	White	
School of Biomedical Informatics										
MS	0	16	5	8	7	3	0	10	17	66
PhD	0	0	0	0	5	0	0	1	1	7
Total SBMI	0	16	5	8	12	3	0	11	18	73
School of Dentistry										
BS	0	5	2	6	1	2	1	1	8	26
UG Certificate	0	2	0	3	0	0	0	0	1	6
DDS	0	36	4	17	0	4	0	7	40	108
MS	0	4	2	4	3	2	0	1	12	28
PGCRT	0	6	3	5	4	2	0	1	14	35
Total SOD	0	53	11	35	8	10	1	10	75	203
Graduate School of Biomedical Sciences										
MS	0	4	1	2	3	1	0	1	17	29
PhD	1	3	2	3	14	1	0	7	20	51
Total GSBS	1	7	3	5	17	2	0	8	37	80
McGovern Medical School										
MS	0	0	0	0	0	0	0	0	1	1
MD	0	61	13	33	0	10	0	14	100	231
Total MMS	0	61	13	33	0	10	0	14	101	232
Cizik School of Nursing										
BSN	0	113	46	104	9	14	1	4	105	396
MSN	0	39	34	46	3	3	0	4	70	199
DNP	0	8	19	9	0	2	0	0	29	67
PhD	0	0	1	2	0	0	0	0	1	4
Total SON	0	160	100	161	12	19	1	8	205	666
School of Public Health										
MPH	1	85	50	95	22	14	0	18	109	394
MS	0	8	0	0	3	1	0	1	2	15
DrPH	0	1	1	2	2	0	0	2	5	13
PhD	0	11	6	7	14	0	0	7	11	56
Total SPH	1	105	57	104	41	15	0	28	127	478
Grand Total	2	402	189	346	90	59	2	79	563	1,732

Profile of Medical Residents in ACGME Accredited Programs *September 2022*

source: April Bass, McGovern Medical School

¹ Aggregate reporting requirements for ACGME differ from federal aggregate postsecondary reporting requirements. Hispanic/Latino ethnicity is included in the race categories listed below. In this Profile of Medical Residents, 163 of the 1,163 medical residents reported a Hispanic/Latino ethnicity

Specialty	Male	Female	White	Black	Pacific Islander	Asian	American Indian	Multi-Racial	Other	Total
Adolescent Medicine	0	1	0	0	0	1	0	0	0	1
Adult Cardiothoracic Anesthesiology	4	0	3	0	0	1	0	0	0	4
Adult Reconstructive Orthopaedics	3	0	2	0	0	0	0	1	0	3
Anesthesiology	57	51	48	11	0	40	0	7	2	108
Blood Banking/Transfusion Medicine	1	0	0	0	0	1	0	0	0	1
Brain Injury Medicine	1	0	1	0	0	0	0	0	0	1
Cardiovascular Disease	27	6	13	0	0	18	0	2	0	33
Child & Adolescent Psychiatry	5	7	6	1	0	4	0	1	0	12
Child Abuse Pediatrics	0	2	1	0	0	1	0	0	0	2
Child Neurology	2	7	4	0	0	4	1	0	0	9
Clinical Cardiac Electrophysiology	5	0	3	0	0	2	0	0	0	5
Clinical Neurophysiology	1	2	0	0	0	3	0	0	0	3
Colon and Rectal Surgery	4	0	3	0	0	1	0	0	0	4
Combined Adult & Pediatric Nephrology	0	1	0	0	0	0	1	0	0	1
Critical Care Anesthesia	2	2	1	1	0	2	0	0	0	4
Dermatology	5	15	13	1	0	6	0	0	0	20
Dermatopathology	1	0	0	0	0	0	1	0	0	1
Diagnostic Radiology	25	20	23	3	0	15	0	3	1	45
Emergency Medical Services	1	1	0	1	0	1	0	0	0	2
Emergency Medicine	26	34	34	11	0	13	0	2	0	60
Endocrinology, Diabetes & Metabolism	2	3	3	0	0	2	0	0	0	5
Epilepsy	4	0	1	1	0	2	0	0	0	4
Family Practice	20	16	11	4	0	19	0	2	0	36
Gastroenterology	4	8	1	1	0	10	0	0	0	12
General Surgery	35	24	41	4	0	12	0	2	0	59
Geriatric Medicine (IMG)	2	1	1	1	0	1	0	0	0	3
Hematology and Medical Oncology	2	4	1	0	0	5	0	0	0	6
Hospice & Palliative Medicine	5	0	3	0	0	2	0	0	0	5
Infectious Diseases	6	5	7	0	0	2	0	2	0	11
Internal Medicine	85	57	59	8	0	72	0	3	0	142
Internal Medicine/Pediatrics	20	12	16	2	0	14	0	0	0	32
Interventional Cardiology	3	0	2	0	0	1	0	0	0	3
Interventional Radiology - Integrated	12	2	10	0	0	4	0	0	0	14
Maternal Fetal Medicine	2	10	10	0	0	2	0	0	0	12
Neonatal Perinatal Medicine	2	7	7	0	0	2	0	0	0	9
Nephrology	5	6	3	0	0	8	0	0	0	11
Neurological Surgery	17	4	15	0	0	5	0	1	0	21
Neurology	20	20	19	2	0	18	0	1	0	40
Neuroradiology	2	1	0	0	0	3	0	0	0	3
Obstetrics & Gynecology	6	42	23	12	0	11	1	1	0	48
Occupational Medicine	4	0	3	0	0	1	0	0	0	4
Ophthalmology	8	5	4	0	0	9	0	0	0	13
Orthopaedic Sports Medicine	3	1	4	0	0	0	0	0	0	4
Orthopaedic Surgery	23	7	22	1	0	5	1	1	0	30
Otolaryngology	9	5	10	0	0	3	0	1	0	14
Pathology	12	15	16	1	0	9	0	1	0	27
Pediatric Anesthesiology	0	1	1	0	0	0	0	0	0	1
Pediatric Cardiology	5	5	7	1	0	2	0	0	0	10
Pediatric Critical Care Medicine	7	5	7	1	0	4	0	0	0	12
Pediatric Emergency Medicine	2	2	3	0	0	0	1	0	0	4
Pediatric Endocrinology	0	3	2	0	0	1	0	0	0	3
Pediatric Gastroenterology	1	5	2	0	0	4	0	0	0	6
Pediatric Infectious Diseases	1	3	3	0	0	0	0	1	0	4
Pediatric Pulmonology	0	2	2	0	0	0	0	0	0	2
Pediatric Surgery	0	2	2	0	0	0	0	0	0	2
Pediatrics	22	60	38	7	0	32	1	4	0	82
Pediatrics/Medical Genetics and Genomics	2	2	4	0	0	0	0	0	0	4
Physical Medicine & Rehabilitation	8	8	10	1	0	5	0	0	0	16
Plastic & Reconstructive Surgery	4	2	3	1	0	2	0	0	0	6
Plastic Surgery - Integrated	4	1	4	0	0	1	0	0	0	5
Psychiatry	22	31	33	1	0	17	0	2	0	53
Pulmonary Disease & Critical Care Medicine	13	12	6	2	0	17	0	0	0	25
Rheumatology	3	3	2	0	0	4	0	0	0	6
Sleep Medicine	2	0	1	1	0	0	0	0	0	2
Sports Medicine (FP)	2	0	1	0	0	0	0	1	0	2
Surgical Critical Care	2	1	3	0	0	0	0	0	0	3
Urology	10	5	10	0	0	5	0	0	0	15
Vascular Neurology	4	3	5	0	0	2	0	0	0	7
Vascular Surgery	1	0	1	0	0	0	0	0	0	1
Vascular Surgery - Integrated	3	2	3	0	0	1	0	1	0	5
Grand Total UTHealth Houston	601	562	600	81	0	432	7	40	3	1,163

McGovern Medical School Graduating Class Specialty Choices *May 2022*

source: Dana McDowelle, PhD, McGovern Medical School

Note: Of the 228 graduating seniors who participated in the National Residency Match Program (NRMP), 142 (62%) will stay in Texas for their first year of postgraduate training, and 563 (28%) matched to McGovern Medical School programs. Gray shading represents Primary Care fields, of which 102 members (45%) of the 228 graduates selected.

Specialty	Number	Percentage
Internal Medicine	48	21%
Pediatrics	17	7%
Emergency Medicine	13	6%
Family Medicine	12	5%
Anesthesiology	20	9%
Psychiatry	18	8%
Orthopaedic Surgery	8	4%
Ophthalmology	6	3%
Surgery (General)	12	5%
Obstetrics/Gynecology	20	9%
Physical Med & Rehab	3	1%
Diagnostic Radiology	6	3%
Surgery (Preliminary)	7	3%
Deferred	4	2%
Otolaryngology	3	1%
Urology	1	0%
Dermatology	5	2%
Internal Medicine (Preliminary)	1	0%
Neurology	4	2%
Oralmaxillofacial Surgery	3	1%
Neurological Surgery	1	0%
Internal Medicine/Pediatrics	3	1%
Interventional Radiology	1	0%
Pediatric Neurology	2	1%
Plastic Surgery	3	1%
Vascular Surgery	2	1%
Pathology	0	0%
Radiation Oncology	2	1%
Transitional Year	3	1%
Grand Total	228	

School of Dentistry Residents & Postgraduate Students *Fall 2022*

source: Robert Spears, PhD, School of Dentistry

Specialty	Total	M	F	Amer Indian	Asian	Black	Hispanic	Multi- Racial	Un- identified	White
Endodontics	10	5	5	0	4	0	3	0	0	3
General Dentistry (GPR)	7	2	5	0	2	0	1	0	0	4
General Dentistry (AEGD)	7	3	4	0	3	0	2	0	1	1
Oral & Maxillofacial Surgery	30	24	6	0	5	1	2	0	1	21
Orthodontics & Dentofacial Orthopedics	14	6	8	0	3	1	3	0	0	7
Pediatric Dentistry	16	4	12	0	7	1	1	0	1	6
Periodontics	12	4	8	0	8	0	1	0	0	3
Prosthodontics	17	4	13	0	7	1	3	0	0	6
Grand Total SOD	113	52	61	0	39	4	16	0	3	51

Three types of students comprise the UTHealth Houston School of Dentistry's Advanced Education Programs: postgraduate, graduate, and resident.

- A postgraduate student is a dentist registering and paying tuition and fees for courses leading to a certificate in the specialty area.
- A graduate student is a dentist registering and paying tuition and fees for courses leading to a Master of Science in Dentistry degree and a certificate in a dental specialty area.
- A resident is a dentist who receives training in a specialty area, is paid a stipend, and who receives a certificate of completion.
- Residencies are available only in oral and maxillofacial surgery.

Medical (MCAT) and Dental (DAT) Applicant Scores *Fall 2022 Entering Class*

sources: Robert Spears, PhD, School of Dentistry; Dana McDowelle, PhD, McGovern Medical School

Applicant Average Medical College Admission Test (MCAT) Scores Fall 2022 Entering Class

Subject	All Applicants	Enrolled Applicants
Biological and Biochemical Foundations of Living Systems	126.9	128.1
Chemical and Physical Foundations of Biological Systems	126.7	128.0
Critical Analysis and Reasoning Skills	126.0	126.9
Psychological, Social, and Biological Foundations of Behavior	127.7	128.9
Applicant Total Score	507.4	512.0
Applicant Average Overall GPA	3.60	3.86

Applicant Average Dental Aptitude Test (DAT) Scores Fall 2022 Entering Class

Subject	All Applicants	Enrolled Applicants
Academic Average AA	19.7	22.1
Perception Ability MA	19.8	21
Quantitative Reasoning	19.1	21.1
Reading Comprehension	21.1	22
Biology	19	21.5
Inorganic Chemistry	19.8	22.8
Organic Chemistry	19.5	22.8
Total Science	19.65	21.90
Applicant Average Overall GPA	3.52	3.83

Tuition & Fees *Fall 2022 & Spring 2023*

source: Sue Thomey, Bursar's Office

Notes:

- Fee totals do not represent the full cost of education; additional fees may be assessed depending upon program year and courses taken.
- Online courses may charge an additional alternative instruction fee.
- All students pay a mandatory graduation fee (\$100) when applicable.
- An Archer Program Fee (\$3,900) is charged to all students accepted to the Archer fellowship program in Washington DC.
- For full fee detail, please go to the Bursar's Office website at <https://inside.uth.edu/finance/bursars/student/tuition-and-fees.htm>

Level	Resident	Non-Resident
Undergraduate - Nursing		
Tuition (30 semester credit hours)	\$8,190.00	\$32,970.00
Fees	1,644.06	1,644.06
Total Undergraduate (BSN)	\$9,834.06	\$34,614.06
Undergraduate - Dental Hygiene		
Tuition (30 semester credit hours)	\$5,280.00	\$17,520.00
Fees	2,963.06	3,408.06
Total Undergraduate (BDH)	\$8,243.06	\$20,928.06
Graduate - Biomedical Informatics		
Tuition (24 semester credit hours)	\$6,240.00	\$20,832.00
Fees	2,253.06	2,253.06
Total Graduate - SBMI	\$8,493.06	\$23,085.06
Graduate - Biomedical Sciences		
Tuition (24 semester credit hours)	\$5,952.00	\$15,744.00
Fees	278.06	278.06
Total Graduate - GSBS	\$6,230.06	\$16,022.06
Graduate - Clinical Research		
Tuition (24 semester credit hours)	\$2,304.00	\$12,096.00
Fees	272.81	272.81
Total Graduate - MSCR	\$2,576.81	\$12,368.81
Graduate Dental Hygiene		
Tuition (24 semester credit hours)	\$7,152.00	\$26,736.00
Fees	1,073.06	1,518.06
Total Graduate - MSDH	\$8,225.06	\$28,254.06
Graduate - Dental Advanced Ed		
Tuition (24 semester credit hours)	\$4,608.00	\$19,248.00
Fees	6,474.48	6,474.48
Total Graduate - Dental Adv Ed	\$11,082.48	\$25,722.48
Graduate - Nursing		
Tuition (24 semester credit hours)	\$8,568.00	\$27,720.00
Fees	1,176.06	1,176.06
Total Graduate - CSON	\$9,744.06	\$28,896.06
Graduate - Public Health		
Tuition (24 semester credit hours)	\$6,888.00	\$25,512.00
Fees	7,085.06	7,085.06
Total Graduate - SPH	\$13,973.06	\$32,597.06
Professional - Medical (MD)		
Tuition	\$19,521.00	\$26,125.00
Fees	5,105.75	5,105.75
Total Professional - MD	\$24,626.75	\$31,230.75
Professional - Dental (DDS)		
Tuition	\$34,527.00	\$54,534.00
Fees	7,146.75	7,146.75
Total Professional - DDS	\$41,673.75	\$61,680.75

Student Financial Aid Profile FY 2015 - 2022

source: Heather Beckles-Bright and James Fore, Office of Student Financial Services

	2015	2016	2017	2018	2019	2020	2021	2022
Federal Grant Awards								
FPLP – Perkins ^a	\$0	\$0	\$0	\$0	\$0	\$0	\$0	\$0
HPSLP – Dental	0	18,520	0	0	0	0	0	0
HPSLP – Medical	0	0	0	0	0	0	0	0
Nursing SLP – undergraduate	0	0	0	0	0	0	0	0
Nursing SLP – graduate	0	0	0	0	0	0	0	0
NFLP	25,757	28,242	5,000	0	0	0	0	0
LDS – Dental	0	0	6,507	0	0	0	0	0
LDS – Medical	0	0	0	0	0	0	0	0
Federal Grant Total	\$25,757	\$46,762	\$11,507	\$0	\$0	\$0	\$0	\$0
Institutional Matching								
FPLP – Perkins ^a	\$0	\$0	\$0	\$0	\$0	\$0	\$0	\$0
HPSLP – Dental	0	2,058	0	0	0	0	0	0
HPSLP – Medical	0	0	0	0	0	0	0	0
Nursing SLP – undergraduate	0	0	0	0	0	0	0	0
Nursing SLP – graduate	0	0	0	0	0	0	0	0
NFLP	2,862	3,138	556	0	0	0	0	0
LDS – Dental	0	0	723	0	0	0	0	0
LDS – Medical	0	0	0	0	0	0	0	0
Institutional Matching Total	\$2,862	\$5,196	\$1,279	\$0	\$0	\$0	\$0	\$0
Collections^b								
FPLP – Perkins ^a	\$847,783	\$761,850	\$654,783	\$649,450	\$573,721	\$470,738	\$442,904	\$219,600
HPSLP – Dental	439,707	874,297	544,471	794,322	655,400	589,602	932,039	668,933
HPSLP – Medical	20,502	15,289	8,045	4,668	7,709	21,300	436	CLOSED
Nursing SLP - UG	244	4,083	199	232	1,668	448	190	CLOSED
Nursing SLP – GR	20,618	16,993	11,730	27,194	16,705	20,577	18,391	13,733
LDS - Dental ^d	36,069	94,663	87,347	92,774	63,184	33,466	130,228	45,844
LDS - Medical ^d	165,798	163,342	186,330	209,738	179,216	113,993	108,222	77,909
NFLP ^d	18,959	23,394	49,745	38,328	19,804	24,113	6,339	8,086
Collections Total	\$1,549,680	\$1,953,911	\$1,542,650	\$1,816,706	\$1,517,407	\$1,274,237	\$1,638,749	\$1,034,105
Total Available in Federal Loan Funds	\$1,578,299	\$2,005,869	\$1,555,436	\$1,816,706	\$1,517,407	\$1,274,237	\$1,638,749	\$1,034,105
Default Rates^c								
FPLP – Perkins ^a	0.88%	0.00%	2.99%	0.00%	4.23%	0.67%	0.00%	0.00%
HPSLP – Dental	0.52%	0.49%	0.61%	0.44%	0.42%	0.40%	0.35%	0.34%
HPSLP – Medical	0.40%	0.16%	0.16%	0.16%	0.16%	0.16%	0.41%	CLOSED
Nursing SLP – undergraduate	2.85%	2.84%	2.62%	2.62%	2.50%	2.50%	1.28%	CLOSED
Nursing SLP – graduate	1.95%	0.92%	0.82%	0.77%	1.79%	0.68%	0.66%	0.65%
LDS - Dental	0.45%	0.40%	0.24%	0.02%	0.00%	0.00%	0.00%	0.00%
LDS - Medical	2.97%	2.38%	1.86%	1.70%	0.48%	0.43%	0.43%	0.37%
NFLP ^d	2.39%	9.83%	3.03%	7.05%	0.00%	0.00%	0.00%	0.00%

Legend of Award abbreviations

FPLP – Federal Perkins Loan Program
 HPSLP - Health Professions Student Loan Program
 LDS – Loans for Disadvantaged Students
 SLP – Student Loan Program
 UG - Undergraduate
 GR - Graduate
 NFLP – Nursing Faculty Loan Program

^a On June 30, 1993, the Department of Education initiated a new default rate calculation for the Perkins Loan Program. The new default rate calculation, called the Cohort Default Rate, looks at borrowers entering repayment in a specific one year period. As of June 30, 2022, the Cohort Default Rate for the Perkins Loan Program was 0.00%, for the year ending June 30, 2022

^b Principal, interest, investment income and late fees.

^c As of June 30, 2022 overall default rates.

Total Student Financial Aid Awards by School *FY 2012 - 2022*

source: Heather Beckles-Bright and James Fore, Office of Student Financial Services

	2012		2013		2014	
	#	Award	#	Award	#	Award
School of Biomedical Informatics	25	\$457,128	39	\$623,748	55	\$419,406
School of Dentistry	395	15,799,388	405	15,110,257	393	15,392,622
Graduate School of Biomedical Sciences	134	2,005,976	109	1,703,816	100	1,208,947
McGovern Medical School	784	29,223,254	734	28,400,524	702	24,272,613
Cizik School of Nursing	669	11,003,580	753	13,873,569	841	13,003,621
School of Public Health	596	11,212,787	461	9,280,482	462	6,426,508
Grand Total UTHealth Houston	2,603	\$69,702,113	2,501	\$68,992,396	2,553	\$60,723,717

	2015		2016		2017	
	#	Award	#	Award	#	Award
School of Biomedical Informatics	66	\$805,290	71	\$694,693	59	\$524,437
School of Dentistry	395	15,915,038	424	18,436,165	443	19,471,306
Graduate School of Biomedical Sciences	95	1,084,073	90	903,085	112	1,039,511
McGovern Medical School	657	24,144,860	684	25,229,960	693	25,465,068
Cizik School of Nursing	848	13,108,331	920	15,630,981	1,076	18,464,162
School of Public Health	496	6,770,923	492	6,872,444	524	7,954,023
Grand Total UTHealth Houston	2,557	\$61,828,515	2,681	\$67,767,328	2,907	\$72,918,507

	2018		2019		2020	
	#	Award	#	Award	#	Award
School of Biomedical Informatics	56	\$738,929	60	\$545,581	95	\$663,108
School of Dentistry	429	19,629,668	452	19,400,039	450	20,357,541
Graduate School of Biomedical Sciences	104	1,165,567	113	1,203,719	107	1,214,069
McGovern Medical School	711	25,902,186	716	25,777,789	705	26,965,232
Cizik School of Nursing	1,206	23,244,493	1,162	19,663,677	1,104	17,586,776
School of Public Health	555	9,396,458	531	7,979,697	572	8,284,980
Grand Total UTHealth Houston	3,061	\$80,077,301	3,034	\$74,570,502	3,033	\$75,071,706

	2021		2022	
	#	Award	#	Award
School of Biomedical Informatics	125	\$1,308,999	129	\$1,525,505
School of Dentistry	445	21,276,805	446	22,520,750
Graduate School of Biomedical Sciences	136	1,101,457	122	1,223,273
McGovern Medical School	705	27,686,813	691	27,146,787
Cizik School of Nursing	1,108	17,646,392	1,034	17,846,564
School of Public Health	740	11,195,522	824	12,800,478
Grand Total UTHealth Houston	3,259	\$80,215,988	3,246	\$83,063,357

Total Student Financial Aid Awards by Major Program *FY 2013 - 2022*

source: Heather Beckles-Bright and James Fore, Office of Student Financial Services

¹ Due to a Student Information System change, if a student accepts a lesser award amount than the original maximum award offered, the offer amount is automatically superseded by the lower accepted amount. In previous years, the original maximum award offered was reported. As a result, the Direct Loan award amounts beginning in the 2013-14 academic year are significantly lower than those reported in previous years.

	2013	2014	2015	2016	2017
LDS – Dental	\$60,000	\$73,608	\$50,000	\$40,000	\$54,000
LDS – Medical	107,307	47,532	131,896	118,126	295,060
FPLP – Perkins	848,250	657,299	594,000	517,687	580,913
HPSLP – Dental	802,782	949,719	489,747	420,000	885,432
HPSLP – Medical	0	0	0	0	0
Nursing SLP – Undergraduate	0	0	0	0	0
Nursing SLP – Graduate	6,000	0	3,000	16,500	49,500
Nurse Faculty Loan Program	79,173	61,711	47,685	52,129	7,309
Health Education Loan Program	0	0	0	0	0
Direct Loans – Subsidized ¹	5,762,589	2,621,502	2,603,964	2,480,313	2,515,068
Direct Loans - Unsubsidized ¹	51,602,107	45,351,965	46,868,563	48,893,411	51,500,925
Institutional and other loans and scholarships	9,724,188	10,960,381	11,039,660	15,229,162	17,030,300
Grand Total UTHealth Houston	\$68,992,396	\$60,723,717	\$61,828,515	\$67,767,328	\$72,918,507

	2018	2019	2020	2021	2022
LDS – Dental	\$80,000	\$52,000	\$91,000	\$98,485	\$75,000
LDS – Medical	196,850	114,423	135,000	254,063	150,000
FPLP – Perkins	183,230	0	0	0	
HPSLP – Dental	829,544	429,000	559,000	670,833	753,000
HPSLP – Medical	0	0			
Nursing SLP – Undergraduate	0	0			
Nursing SLP – Graduate	92,500	33,000	9,000	16,500	16,500
Nurse Faculty Loan Program	0	8,182	12,260	20,837	10,929
Health Education Loan Program	0	0			
Direct Loans - Subsidized ¹	2,636,156	2,445,241	2,259,726	2,310,879	2,476,029
Direct Loans - Unsubsidized ¹	54,026,973	52,881,783	51,759,890	55,289,319	55,839,586
Institutional and other loans and scholarships	22,032,048	18,606,873	20,245,830	21,555,072	23,742,313
Grand Total UTHealth Houston	\$80,077,301	\$74,570,502	\$75,071,706	\$80,215,988	\$83,063,357

Average Student Financial Aid Awards by School FY 2013 - 2022

source: Heather Beckles-Bright and James Fore, Office of Student Financial Services Note: this is the average of those students receiving aid.

	2013	2014	2015	2016	2017
School of Biomedical Informatics	\$15,994	\$7,626	\$12,201	\$9,784	\$8,889
School of Dentistry	37,309	39,167	40,291	43,482	43,953
Graduate School of Biomedical Sciences	15,631	12,089	11,411	10,034	9,281
McGovern Medical School	38,693	34,576	36,750	36,886	36,746
Cizik School of Nursing	18,424	15,462	15,458	16,990	17,160
School of Public Health	20,131	13,910	13,651	13,968	15,179
Combined Average	\$27,586	\$23,785	\$24,180	\$25,277	\$25,084

	2018	2019	2020	2021	2022
School of Biomedical Informatics	\$13,195	\$9,093	\$6,980	\$10,742	\$11,826
School of Dentistry	45,757	42,920	45,239	47,813	50,495
Graduate School of Biomedical Sciences	11,207	10,652	11,346	8,099	10,027
McGovern Medical School	36,431	36,002	38,249	39,272	39,286
Cizik School of Nursing	19,274	16,922	15,930	15,926	17,260
School of Public Health	16,931	15,028	14,484	15,129	15,535
Combined Average	\$26,161	\$24,578	\$24,752	\$24,614	\$25,589

Average Student Debt on Graduation *FY 2015 - 2022*

source: Heather Beckles-Bright and James Fore, Office of Student Financial Services

Note: this is the average of those students receiving aid.

	2015	2016	2017	2018
School of Biomedical Informatics	\$46,669	\$34,151	\$37,746	\$30,998
School of Dentistry (DDS)	151,335	157,066	158,561	157,620
School of Dentistry - Dental Hygiene	26,950	32,678	29,889	30,677
School of Dentistry - Dental Post Grad	62,539	59,801	52,533	64,871
Graduate School of Biomedical Sciences	48,156	37,589	38,402	38,463
McGovern Medical School (MD)	117,381	115,372	130,099	133,826
McGovern Medical School - Clinical Research	-	-	-	-
Cizik School of Nursing - Undergraduate	20,060	22,232	20,972	21,648
Cizik School of Nursing - Graduate	43,245	38,123	48,364	40,108
School of Public Health	37,950	34,608	36,920	39,624
	2019	2020	2021	2022
School of Biomedical Informatics	\$40,135	\$27,573	\$23,828	\$37,300
School of Dentistry (DDS)	161,743	175,483	163,685	190,526
School of Dentistry - Dental Hygiene	27,745	27,585	24,129	17,562
School of Dentistry - Dental Post Grad	82,473	58,064	70,538	111,477
Graduate School of Biomedical Sciences	32,833	37,303	42,649	58,167
McGovern Medical School (MD)	125,180	138,972	138,174	123,404
McGovern Medical School - Clinical Research	-	-	-	-
Cizik School of Nursing - Undergraduate	19,542	19,426	18,397	23,238
Cizik School of Nursing - Graduate	47,572	43,868	41,382	64,162
School of Public Health	40,809	36,029	38,914	41,053

Total Graduates by School

source: Robert Jenkins and Tera Wright, Office of the Registrar

School of Biomedical Informatics <i>2010 - present</i>	534
School of Dentistry <i>1943 – present</i>	12,381
Graduate School of Biomedical Sciences <i>1963 - present</i>	3,222
McGovern Medical School <i>1970 - present</i>	8,859
Cizik School of Nursing <i>1972 - present</i>	15,000
School of Public Health <i>1967 - present</i>	10,144
School of Allied Health Sciences <i>1973 - 1996</i>	2,019
School of Health Information Sciences <i>1998 – 2009</i>	134
Grand Total UHealth Houston (all degrees, all years)	52,293

This page is intentionally blank

Research

Research Expenditures by Unit	43
UT Health-Related Institutions Research Expenditures by Source	44
Trends in UT Health-Related Institutions Research Expenditures	44
Research Expenditures by Sponsoring Agency	45
Intellectual Property Activity	46
Grant Proposals by Unit & Type	47
Contract & Grant Awards by Unit & Type	48
Contract & Grant Awards by Source	50
NIH Awards by Unit	52
Federal Awards by Agency	53
Principal Investigators by Unit	53
Sponsored Project Activity Report	54

Research Expenditures by Unit *FY 2013 - 2022*

source: Scott Barnett, Accounting & Budget

Includes operating expenses, indirect cost recoveries and capital purchased.

Note (***pertains to all research tables***):

- Faculty in the Graduate School of Biomedical Sciences hold their primary appointments in another school/institution. As such, their respective research activity is reported in the home department, and not through GSBS. The exception to this is when reporting the research activity of faculty who hold administrative roles at GSBS, such as the school's dean.

	FY 2013	FY 2014	FY 2015	FY 2016	FY 2017
School of Biomedical Informatics	\$8,621,463	\$9,562,077	\$7,494,484	\$8,269,184	\$9,349,754
School of Dentistry	3,541,401	3,128,088	2,901,719	3,484,282	3,989,747
McGovern Medical School	127,687,758	129,939,638	133,821,022	141,450,730	151,326,681
Cizik School of Nursing	471,562	931,134	1,084,594	1,604,983	1,236,005
School of Public Health	50,980,190	48,818,644	48,174,634	45,512,796	43,682,179
Behavioral Sciences Campus	164,028	77,377	99,186	15,763	76,808
Academic Support Area	30,453,165	30,907,267	29,141,911	25,095,777	25,263,412
Grand Total	\$213,298,104	\$213,802,147	\$215,223,066	\$225,433,516	\$234,924,585

	FY 2018	FY 2019	FY 2020	FY 2021	FY 2022
School of Biomedical Informatics	\$12,279,875	\$17,838,961	\$17,981,236	\$20,923,751	\$22,429,100
School of Dentistry	4,691,121	4,810,691	4,239,406	4,086,971	6,019,911
McGovern Medical School	157,876,613	168,447,437	165,979,551	178,848,868	196,739,969
Cizik School of Nursing	988,471	1,892,077	2,472,380	3,342,132	3,839,196
School of Public Health	47,361,787	45,893,450	48,148,749	54,275,844	62,980,320
Behavioral Sciences Campus	11,957	630	77	448	10,131
Academic Support Area	19,356,769	15,913,564	17,324,662	27,570,562	27,870,455
Grand Total	\$242,566,592	\$254,796,810	\$256,146,061	\$289,048,576	\$319,889,083

UT Health-Related Institutions Research Expenditures by Source FY 2021

source: Research Expenditures for Texas Institutions of Higher Education, The Texas Higher Education Coordinating Board.
FY 2021 is the most recent report available on the THECB website as of press time.

Institution	Federal	State & Local Appropriations	State/Local Contracts & Grants	Institution Resources	Private For-Profit	Private Non-Profit	Total
UTHealth Houston	\$165,138,599	\$23,849,523	\$15,626,222	\$27,661,607	\$16,375,127	\$37,177,940	\$285,829,018
UT Health San Antonio	113,672,960	16,182,719	8,926,979	28,116,370	17,840,481	18,597,290	203,336,799
UT Health Tyler	12,007,190	1,639,415	5,245,052	1,302,168	110,769	5,380,763	25,685,357
UT MD Anderson	217,073,480	247,560,773	45,763,927	129,925,449	211,848,698	169,445,250	1,021,617,577
UTMB-Galveston	118,123,367	805,580	6,934,428	15,313,683	8,423,640	11,972,295	161,572,993
UT Southwestern	261,693,498	21,651,403	46,455,138	47,330,243	46,941,495	130,309,695	554,381,472
UT Austin Dell Medical School	11,553,523	1,567,793	2,380,954	10,701,539	6,145,478	4,739,026	37,088,313
UT Rio Grande Valley Medical School	4,575,464	3,992,934	536,514	5,233,349	59,429	8,416,272	22,813,962
Grand Total	\$903,838,081	\$317,250,140	\$131,869,214	\$265,584,408	\$307,745,117	\$386,038,531	\$2,312,325,491

Trends in UT Health-Related Institutions Research Expenditures FY 2017 - 2021

source: Research Expenditures for Texas Institutions of Higher Education, The Texas Higher Education Coordinating Board.
FY 2021 is the most recent report available on the THECB website as of press time.

Institution	2017	2018	2019	2020	2021	% Change 2017-21
UTHealth Houston	\$232,468,158	\$240,030,744	\$252,114,494	\$253,142,796	\$285,829,018	23.0%
UT Health San Antonio	164,473,205	173,522,815	180,665,435	195,215,120	\$203,336,799	23.6%
UT Health Tyler	16,292,355	19,242,529	17,730,519	21,264,915	\$25,685,357	57.7%
UT MD Anderson	839,432,768	857,950,511	895,748,758	967,676,566	\$1,021,617,577	21.7%
UTMB-Galveston	149,786,313	149,290,729	147,683,964	152,611,603	\$161,572,993	7.9%
UT Southwestern	454,855,646	469,504,659	489,417,809	524,109,323	\$554,381,472	21.9%
UT Austin Dell Medical School	3,271,619	27,238,585	34,856,662	35,698,490	\$37,088,313	1033.6%
UT Rio Grande Valley Medical School	12,558,505	10,847,246	19,356,542	22,605,280	\$22,813,962	81.7%
Grand Total	\$1,873,138,569	\$1,947,627,818	\$2,037,574,183	\$2,172,324,093	\$2,312,325,491	23.4%

Research Expenditures by Type of Sponsoring Agency *FY 2022*

source: Scott Barnett, Accounting & Budget

	Grand Total	Federal	State	Local	Private	Other-Appropriated	Other-Designated
School of Biomedical Informatics	\$22,429,100	\$13,484,131	\$3,279,751	\$0	\$896,625	\$1,797	\$4,766,795
School of Dentistry	6,019,911	5,316,159	16,222	0	514,014	95,311	78,205
McGovern Medical School	196,739,970	109,212,737	8,948,352	4,653	45,727,409	15,027,862	17,611,054
Cizik School of Nursing	3,839,196	1,965,716	171,460	0	788,667	666,502	246,851
School of Public Health	62,980,320	45,528,716	5,828,326	106,119	8,993,024	1,827,248	696,887
Behavioral Sciences Campus	10,131	0	0	0	10,131	0	0
Academic Support Area	27,870,455	8,697,543	0	0	0	10,405,568	8,975,245
Grand Total	\$319,889,083	\$184,205,003	\$18,244,112	\$110,772	\$56,929,870	\$28,024,289	\$32,375,037

Intellectual Property Activity *FY 2015 – 2022*

source: Christine Flynn, PhD, Office of Technology Management

¹ Royalty & License Fee income Includes License Management Fees and equity sales.

² FY 2021 data for these categories is restated from *Fact Book 2022*. Additionally, the FY 2020 U.S. patent application total is revised from *FB 2021*.

	FY 2015	FY 2016	FY 2017	FY 2018
Invention Disclosures	63	46	60	71
New US Patent Applications Filed	43	52	41	65
Licenses/Options Executed	26	23	31	24
Licenses & Options Generating Income	105	99	89	87
Active License & Option Agreements	151	156	129	125
U.S. Patents Issued	14	7	11	7
Startup Companies Formed	6	0	7	1
Royalty & License Fee income ¹	\$3,999,520	\$4,427,744	\$4,551,981	\$3,702,514

	FY 2019	FY 2020	FY 2021	FY 2022
Invention Disclosures	58	52	50	59
New US Patent Applications Filed ²	63	58	57	57
Licenses/Options Executed ²	22	22	24	10
Licenses & Options Generating Income	73	75	88	78
Active License & Option Agreements	139	130	137	125
U.S. Patents Issued ²	16	8	17	18
Startup Companies Formed	5	2	4	1
Royalty & License Fee income ¹	\$5,045,102	\$3,385,894	\$7,840,499	\$4,192,900

Grant Proposals by Unit & Type FY 2018 – 2022

source: Frank La, Sponsored Projects Administration

Note: Data reflect the respective annual award amounts for the period it is effective. Clinical research projects that paid based on study subject enrollment were counted as awarded at 100 percent of the contracted amount in the year received, regardless of enrollment/earned revenue. Reporting is on a cash-basis method, reflecting revenue as it is received.

	FY 2018 \$	#	FY 2019 \$	#	FY 2020 \$	#	FY 2021 \$	#	FY 2022\$	#
School of Biomedical Informatics										
Fellowship/Scholarship	\$0	0	\$0	0	\$0	0	\$0	0	\$141,063	3
Instruction	0	0	0	0	18,326	1	73,012	2	18,776	1
Research	108,019,227	85	173,011,762	103	266,889,675	142	340,560,737	169	223,415,440	121
Other	17,974	1	17,950	1	0	0	35,447	1	179,484	2
Total SMBI	\$108,037,201	86	\$173,029,712	104	\$266,908,001	143	\$340,669,196	172	\$223,754,763	127
School of Dentistry										
Fellowship/Scholarship	\$0	0	\$0	0	\$179,741	2	\$95,644	3	\$771,315	3
Instruction	1,293,339	2	450,356	4	0	0	2,950,635	1	1,289,922	1
Research	36,795,279	73	49,079,219	57	45,376,388	65	49,459,435	53	64,829,610	53
Other	0	0	0	0	2,701,030	2	64,999	1	1,291,535	4
Total SOD	\$38,088,618	75	\$49,529,575	61	\$48,257,159	69	\$52,570,713	58	\$68,182,382	61
Graduate School Biomedical Sciences										
Fellowship/Scholarship	\$0	0	\$0	0	\$135,360	1	\$63,040	1	\$0	0
Instruction	1,675,793	4	0	0	0	0	0	0	0	0
Research	198,237	2	7,000	2	0	0	0	0	0	0
Total GSBS	\$1,874,030	6	\$7,000	2	\$135,360	1	\$63,040	1	\$0	0
McGovern Medical School										
Fellowship/Scholarship	\$0	0	\$0	0	\$4,483,168	42	\$6,950,098	56	\$7,999,358	59
Instruction	13,456,282	77	10,045,042	70	472,632	10	5,639,656	7	5,616,849	12
Research	855,035,571	879	1,029,384,141	931	915,254,440	867	1,035,251,741	894	991,621,505	864
Other	7,547,564	13	1,287,063	10	20,425,207	18	13,798,794	25	47,096,064	42
Total MMS	\$876,039,417	969	\$1,040,716,246	1,011	\$940,635,447	937	\$1,061,640,289	982	\$1,052,333,776	977
Cizik School of Nursing										
Fellowship/Scholarship	\$0	0	\$0	0	\$418,663	4	\$578,301	2	\$449,129	1
Instruction	1,114,822	3	1,718,274	5	1,499,738	2	758,936	2	885,023	3
Research	14,001,645	32	12,399,811	24	8,613,107	23	30,243,252	34	48,913,648	40
Other	0	0	8,807,219	3	1,413,979	6	220,869	4	359,138	3
Total CSON	\$15,116,467	35	\$22,925,304	32	\$11,945,487	35	\$31,801,358	42	\$50,606,938	47
School of Public Health										
Fellowship/Scholarship	\$0	0	\$0	0	\$410,889	2	\$197,196	3	\$477,887	4
Instruction	3,396,481	6	4,570,327	8	14,758,071	6	5,080,773	8	72,982	2
Research	406,249,428	330	309,336,223	276	309,034,392	310	308,385,381	300	328,948,345	306
Other	4,019,671	8	10,493,985	6	530,759	4	7,269,443	16	28,710,502	24
Total SPH	\$413,665,580	344	\$324,400,535	290	\$324,734,111	322	\$320,932,793	327	\$358,209,716	336
University Administration										
Fellowship/Scholarship	\$0	0	\$0	0	\$0	0	\$0	0	\$0	0
Instruction	0	0	0	0	204,075	1	0	0	0	0
Research	0	0	0	0	11,171,690	5	0	0	0	0
Other	0	0	0	0	1,995,703	2	0	0	0	0
Total UA	\$0	0	\$0	0	\$13,371,468	8	\$0	0	\$0	0
Behavioral Sciences Campus										
Fellowship/Scholarship	\$0	0	\$0	0	\$151,624	1	\$0	0	\$0	0
Research	0	0	0	0	0	0	0	0	0	0
Other	0	0	0	0	0	0	0	0	0	0
Total BSC	\$0	0	\$0	0	\$151,624	1	\$0	0	\$0	0
Texas Epidemic Public Health Institute										
Fellowship/Scholarship	-	-	-	-	-	-	-	-	\$0	0
Instruction	-	-	-	-	-	-	-	-	0	0
Research	-	-	-	-	-	-	-	-	0	0
Other	-	-	-	-	-	-	-	-	34,718,494	1
Total TEPHI	-	-	-	-	-	-	-	-	\$34,718,494	1
UTHealth Houston Total										
Fellowship/Scholarship	\$0	0	\$0	0	\$5,779,445	52	\$7,884,279	65	\$9,838,752	70
Instruction	20,936,717	92	16,783,999	87	16,952,842	20	14,503,012	20	7,883,552	19
Research	1,420,299,387	1,401	1,573,218,156	1,393	1,556,339,692	1,412	1,763,900,546	1,450	1,657,728,548	1,384
Other	11,585,209	22	20,606,217	20	27,066,678	32	21,389,552	47	112,355,217	76
Grand Total	\$1,452,821,313	1,515	\$1,610,608,372	1,500	\$1,606,138,657	1,516	\$1,807,677,389	1,582	\$1,787,806,069	1,549

Contract & Grant Awards by Unit & Type FY 2018 - 2022

source: Frank La, Sponsored Projects Administration

Note: In FY 2022, Sponsored Projects Administration recategorized UTHealth's extramural funding portfolio to better reflect the broader range of the university's program types: 1) "Research" has been sub-categorized into "Basic/Lab Research or Services" (and includes federal shared equipment grants) and "Clinical Research", 2) Instruction and Fellowship/Scholarship have been combined into "Training/Fellowship/Scholarship" to highlight the number of programs geared toward developing future research scientists and, 3) the Non-Research/Public Service category has been separated from "Other" to reflect the growth of public health and clinical service programs. Examples of these are the county-wide covid testing contract and the federal Ryan White HIV/AIDS program. Last, the funding amounts are all inclusive of Sponsored Projects but the number of awards, prior to 2022, did not include clinical trials. FY 2022 number of awards includes 395 clinical trials.

	FY 2018	#	FY 2019	#	FY 2020	#	FY 2021	#	FY 2022	#
School of Biomedical Informatics										
Basic/Lab Research or Services	\$11,618,501	55	\$11,785,571	55	\$13,443,675	51	\$15,336,975	56	\$13,377,602	54
Clinical Research	0	0	0	0	0	0	0	0	3,380,194	19
Non-Research/Public Service	0	0	0	0	0	0	0	0	936,635	2
Training/Fellowship/Scholarship	0	0	35,332	1	0	0	73,012	2	179,176	5
Other	730,851	4	354,806	2	1,297,943	4	952,011	3	0	0
Total SBMI	\$12,349,352	59	\$12,175,709	58	\$14,741,618	55	\$16,361,998	61	\$17,873,607	80
School of Dentistry										
Basic/Lab Research or Services	\$4,876,439	44	\$4,984,794	35	\$3,928,083	35	\$4,436,968	49	\$5,835,804	45
Clinical Research	0	0	0	0	0	0	0	0	1,555,280	23
Non-Research/Public Service	0	0	0	0	0	0	0	0	462,497	2
Training/Fellowship/Scholarship	444,572	3	520,419	5	332,732	5	156,040	6	307,908	3
Other	0	0	0	0	0	0	65,000	1	0	0
Total SOD	\$5,321,011	47	\$5,505,213	40	\$4,260,815	40	\$4,658,008	56	\$8,161,489	73
Grad School Biomedical Sciences										
Basic/Lab Research or Services	\$0	0	\$3,000	1	\$0	0	\$0	0	\$0	0
Clinical Research	0	0	0	0	0	0	0	0	0	0
Non-Research/Public Service	0	0	0	0	0	0	0	0	0	0
Training/Fellowship/Scholarship	0	0	32,521	1	0	0	0	0	0	0
Other	0	0	0	0	0	0	0	0	0	0
Total GSBS	\$0	0	\$35,521	2	\$0	0	\$0	0	\$0	0
McGovern Medical School										
Basic/Lab Research or Services	\$129,621,564	766	\$156,705,987	804	\$140,229,606	740	\$157,670,556	931	\$88,067,375	525
Clinical Research	0	0	0	0	0	0	0	0	76,127,568	864
Non-Research/Public Service	0	0	0	0	0	0	0	0	36,915,213	52
Training/Fellowship/Scholarship	2,932,434	62	3,054,220	61	3,363,487	55	4,486,715	47	5,592,495	72
Other	29,492,724	46	1,564,790	11	27,768,474	49	43,924,809	66	37,935	4
Total MMS	\$162,046,722	874	\$161,324,997	876	\$171,361,567	844	\$206,082,080	1044	\$206,740,586	1,517
Cizik School of Nursing										
Basic/Lab Research or Services	\$376,935	10	\$2,143,558	21	\$1,769,879	15	\$2,276,945	18	\$0	1
Clinical Research	0	0	0	0	0	0	0	0	3,338,979	24
Non-Research/Public Service	0	0	0	0	0	0	0	0	178,325	3
Training/Fellowship/Scholarship	1,344,325	8	570,021	5	583,642	4	551,402	3	168,498	4
Other	488,961	3	0	0	250,197	4	242,577	9	35,684	1
Total CSON	\$2,210,221	21	\$2,713,579	26	\$2,603,718	23	\$3,070,924	30	\$3,721,486	33

continued **Contract & Grant Awards by Unit & Type FY 2018 - 2022**

	FY 2018	#	FY 2019	#	FY 2020	#	FY 2021	#	FY 2022	#
School of Public Health										
Basic/Lab Research or Services	\$40,258,947	216	\$48,732,884	239	\$53,665,393	235	\$51,633,133	271	\$19,995,350	126
Clinical Research	0	0	0	0	0	0	0	0	47,321,646	186
Non-Research/Public Service	0	0	0	0	0	0	0	0	38,633,742	56
Training/Fellowship/Scholarship	2,489,129	9	2,335,701	6	1,192,969	5	4,363,622	14	3,128,514	12
Other	1,101,727	14	1,174,479	8	27,537,525	18	19,198,196	45	356,721	4
Total SPH	\$43,849,803	239	\$52,243,064	253	\$82,395,887	258	\$75,194,951	330	\$109,435,973	384
University Administration										
Basic/Lab Research or Services	\$0	0	\$7,481,422	3	\$15,280,130	5	\$0	0	\$19,576	1
Clinical Research	0	0	0	0	0	0	0	0	0	0
Non-Research/Public Service	0	0	0	0	0	0	0	0	15,700	1
Training/Fellowship/Scholarship	0	0	0	0	1,876,086	2	110,080	1	247,433	2
Other	0	0	0	0	1,995,703	2	7,914,206	6	0	0
Total UA	\$0	0	\$7,481,422	3	\$19,151,919	9	\$8,024,286	7	\$282,709	4
Behavioral Sciences Campus										
Clinical Research	\$0	0	\$0	0	\$0	0	\$0	0	\$0	0
Total BSC	\$0	0	\$0	0	\$0	0	\$0	0	\$0	0
Texas Epidemic Public Health Institute										
Basic/Lab Research or Services	-	-	-	-	-	-	-	-	\$0	0
Clinical Research	-	-	-	-	-	-	-	-	0	0
Non-Research/Public Service	-	-	-	-	-	-	-	-	20,000,000	1
Training/Fellowship/Scholarship	-	-	-	-	-	-	-	-	0	0
Other	-	-	-	-	-	-	-	-	0	0
Total TEPHI	-	-	-	-	-	-	-	-	\$20,000,000	1
UTHealth Houston Total										
Basic/Lab Research or Services	\$186,752,386	1091	\$231,837,216	1158	\$228,316,766	1081	\$231,354,577	1325	\$127,295,707	752
Clinical Research	0	0	0	0	0	0	0	0	131,723,667	1116
Non-Research/Public Service	0	0	0	0	0	0	0	0	97,142,112	117
Training/Fellowship/Scholarship	7,210,460	82	6,548,214	79	7,348,916	71	9,740,871	73	9,624,024	98
Other	31,814,263	67	3,094,075	21	58,849,842	77	72,296,799	130	430,340	9
Grand Total	\$225,777,109	1,240	\$241,479,505	1,258	\$294,515,524	1,229	\$313,392,247	1,528	\$366,215,850	2,092

Contract & Grant Awards by Source FY 2018 - 2022

source: Frank La, Sponsored Projects Administration

	FY 2018		FY 2019		FY 2020		FY 2021		FY 2022	
	\$	#	\$	#	\$	#	\$	#	\$	#
School of Biomedical Informatics										
Federal	\$9,289,074	47	\$8,888,573	49	\$11,444,366	44	\$13,115,460	49	\$13,864,544	62
State	2,690,125	4	2,772,154	4	2,531,926	4	2,433,362	4	2,668,002	8
Local	100,000	1	0	0	0	0	0	0	0	0
FND/NFP	270,153	7	344,855	3	644,826	5	583,400	4	853,874	6
Industry	0	0	109,371	1	120,500	2	229,776	2	487,187	4
Other	0	0	60,756	1	0	0	0	0	0	0
Private	0	0	0	0	0	0	0	0	0	0
Total SBMI	\$12,349,352	59	\$12,175,709	58	\$14,741,618	55	\$16,361,998	59	\$17,873,607	80
School of Dentistry										
Federal	\$4,644,388	35	\$4,591,983	35	\$3,565,576	28	\$3,605,377	28	\$7,246,729	43
State	0	0	0	0	65,238	1	133,484	3	189,600	2
Local	0	0	0	0	0	0	0	0	0	0
FND/NFP	504,741	6	467,235	7	566,297	9	645,045	17	620,996	19
Industry	171,882	6	67,443	5	63,704	4	274,102	11	79,164	8
Other	0	0	18,552	1	0	0	0	0	25,000	1
Private	0	0	0	0	0	0	0	0	0	0
Total SOD	\$5,321,011	47	\$5,505,213	48	\$4,260,815	42	\$4,658,008	59	\$8,161,489	73
Graduate School Biomedical Sciences										
Federal	\$0	0	\$32,521	1	\$0	0	\$0	0	\$0	0
State	0	0	0	0	0	0	0	0	0	0
FND/NFP	0	0	3,000	1	0	0	0	0	0	0
Private	0	0	0	0	0	0	0	0	0	0
Total GSBS	\$0	0	\$35,521	2	\$0	0	\$0	0	\$0	0
McGovern Medical School										
Federal	\$122,321,528	482	\$130,754,859	507	\$119,730,776	520	\$152,520,718	663	\$156,479,091	742
State	11,518,909	36	6,876,240	23	20,217,971	49	28,072,630	57	19,332,496	62
Local	2,600,000	2	105,000	4	104,930	4	42,918	2	189,597	3
FND/NFP	9,854,641	121	8,395,564	112	12,412,615	136	7,548,444	125	8,850,889	146
Industry	15,211,793	224	14,998,764	223	18,457,562	457	17,143,455	509	20,780,489	535
Other	539,852	9	194,570	7	437,713	14	753,915	23	1,108,024	29
Private	0	0	0	0	0	0	0	0	0	0
Total MMS	\$162,046,722	874	\$161,324,997	876	\$171,361,567	1180	\$206,082,080	1379	\$206,740,586	1,517
Cizik School of Nursing										
Federal	\$1,428,213	12	\$2,003,238	18	\$1,871,102	15	\$2,069,342	18	\$3,028,014	19
State	512,200	2	492,800	1	493,830	1	680,131	3	177,535	4
Local	2,000	1	0	0	0	0	0	0	10,000	2
FND/NFP	140,800	4	170,998	4	78,128	6	234,572	8	505,937	8
Industry	110,820	0	24,362	0	160,658	2	86,879	1	0	0
Other	161,188	4	22,181	3	0	0	0	0	0	0
Private	0	0	0	0	0	0	0	0	0	0
Total CSON	\$2,210,221	21	\$2,713,579	26	\$2,603,718	24	\$3,070,924	30	\$3,721,486	33

continued **Contract & Grant Awards by Source** FY 2018 – 2022

	FY 2018		FY 2019		FY 2020		FY 2021		FY 2022	
	\$	#	\$	#	\$	#	\$	#	\$	#
School of Public Health										
Federal	\$32,135,156	159	\$34,610,531	178	\$44,676,997	174	\$67,356,585	227	\$95,928,208	279
State	5,517,892	20	8,265,558	22	30,239,409	23	1,631,633	30	8,821,894	37
Local	102,118	2	427,580	5	377,408	4	302,363	8	445,395	7
FND/NFP	5,450,572	48	8,215,582	38	6,676,512	50	5,199,958	49	2,795,684	40
Industry	472,228	7	346,476	6	207,626	6	444,236	9	183,692	5
Other	171,837	3	377,338	4	217,935	2	257,301	5	1,261,100	16
Private	0	0	0	0	0	0	0	0	0	0
Total SPH	\$43,849,803	239	\$52,243,065	253	\$82,395,887	259	\$75,192,076	328	\$109,435,973	384
University Administration										
Federal	\$0	0	\$7,481,422	3	\$19,151,919	9	\$7,914,206	6	\$35,276	2
FND/NFP	0	0	0	0	0	0	110,080	1	247,433	2
Industry	0	0	0	0	0	0	0	0	0	0
Private	0	0	0	0	0	0	0	0	0	0
Total UA	\$0	0	\$7,481,422	3	\$19,151,919	9	\$8,024,286	7	\$282,709	4
Behavioral Sciences Campus										
Federal	\$0	0	\$0	0	\$0	0	\$0	0	\$0	0
Private	0	0	0	0	0	0	0	0	0	0
Total BSC	\$0	0	\$0	0	\$0	0	\$0	0	\$0	0
Texas Epidemic Public Health Institute										
Federal	-	-	-	-	-	-	-	-	\$20,000,000	1
State	-	-	-	-	-	-	-	-	0	0
Local	-	-	-	-	-	-	-	-	0	0
FND/NFP	-	-	-	-	-	-	-	-	0	0
Industry	-	-	-	-	-	-	-	-	0	0
Other	-	-	-	-	-	-	-	-	0	0
Private	-	-	-	-	-	-	-	-	0	0
Total TEPHI	-	-	-	-	-	-	-	-	\$20,000,000	1
UTHealth Houston Total										
Federal	\$169,818,359	735	\$188,723,127	791	\$200,440,736	790	\$246,581,688	991	\$296,581,862	1,148
State	20,239,126	62	18,406,752	50	53,548,374	78	32,951,240	97	31,189,527	113
Local	2,804,118	6	532,580	9	482,338	8	345,281	10	644,992	12
FND/NFP	16,220,907	186	17,597,234	165	20,378,378	206	14,211,419	203	13,874,813	221
Industry	15,966,723	237	15,546,416	235	19,010,050	471	18,288,528	533	21,530,532	552
Other	727,877	14	673,397	16	655,648	16	1,011,216	28	2,394,124	46
Private	0	0	0	0	0	0	0	0	0	0
Grand Total	\$225,777,110	1,240	\$241,479,506	1,266	\$294,515,524	1,569	\$313,389,372	1,862	\$366,215,850	2,092

NIH Awards by Unit FY 2015 - 2022

source: Frank La, Sponsored Projects Administration

	FY 2015		FY 2016		FY 2017		FY 2018	
	Amount	#	Amount	#	Amount	#	Amount	#
School of Biomedical Informatics	\$2,166,600	8	\$2,528,418	10	\$4,097,971	12	\$5,872,750	20
School of Dentistry	2,674,524	8	2,715,755	10	3,473,908	10	2,798,652	10
Graduate School of Biomedical Sciences	0	0	0	0	0	0	0	0
McGovern Medical School	50,983,796	145	65,929,242	196	60,719,239	230	66,918,386	235
Cizik School of Nursing	877,723	3	468,212	2	358,672	1	0	0
School of Public Health	20,663,212	39	18,626,712	32	17,381,015	26	17,758,537	36
University Administration	0	0	0	0	0	0	0	0
Grand Total UTHealth Houston	\$77,365,855	203	\$90,268,339	250	\$86,030,805	279	\$93,348,325	301

	FY 2019		FY 2020		FY 2021		FY 2022	
	Amount	#	Amount	#	Amount	#	Amount	#
School of Biomedical Informatics	\$4,718,412	18	\$7,577,507	20	\$8,001,760	24	\$6,770,283	24
School of Dentistry	2,444,741	10	1,625,833	8	2,504,238	10	4,247,847	16
Graduate School of Biomedical Sciences	32,521	1	0	0	0	0	0	0
McGovern Medical School	74,982,817	226	68,780,097	208	95,672,595	302	96,886,767	344
Cizik School of Nursing	1,386,295	4	1,307,260	5	1,729,729	6	2,751,704	8
School of Public Health	18,578,288	48	20,737,411	57	21,724,160	59	23,065,976	78
University Administration	7,481,422	3	16,180,088	3	0	0	0	0
Grand Total UTHealth Houston	\$109,624,496	310	\$116,208,195	301	\$129,632,482	401	\$133,722,577	470

Federal Awards by Agency FY 2018 - 2022

source: Frank La, Sponsored Projects Administration

Note: Data reflects the respective annual award amounts for the period it is effective. Clinical research projects that paid based on study subject enrollment were counted as awarded at 100 percent of the contracted amount in the year received, regardless of enrollment/earned revenue. Reporting is on a cash-basis method, reflecting revenue as it is received.

	FY 2018		FY 2019		FY 2020		FY 2021		FY 2022	
	\$	#	\$	#	\$	#	\$	#	\$	#
Public Health Service (includes NIH)	\$100,437,011	320	\$115,881,885	318	\$119,562,172	314	\$134,304,301	413	\$147,825,243	482
NASA	0	0	0	0	\$0	0	\$124,836	1	\$119,685	1
National Science Foundation	648,714	6	119,522	2	\$963,340	5	\$1,484,180	8	\$916,998	9
Other Federal- Direct	8,004,928	18	11,013,388	26	\$9,843,702	24	\$16,620,063	30	\$5,145,590	28
Federal Subcontracts	60,727,706	391	61,708,332	423	\$70,071,522	408	\$94,048,309	505	\$142,574,346	628
Grand Total	\$169,818,359	735	\$188,723,127	769	\$200,440,736	751	\$246,581,689	957	\$296,581,862	1,148

Principal Investigators by Unit FY 2015 - 2022

source: Frank La, Sponsored Projects Administration

Note: data represent the total number of PIs who held an active grant during the noted fiscal year.

	FY 2015	FY 2016	FY 2017	FY 2018	FY 2019	FY 2020	FY 2021	FY 2022
School of Biomedical Informatics	12	12	15	17	20	17	19	20
School of Dentistry	18	17	16	19	25	25	30	32
Grad School of Biomedical Sciences	1	3	0	0	2	0	0	0
McGovern Medical School	297	331	366	388	406	421	450	490
Cizik School of Nursing	17	18	10	16	15	15	14	19
School of Public Health	95	97	93	95	96	105	113	116
Behavioral Sciences Campus	0	0	0	0	0	0	0	0
Texas Epidemic Public Health Institute	-	-	-	-	-	-	-	1
University Administration	2	2	1	0	1	4	2	3
Grand Total	442	480	501	535	565	587	628	681

Sponsored Project Activity Report *FY 2022*

source: Scott Barnett, Accounting & Budget

Note: Data represent amounts expended, not awarded.

	Grants & Contracts		Gifts	Endowment	Total
	Direct Costs	Indirect Costs	Direct Costs	Direct Costs	
School of Biomedical Informatics	14,505,930	4,181,330	330,794	248,448	\$19,266,502
School of Dentistry	5,802,127	1,662,395	736,811	1,100,749	\$9,302,083
McGovern Medical School	203,825,851	44,499,036	14,422,083	15,216,065	\$277,963,035
Cizik School of Nursing	3,321,202	666,842	734,350	981,599	\$5,703,993
School of Public Health	69,889,191	17,497,914	2,950,289	1,324,770	\$91,662,164
Texas Epidemic Public Health Institute	751,322	187,601	0	0	\$938,923
Behavioral Sciences Center	17,198	0	0	130,745	\$147,942
University Administration	15,109,779	3,056,617	419,774	457,582	\$19,043,751
Grand Total	\$313,222,599	\$71,751,736	\$19,594,101	\$19,459,958	\$424,028,394

Patient Care

McGovern Medical School Outpatient Clinical Activity - Visits	57
Un-sponsored Medical & Dental Charity Care Provided by Faculty	57
School of Dentistry Clinical Activity: Patient Visits	58
School of Dentistry Clinical Activity: Patient Treatments	59
UT Health Services Patient Visits	60
Behavioral Sciences Campus Clinical Activity	60
Medical Practice Plan Summary of Operations	61

McGovern Medical School Outpatient Clinical Activity - Visits *FY 2013 - 2022*

source: Performance Measures Report to the Legislative Budget Board, November 2022

Note: The COVID-19 pandemic beginning in March 2020 had a profound effect on the ability of UTHealth Houston medical, dental and nursing practitioners to perform patient care. FY 2020 decreases are the direct result of clinic closures and subsequent reductions in patient visits due to social distancing requirements. These effects are notable on the patient care tables that follow in this chapter.

	Total Outpatient Visits
FY 2013	1,279,023
FY 2014	1,487,696
FY 2015	1,647,382
FY 2016	1,757,911
FY 2017	1,801,859
FY 2018	1,837,896
FY 2019	1,874,654
FY 2020	1,698,436
FY 2021	1,791,849
FY 2022	1,811,559

Un-sponsored Medical & Dental Charity Care Provided by Faculty *FY 2018-2022*

sources: Performance Measures Report to the Legislative Budget Board, November 2022, and Shalizeh Patel, DDS, MEd, School of Dentistry

Definition of Un-sponsored Charity Care: Total dollar amount of indigent patient charges provided in hospitals and clinics contracted with or owned, operated, and funded by the health-related institutions during the reporting period.

	McGovern Medical School	School of Dentistry	Total Cost of Un-sponsored Charity Care
FY 2018	\$26,693,335	\$1,900,423	\$28,593,758
FY 2019	46,245,423	1,618,120	\$47,863,543
FY 2020	9,201,116	1,512,339	\$10,713,415
FY 2021	28,724,929	894,691	\$29,619,620
FY 2022	14,788,429	1,648,011	\$16,436,440

School of Dentistry Clinical Activity: Patient Visits FY 2015 - 2022

source: Shalizeh Patel, DDS, MEd, School of Dentistry

	FY 2015	FY 2016	FY 2017	FY 2018	FY 2019	FY 2020	FY 2021	FY 2022
School of Dentistry Clinics								
Main Campus (Student & Resident Clinics)	55,086	61,436	71,000	65,919	69,183	51,655	61,157	66,504
UT Dentists - Group Practice	6,254	6,083	7,481	7,857	9,738	6,566	7,640	8,816
UTHealth Pediatric Dentistry	3,668	7,057	6,504	7,630	6,580	4,527	5,982	6,566
UT OMS Scurlock Tower	3,134	2,956	1,870	3,444	1,884	1,424	2,087	1,598
University Dental Center (AEGD/GPR Resident Clinic)	6,076	8,155	7,714	5,568	6,249	4,541	5,618	5,593
Subtotal Clinics	74,218	85,687	94,569	90,418	93,634	68,713	82,484	89,077
Outreach Clinics								
Access Health	304	297	161	345	0	0	0	0
Bering Omega Dental Clinic	560	383	263	261	240	129	0	0
Brazos Valley	0	0	0	0	0	0	0	0
City of Houston La Casa	682	1,375	1,069	347	513	658	0	289
City of Houston Sharpstown	0	779	636	316	488	893	0	430
City of Houston Sunnyside	0	0	0	0	0	0	0	7
Harris County Health Department - DH Student	189	151	163	181	31	123	0	0
Harris Health System Dental Services - UT Dentists	0	0	0	0	0	0	19,517	23,330
Harris Health System - Dental Center: Student (DDS)/Resident Activities	0	0	0	0	0	0	55	696
Harris Health System - Monroe Clinic: Student (DDS)/Resident Activities	0	0	0	0	0	0	1,450	3,235
Geriatric Education Sites	0	68	77	98	83	44	0	0
HOPE Clinic	0	0	0	0	0	0	0	0
Healthcare for the Homeless - Houston	0	112	534	489	406	380	326	163
Mobile Dental Van	1,492	1,368	1,355	1,539	1,990	1,271	767	829
San Jose Clinic	161	615	346	567	485	157	206	390
Spring Branch Community Health Center			0	0	0	138	209	0
TCH The Centers for Children & Women	3,559	6,497	5,724	7,348	6,811	3,412	2,484	13
Harris County Resources for Children & Adults	0	0	0	0	0	0	0	316
TOMAGWA HealthCare Ministries	193	422	444	541	667	477	498	435
Veterans Administration Medical Center	384	404	367	0	0	0	0	0
Subtotal Outreach	7,524	12,471	11,139	12,032	11,714	7,682	25,512	30,133
Hospitals								
Harris Health System - Ben Taub	5,528	6,020	4,658	5,057	5,037	3,207	3,563	5,625
Harris Health System - Lyndon B. Johnson	4,296	4,140	5,850	6,293	5,591	4,335	3,667	5,341
Memorial Hermann -TMC	706	962	206	139	838	167	234	688
Houston Methodist	64	76	89	65	83	33	30	234
Veterans Administration Medical Center	3,258	3,421	4,452	3,464	3,791	2,641	2,430	2,130
Subtotal Hospitals	13,852	14,619	15,255	15,018	15,340	10,383	9,924	14,018
Grand Total Patient Visits	95,594	112,777	120,963	117,468	120,688	86,778	117,920	133,228

School of Dentistry Clinical Activity: Patient Treatments *FY 2015 - 2022*

source: Shalizeh Patel, DDS, MEd, School of Dentistry

	FY 2015	FY 2016	FY 2017	FY 2018	FY 2019	FY 2020	FY 2021	FY 2022
School of Dentistry Clinics								
Main Campus (Student & Resident Clinics)	166,291	189,128	217,299	191,451	208,858	160,484	208,009	222,023
UT Dentists - Group Practice	20,358	21,280	25,136	23,387	26,144	10,281	28,924	35,100
UTHealth Pediatric Dentistry	26,344	49,369	42,748	49,599	45,898	35,309	50,040	52,326
UT OMS Scurlock Tower	3,462	3,473	1,870	4,184	4,642	4,087	5,890	5,133
University Dental Center (AEGD/GPR Resident Clinic)	10,901	15,418	25,892	22,341	23,258	18,328	25,221	23,865
Subtotal Clinics	227,356	278,668	312,945	290,962	308,800	228,489	318,084	338,447
Outreach Clinics								
Access Health	729	402	205	457	0	0	0	0
Bering Omega Dental Clinic	244	266	185	135	245	143	0	0
Brazos Valley	0	0	0	0	0	0	0	0
City of Houston La Casa	1,850	5,313	3,984	2,480	1,920	5,234	0	1,257
City of Houston Sharpstown		1,865	1,642	2,403	1,364	4,358	0	2,110
City of Houston Sunnyside	0	0	0	0	0	0	0	48
Harris County Health Department - DH Student	400	328	359	520	311	360	0	0
Harris Health System Dental Services - UT Dentists	0	0	0	0	0	0	65,625	95,665
Harris Health System - Dental Center: Student (DDS)/Resident Activities	0	0	0	0	0	0	338	2,964
Harris Health System - Monroe Clinic: Student (DDS)/Resident Activities	0	0	0	0	0	0	1,091	1,240
Geriatric Education Sites		68	77	98	83	44	0	0
HOPE Clinic	0	0	0	0	0	0	0	0
Healthcare for the Homeless - Houston	0	238	1,003	1,192	527	608	617	385
Mobile Dental Van	3,647	3,390	3,599	7,134	9,746	4,216	2,494	2,569
San Jose Clinic	190	818	443	767	498	163	347	722
Spring Branch Community Health Center	0	0	0	0	0	152	349	0
TCH The Centers for Children & Women	11,195	21,878	25,131	31,663	31,488	14,102	11,253	57
Harris County Resources for Children & Adults			0	0	-	0	0	1,264
TOMAGWA HealthCare Ministries	408	641	745	1,192	1,457	940	1,349	1,406
VA Medical Center	995	1,045	829	0	0	0	0	0
Subtotal Outreach	19,658	36,252	38,202	48,041	47,639	30,320	83,463	109,687
Hospitals								
Harris Health System - Ben Taub	5,891	7,633	2,215	1,322	3,132	4,484	5,970	5,625
Harris Health System - Lyndon B. Johnson	4,679	4,634	5,850	1,108	3,511	3,485	4,910	6,196
Memorial Hermann -TMC	1,843	3,334	841	139	838	167	234	688
Houston Methodist	64	76	89	65	83	33	30	234
VA Medical Center	9,254	9,717	8,834	10,699	9,267	5,107	5,709	4,248
Subtotal Hospitals	21,731	25,394	17,829	13,333	16,831	13,276	16,853	16,991
Grand Total Treatments	268,745	340,314	368,976	352,336	373,270	272,085	418,400	465,125

UT Health Services Patient Visits *FY 2013 - 2022*

source: Karen Hayes, BSN, RN, Cizik School of Nursing

¹Total visits does not include on-site patients seen under contract with local private-sector businesses. Increased employee visits in FY 2020 is attributable to COVID-19 testing.

	2013	2014	2015	2016	2017	2018	2019	2020	2021	2022
Employee Visits	6,716	4,981	7,241	7,372	5,486	5,360	7,983	11,171	7,781	5,676
Private Patient Visits	5,472	5,548	5,347	9,571	7,092	6,156	7,654	6,613	3,566	2,070
Total Visits¹	12,188	10,529	12,588	16,943	12,578	11,516	15,637	17,784	11,347	7,746

Behavioral Sciences Campus Clinical Activity *FY 2011-2022*

source: Lois Pierson, CPA, Dunn Behavioral Sciences Center

note: Includes the UT Harris County Psychiatric Center and the Dunn Behavioral Sciences Center

	FY 2011	FY 2012	FY 2013	FY 2014	FY 2015	FY 2016
Average Daily Census	188	192	225.99	221.64	224.70	218.27
Number of Admissions	7,744	7,199	8,437	8,431	8,808	9,583
Patient Days	68,532	69,994	77,237	80,899	81,655	79,887
Average Length of Stay	8.8	9.7	9.2	9.6	9.3	8.3

	FY 2017	FY 2018	FY 2019	FY 2020	FY 2021	FY 2022
Average Daily Census	211.3	210.9	220.6	206.5	202.3	221.1
Number of Admissions	8,601	8,583	8,552	8,396	7,713	6,406
Patient Days	77,110	76,973	80,503	75,385	73,843	80,690
Average Length of Stay	9	9	9	9	10	13

Medical Practice Plan Summary of Operations *for the year ending August 31, 2022*

source: Scott Barnett, Accounting & Budget

Note: Includes the operations of the nonprofit healthcare corporation.

Operating Revenues:

Gross Patient Charges		
Gross Patient Charges Related to Uncompensated Care	\$ 1,636,263,005.01	
Other Gross Patient Charges	791,194,510.25	
Total Gross Patient Charges		2,427,457,515.26
Less: Discounts and Allowances		
Contractual Allowances - Medicaid	(351,839,242.17)	
Contractual Allowances - Medicare	(547,628,167.86)	
Contractual Allowances - Managed Care & Other Insurance	(626,414,508.71)	
Other Unreimbursed Medical Charges	(317,303,694.30)	
Bad Debt Expense	(132,447,284.72)	
Total Discounts and Allowances		(1,975,632,897.76)
Net Patient Revenues		451,824,617.50
Contractual Revenues		690,347,121.61
Other Operating Revenues		94,072,386.53

Total Operating Revenues

1,236,244,125.64

Operating Expenses:

Faculty Salaries	487,386,155.31
Staff Salaries	325,498,220.15
Resident Salaries	15,185,988.51
Fringe Benefits	168,359,341.54
Maintenance and Operations	103,709,625.47
Professional Liability Insurance	355,628.38
Travel	3,054,684.52
Official Functions	827,813.99
Other Expenses	14,588,256.75

Total Operating Expenses

1,118,965,714.62

Operating Income (Loss)

117,278,411.02

Nonoperating Revenues (Expenses):

Federal Nonexchange Sponsored Programs	3,066,217.00
Investment Income	3,951,571.08
Net Increase (Decrease) in Fair Value of Investments	(10,060,687.60)
Interest Expense on Capital Asset Financings	(1,494,354.51)
Other Nonoperating Revenues (Expenses)	74,231.81

Net Nonoperating Revenues (Expenses)

(4,463,022.22)

Income (Loss) Before Other Revenues, Expenses, Gains or Losses

112,815,388.80

Transfers In:

Interfund/Interagency (62,968,093.79)

Transfers Out:

Debt Service (4,457,188.12)

Capital Outlay (4,611,688.50)

Balance Sheet Transactions Between Funds (17,862,725.93)

Change in Net Position

22,915,692.46

Net Position - September 1, 2021 55,155,001.68

Net Position - August 31, 2022 \$ 78,070,694.14

This page is intentionally blank

Employees

Faculty by Full-time/Part-time Status	65
Without Salary Faculty Appointments	65
Faculty by Race/Ethnicity & Gender	66
Faculty by Tenure Status & Gender	67
Classified Staff by Race/Ethnicity & Gender	68
Administrative & Professional (A&P) Staff by Race/Ethnicity & Gender	69
Employees by Employment Category	70
Budgeted Full-time Equivalent (FTE) Employees by Source of Funds	71
GSBS Faculty Membership by Institutional Affiliation	73
Faculty Honors	74

Faculty by Full-time/Part-time Status *Fall 2018 - 2022*

source: PeopleSoft HCM, Certified CBM008 Faculty Report to the Texas Higher Education Coordinating Board, as of October 1, 2022

Notes (*pertains to all faculty and employee tables*):

1. Faculty in the Graduate School of Biomedical Sciences are counted in their school of primary appointment.
2. McGovern Medical School counts include Institute of Molecular Medicine faculty and/or staff.
3. Per federal guidelines, postsecondary educational institutions must report data using nine specified reporting categories, which include: Nonresident aliens (for whom neither race nor ethnicity is reported), Hispanic/Latino of any race, For individuals who are non-Hispanic/Latino: American Indian or Alaska Native, Asian, Black or African American, Native Hawaiian or Other Pacific Islander, White, Two or more races, and Race and ethnicity unknown. <https://www2.ed.gov/policy/rschstat/guid/raceethnicity/questions.html>
4. Academic A&P are included in faculty totals since incumbents must hold a faculty position in order to be eligible to serve in an Academic A&P role and are counted as faculty in the CBM008 certified faculty report to the THECB.

School or Unit	Fall 2018		Fall 2019		Fall 2020		Fall 2021		Fall 2022		Total
	FT	PT	FT	PT	FT	PT	FT	PT	FT	PT	
School of Biomedical Informatics	35	5	39	4	40	3	39	3	44	6	50
School of Dentistry	126	107	121	110	115	86	118	80	116	92	208
Graduate School of Biomedical Sciences	-	-	-	-	-	-	-	-	2	-	2
McGovern Medical School	1,443	111	1,469	97	1,499	85	1,490	77	1,653	70	1,723
Cizik School of Nursing	88	79	91	99	91	63	91	58	98	48	146
School of Public Health	140	25	143	22	140	29	145	27	153	29	182
University Administration	9	1	3	0	5	0	5	0	13	0	13
Grand Total	1,841	328	1,866	332	1,890	266	1,888	245	2,079	245	2,324

Without Salary Faculty Appointments *FY 2013 - 2022*

source: Elizabeth Vinson, UTHealth OFaculty Affairs & Development

School/Unit	2013	2014	2015	2016	2017	2018	2019	2020	2021	2022
School of Biomedical Informatics	51	50	39	41	40	41	43	40	39	34
School of Dentistry	127	112	100	106	108	111	110	134	133	114
Graduate School of Biomedical Sciences	430	421	370	371	379	385	388	648	378	356
McGovern Medical School	544	549	556	560	584	587	622	352	506	313
Cizik School of Nursing	68	50	53	53	54	54	58	55	39	38
School of Public Health	344	338	304	283	304	315	283	308	204	176
Grand Total	1,564	1,520	1,422	1,414	1,469	1,493	1,504	1,537	1,299	1,031

Faculty by Race/Ethnicity & Gender Fall 2019 – 2022

source: PeopleSoft HCM, Certified CBM008 Faculty Report to the Texas Higher Education Coordinating Board, as of October 1, 2022

	Fall 2019			Fall 2020			Fall 2021			Fall 2022		
	Male	Female	Total	Male	Female	Total	Male	Female	Total	Male	Female	Total
School of Biomedical Informatics												
Asian	14	7	21	17	6	23	16	7	23	18	9	27
Black	0	1	1	0	1	1	0	1	1	1	1	2
Hispanic	0	0	0	0	0	0	0	1	1	1	1	2
White	12	7	19	10	7	17	9	6	15	11	7	18
International	1	0	1	1	0	1	1	0	1	1	0	1
Pacific Islander	1	0	1	1	0	1	1	0	1	0	0	0
SBMI Total	28	15	43	29	14	43	27	15	42	32	18	50
School of Dentistry												
Asian	19	32	51	18	34	52	19	34	53	21	34	55
Black	5	11	16	5	7	12	5	7	12	6	8	14
Hispanic	13	18	31	9	16	25	9	16	25	11	16	27
American Indian	1	0	1	1	0	1	1	0	1	1	0	1
White	77	49	126	72	37	109	71	33	104	66	35	101
International	2	3	5	0	1	1	1	1	2	5	2	7
Unidentified	1	0	1	1	0	1	1	0	1	0	3	3
SOD Total	118	113	231	106	95	201	107	91	198	110	98	208
Graduate School of Biomedical Sciences												
Black	-	-	-	-	-	-	-	-	-	0	1	1
White	-	-	-	-	-	-	-	-	-	1	0	1
GSBS Total	-	-	-	-	-	-	-	-	-	1	1	2
McGovern Medical School												
Asian	298	226	524	304	236	540	297	230	527	336	264	600
Black	28	65	93	28	62	90	27	60	87	30	67	97
Hispanic	77	74	151	84	75	159	85	79	164	92	88	180
American Indian	3	0	3	3	0	3	3	0	3	3	0	3
White	416	306	722	418	308	726	411	297	708	427	319	746
International	30	27	57	27	23	50	27	24	51	32	31	63
Unidentified	9	7	16	8	8	16	14	13	27	18	16	34
MMS Total	861	705	1,566	872	712	1,584	864	703	1,567	938	785	1,723
Cizik School of Nursing												
Asian	6	25	31	4	19	23	3	21	24	2	17	19
Black	2	37	39	2	26	28	2	26	28	2	29	31
Hispanic	1	18	19	1	14	15	1	11	12	1	13	14
White	8	85	93	8	75	83	8	71	79	6	72	78
International	1	1	2	1	1	2	1	1	2	1	0	1
Unidentified	1	5	6	0	3	3	0	4	4	0	3	3
CSON Total	19	171	190	16	138	154	15	134	149	12	134	146
School of Public Health												
Asian	17	19	36	20	18	38	18	18	36	21	19	40
Black	3	5	8	2	5	7	2	5	7	3	6	9
Hispanic	5	9	14	5	12	17	5	19	24	9	21	30
Am. Indian	1	0	1	1	0	1	1	0	1	1	0	1
White	45	60	105	47	57	104	42	56	98	42	52	94
International	1	0	1	1	0	1	1	0	1	1	1	2
Unidentified	0	0	0	0	1	1	1	4	5	1	5	6
SPH Total	72	93	165	76	93	169	70	102	172	78	104	182
University Administration												
Black	0	0	0	0	0	0	0	0	0	0	1	1
Hispanic	0	0	0	1	0	1	1	0	1	1	0	1
White	1	2	3	2	2	4	2	2	4	5	5	10
Unidentified	0	0	0	0	0	0	0	0	0	0	1	1
UA Total	1	2	3	3	2	5	3	2	5	6	7	13
UTHealth Houston												
Asian	354	309	663	363	313	676	353	310	663	398	343	741
Black	38	119	157	37	101	138	36	99	135	42	113	155
Hispanic	96	119	215	100	117	217	101	126	227	115	139	254
Am. Indian	5	0	5	5	0	5	5	0	5	5	0	5
White	559	509	1,068	557	486	1,043	543	465	1,008	558	490	1,048
Pacific Islander	1	0	1	1	0	1	1	0	1	0	0	0
International	35	31	66	30	25	55	31	26	57	40	34	74
Unidentified	11	12	23	9	12	21	16	21	37	19	28	47
Grand Total	1,099	1,099	2,198	1,102	1,054	2,156	1,086	1,047	2,133	1,177	1,147	2,324

Faculty by Tenure Status & Gender Fall 2019 – 2022

source: PeopleSoft HCM, Certified CBM008 Faculty Report to the Texas Higher Education Coordinating Board, as of October 1, 2022

	Fall 2019			Fall 2020			Fall 2021			Fall 2022		
	M	F	Total	M	F	Total	M	F	Total	M	F	Total
School of Biomedical Informatics												
Tenured	9	2	11	8	2	10	8	2	10	11	4	15
Non-tenured, On Track	4	3	7	5	3	8	5	3	8	3	1	4
Non Tenure Track	15	10	25	16	9	25	14	10	24	18	13	31
SBMI Total	28	15	43	29	14	43	27	15	42	32	18	50
School of Dentistry												
Tenured	19	8	27	21	8	29	21	6	27	26	4	30
Non-tenured, On Track	13	7	20	11	4	15	11	4	15	9	5	14
Non Tenure Track	86	98	184	74	83	157	75	81	156	75	89	164
SOD Total	118	113	231	106	95	201	107	91	198	110	98	208
Graduate School of Biomedical Sciences												
Tenured	-	-	-	-	-	-	-	-	-	1	0	1
Non Tenure Track	-	-	-	-	-	-	-	-	-	0	1	1
GSBS Total	-	-	-	-	-	-	-	-	-	1	1	2
McGovern Medical School												
Tenured	141	48	189	149	48	197	145	46	191	135	47	182
Non-tenured, On Track	49	29	78	46	29	75	41	27	68	42	28	70
Non Tenure Track	671	628	1,299	677	635	1,312	678	630	1,308	761	710	1,471
MMS Total	861	705	1,566	872	712	1,584	864	703	1,567	938	785	1,723
Cizik School of Nursing												
Tenured	0	8	8	2	7	9	1	7	8	1	8	9
Non-tenured, On Track	2	4	6	0	4	4	0	3	3	0	6	6
Non Tenure Track	17	159	176	14	127	141	14	124	138	11	120	131
CSON Total	19	171	190	16	138	154	15	134	149	12	134	146
School of Public Health												
Tenured	36	40	76	34	35	69	37	36	73	37	37	74
Non-tenured, On Track	21	15	36	23	18	41	17	25	42	17	21	38
Non Tenure Track	15	38	53	19	40	59	16	41	57	24	46	70
SPH Total	72	93	165	76	93	169	70	102	172	78	104	182
University Administration												
Tenured	0	0	0	0	0	0	0	0	0	4	1	5
Non Tenure Track	2	1	3	3	2	5	3	2	5	2	6	8
UA Total	2	1	3	3	2	5	3	2	5	6	7	13
UTHealth Houston												
Tenured	205	106	311	214	100	314	212	97	309	215	101	316
Non-tenured, On Track	89	58	147	85	58	143	74	62	136	71	61	132
Non Tenure Track	805	935	1,740	803	896	1,699	800	888	1,688	891	985	1,876
Grand Total	1,099	1,099	2,198	1,102	1,054	2,156	1,086	1,047	2,133	1,177	1,147	2,324

Classified Staff by Race/Ethnicity & Gender *Fall 2022*

source: PeopleSoft HCM, as of October 1, 2022

Note: Totals do not include casual or student employees.

	Female	Male	Total
School of Biomedical Informatics			
Asian	14	12	26
Black	14	0	14
Hispanic	10	7	17
Unidentified	2	1	3
White	15	7	22
Total SBMI	55	27	82
School of Dentistry			
Asian	34	7	41
Black	51	8	59
Hispanic	87	11	98
Unidentified	5	1	6
White	24	9	33
Total SOD	201	36	237
Graduate School of Biomedical Sciences			
Asian	5	1	6
Black	4	0	4
Hispanic	2	2	4
White	5	2	7
Total GSBS	16	5	21
McGovern Medical School			
Am. Indian	9	0	9
Asian	420	193	613
Black	964	121	1,085
Hawaiian	7	3	10
Hispanic	1,388	199	1,587
Unidentified	129	29	158
White	1,117	276	1,393
Total MMS	4,034	821	4,855
Cizik School of Nursing			
Asian	5	1	6
Black	52	4	56
Hispanic	28	10	38
Unidentified	1	2	3
White	28	14	42
Total CSON	114	31	145
School of Public Health			
Asian	43	20	63
Black	44	12	56
Hispanic	184	44	228
Unidentified	16	5	21
White	79	33	112
Total SPH	366	114	480

	Female	Male	Total
University Administration			
Am. Indian	1	3	4
Asian	37	64	101
Black	146	89	235
Hawaiian	1	1	2
Hispanic	109	119	228
Unidentified	23	12	35
White	140	147	287
Total Admin	457	435	892
Texas Epidemic Public Health Institute			
Asian	1	0	1
Black	2	0	2
Hispanic	6	3	9
Unidentified	1	0	1
White	4	0	4
Total TEPHI	14	3	17
Behavioral Sciences Campus			
Am. Indian		2	2
Asian	47	46	93
Black	216	166	382
Hispanic	41	25	66
Unidentified	13	6	19
White	30	24	54
Total BSC	347	269	616
UTHealth Houston			
Am. Indian	10	5	15
Asian	606	344	950
Black	1,493	400	1,893
Hawaiian	8	4	12
Hispanic	1,855	420	2,275
Unidentified	190	56	246
White	1,442	512	1,954
Grand Total	5,604	1,741	7,345

Administrative & Professional (A&P) Staff by Race/Ethnicity & Gender *Fall 2022*

source: PeopleSoft HCM, as of October 1, 2022

Note: Totals include both Management and General A&P; Academic A&P are included in faculty totals since incumbents must hold a faculty position in order to be eligible to serve in an Academic A&P role and are counted as faculty in the CBM008 certified faculty report to the THECB.

	Female	Male	Total
School of Biomedical Informatics			
Asian	1	0	1
Black	2	0	2
Hispanic	2	0	2
White	2	2	4
Total SBMI	7	2	9
School of Dentistry			
Asian	8	1	9
Black	3	0	3
Hispanic	4	0	4
Unidentified	2	0	2
White	3	2	5
Total SOD	20	3	23
Graduate School of Biomedical Sciences			
Asian	2	0	2
Black	1	0	1
Hispanic	1	0	1
White	1	0	1
Total GSBS	5	0	5
McGovern Medical School			
Am. Indian	1		1
Asian	63	45	108
Black	34	10	44
Hispanic	32	26	58
Unidentified	19	13	32
White	90	69	159
Total MMS	239	163	402
Cizik School of Nursing			
Black	2	0	2
White	2	2	4
Total CSON	4	2	6

	Female	Male	Total
School of Public Health			
Black	1	0	1
Hispanic	0	1	1
White	2	1	3
Total SPH	3	2	5
University Administration			
Asian	3	3	6
Black	13	3	16
Hispanic	10	1	11
Unidentified	1	2	3
White	46	25	71
Total Admin	73	34	107
Texas Epidemic Public Health Institute			
Total TEPHI	0	0	0
Behavioral Sciences Campus			
Asian	1	0	1
Black	6	3	9
Unidentified	0	1	1
White	6	3	9
Total BSC	13	7	20
UTHealth Houston			
Am. Indian	1	0	1
Asian	78	49	127
Black	62	16	78
Hispanic	49	28	77
Unidentified	22	16	38
White	152	104	256
Grand Total	364	213	577

Employees by Employment Category *Fall 2019 – 2022*

source: PeopleSoft HCM, Certified CBM008 Faculty Report to the Texas Higher Education Coordinating Board, as of October 1, 2022

¹ A&P includes both Management and General Administrative and Professional staff; Academic A&P are included in faculty totals since incumbents must hold a faculty position in order to be eligible to serve in an Academic A&P role and are counted as faculty in the CBM008 certified faculty report to the THECB.

² Residents and fellows formerly paid through the Medical Foundation were made employees of the university in FY 2019.

Note: Totals do not include casual or student employees.

	2019	2020	2021	2022
School of Biomedical Informatics				
Faculty	43	43	42	50
A&P ¹	8	8	8	9
Classified	64	70	77	82
Residents ²	0	0	0	0
SBMI Total	115	121	127	

School of Dentistry				
Faculty	231	201	198	208
A&P ¹	9	12	20	23
Classified	230	223	198	237
Residents ²	21	10	20	21
SOD Total	491	446	436	489

Graduate School of Biomedical Sciences				
Faculty	0	0	0	2
A&P ¹	1	1	3	5
Classified	21	21	19	21
Residents ²	0	0	0	0
GSBS Total	22	22	22	28

McGovern Medical School				
Faculty	1,566	1,584	1,567	1,723
A&P ¹	279	332	327	402
Classified	3,533	3,963	4,253	4,855
Residents ²	1,144	1,166	1,193	1,216
MMS Total	6,522	7,045	7,340	8,196

Cizik School of Nursing				
Faculty	190	154	149	146
A&P ¹	6	5	6	6
Classified	87	90	89	145
Residents ²	0	0	0	0
CSON Total	283	249	244	297

School of Public Health				
Faculty	165	169	172	182
A&P ¹	6	3	4	5
Classified	329	472	424	480
Residents ²	7	4	4	4
SPH Total	507	648	604	671

	2019	2020	2021	2022
University Administration				
Faculty	3	5	5	13
A&P ¹	97	94	101	107
Classified	793	757	790	892
Residents ²	0	0	0	0
UA Total	893	856	896	1,012

Texas Epidemic Public Health Institute				
Faculty	-	-	-	0
A&P ¹	-	-	-	0
Classified	-	-	-	17
Residents ²	-	-	-	0
TEPHI Total	-	-	-	17

Behavioral Sciences Campus				
Faculty	0	0	0	0
A&P ¹	11	11	13	20
Classified	434	429	454	616
Residents ²	0	0	0	0
BSC Total	445	440	467	636

UTHealth Houston				
Faculty	2,198	2,156	2,133	2,324
A&P ¹	417	466	482	577
Classified	5,491	6,025	6,304	7,345
Residents ²	1,172	1,180	1,217	1,241
Grand Total	9,278	9,827	10,136	11,487

Budgeted Full-time Equivalent (FTE) Employees by Source of Funds *Fall 2022*

source: Scott Barnett, Accounting & Budget

Note: Totals do not include casual or student employees.

	Faculty	A&P	Classified	Total
School of Biomedical Informatics				
State Funds	11.43	5.61	28.49	45.53
Designated Funds	6.89	2.00	20.65	29.54
Contracts & Grant Funds	29.79	0.40	69.14	99.33
Current Restricted Funds	2.86	0.00	8.20	11.06
subtotal SBMI	50.97	8.01	126.48	185.46
School of Dentistry				
State Funds	128.40	6.50	173.58	308.48
Designated Funds	18.15	2.50	78.05	98.70
Contracts & Grant Funds	4.55	0.00	16.20	20.75
Current Restricted Funds	1.00	0.00	15.78	16.78
subtotal SOD	152.10	9.00	283.61	444.71
Graduate School of Biomedical Sciences				
State Funds	0.00	4.00	30.38	34.38
Designated Funds	0.00	0.00	57.50	57.50
Contracts & Grant Funds	0.10	0.00	7.12	7.22
Current Restricted Funds	0.15	0.00	3.50	3.65
subtotal GSBS	0.25	4.00	98.50	102.75
McGovern Medical School				
State Funds	190.25	28.83	516.98	736.06
Designated Funds	1,401.46	99.29	4,578.25	6,079.00
Contracts & Grant Funds	176.47	3.38	619.62	799.47
Current Restricted Funds	55.90	1.10	235.16	292.16
subtotal MMS	1,824.08	132.60	5,950.01	7,906.69
Cizik School of Nursing				
State Funds	91.85	5.49	45.46	142.80
Designated Funds	3.02	0.40	32.10	35.52
Contracts & Grant Funds	4.64	0.11	18.17	22.92
Current Restricted Funds	4.08	0.00	6.01	10.09
subtotal CSON	103.59	6.00	101.74	211.33
School of Public Health				
State Funds	75.27	4.00	194.21	273.48
Designated Funds	5.41	1.00	62.92	69.33
Contracts & Grant Funds	71.79	0.00	267.64	339.43
Current Restricted Funds	15.78	0.00	60.79	76.57
subtotal SPH	168.25	5.00	585.56	758.81

cont'd **Budgeted FTE Employees by Source of Funds** *Fall 2022*

	Faculty	A&P	Classified	Total
Texas Epidemic Public Health Institute				
State Funds	0.00	0.00	14.50	14.50
Designated Funds	0.00	0.00	2.00	2.00
Current Restricted Funds	0.00	0.00	0.50	0.50
subtotal TEPHI	0.00	0.00	17.00	17.00
Behavioral Sciences Campus				
State Funds	0.00	17.50	560.21	577.71
Current Restricted Funds	0.00	0.00	2.50	2.50
subtotal BSC	0.00	17.50	562.71	580.21
University Administration				
State Funds	1.52	52.50	501.36	555.38
Designated Funds	0.17	38.78	122.82	161.77
Contracts & Grant Funds	0.00	1.24	14.58	15.82
Current Restricted Funds	0.00	0.88	2.70	3.58
subtotal UA	1.69	93.40	641.46	736.55
All Other				
State Funds	0.00	5.50	96.00	101.50
Designated Funds	4.00	0.50	61.00	65.50
Auxiliary Enterprises	0.00	5.50	44.61	50.11
Contracts & Grants	0.00	0.00	2.00	2.00
subtotal Other	4.00	11.50	203.61	219.11
UTHealth Houston				
State Funds	498.72	129.93	2,161.17	2,789.82
Designated Funds	1,439.10	144.47	5,015.29	6,598.86
Contracts & Grant Funds	287.34	5.13	1,014.47	1,306.94
Current Restricted Funds	79.77	1.98	335.14	416.89
Auxiliary Enterprises	0.00	5.50	44.61	50.11
Grand Total	2,304.93	287.01	8,570.68	11,162.62

GSBS Faculty Membership by Institution *Fall 2013 - 2022*

source: Karen Weinberg, Graduate School of Biomedical Sciences

	2013	2014	2015	2016	2017	2018	2019	2020	2021	2022
UTHealth Houston										
School of Biomedical Informatics	2	2	2	3	5	6	7	7	7	7
School of Dentistry	4	5	7	7	8	8	8	8	12	11
McGovern Medical School	171	168	171	190	196	201	195	199	194	197
Cizik School of Nursing	0	0	0	0	0	0	0	0	0	0
School of Public Health	14	11	14	17	15	15	14	12	11	13
subtotal UTHealth Houston	191	186	194	217	224	230	224	226	224	228
UT MD Anderson Cancer Center	371	355	365	361	377	367	360	367	380	390
Texas A&M Institute of Biosciences & Tech	4	3	3	3	3	3	3	3	3	3
Other	2		3	4	4	3	1	5	4	0
Grand Total GSBS	568	544	565	585	608	603	588	601	611	621

Faculty Honors Fall 2022

sources: NAM and AAAS online member lists; Lisa Cain, PhD, School of Dentistry; Cathy Rozmus, PhD, RN, FNAP, FAAN, Cizik School of Nursing

National Academy of Medicine (formerly the IOM)

Lu Ann Aday, PhD (emerita)
Gerard Francisco, MD
Irma Gigli, PhD (emerita)

American Academy of Arts & Sciences

Irma Gigli, PhD (emerita)
Jacqueline T. Hecht, PhD
Vasanthi Jayaraman, PhD
Theresa M. Koehler, PhD
John Spudich, PhD

American Academy of Nursing

Jennifer Beauchamp, PhD, RN, FAAN
Maja Djukic, PhD, RN, FAAN
Joan Engebretson, DrPH, AHN-BC, RN, FAAN (emerita)
Deanna Grimes, DrPH, RN, FAAN (emerita)
Sandra Hanneman, PhD, RN, FAAN
Joanne Hickey, PhD, RN, FAAN, FCCM (emerita)
Constance Johnson, PhD, MS, RN, FAAN
Thomas A. Mackey, PhD, APRN-BC, FAAN, FAANP
Melanie McEwen, PhD, RN, CNE, ANEF, FAAN
Janet Meininger, PhD, RN, FAAN (emerita)
Elda Ramirez, PhD, RN, FNP-BC, ENP-BC, FAAN, FAANP, FAEN
Linda A. Roussel, PhD, RN, CNL, NEA-BC, FAAN
Cathy L. Rozmus, PhD, RN, FNAP, FAAN
Susan Ruppert, PhD, RN, FNP-C, ANP-BC, FCCM, FNAP, FAANP, FAAN
Diane Santa Maria, DrPH, MSN, RN, PHNA-BC, FAAN
Patricia Starck, DSN, RN, FAAN (Dean Emerita)
Geraldine Wood, PhD, RN, FAAN
Chao Hsing Yeh, PhD, RN, FAAN

American Association for the Advancement of Science

Zhiqiang An, PhD
Michael Blackburn, PhD (emeritus)
John Byrne, PhD
Carmen Dessauer, PhD
Mary Farach-Carson, PhD
Kathleen R. Gibson, DDS
Jacqueline T. Hecht, PhD
Samuel Kaplan, PhD (emeritus)
Theresa Koehler, PhD (emerita)
Michael Lorenz, PhD
Kevin Morano, PhD

American College of Dentists

Nikola Angelov, DDS, PhD
Dan Bentley, DDS
Gary R. Badger, DDS, MS
Douglas Bogan, DDS
Donald F. Cohen, DDS
Ralph A. Cooley, DDS
Jeryl English, DDS, MS
David Fray, DDS, MBA
Gary Frey, DDS
Fred A. Garrett, DDS, MS
Kathy Gibson, DDS
Randal M. Glenn, DDS
Arthur H. Jeske, DMD, PhD
Ronald Johnson, DDS, MS
Stephen A. Laman, DDS
S. Jerry Long, DDS
Scott R. Makins, DDS, MS
Karen F. Novak, DDS, MS, Ph.D
Kalu Ogbureke, BDS, MSc, DMSc, JD
Peggy A. O'Neill, DDS, PhD (emerita)
Joe Piazza, DDS
H. Philip Pierpont, DDS
June Sadowsky, DDS, MPH
Charles Streckfus, DDS, MA, FAAOM, FAGD
Ryan R. Vahdani, DDS, MHA, MAGD
John Valenza, DDS
Ben Warner, DDS, MD, MS
Jesse G. Welch, DDS
H. Clark Whitmire, Jr., DMD, JD
Mark Wong, BDS

International College of Dentists

Ronald Auvenshine, DDS, PhD
Gary R. Badger, DDS
Dan Bentley, DDS
Douglas Bogan, DDS
Shelley L. Canada, DDS
Robert Lee Clitheroe, DDS, PC
Donald F. Cohen, DDS
Scott Coleman, DDS
Richard Ronald Collins, DDS
Robert R. Debes, DDS
Jeryl D. English, DDS, MS
David F. Fray, DDS, MBA
Gary N. Frey, DDS
Leslie O. Fullerton, DDS, MSD
Kathy T. Gibson, DDS
Thomas C. Harrison, DDS
John F. Helfrick, DDS
Charles Hoopingarner, DDS
W. Kenneth Horwitz, DDS
David E. Jaramillo, DDS
Arthur H. Jeske, DMD, PhD
Cleverick D. Johnson, DDS, MS
Ronald Johnson, DDS
Sudarat Kiat-amnuay, DDS, MS
Timothy C. Kirkpatrick, DDS
Sheila H. Koh, DDS
Stephen Laman, DDS
Don Le, DDS
S. Jerry Long, DDS
Scott R. Makins, DDS, MS
Gargi Mukherji, DDS
Peggy A. O'Neill, DDS, PhD (emerita)
Joe Mike Piazza, DDS
H. Philip Pierpont, DDS
Victor A. Rodriguez, DDS
June Sadowsky, DDS, MPH
Renato M. Silva, DDS, MS, PhD
John D. Smith, Jr., DDS
Ryan R. Vahdani, DDS, MHA, MAGD
John A. Valenza, DDS
Ben F. Warner, DDS, MD, MS
Jesse "Jay" G. Welch, DDS

Finance & Philanthropy

Total Funds Operating Budget by Unit & Revenue Source	77
Total Funds Operating Budget by Revenue Source	78
Total Funds Operating Budget by NACUBO Function	79
State Funds Operating Budget	80
Endowment Trends	81
Voluntary Support	81
Faculty Endowment Status	82
Endowed Scholarships	82

Total Funds Operating Budget by Unit & Revenue Source FY 2019 - 2023

source: Scott Barnett, Accounting and Budget

	FY 2019	FY 2020	FY 2021	FY 2022	FY 2023
School of Biomedical Informatics					
State Funds	\$4,732,136	\$4,729,229	\$4,750,081	\$4,678,668	\$4,744,292
Designated Funds	11,137,516	10,600,572	7,038,245	9,780,152	11,079,905
Contract & Grant Funds	7,282,941	11,189,638	8,487,463	11,351,743	11,622,631
Current Restricted Funds	804,456	834,657	964,099	1,231,973	1,245,542
subtotal SBMI	\$23,957,049	\$27,354,096	\$21,239,888	\$27,042,536	\$28,692,370
School of Dentistry					
State Funds	\$25,577,797	\$26,372,420	\$25,411,689	\$26,659,389	\$27,808,771
Designated Funds	20,730,934	21,786,071	21,924,129	27,263,990	31,011,354
Contract & Grant Funds	4,088,651	2,975,232	2,631,878	1,803,494	3,089,157
Current Restricted Funds	2,305,012	2,151,646	2,007,711	1,979,972	2,068,592
subtotal SOD	\$52,702,394	\$53,285,369	\$51,975,407	\$57,706,845	\$63,977,874
Graduate School of Biomedical Sciences					
State Funds	\$4,411,908	\$1,934,913	\$2,049,526	\$2,050,380	\$2,203,891
Designated Funds	846,660	4,331,732	3,706,440	4,354,160	4,217,794
Contract & Grant Funds	1,204,042	1,248,108	1,601,167	1,650,627	1,496,291
Current Restricted Funds	1,025,019	974,738	1,067,714	1,101,623	943,165
subtotal GSBS	\$7,487,629	\$8,489,491	\$8,424,847	\$9,156,790	\$8,861,141
McGovern Medical School					
State Funds	\$51,332,003	\$51,832,003	\$51,941,423	\$55,095,823	\$55,685,067
Designated Funds	899,687,256	1,007,148,181	1,077,962,550	1,166,369,365	1,281,356,917
Contract & Grant Funds	108,718,252	122,594,556	131,267,307	136,965,482	145,887,463
Current Restricted Funds	50,371,475	79,781,473	82,847,955	92,358,380	95,670,760
subtotal MMS	\$1,110,108,986	\$1,261,356,213	\$1,344,019,235	\$1,450,789,050	\$1,578,600,207
Cizik School of Nursing					
State Funds	\$13,592,886	\$14,924,614	\$13,838,929	\$14,523,557	\$14,584,250
Designated Funds	9,901,783	10,995,024	11,827,346	12,855,492	13,497,991
Contract & Grant Funds	1,961,143	1,736,937	1,205,869	2,203,341	659,470
Current Restricted Funds	2,082,228	1,880,223	1,486,794	1,789,713	2,479,924
subtotal CSON	\$27,538,040	\$29,536,798	\$28,358,938	\$31,372,103	\$31,221,635
School of Public Health					
State Funds	\$18,665,740	\$19,498,274	\$18,244,433	\$21,759,139	\$22,948,302
Designated Funds	18,300,818	19,227,512	19,351,594	21,985,361	19,772,403
Contract & Grant Funds	30,784,632	32,534,024	30,898,342	67,368,727	60,882,317
Current Restricted Funds	10,802,829	10,444,556	8,130,725	7,496,039	7,340,202
subtotal SPH	\$78,554,019	\$81,704,366	\$76,625,094	\$118,609,266	\$110,943,224
Behavioral Sciences Campus					
State Funds	\$54,826,542	\$58,955,070	\$62,932,137	\$63,907,226	\$113,064,729
Designated Funds	988,423	1,006,335	839,461	763,293	1,384,944
Current Restricted Funds	73,565	75,523	107,884	76,355	78,892
subtotal BSC	\$55,888,530	\$60,036,928	\$63,879,482	\$64,746,874	\$114,528,565
Texas Epidemic Public Health Institute					
Designated Funds	-	-	-	-	\$365,000
Contract & Grant Funds	-	-	-	-	20,552,325
subtotal TEPHI	-	-	-	-	\$20,917,325
Administrative and Institutional Support					
State Funds	\$124,204,900	\$144,074,172	\$146,451,328	\$122,203,376	\$127,141,644
Designated Funds	85,343,920	83,002,182	81,069,486	79,817,121	91,463,553
Contract & Grant Funds	264,937	5,000,000	668,458	9,039,469	13,100,548
Auxiliary Enterprise Funds	25,644,949	24,692,052	20,231,839	25,268,542	25,429,951
Current Restricted Funds	3,362,314	6,819,057	2,604,790	6,056,990	4,615,821
subtotal Admin	\$238,821,020	\$263,587,463	\$251,025,901	\$242,385,498	\$261,751,517
UTHealth Houston					
State Funds	\$297,343,912	\$322,320,695	\$325,619,546	\$310,877,558	\$368,180,946
Designated Funds	1,046,937,310	1,158,097,609	1,223,719,251	1,323,188,934	1,454,149,861
Contract & Grant Funds	154,304,598	177,278,495	176,760,484	230,382,883	257,290,202
Current Restricted Funds	70,826,898	102,961,873	99,217,672	112,091,045	114,442,898
Auxiliary Enterprise Funds	25,644,949	24,692,052	20,231,839	25,268,542	25,429,951
Grand Total	\$1,595,057,667	\$1,785,350,724	\$1,845,548,792	\$2,001,808,962	\$2,219,493,858

Total Funds Operating Budget by Revenue Source *FY 2019 - 2023*

source: Scott Barnett, Accounting and Budget

	FY 2019	FY 2020	FY 2021	FY 2022	FY 2023
State Funds					
General Revenue	\$214,339,577	\$234,376,206	\$235,475,906	\$221,400,922	\$225,384,793
Estimated E&G Income					
Student Tuition and Fees	22,585,483	23,500,937	23,721,532	24,854,016	25,516,348
Interest on Time Deposits	2,594,675	2,778,597	2,928,216	2,959,998	2,210,000
Other Income					
Income from Patients	7,900,000	7,900,000	7,900,000	7,900,000	9,000,000
State/Federal Grants & Contracts	400,000	370,043	370,043	367,710	5,975,094
Tobacco Settlements	0	0	0	0	0
Behavioral Sciences Campus	49,524,177	53,394,912	55,223,849	53,394,912	100,094,711
Total State Funds	\$297,343,912	\$322,320,695	\$325,619,546	\$310,877,558	\$368,180,946
Designated Funds	\$1,046,937,310	\$1,158,097,609	\$1,223,719,251	\$1,323,188,934	\$1,454,149,861
Contract and Grant Funds	154,304,598	177,278,495	176,760,484	230,382,883	257,290,202
Current Restricted Funds	70,826,898	102,961,873	99,217,672	112,091,045	114,442,898
Auxiliary Enterprise Funds	25,644,949	24,692,052	20,231,839	25,268,542	25,429,951
Unexpended Plant Funds	0	0	0	0	0
Grand Total UTHHealth Houston	\$1,595,057,667	\$1,785,350,724	\$1,845,548,792	\$2,001,808,962	\$2,219,493,858

Total Funds Operating Budget by NACUBO Function FY 2019 - 2023

source: Scott Barnett, Accounting and Budget

	FY 2019	FY 2020	FY 2021	FY 2022	FY 2023
State Funds					
Instruction	\$100,711,769	\$101,963,841	\$102,869,309	\$108,078,594	\$111,130,340
Research	24,445,212	33,287,038	40,667,490	38,296,737	30,652,961
Public Service	95,052	98,115	99,739	206,801	105,364
Hospitals/Clinics	59,836,047	63,564,408	68,444,585	66,577,525	120,949,395
Academic Support	30,442,200	30,918,054	26,768,399	27,100,806	29,637,579
Sudent Services	2,636,543	2,733,377	2,469,742	2,975,112	3,119,244
Institutional Support	57,285,039	62,026,827	60,493,994	42,645,074	47,571,225
Operation & Maintenance of Plant	21,809,205	27,646,190	23,723,443	24,914,064	24,931,993
Scholarships & Fellowships	82,845	82,845	82,845	82,845	82,845
Total State Funds	\$297,343,912	\$322,320,695	\$325,619,546	\$310,877,558	\$368,180,946
Designated Funds					
Instruction	\$609,137,245	\$681,742,950	\$707,709,450	\$777,415,801	\$871,067,843
Research	29,611,639	33,257,251	25,405,642	34,246,184	43,985,800
Public Service	5,198,798	5,960,817	7,053,714	6,630,430	2,384,727
Hospitals/Clinics	296,635,549	327,541,520	372,473,120	380,409,329	402,554,568
Academic Support	30,336,655	32,257,171	36,572,027	39,572,138	42,198,035
Sudent Services	8,494,668	9,851,554	8,645,019	9,945,733	10,963,295
Institutional Support	45,650,616	49,688,739	47,834,969	54,776,377	59,882,532
Operation & Maintenance of Plant	18,175,123	13,633,494	13,885,534	16,061,913	17,961,095
Scholarships & Fellowships	3,697,017	4,164,113	4,139,776	4,131,029	3,151,966
Total Designated Funds	\$1,046,937,310	\$1,158,097,609	\$1,223,719,251	\$1,323,188,934	\$1,454,149,861
Contract & Grant Funds	\$154,304,598	\$177,278,495	\$176,760,484	\$230,382,883	\$257,290,202
Current Restricted Funds	70,826,898	102,961,873	99,217,672	112,091,045	114,442,898
Auxiliary Enterprise Funds	25,644,949	24,692,052	20,231,839	25,268,542	25,429,951
Unexpended Plant Funds					
Grand Total UHealth Houston	\$1,595,057,667	\$1,785,350,724	\$1,845,548,792	\$2,001,808,962	\$2,219,493,858

State Funds Operating Budget *FY 2019 - 2023*

source: Scott Barnett, Accounting and Budget

¹ Beginning in FY 2022, the State Funds Budget no longer includes Tuition Revenue Bond (TRB) debt retirement.

	FY 2019	FY 2020	FY 2021	FY 2022	FY 2023
Instruction and Academic Support					
School of Biomedical Informatics	\$2,343,831	\$2,792,447	\$2,326,079	\$3,141,491	\$3,340,197
School of Dentistry	21,700,866	22,882,802	21,131,240	21,978,374	22,321,543
Graduate School Biomedical Sciences	4,411,908	1,934,913	2,049,526	2,050,380	2,203,891
McGovern Medical School	34,239,725	35,453,179	35,550,939	34,342,287	37,634,974
Cizik School of Nursing	13,592,886	14,924,614	13,838,929	14,523,557	14,584,250
School of Public Health	14,114,369	14,678,804	13,021,028	16,921,491	17,517,225
Library	386,207	363,176	378,643	518,990	492,720
Organized Activities	1,745,968	1,731,743	1,789,681	1,470,917	1,449,841
Special Items - Instructional Support	3,618,837	3,626,552	4,102,191	3,499,392	3,978,075
subtotal I&AS	\$96,154,597	\$98,388,230	\$94,188,256	\$98,446,879	\$103,522,716
Research					
Research Enhancement	\$3,428,980	\$13,866,965	\$19,760,520	\$15,141,066	\$17,543,598
Special Items - Research	15,778,821	9,544,504	9,828,361	9,785,123	9,238,133
subtotal Research	\$19,207,801	\$23,411,469	\$29,588,881	\$24,926,189	\$26,781,731
Public Service					
Special items - Public Service	72,958	75,014	77,423	81,294	82,137
Health Care					
Patient Care Activities	\$45,987,882	\$49,789,718	\$53,027,074	\$54,354,090	\$103,347,265
Special Items - Health Care	3,898,133	3,932,312	4,112,477	3,929,758	3,707,086
subtotal Health Care	\$49,886,015	\$53,722,030	\$57,139,551	\$58,283,848	\$107,054,351
Institutional Support					
Institutional Support	\$34,596,144	\$39,178,709	\$38,408,448	\$39,443,798	\$39,942,650
Special Items - Institutional Support					
subtotal Institutional Support	\$34,596,144	\$39,178,709	\$38,408,448	\$39,443,798	\$39,942,650
Student Services					
Student Services	2,023,701	2,089,798	1,917,145	2,374,635	2,431,630
Staff Benefits					
Staff Benefits	57,278,632	61,773,352	64,214,902	65,268,507	66,254,169
Operation and Maintenance of Plant					
Operation and Maintenance of Plant	\$18,785,001	\$24,370,688	\$20,813,835	\$21,315,286	\$21,746,016
TRB Debt Retirement ¹	18,749,811	18,749,650	18,749,350	0	0
subtotal O&M of Plant	\$37,534,812	\$43,120,338	\$39,563,185	\$21,315,286	\$21,746,016
Scholarships and Fellowships					
Scholarships and Fellowships	82,845	82,845	82,845	82,845	82,845
E&G Capital Projects					
Capital Projects	506,407	478,910	438,910	654,277	282,701
Grand Total UTHealth Houston	\$297,343,912	\$322,320,695	\$325,619,546	\$310,877,558	\$368,180,946

Endowment Trends *FY 2013 - 2022*

source: Lisa Christison, Office of Development

As of August 31	Number of Endowments	Book Value	Market Value	Annual % Change in Book Value
2013	470	\$155,149,195.58	\$196,090,721.31	15.3%
2014	496	163,834,343.30	222,145,972.00	5.6%
2015	526	223,734,777.02	273,297,428.64	36.6%
2016	573	256,596,233.44	303,593,994.62	14.7%
2017	616	281,200,437.93	350,923,924.30	9.6%
2018	674	404,176,326.00	491,896,993.70	43.7%
2019	707	429,942,741.95	515,353,536.76	6.4%
2020	739	472,569,705.46	580,988,350.51	9.9%
2021	774	542,752,772.45	805,140,881.09	14.9%
2022	840	670,250,341.65	855,493,985.63	23.5%

Voluntary Support *FY 2018 - 2022*

source: Lisa Christison, Office of Development

Source of Cash Received	FY 2018	FY 2019	FY 2020	FY 2021	FY 2022
Alumni	\$1,752,609	\$961,698	\$1,233,125	\$2,234,110	\$1,019,059
Individual	17,015,196	19,905,654	12,041,659	33,885,508	28,436,216
Foundation	29,098,563	25,200,853	24,700,892	22,101,640	25,064,823
Corporation	2,417,038	2,886,117	3,935,326	3,084,434	2,397,067
Organization	6,198,638	9,393,146	6,597,947	23,594,673	5,717,655
Grand Total	\$56,482,044	\$58,347,468	\$48,508,949	\$84,900,365	\$62,634,820

Faculty Endowment Status *FY 2022*

source: Lisa Christison, Office of Development

Status as of August 31, 2022

Type of Faculty Endowment	Total Number	Number filled	Percent filled
Distinguished University Chair	14	13	93%
Distinguished Chair	53	41	77%
Chair	83	66	80%
Distinguished Professorship	49	40	82%
Professorship	84	68	81%
Faculty Fellowship	2	1	50%
Grand Total	285	229	80%

Endowed Scholarships *FY 2016 - 2022*

source: Lisa Christison, Office of Development

As of August 31	Number of Endowed Scholarships	Book Value	Market Value
2016	198	\$19,837,518.64	\$23,572,550.37
2017	210	22,894,153.42	29,786,791.77
2018	227	25,863,744.09	34,127,110.55
2019	252	35,735,181.28	43,347,777.18
2020	259	40,674,229.86	50,423,109.76
2021	271	48,529,904.99	72,143,925.03
2022	291	55,053,123.43	70,832,364.93

Physical Facilities

Capital Equipment Expenditures by Asset Category	85
Facilities Operating Expenditures (Owned)	86
Purchased Utilities	86
Space Inventory by Function	87
Space Inventory by Program	88

Capital Equipment Expenditures by Asset Category FY 2013 - 2022

source: Heidemarie Hellriegel and Sonia Aguilar, Capital Assets Management

Asset Category Description	FY 2013	FY 2014	FY 2015	FY 2016	FY 2017
Office equipment & furniture	\$2,963,310	\$6,915	\$19,137	\$71,535	\$60,808
Physical plant & police	226,622	404,117	195,308	345,267	1,211,526
Audio-visual & media production	335,594	759,303	229,481	197,846	213,209
Medical, lab, & research	4,103,540	4,609,153	7,415,587	7,617,539	7,813,742
Hospital & patient care	31,956	644,049	50,568	95,365	298,137
Instructional, teaching, & library	606,426	684,730	437,974	1,207,045	316,644
Data processing & computer related	7,106,156	8,914,029	8,465,693	6,399,759	9,501,088
Print shop	0	0	976,796	0	0
Food service	23,197	7,447	44,828	9,250	23,334
Recreational	0	0	0	0	0
Grand Total UTHealth Houston	\$15,396,800	\$16,029,744	\$17,835,374	\$15,943,606	\$19,438,486

Asset Category Description	FY 2018	FY 2019	FY 2020	FY 2021	FY 2022
Office equipment & furniture	\$29,397	\$13,106	\$5,599	\$8,734	\$0
Physical plant & police	571,231	322,979	194,617	432,221	501,826
Audio-visual & media production	433,520	1,611,675	705,519	392,436	160,107
Medical, lab, & research	11,675,633	7,084,665	6,151,127	5,985,350	8,488,946
Hospital & patient care	237,844	487,204	1,396,330	2,444,122	2,770,182
Instructional, teaching, & library	406,655	577,361	214,604	356,532	272,545
Data processing & computer related	14,401,667	10,103,874	10,568,513	39,953,211	6,134,770
Print shop	0	0	0	0	0
Food service	0	19,510	0	0	0
Recreational	19,476	34,494	0	0	322,451
Grand Total UTHealth Houston	\$27,775,422	\$20,254,866	\$19,236,309	\$49,572,606	\$18,650,827

Facilities Operating Expenditures (Owned) FY 2022

source: Addison Marshall, Facilities Planning & Engineering

Building	Purchased Utilities	Maintenance & Operation	Housekeeping	FY 2022 Total
Cyclotron Facility	\$26,493	\$46,020	\$5,168	\$77,681
McGovern Medical School	4,097,486	1,921,473	552,423	6,571,382
Operations Center	129,611	431,443	9,227	570,280
Reuel A. Stallones	836,456	517,818	159,708	1,513,982
University Center Tower	894,004	1,650,448	255,591	2,800,043
Regional Academic Health Center	75,708	163,087	36,648	275,443
Cizik School of Nursing	152,107	487,790	161,026	800,923
UT Professional Building	768,880	2,918,557	649,475	4,336,913
Sarofim Research Building	1,444,501	692,712	135,066	2,272,279
Medical School Expansion	1,706,584	601,290	110,813	2,418,687
Behavioral & Biomedical Sciences	966,593	445,502	137,672	1,549,767
School of Dentistry	1,173,067	764,485	374,348	2,311,901
Jesse Jones Library	275,752	838,528	157,634	1,271,914
Cooley Life Center	20,094	41,011	16,007	77,111
Grand Total UTHealth Houston	\$12,567,336	\$11,520,163.23	\$2,760,807	\$26,848,306

Purchased Utilities FY 2013 - 2022

source: Addison Marshall, Facilities Planning & Engineering

Figures include utilities costs for THI lease space as well as electricity, chilled water, steam, water, sewer, waste collection and natural gas for owned buildings exclusive of South Campus Housing and Recreation Center.

Year	Total Expenditures	Annual % change
FY 2013	\$15,933,556	-7.4%
FY 2014	16,094,284	1.0%
FY 2015	16,030,465	-0.4%
FY 2016	15,516,958	-3.2%
FY 2017	16,051,988	3.4%
FY 2018	14,402,039	-10.3%
FY 2019	13,792,606	-4.2%
FY 2020	12,579,216	-8.8%
FY 2021	12,278,641	-2.4%
FY 2022	12,567,336	2.4%

Space Inventory by Function FY 2013 - 2022

source: Bret Wandel, Facilities Planning & Engineering

¹ASF = Assignable Square Feet

	FY 2013	FY 2014	FY 2015	FY 2016	FY 2016
Classroom	95,767	95,526	93,742	94,267	104,817
Lab	514,385	511,232	510,441	505,524	495,615
Office	990,998	1,011,563	1,059,029	1,073,248	1,089,188
Study	34,505	28,771	28,666	56,299	53,678
Special Use	74,302	72,802	72,656	72,511	82,427
General Use	105,629	115,547	110,025	116,673	110,565
Support	1,269,093	1,270,780	1,374,932	1,378,613	1,437,460
Health Care	470,888	657,763	604,837	796,029	829,915
Residential	566,030	579,456	700,835	701,180	701,177
Vacant	23,073	15,954	19,097	46,778	34,592
Total ASF¹	4,144,671	4,359,395	4,574,260	4,841,120	4,939,432

	FY 2018	FY 2019	FY 2020	FY 2021	FY 2022
Classroom	108,720	115,388	118,550	118,824	116,088
Lab	500,145	499,551	506,317	504,331	499,261
Office	1,110,442	1,123,169	1,153,181	1,156,039	1,210,523
Study	50,948	50,111	42,010	42,654	41,947
Special Use	83,911	86,323	86,298	87,031	87,020
General Use	111,956	110,640	111,944	111,680	129,609
Support	1,282,285	1,291,093	1,289,336	1,289,847	1,284,466
Health Care	858,364	849,445	936,510	908,987	1,139,320
Residential	701,177	701,177	701,177	701,177	701,177
Vacant	26,832	38,100	13,350	13,347	11,060
Total ASF¹	4,834,780	4,864,997	4,964,673	4,933,917	5,220,469

Space Inventory by Program FY 2013 - 2022

source: Bret Wandel, Facilities Planning & Engineering

¹ASF = Assignable Square Feet

	FY 2013	FY 2014	FY 2015	FY 2016	FY 2017
Instruction	610,532	713,570	705,168	789,367	816,415
Research	616,472	623,567	637,984	632,133	649,040
Public Service	240,706	344,861	344,639	431,399	446,261
Academic Support	424,974	447,171	441,677	473,075	487,061
Student Service	1,279,131	1,292,653	1,266,994	1,264,790	1,261,884
Institutional Support	720,555	718,423	958,019	958,469	1,000,801
Physical Plant Operations	65,330	66,075	62,318	64,612	75,768
Independent Operations	163,899	137,121	138,364	180,496	167,610
Vacant	23,073	15,954	19,097	46,778	34,592
Total ASF¹	4,144,671	4,359,395	4,574,260	4,841,120	4,939,432

	FY 2018	FY 2019	FY 2020	FY 2021	FY 2022
Instruction	833,009	832,059	885,378	880,147	1,011,532
Research	662,826	664,434	664,110	684,365	678,386
Public Service	503,823	529,176	574,176	546,966	702,217
Academic Support	464,480	459,070	479,816	469,834	466,657
Student Service	1,177,016	1,176,680	1,176,879	1,173,087	1,174,005
Institutional Support	932,395	939,107	952,211	971,094	1,000,084
Physical Plant Operations	76,050	72,785	71,110	74,681	76,456
Independent Operations	158,349	153,587	147,643	120,397	100,072
Vacant	26,832	38,100	13,350	13,347	11,060
Total ASF¹	4,834,780	4,864,997	4,964,673	4,933,917	5,220,469