

Fact Book | **2025**

Editor's note

The *Fact Book* is truly a university-wide effort. We are personally indebted to the many departments and individuals who lend their time, expertise, and support year after year. Without them, this publication would cease to exist. We therefore wish to publicly acknowledge the efforts of all involved and especially thank the following:

Kevin A. Morano, PhD
Senior Vice President for Academic & Faculty Affairs

UTHealth Houston Office of Academic Administration
Deanne Hernandez, MPA
Diana Keosayian, EdD
Nesh Aqrabi

Also

Sonia Aguilar	Capital Assets Management
Scott Barnett	Accounting and Budget
April Bass	McGovern Medical School
Heather Beckles-Bright	Student Financial Services
Leslie Beckman	Office of Postdoctoral Affairs
Lisa Cain, PhD	School of Dentistry
Nguyen Cao	Graduate School of Biomedical Sciences
Lisa Christison	Office of Development
Melissa Ethington, PhD, RN	Cizik School of Nursing
Johnson George, PhD, MBA	McGovern Medical School
Joy Harrison, DNP, MSN, RN	Cizik School of Nursing
Yennie Jimenez	Student Financial Services
Kathleen Kreidler	Sponsored Projects Administration
Frank La	Sponsored Projects Administration
Addison Marshall	Facilities Planning & Engineering
Dana McDowelle, PhD	McGovern Medical School
Rose Hochner Nelson	Office of the President
Gail Nettles	Office of the President
Shalizeh Patel, DDS, MEd	School of Dentistry
Lois Pierson, CPA	Behavioral Sciences Campus
Brenda Powers	Office of the Registrar
Cathy Rozmus, PhD, RN	Cizik School of Nursing
Claire Singletary, MS, CGC	Graduate School of Biomedical Sciences
Robert Spears, PhD	School of Dentistry
Sue Thomey	Bursar's Office
Bret Wandel	Facilities Planning & Engineering
Christine Weaver, PhD	Office of Technology Management
Karen Weinberg	Graduate School of Biomedical Sciences
Tera Wright	Office of the Registrar

Deanne Hernandez, MPA
Associate Vice President, Institutional Research, Assessment & Accreditation
Editor, *Fact Book 2025*

Preface *Fact Book 2025*

The Office of Academic Administration is pleased to introduce the thirty-fifth edition of The University of Texas Health Science Center at Houston's (UTHealth Houston) annual *Fact Book*.

Data, where appropriate, align with:

- The university's Annual Financial Report;
- Certified Texas Higher Education Coordinating Board reports (enrollment, degrees conferred, faculty, medical residents);
- Performance Measures reported to the Legislative Budget Board (uncompensated charity care, medical outpatient clinical activity – visits); and/or
- Other State and UT System required reports (financial aid, research expenditures, facilities, philanthropy)

Most tables portray FY 2024 data, which covers the period of September 1, 2023 – August 31, 2024. Enrollment and employee figures are as of October 2024 and the executive organization chart is current as of press time.

Table titles will indicate the date(s) covered.

UTHealth Houston **Mission Statement**

As a comprehensive health science university, the mission of The University of Texas Health Science Center at Houston is to educate health science professionals, discover and translate advances in the biomedical and social sciences, and model the best practices in clinical care and public health.

We pursue this mission in order to advance the quality of human life by enhancing the diagnosis, treatment, and prevention of disease and injury, as well as promoting individual health and community well-being.

UTHealth Houston **Vision Statement**

Excellence above all in the quest to be an acknowledged leader in the collaboration to treat, cure and prevent the most common diseases of our time through education, research and clinical practice.

Please direct questions or comments regarding *Fact Book 2025* to:

UTHealth Houston Academic Administration
7000 Fannin, Suite 1420
Houston, Texas 77030

UCT 1420 (for intra-institutional mail)

713.500.3192 telephone

Deanne Hernandez, MPA
Associate Vice President for Institutional Research, Assessment & Accreditation
Fact Book Editor

The University of Texas Health Science Center at Houston is accredited by the Southern Association of Colleges and Schools Commission on Colleges (SACSCOC) to award baccalaureate, masters, doctoral, and professional degrees. Degree-granting institutions also may offer credentials such as certificates and diplomas at approved degree levels. Questions about the accreditation of The University of Texas Health Science Center at Houston may be directed in writing to the Southern Association of Colleges and Schools Commission on Colleges at 1866 Southern Lane, Decatur, GA 30033-4097, by calling (404) 679-4500, or by using information available on SACSCOC's website (www.sacscoc.org).

The University of Texas Health Science Center at Houston ("University") is committed to providing a working and learning environment free from discrimination and harassment. The University prohibits discrimination and/or harassment by any member of the University community on the basis of race, color, religion, sex (including pregnancy), gender, sexual orientation, national origin, age, disability, genetic information, gender identity or expression, veteran status or any other basis prohibited by law. No person shall be excluded from participation in, denied the benefits of, or be subject to discrimination under any program or activity sponsored or conducted by the University or any of its component entities on any basis prohibited by applicable law or University policy.

Table of Contents *Fact Book 2025*

Preface	3
The University of Texas Board of Regents	6
UTHealth Houston Executive Leadership	7
Education	9
Summary of Academic Programs & Accreditation	11
Headcount Enrollment by Full-time/Part-time Status	12
Headcount Enrollment by Residency	13
Headcount Enrollment by Race/Ethnicity	14
Headcount Enrollment by Level	16
Headcount Enrollment by Level, Race/Ethnicity & Gender	17
Headcount Enrollment by Academic Program	18
Full-time Equivalent (FTE) Student Enrollment	20
Graduate School of Biomedical Sciences Students by Institutional Affiliation	21
Postdoctoral Research Fellows	21
Licensure Examination Results	22
Degrees Conferred by School	23
Degrees Conferred by Academic Program	24
Degrees Conferred by Level & Race/Ethnicity	26
McGovern Medical School Graduating Class Specialty Choices	27
Profile of Medical Residents in ACGME Accredited Programs	28
School of Dentistry Residents & Postgraduate Students	29
Medical (MCAT) & Dental (DAT) Applicant Scores	30
Tuition & Fees	31
Student Financial Aid Profile	32
Total Student Financial Aid Awards by School	33
Total Student Financial Aid Awards by Major Program	34
Average Student Financial Aid Awards by School	35
Average Student Debt on Graduation	36
Total Graduates by School	37
Research	39
Research Expenditures by Unit	41
UT Health-Related Institutions Research Expenditures by Source	42
Trends in UT Health-Related Institutions Research Expenditures	42
Research Expenditures by Sponsoring Agency	43
Intellectual Property Activity	44
Grant Proposals by Unit & Type	45
Contract & Grant Awards by Unit & Type	46
Contract & Grant Awards by Source	48
NIH Awards by Unit	50
Federal Awards by Agency	51
Principal Investigators by Unit	51
Sponsored Project Activity Report	52

Patient Care	53
McGovern Medical School Outpatient Clinical Activity - Visits	55
Un-sponsored Medical & Dental Charity Care Provided by Faculty	55
School of Dentistry Clinical Activity: Patient Visits	56
School of Dentistry Clinical Activity: Patient Treatments	57
UT Health Services Patient Visits	58
Behavioral Sciences Campus Clinical Activity	58
Medical Practice Plan Summary of Operations	59
 Employees	 61
Faculty by Full-time/Part-time Status	63
Without Salary Faculty Appointments	63
Faculty by Race/Ethnicity & Gender	64
Faculty by Tenure Status & Gender	65
Classified Staff by Race/Ethnicity & Gender	66
Administrative & Professional (A&P) Staff by Race/Ethnicity & Gender	67
Employees by Employment Category	68
Graduate School of Biomedical Sciences Faculty Membership by Institutional Affiliation	70
Full-time Equivalent (FTE) Employees by Source of Funds	71
Faculty Honors	72
 Finance & Philanthropy	 73
Total Funds Operating Budget by Unit & Revenue Source	75
Total Funds Operating Budget by Revenue Source	76
Total Funds Operating Budget by NACUBO Function	77
State Funds Operating Budget	78
Endowment Trends	79
Voluntary Support	79
Faculty Endowment Status	80
Endowed Scholarships	80
 Physical Facilities	 81
Capital Equipment Expenditures by Asset Category	83
Facilities Operating Expenditures (Owned)	84
Purchased Utilities	84
Space Inventory by Function	85
Space Inventory by Program	86

The University of Texas Board of Regents

Source: <https://utsystem.edu/regents>

The Board of Regents, the governing body for The University of Texas System, is composed of nine members who are appointed by the Governor and confirmed by the Senate. Terms for Regents are scheduled for six years each and staggered so that three members' terms will usually expire on February 1 in odd-numbered years. In addition, the Governor appoints a Student Regent for a one-year term that expires on May 31.

Throughout the more than 100-year history of The U. T. System, the Board has been composed of dedicated and distinguished Texans who have been strong advocates of excellence in academic programs, scientific inquiry, and responsible public service.

Kevin P. Eltife, *Chairman*

Janiece Longoria, *Vice Chairman*

James C. "Rad" Weaver, *Vice Chairman*

Christina Melton Crain

Robert P. Gauntt

Jodie Lee Jiles

Nolan Perez, MD

Stewart W. Steadman

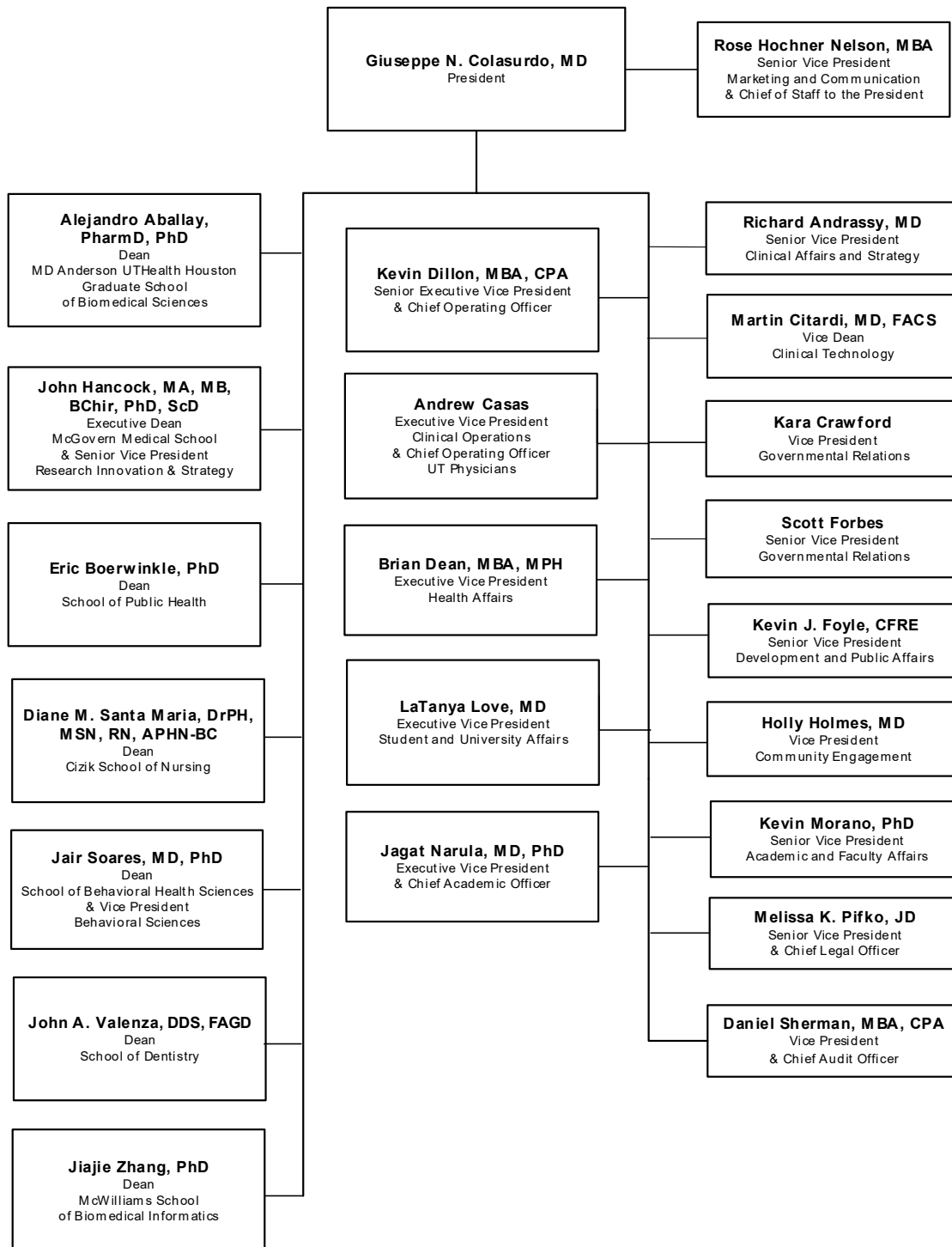
Kelcy L. Warren

Anthony John Dragun, *Student Regent*

Stacey Napier, General Counsel to the Board of Regents

UTHealth Houston Organization

Source: Rose Hochner Nelson, Office of the President



This page is intentionally blank

Education

Summary of Academic Programs & Accreditation	11
Headcount Enrollment by Full-time/Part-time Status	12
Headcount Enrollment by Residency	13
Headcount Enrollment by Race/Ethnicity	14
Headcount Enrollment by Level	16
Headcount Enrollment by Level, Race/Ethnicity & Gender	17
Headcount Enrollment by Academic Program	18
Full-time Equivalent (FTE) Student Enrollment	20
Graduate School of Biomedical Sciences Students by Institutional Affiliation	21
Postdoctoral Research Fellows	21
Licensure Examination Results	22
Degrees Conferred by School	23
Degrees Conferred by Academic Program	24
Degrees Conferred by Level & Race/Ethnicity	26
McGovern Medical School Graduating Class Specialty Choices	27
Profile of Medical Residents in ACGME Accredited Programs	28
School of Dentistry Residents & Postgraduate Students	29
Medical (MCAT) & Dental (DAT) Applicant Scores	30
Tuition & Fees	31
Student Financial Aid Profile	32
Total Student Financial Aid Awards by School	33
Total Student Financial Aid Awards by Major Program	34
Average Student Financial Aid Awards by School	35
Average Student Debt on Graduation	36
Total Graduates by School	37

Summary of Academic Programs & Accreditation

The University of Texas Health Science Center at Houston is accredited by the Southern Association of Colleges and Schools Commission on Colleges (SACSCOC) to award baccalaureate, masters, doctoral, and professional degrees. Degree-granting institutions also may offer credentials such as certificates and diplomas at approved degree levels. Questions about the accreditation of The University of Texas Health Science Center at Houston may be directed in writing to the Southern Association of Colleges and Schools Commission on Colleges at 1866 Southern Lane, Decatur, GA 30033-4097, by calling (404) 679-4500, or by using information available on SACSCOC's website (www.sacscoc.org).

The table below provides a comprehensive listing of each accrediting agency that reviews one or more UTHealth Houston academic programs.

	Agency	Last	Next
The University of Texas			
Health Science Center at Houston	SACSCOC	2021	2031 ¹
McWilliams School of Biomedical Informatics			
MS	CAHIIM	2019	2026
School of Dentistry			
DDS	CODA	2019	2027
BS (Dental Hygiene)	CODA	2019	2027
Certificate in Advanced Education Programs	CODA	2019	2027
Certificate in Dental Hygiene	CODA	2019	2027
Certificate in Oral & Maxillofacial Surgery	CODA	2021	2026
Certificate in Oral & Maxillofacial Pathology	CODA	2024	2031
MD Anderson Cancer Center UTHealth Houston Graduate School of Biomedical Sciences			
Certificate in Medical Physics	CAMPEP	2024	tbd ²
MS in Medical Physics	CAMPEP	2024	tbd ²
MS in Genetic Counseling	ACGC	2021	2029
McGovern Medical School			
MD	LCME	2019	2028
MS in Anesthesia	CAAHEP	2025	2030
Cizik School of Nursing			
BSN, MSN, DNP	CCNE	2021	2031
Nurse Anesthesia	CANAEP	2021	2032
School of Public Health			
MPH, MS, DrPH, PhD	CEPH	2019	2027

SACSCOC: Southern Association of Colleges & Schools Commission on Colleges

CAHIIM: Commission on Accreditation for Health Informatics and Information Management Education

CODA: Commission on Dental Accreditation (*federally-recognized*)

CAMPEP: Commission on Accreditation of Medical Physics Education Programs

ACGC: Accreditation Council for Genetic Counseling

LCME: Liaison Committee on Medical Education (*federally-recognized*)

CAAHEP: Commission on the Accreditation of Allied Health Education Programs

CCNE: Commission on Collegiate Nursing Education (*federally-recognized*)

CANAEP: Council on Accreditation of Nurse Anesthesia Educational Programs (*federally-recognized*)

CEPH: Commission on the Education of Public Health (*federally-recognized*)

¹ UTHealth Houston's Fifth Year Interim Report is due to SACSCOC in March 2027.

² CAMPEP extended the review date of the Medical Physics's programmatic accreditation report to late 2024; results of this review were not available as of press time.

Headcount Enrollment by Full-time/Part-time Status *Fall 2020-2024*

Sources: Brenda Powers and Tera Wright, Office of the Registrar
CBM001 Certified Enrollment Report to the Texas Higher Education Coordinating Board, October 2024

Note: Per THECB guidelines, students living outside of Texas and enrolled in an online program are not included in the enrollment counts for formula funding purposes. In Fall 2024, this represents a total of forty-one (41) students enrolled at McWilliams School of Biomedical Informatics (35) and the School of Public Health (6) who are excluded from this and all subsequent enrollment tables.

	Fall 2020		Fall 2021		Fall 2022		Fall 2023		Fall 2024	
	Number	Percent	Number	Percent	Number	Percent	Number	Percent	Number	Percent
McWilliams School of Biomedical Informatics										
Full-time	65	22%	102	31%	102	29%	110	29%	106	30%
Part-time	225	78%	226	69%	253	71%	266	71%	249	70%
MSBMI Total	290		328		355		376		355	
School of Dentistry										
Full-time	555	97%	549	96%	545	96%	564	99%	563	99%
Part-time	19	3%	24	4%	24	4%	6	1%	3	1%
UTSD Total	574		573		569		570		566	
Graduate School of Biomedical Sciences										
Full-time	413	86%	424	91%	435	92%	449	92%	462	93%
Part-time	67	14%	41	9%	38	8%	40	8%	37	7%
GSBS Total	480		465		473		489		499	
McGovern Medical School										
Full-time	982	88%	963	89%	973	90%	967	90%	1,025	91%
Part-time	134	12%	118	11%	113	10%	107	10%	107	9%
MMS Total	1,116		1,081		1,086		1,074		1,132	
Cizik School of Nursing										
Full-time	692	42%	705	44%	641	51%	508	48%	516	50%
Part-time	945	58%	897	56%	618	49%	559	52%	518	50%
CSON Total	1,637		1,602		1,259		1,067		1,034	
School of Public Health										
Full-time	793	52%	891	52%	798	51%	700	48%	685	51%
Part-time	721	48%	818	48%	780	49%	768	52%	658	49%
SPH Total	1,514		1,709		1,578		1,468		1,343	
UTHealth Houston Total										
Full-time	3,500	62%	3,634	63%	3,494	66%	3,298	65%	3,357	68%
Part-time	2,111	38%	2,124	37%	1,826	34%	1,746	35%	1,572	32%
Grand Total	5,611		5,758		5,320		5,044		4,929	

Headcount Enrollment by Residency *Fall 2015 - 2024*

Sources: Brenda Powers and Tera Wright, Office of the Registrar

CBM001 Certified Enrollment Report to the Texas Higher Education Coordinating Board, October 2024

	Fall 2015	Fall 2016	Fall 2017	Fall 2018	Fall 2019	Fall 2020	Fall 2021	Fall 2022	Fall 2023	Fall 2024
McWilliams School of Biomedical Informatics										
Texas Residents	198	234	247	217	217	245	263	290	288	307
Out of State	15	18	10	2	3	5	4	10	35	5
International	32	39	32	36	39	40	61	55	53	41
MSBMI Total	245	291	289	255	259	290	328	355	376	353
School of Dentistry										
Texas Residents	512	516	513	520	515	511	515	513	510	507
Out of State	26	28	36	36	52	49	43	43	35	34
International	10	16	16	14	12	14	15	13	25	25
UTSD Total	548	560	565	570	579	574	573	569	570	566
Graduate School of Biomedical Sciences										
Texas Residents	162	155	143	165	181	178	174	174	194	203
Out of State	124	121	125	127	118	118	107	109	101	103
International	151	149	138	162	181	184	184	190	194	193
GSBS Total	437	425	406	454	480	480	465	473	489	499
McGovern Medical School										
Texas Residents	937	954	965	964	950	957	935	940	941	1,001
Out of State	77	58	53	58	59	68	61	57	49	53
International	46	63	59	75	62	91	85	89	84	78
MMS Total	1,060	1,075	1,077	1,097	1,071	1,116	1,081	1,086	1,074	1,132
Cizik School of Nursing										
Texas Residents	1,222	1,450	1,611	1,698	1,604	1,614	1,583	1,235	1,054	1,021
Out of State	13	16	22	15	16	14	13	11	11	11
International	12	11	14	9	6	8	6	13	2	2
CSON Total	1,247	1,477	1,647	1,722	1,626	1,636	1,602	1,259	1,067	1,034
School of Public Health										
Texas Residents	875	882	945	940	999	1,217	1,314	1,162	1,055	951
Out of State	137	116	122	104	107	121	146	137	118	92
International	262	225	190	193	196	177	249	279	295	302
SPH Total	1,274	1,223	1,257	1,237	1,302	1,515	1,709	1,578	1,468	1,345
UTHealth Houston Total										
Texas Residents	3,906	4,191	4,424	4,504	4,466	4,722	4,784	4,314	4,042	3,990
Out of State	392	357	368	342	355	375	374	367	349	298
International	513	503	449	489	496	514	600	639	653	641
Grand Total	4,811	5,051	5,241	5,335	5,317	5,611	5,758	5,320	5,044	4,929

Headcount Enrollment by Race/Ethnicity *Fall 2020 - 2024*

Sources: Brenda Powers and Tera Wright, Office of the Registrar

CBM001 Certified Enrollment Report to the Texas Higher Education Coordinating Board, October 2024

Note (*pertains to all education tables that report race/ethnicity breakouts*):

Per federal guidelines, postsecondary educational institutions must report data using nine specified reporting categories, which include: Nonresident aliens (for whom neither race nor ethnicity is reported), Hispanic/Latino of any race, for individuals who are non-Hispanic/Latino: American Indian or Alaska Native, Asian, Black or African American, Native Hawaiian or Other Pacific Islander, White, Two or more races, and Race and Ethnicity Unknown.

	Fall 2020		Fall 2021		Fall 2022		Fall 2023		Fall 2024	
	Number	Percent	Number	Percent	Number	Percent	Number	Percent	Number	Percent
McWilliams School of Biomedical Informatics										
American Indian	1	0%	1	0%	2	1%	3	1%	1	0%
Asian	57	20%	62	19%	63	18%	54	14%	73	21%
Black	38	13%	27	8%	31	9%	43	11%	37	10%
Hispanic	48	17%	48	15%	62	18%	65	17%	71	20%
International	51	18%	73	22%	73	21%	73	19%	60	17%
Multi-Racial	5	2%	4	1%	5	1%	7	2%	12	3%
Pacific Islander	0	0%	0	0%	0	0%	0	0%	0	0%
Unidentified	17	6%	24	7%	28	8%	45	12%	37	10%
White	73	25%	88	27%	89	25%	86	23%	64	18%
MSBMI Total	290		327		353		376		355	
School of Dentistry										
American Indian	1	0%	0	0%	1	0%	2	0%	1	0%
Asian	178	31%	169	29%	174	31%	171	30%	182	32%
Black	28	5%	25	4%	23	4%	24	4%	25	4%
Hispanic	101	18%	103	18%	106	19%	100	18%	104	18%
International	16	3%	15	3%	18	3%	17	3%	15	3%
Multi-Racial	16	3%	20	3%	17	3%	17	3%	14	2%
Pacific Islander	1	0%	1	0%	0	0%	0	0%	1	0%
Unidentified	17	3%	36	6%	34	6%	28	5%	17	3%
White	216	38%	204	36%	196	34%	211	37%	207	37%
UTSD Total	574		573		569		570		566	
Graduate School of Biomedical Sciences										
American Indian	1	0%	1	0%	0	0%	0	0%	0	0%
Asian	51	11%	44	9%	42	9%	46	9%	42	8%
Black	19	4%	23	5%	23	5%	27	6%	26	5%
Hispanic	41	9%	42	9%	55	12%	57	12%	61	12%
International	187	39%	184	40%	196	41%	202	41%	210	42%
Multi-Racial	7	1%	9	2%	8	2%	10	2%	7	1%
Unidentified	27	6%	24	5%	24	5%	25	5%	33	7%
White	147	31%	138	30%	125	26%	122	25%	120	24%
GSBS Total	480		465		473		489		499	
McGovern Medical School										
American Indian	4	0%	3	0%	2	0%	0	0%	0	0%
Asian	232	21%	246	23%	265	24%	283	26%	335	30%
Black	69	6%	73	7%	75	7%	75	7%	82	7%
Hispanic	160	14%	150	14%	146	13%	157	15%	162	14%
International	82	7%	76	7%	83	8%	79	7%	75	7%
Multi-Racial	32	3%	32	3%	32	3%	29	3%	30	3%
Unidentified	58	5%	57	5%	38	3%	33	3%	37	3%
White	479	43%	444	41%	445	41%	418	39%	411	36%
MMS Total	1,116		1,081		1,086		1,074		1,132	

continued **Headcount Enrollment by Race/Ethnicity Fall 2019 - 2024**

	Fall 2020		Fall 2021		Fall 2022		Fall 2023		Fall 2024	
	Number	Percent	Number	Percent	Number	Percent	Number	Percent	Number	Percent
Cizik School of Nursing										
American Indian	1	0%	1	0%	0	0%	0	0%	0	0%
Asian	325	20%	336	21%	269	21%	206	19%	206	20%
Black	332	20%	318	20%	250	20%	230	22%	230	22%
Hispanic	349	21%	360	22%	296	24%	262	25%	248	24%
International	23	1%	19	1%	10	1%	8	1%	5	0%
Multi-Racial	49	3%	40	2%	29	2%	26	2%	29	3%
Pacific Islander	1	0%	4	0%	1	0%	1	0%	1	0%
Unidentified	25	2%	21	1%	41	3%	28	3%	23	2%
White	532	32%	503	31%	363	29%	306	29%	292	28%
CSON Total	1,637		1,602		1,259		1,067		1,034	
School of Public Health										
American Indian	2	0%	2	0%	1	0%	0	0%	1	0%
Asian	234	15%	279	16%	253	16%	259	18%	236	18%
Black	190	13%	218	13%	178	11%	168	11%	145	11%
Hispanic	309	20%	390	23%	338	21%	284	19%	266	20%
International	201	13%	281	16%	311	20%	323	22%	321	24%
Multi-Racial	42	3%	32	2%	24	2%	23	2%	26	2%
Pacific Islander	1	0%	1	0%	1	0%	1	0%	1	0%
Unidentified	80	5%	76	4%	74	5%	62	4%	43	3%
White	455	30%	430	25%	398	25%	348	24%	304	23%
SPH Total	1,514		1,709		1,578		1,468		1,343	
UTHealth Houston Total										
American Indian	10	0%	8	0%	6	0%	5	0%	3	0%
Asian	1,077	19%	1,136	20%	1,066	20%	1,019	20%	1,074	22%
Black	676	12%	684	12%	580	11%	567	11%	545	11%
Hispanic	1,008	18%	1,093	19%	1,003	19%	925	18%	912	19%
International	560	10%	648	11%	691	13%	702	14%	686	14%
Multi-Racial	151	3%	137	2%	115	2%	112	2%	118	2%
Pacific Islander	3	0%	6	0%	2	0%	2	0%	3	0%
Unidentified	224	4%	238	4%	239	4%	221	4%	190	4%
White	1,902	34%	1,807	31%	1,616	30%	1,491	30%	1,398	28%
Grand Total	5,611		5,757		5,318		5,044		4,929	

Headcount Enrollment by Level *Fall 2017 - 2024*

Sources: Brenda Powers and Tera Wright, Office of the Registrar
CBM001 Certified Enrollment Report to the Texas Higher Education Coordinating Board, October 2024

	Fall 2017	Fall 2018	Fall 2019	Fall 2020	Fall 2021	Fall 2022	Fall 2023	Fall 2024
McWilliams School of Biomedical Informatics								
Graduate	156	140	157	216	266	280	298	292
Certificate	130	109	100	72	62	72	77	58
Non-degree	3	6	2	2	0	3	1	5
MSBBI Total	289	255	259	290	328	355	376	355
School of Dentistry								
Undergraduate	65	72	80	69	54	48	46	47
Undergraduate Certificate	14	4	2	7	8	10	13	11
Graduate	36	37	30	31	45	61	46	23
Professional	406	412	418	418	422	419	422	424
Post Graduate Certificate	44	45	49	49	44	31	43	61
UTSD Total	565	570	579	574	573	569	570	566
Graduate School of Biomedical Sciences								
Graduate	392	407	431	430	432	444	462	467
Certificate	0	0	3	3	12	19	21	23
Non-degree	14	47	46	47	21	10	6	9
GSBS Total	406	454	480	480	465	473	489	499
McGovern Medical School								
Graduate	14	13	15	11	11	17	7	37
Certificate	91	95	80	118	104	95	94	94
Non-degree	5	5	2	8	4	2	7	11
Professional	967	984	974	979	962	972	966	990
MMS Total	1,077	1,097	1,071	1,116	1,081	1,086	1,074	1,132
Cizik School of Nursing								
Undergraduate	629	641	589	611	623	496	401	412
Graduate	945	1,002	948	941	897	727	626	598
Non-degree	73	79	89	85	82	36	40	24
CSON Total	1,647	1,722	1,626	1,637	1,602	1,259	1,067	1,034
School of Public Health								
Graduate	1,109	1,105	1,144	1,375	1,584	1,481	1,379	1,266
Certificate	117	108	131	112	106	80	72	66
Non-degree	31	24	27	27	19	17	17	11
SPH Total	1,257	1,237	1,302	1,514	1,709	1,578	1,468	1,343
UTHealth Houston Total								
Undergraduate	694	713	669	680	677	544	447	459
Undergraduate Certificate	14	4	2	7	8	10	13	11
Graduate	2,652	2,704	2,725	3,004	3,235	3,010	2,818	2,683
Professional	1,373	1,396	1,392	1,397	1,384	1,391	1,388	1,414
Post Graduate Certificate	44	45	49	49	44	31	43	61
Certificate	338	312	314	305	284	266	264	241
Non-degree	126	161	166	169	126	68	71	60
Grand Total	5,241	5,335	5,317	5,611	5,758	5,320	5,044	4,929

Headcount Enrollment by Level, Race/Ethnicity & Gender *Fall 2024*

Sources: Brenda Powers and Tera Wright, Office of the Registrar

CBM001 Certified Enrollment Report to the Texas Higher Education Coordinating Board, October 2024

School/Level	Asian		Black		Internation'l		Hispanic		American Indian		White		Unidentified		Pacific Islander		Multi-Racial		Grand Total		
	M	F	M	F	M	F	M	F	M	F	M	F	M	F	M	F	M	F	M	F	Total
McWilliams School of Biomedical Informatics																					
Non-Degree	1	1	0	0	0	1	0	0	0	0	1	0	0	1	0	0	0	0	2	3	5
Certificate	0	13	1	8	1	1	7	10	0	0	2	6	4	3	0	0	0	2	15	43	58
Graduate	21	37	11	17	26	31	21	33	0	1	23	32	13	16	0	0	2	8	117	175	292
Total MSBMI	22	51	12	25	27	33	28	43	0	1	26	38	17	20	0	0	2	10	134	221	355
School of Dentistry																					
1st Year Dental	17	30	1	2	0	0	5	13	0	0	14	22	0	1	0	0	0	1	37	69	106
2nd Year Dental	11	23	1	5	0	0	7	8	0	0	15	30	2	2	0	0	2	0	38	68	106
3rd Year Dental	9	26	2	2	0	0	9	13	1	0	13	26	1	2	0	0	2	1	37	70	107
4th Year Dental	9	22	0	0	0	0	5	16	0	0	28	17	2	2	0	0	2	2	46	59	105
Total UTSD - DDS	46	101	4	9	0	0	26	50	1	0	70	95	5	7	0	0	6	4	158	266	424
School of Dentistry - Academic																					
Graduate	0	3	0	0	3	1	0	2	0	0	3	5	0	3	0	0	0	1	6	15	21
Post Graduate Certificate	2	11	1	4	5	4	4	0	0	0	11	17	0	1	1	0	1	1	25	38	63
Undergraduate Certificate	1	3	0	4	0	0	0	2	0	0	0	1	0	0	0	0	0	0	1	10	11
Undergraduate	2	13	1	2	0	2	4	16	0	0	0	5	0	1	0	0	0	1	7	40	47
Total UTSD Academic	5	30	2	10	8	7	8	20	0	0	14	28	0	5	1	0	1	3	39	103	142
Graduate School of Biomedical Sciences																					
Non-Degree	0	0	0	0	3	2	0	0	0	0	2	1	0	1	0	0	0	0	5	4	9
Certificate	0	1	2	3	2	2	1	5	0	0	0	4	2	1	0	0	0	0	7	16	23
Graduate	16	25	4	17	76	125	21	34	0	0	41	72	4	25	0	0	2	5	164	303	467
Total GSBS	16	26	6	20	81	129	22	39	0	0	43	77	6	27	0	0	2	5	176	323	499
McGovern Medical School																					
1st Year Medical	34	50	6	15	0	0	10	19	0	0	46	52	1	2	0	0	4	5	101	143	244
2nd Year Medical	38	46	7	10	1	0	20	17	0	0	42	47	1	3	0	0	2	4	111	127	238
3rd Year Medical	36	43	5	11	0	0	22	14	0	0	44	57	3	3	0	0	8	4	118	132	250
4th Year Medical	34	38	9	13	0	0	25	25	0	0	48	51	8	4	0	0	0	3	124	134	258
Total MMS - MD	142	177	27	49	1	0	77	75	0	0	180	207	13	12	0	0	14	16	454	536	990
McGovern Medical School - Academic																					
Non-Degree	1	1	0	2	0	0	0	1	0	0	1	5	0	0	0	0	0	0	2	9	11
Certificate	0	1	1	1	32	42	0	2	0	0	8	4	0	3	0	0	0	0	41	53	94
Graduate	4	9	1	1	0	0	1	6	0	0	2	4	3	6	0	0	0	0	11	26	37
Total MMS - Academic	5	11	2	4	32	42	1	9	0	0	11	13	3	9	0	0	0	0	54	88	142
Cizik School of Nursing																					
Non-Degree	3	1	0	2	0	0	3	2	0	0	1	11	0	0	0	0	0	1	7	17	24
Undergraduate	26	77	8	54	1	0	16	118	0	0	16	72	1	4	0	1	3	15	71	341	412
Graduate	21	78	15	151	0	4	16	93	0	0	26	166	3	15	0	0	1	9	82	516	598
Total CSON	50	156	23	207	1	4	35	213	0	0	43	249	4	19	0	1	4	25	160	874	1,034
School of Public Health																					
Non-Degree	1	2	0	0	0	0	1	3	0	0	1	3	0	0	0	0	0	0	3	8	11
Certificate	3	17	1	9	0	1	2	13	0	1	1	11	0	3	0	0	1	3	8	58	66
Graduate	60	153	29	106	111	209	63	184	0	0	63	225	11	29	0	1	1	21	338	928	1,266
Total SPH	64	172	30	115	111	210	66	200	0	1	65	239	11	32	0	1	2	24	349	994	1,343
Grand Total	350	724	106	439	261	425	263	649	1	2	452	946	59	131	1	2	31	87	1,524	3,405	4,929

Headcount Enrollment by Academic Program *Fall 2024*

Sources: Brenda Powers and Tera Wright, Office of the Registrar

CBM001 Certified Enrollment Report to the Texas Higher Education Coordinating Board, October 2024

McWilliams School of Biomedical Informatics		Graduate School of Biomedical Sciences, cont'd		McGovern Medical School	
Non-degree Certificate Biomedical Informatics	5	Epigenetics & Molecular Carcinogenesis	0	Doctor of Medicine (MD)	990
Certificate	58	Human & Molecular Genetics	0	MS in Anesthesia	35
MS in Biomedical Informatics	223	Quantitative Sciences	0	MS in Clinical Research	2
PhD in Biomedical Informatics	46	Biostatistics, Bioinformatics & Systems Biology	0	Non-degree Clinical Research	11
Doctorate of Health Informatics (DHI)	23	Microbiology & Infectious Diseases	0	Post-doctoral Certificate	94
		Microbiology & Molecular Genetics	0		
School of Dentistry		Therapeutics & Pharmacology	0	Cizik School of Nursing	
Doctor of Dental Surgery (DDS)	424	Immunology	0	Bachelor of Science in Nursing (BSN)	412
<u>Master of Science in Dentistry (MSD)</u>		Neuroscience	0	<u>Master of Science in Nursing (MSN)</u>	
Pediatric Dentistry	0	<u>Specialized Master of Science (SMS)</u>		Nurse Practitioner	
Orthodontics	0	Genetic Counseling	20	Adult/Gerontology Acute Care	7
Endodontics	5	Medical Physics	4	Adult/Gerontology Primary Care	0
Prosthodontics	6	<u>Doctor of Philosophy (PhD)</u>		Emergency/Trauma	0
Periodontics	7	Biomedical Sciences	119	Family Nurse Practitioner	147
<u>Dental Postgraduate Certificate</u>		Medical Physics	33	Psychiatric Mental Health	0
Adv. Ed. in General Dentistry (AEGD)	6	Molecular & Translational Biology	0	Nursing Education	0
General Practice Residency (GPR)	7	Biochemistry & Molecular Biology	1	Nursing Leadership & Admin.	36
Endodontics	5	Cell & Regulatory Biology	0	Post Master Non-degree	
Oral and Maxillofacial Pathology	2	Cancer Biology	53	Emergency/Trauma	16
Orthodontics	14	Clinical & Translational Sciences	0	Nursing Education	3
Pediatric Dentistry	16	Therapeutics & Pharmacology	8	Family Nurse Practitioner	3
Periodontics	4	Genetics & Epigenetics	36	Adult/Gero Acute Care	2
Prosthodontics	9	Genes & Development	0	<u>BSN - DNP Nurse Practitioner (DNP)</u>	
Master of Science Dental Hygiene (MSDH)	2	Epigenetics & Molecular Carcinogenesis	0	Nurse Anesthesia	82
Certificate in Dental informatics	1	Human & Molecular Genetics	0	Adult/Gerontology Acute Care	53
Bachelor of Science Dental Hygiene (BSDH)	47	Immunology	47	Adult/Gerontology Primary Care	10
Certificate in Dental Hygiene	11	Microbiology & Infectious Diseases	14	Informatics	4
		Microbiology & Molecular Genetics	0	Family Nurse Practitioner	99
Graduate School of Biomedical Sciences		Neuroscience	26	Nursing Leadership & Admin.	26
<u>Master of Science (MS)</u>		Quantitative Sciences	38	Psychiatric Mental Health	74
Biomedical Sciences	52	Biostatistics, Bioinformatics & Systems Biology	0	Doctor in Nursing Practice (DNP)	26
Molecular & Translational Biology	0	Molecular & Translational Biology	16	Doctor of Philosophy in Nursing (PhD)	31
Biochemistry and Molecular Biology	0			BSN - PhD Doctor of Philosophy in Nursing (PhD)	3
Cell and Regulatory Biology	0				
Cancer Biology	0				
Clinical & Translational Sciences	0				
Genetics & Epigenetics	0				
Genes & Development	0				
Non-degree	9				
Certificate	23				

continued **Headcount Enrollment by Academic Program Fall 2024**

School of Public Health

Master of Public Health (MPH)

Austin

Epidemiology	31
Health Promotion/Health Education	16
Public Health	44

Brownsville

Epidemiology	4
Health Promotion/Health Education	2
Public Health	3

Dallas

Epidemiology	13
Health Promotion/Health Education	2
Public Health	23

El Paso

Environmental Health	3
Health Promotion/Health Education	2
Health Care Management	11
Public Health	9
Public Health (MD/MPH El Paso)	7

San Antonio

Community Health Practice	
Environmental Health	4
Epidemiology	9
Health Promotion/Health Education	5
Public Health	45

Houston

Biostatistics	
Community Health Practice	30
Environmental Health	29
Epidemiology	198
Health Promo & Behavioral Sciences	22
Health Promotion/Health Education	48
Health Services Organization	15
Healthcare Management	83
Public Health	15
Social Work	1

Master of Science (MS)

Austin

Epidemiology	0
--------------	---

Brownsville

Epidemiology	0
--------------	---

Dallas

Epidemiology	0
--------------	---

San Antonio

Biostatistics	0
Epidemiology	0

Houston

Biostatistics	47
Epidemiology	0
Environmental Sciences	0

Doctor of Public Health (DrPH)

Austin

Health Promotion/Health Education	5
-----------------------------------	---

Brownsville

Health Promotion/Health Education	8
-----------------------------------	---

Dallas

Health Promotion/Health Education	6
-----------------------------------	---

El Paso

Health Promotion/Health Education	4
-----------------------------------	---

San Antonio

Community Health Practice	2
Environmental Health	1

Houston

Community Health Practice	26
Health Promotion/Health Education	24
Health Services Organizations	
Environmental Health	

Doctor of Philosophy (PhD)

Austin

Behavioral Sciences and Health Promotion	20
Epidemiology	19

Brownsville

Epidemiology	5
--------------	---

Dallas

Behavioral Sciences and Health Promotion	3
Epidemiology	10

El Paso

Environmental Sciences	
Total Worker Health	3
Environmental Disease Prevention	2
Health Promotion/Health Education	

San Antonio

Environmental Sciences	
Total Worker Health	2
Environmental Disease Prevention	0
Epidemiology	9

Houston

Behavioral Sciences and Health Promotion	47
Biostatistics	173
Environmental Sciences	1
Total Worker Health	7
Environmental Disease Prevention	12
Epidemiology	86
Management & Policy Sciences	50
Health Services Organizations	20
Health Promotion/Health Education	0
Non-Degree Certificate	11
Certificate	66

Grand Total 4,929

Full-time Equivalent (FTE) Student Enrollment *Fall 2015 - 2024*

Sources: Brenda Powers and Tera Wright, Office of the Registrar

	2015	2016	2017	2018	2019
McWilliams School of Biomedical Informatics	140.81	173.00	169.14	144.73	143.91
School of Dentistry	534.88	545.10	547.32	555.09	562.65
Graduate School of Biomedical Sciences	408.40	400.49	383.19	414.43	439.31
McGovern Medical School	1,009.56	1,004.44	1,006.22	1,012.83	1,000.11
Cizik School of Nursing	1,023.89	1,185.18	1,317.53	1,363.53	1,284.89
School of Public Health	958.03	932.17	949.39	945.00	979.45
Grand Total	4,075.57	4,240.38	4,372.79	4,435.61	4,410.32

	2020	2021	2022	2023	2024
McWilliams School of Biomedical Informatics	174.80	212.83	222.33	243.46	235.99
School of Dentistry	560.00	556.11	553.79	568.35	565.12
Graduate School of Biomedical Sciences	434.51	439.68	447.47	462.26	475.91
McGovern Medical School	1,009.34	997.79	1,006.56	1,000.83	1,060.46
Cizik School of Nursing	1,286.49	1,254.69	1,021.37	865.05	846.25
School of Public Health	1,186.33	1,416.60	1,224.52	1,111.42	1,036.65
Grand Total	4,651.47	4,877.70	4,476.04	4,251.37	4,220.38

GSBS Students by Institutional Affiliation *Fall 2015 - 2024*

Source: Karen Weinberg, Graduate School of Biomedical Sciences

¹ Other includes registered degree seeking students who have not formally chosen an advisor. It does not include non-degree students.

Note: Totals do not match to the Certified CBM001 Enrollment Report due to timing.

	Fall 2015	Fall 2016	Fall 2017	Fall 2018	Fall 2019	Fall 2020	Fall 2021	Fall 2022	Fall 2023	Fall 2024
UTHealth Houston										
School of Dentistry	0	0	1	2	3	4	4	4	4	4
McGovern Medical School	84	95	100	92	83	86	91	100	102	126
School of Public Health	0	0	2	4	2	0	0	0	0	0
McWilliams School of Biomedical Informatics	0	0	0	0	0	0	0	0	2	1
subtotal UTHealth Houston	84	95	103	98	88	90	95	104	108	131
UT MD Anderson Cancer Center	243	222	229	216	250	263	252	253	260	254
TAMU Institute of Biosciences and Technology	1	1	0	0	0	0	0	0	0	0
Other ¹	87	86	77	106	109	103	106	107	109	105
Grand Total GSBS	415	404	409	420	447	456	453	464	477	490

Postdoctoral Research Fellows *Fall 2015 - 2024*

Source: Leslie Beckman, Office of Postdoctoral Affairs

Fall	Total
2015	224
2016	239
2017	241
2018	230
2019	218
2020	222
2021	232
2022	212
2023	249
2024	320

Licensure Examination Results 2024

Sources: Robert Spears, PhD, School of Dentistry; Melissa D. Ethington, PhD, RN, Cizik School of Nursing; Dana McDowelle, PhD, McGovern Medical School; Claire Singletary, MS, CGC, Graduate School of Biomedical Sciences

2024 Dental and Dental Hygiene National Board and Licensure Exams

	Total Examined	Total Passed	Percent Passed
DDS INBDE	106	105	99%
Dental Hygiene National Board Exam	33	33	100%
CDCA/ADEX Clinical Licensure Exam			
DDS	105	103	98%
Dental Hygiene	33	33	100%

2022-2023 Texas State Board of Nursing Examiners Results

Note: Official 2023-2024 pass rates were not available as of press time.

	Total Examined	Total Passed	Percent Passed
NCLEX - RN	311	293	94.21%

2023-2024 United States Medical Licensing Examination (USMLE) Results

	Total Examined	Total Passed ³	Percent Passed
USMLE Step 1 ¹	230	-	91%
Clinical Knowledge Exam (Step 2) ²	241	-	99%

¹ Data based on interim Annual Report on Examinee Performance between from January 1, 2024 to September 14, 2024.

² Report presents overall and content areas for examinees from McGovern Medical School taking Step 2 CK of USMLE from July 1, 2021 to June 30, 2024.

³ THE NBME Summary Report no longer included data on the number of test takers who pass.

2024 American Board of Genetic Counseling Exam Results

	Total Examined	Total Passed	Percent Passed
ABGC (March 2024, first time takers)	5	3	60%
ABGC (August 2024, first time takers)	10	9	90%

Degrees Conferred by School FY 2017 - 2024

Sources: Brenda Powers and Tera Wright, Office of the Registrar
CBM009 Certified Graduation Report to the Texas Higher Education Coordinating Board, October 2024

Note: In all degree tables, Dental Post Graduate Certificates (PGCRT) totals include Advanced Education-General Dentistry (AEGD) and General Practice Residency (GPR) programs that are not reported to the Coordinating Board.

	FY 2017	FY 2018	FY 2019	FY 2020	FY 2021	FY 2022	FY 2023	FY 2024
McWilliams School of Biomedical Informatics								
Master's	48	59	48	44	52	66	75	80
Doctoral	4	6	3	2	2	7	18	11
Total MSBMI	52	65	51	46	54	73	93	91
School of Dentistry								
Bachelor's	36	36	35	39	41	26	26	21
Certificate	3	4	2	0	0	6	2	8
Master's	21	25	29	27	25	28	30	30
Post Graduate Certificate (PGCRT)	39	37	45	41	33	35	33	34
Professional	99	95	95	103	96	108	101	102
Total UTSD	198	197	206	210	195	203	192	195
Graduate School of Biomedical Sciences								
Master's	19	21	29	24	38	29	25	33
Doctoral	77	64	48	40	63	51	58	58
Total GSBS	96	85	77	64	101	80	83	91
McGovern Medical School								
Master's	0	12	0	6	11	1	10	0
Professional	231	222	243	242	238	231	240	226
Total MMS	231	234	243	248	249	232	250	226
Cizik School of Nursing								
Bachelor's	402	437	462	428	426	396	349	276
Master's	123	269	294	270	248	199	180	127
Doctoral	45	37	76	60	48	71	91	97
Total CSON	570	743	832	758	722	666	620	500
School of Public Health								
Master's	314	342	300	346	357	409	432	412
Doctoral	68	60	57	78	64	69	66	61
Total SPH	382	402	357	424	421	478	498	473
UTHealth Houston								
Bachelor's	438	473	497	467	467	422	375	297
Certificate	3	4	2	0	0	6	2	8
Master's	525	728	700	717	731	732	752	682
Doctoral	194	167	184	180	177	198	233	227
Post Graduate Certificate (PGCRT)	39	37	45	41	33	35	33	34
Professional	330	317	338	345	334	339	341	328
Grand Total	1,529	1,726	1,766	1,750	1,742	1,732	1,736	1,576

Degrees Conferred by Academic Program FY 2024

Sources: Brenda Powers and Tera Wright, Office of the Registrar

CBM009 Certified Graduation Report to the Texas Higher Education Coordinating Board, October 2024

Degrees Conferred Fall 2023, Spring 2024, Summer 2024

McWilliams School of Biomedical Informatics		Grad. School of Biomedical Sciences, cont'd		McGovern Medical School	
MS in Biomedical Informatics	80	Human & Molecular Genetics	0	Doctor of Medicine (MD)	226
PhD in Biomedical Informatics	7	Quantitative Sciences	0	MS in Clinical Research	0
Doctorate of Health Informatics (DHI)	4	Biostatistics, Bioinformatics & Sys. Bio.	0	MS in Anesthesia	0
		Microbiology & Infectious Diseases	0		
		Microbiology & Molecular Genetics	0		
School of Dentistry		Therapeutics & Pharmacology	0	Cizik School of Nursing	
Doctor of Dental Surgery (DDS)	102	Immunology	0	Bachelor of Science in Nursing (BSN)	276
<u>Master of Science in Dentistry (MSD)</u>		Neuroscience	0	<u>BSN - DNP Nurse Practitioner</u>	
Pediatric Dentistry	8			Informatics	8
Orthodontics	7	<u>Specialized Master of Science (SMS)</u>		Nurse Anesthesia	23
Endodontics	5	Genetic Counseling	10	Adult/Gerontology Acute Care	10
Prosthodontics	5	Medical Physics	3	Adult/Gerontology Primary Care	0
Periodontics	4	<u>Doctor of Philosophy (PhD)</u>		Family Nurse Practitioner	17
<u>Dental Postgraduate Certificate</u>		Biomedical Sciences	0	Leadership & Administration	15
Adv. Ed. in General Dentistry (AEGD)		Medical Physics	5	Psychiatric Mental Health	3
General Practice Residency (GPR)		Biochemistry & Cell Biology	0	<u>Master of Science in Nursing (MSN)</u>	
Endodontics	5	Biochemistry & Molecular Biology	0	Nurse Practitioner	
Oral and Maxillofacial Surgery	6	Cell & Regulatory Biology	0	Adult/Gerontology Acute Care	30
Orthodontics	7	Cancer Biology	16	Adult/Gerontology Primary Care	3
Pediatric Dentistry	8	Clinical & Translational Sciences	0	Family Nurse Practitioner	64
Periodontics	4	Therapeutics & Pharmacology	0	Psychiatric Mental Health	10
Prosthodontics	4	Genetics & Epigenetics	7	Nursing Education	0
Bachelor of Science Dental Hygiene (BSDH)	21	Genes & Development	0	Nursing Leadership & Administration	20
Certificate in Dental Hygiene	8	Epigenetics & Molecular Carcinogenesis	0	Doctor in Nursing Practice (DNP)	18
Master of Science in Dental Hygiene	1	Human & Molecular Genetics	0	Doctor of Philosophy in Nursing (PhD)	3
		Immunology	5		
		Microbiology & Infectious Diseases	5		
		Molecular & Translational Biology	3		
		Neuroscience	10		
		Quantitative Sciences	7		
		Biostatistics, Bioinformatics & Sys. Bio.	0		
Graduate School of Biomedical Sciences					
<u>Master of Science (MS)</u>					
Biomedical Sciences	20				
Biochemistry and Cell Biology	0				
Biochemistry and Molecular Biology	0				
Cell and Regulatory Biology	0				
Cancer Biology	0				
Clinical & Translational Sciences	0				
Genetics & Epigenetics	0				
Genes & Development	0				
Epigenetics & Molecular Carcinogenesis	0				

continued **Degrees Conferred by Academic Program FY 2024**

Degrees Conferred Fall 2023, Spring 2024, Summer 2024

School of Public Health

<u>Master of Public Health (MPH)</u>		<u>Doctor of Public Health (DrPH)</u>	
<i>Austin</i>	48	<i>Austin</i>	
Epidemiology	13	Health Promotion/Health Education	0
Health Promotion/Health Education	6	<i>Brownsville</i>	
Public Health	0	Health Promotion/Health Education	0
<i>Brownsville</i>		<i>Dallas</i>	
Epidemiology	1	Health Promotion/Health Education	0
Health Promotion/Health Education	0	<i>El Paso</i>	
Public Health	4	Health Promotion/Health Education	0
<i>Dallas</i>		<i>San Antonio</i>	
Epidemiology	16	Community Health Practice	0
Health Promotion/Health Education	0	<i>Houston</i>	
Public Health	31	Community Health Practice	2
<i>El Paso</i>		Health Promotion/Health Education	3
Healthcare Management	6	Environmental Health	1
Health Promotion/Health Education	0		
Public Health	2		
Public Health (MD/MPH El Paso)	7		
<i>San Antonio</i>		<u>Doctor of Philosophy (PhD)</u>	
Environmental Health	0	<i>Austin</i>	
Epidemiology	6	Behavioral Sciences & Health Promotion	1
Health Promotion/Health Education	0	Epidemiology	4
Public Health	18	<i>Brownsville</i>	
<i>Houston</i>		Epidemiology	2
Biostatistics		<i>Dallas</i>	
Community Health Practice	18	Behavioral Sciences & Health Promotion	0
Environmental Health	11	Epidemiology	2
Epidemiology	86	<i>El Paso</i>	
Health Promotion/Health Education	47	Environmental Sciences	
Health Services Organization	6	Total Worker Health	1
Healthcare Management	43	Environmental Disease Prevention	0
Public Health	33	<i>San Antonio</i>	
		Environmental Sciences	
		Total Worker Health	0
		Environmental Disease Prevention	2
		Epidemiology	1
<u>Master of Science (MS)</u>		<i>Houston</i>	
<i>Austin</i>		Behavioral Sciences & Health Promotion	7
Epidemiology	0	Biostatistics	13
<i>Brownsville</i>		Environmental Sciences	
Epidemiology	0	Total Worker Health	0
<i>Dallas</i>		Environmental Disease Prevention	1
Epidemiology	1	Epidemiology	17
<i>San Antonio</i>		Health Services Organizations	0
Epidemiology	0	Healthcare Management & Health Policy	4
<i>Houston</i>			
Biostatistics	9		
Epidemiology	0		
Environmental Sciences	0		
		Grand Total	1,576

Degrees Conferred by Level & Ethnicity FY 2024

Sources: Brenda Powers and Tera Wright, Office of the Registrar

CBM009 Certified Graduation Report to the Texas Higher Education Coordinating Board, October 2024

	Race/Ethnicity									
	American Indian	Asian	Black	Hispanic	Internat'l	Multi- Racial	Pacific Islander	Uniden- tified	White	Grand Total
McWilliams School of Biomedical Informatics										
MS	1	10	8	13	16	2	0	8	22	80
DHI	0	0	1	1	0	0	0	0	2	4
PhD	0	1	0	0	5	0	0	1	0	7
Total MSBMI	1	11	9	14	21	2	0	9	24	91
School of Dentistry										
BS	0	8	3	6	2	0	0	1	1	21
UG Certificate	0	6	0	0	1	0	0	0	1	8
DDS	0	27	6	17	0	1	0	9	42	102
MS	0	9	0	3	4	1	0	1	12	30
PGCRT	0	9	0	4	4	1	0	1	15	34
Total UTSD	0	59	9	30	11	3	0	12	71	195
Graduate School of Biomedical Sciences										
MS	0	5	2	6	6	1	0	3	10	33
PhD	0	9	3	2	28	1	0	4	11	58
Total GSBS	0	14	5	8	34	2	0	7	21	91
McGovern Medical School										
MS	0	0	0	0	0	0	0	0	0	0
MD	0	45	15	36	0	7	0	11	112	226
Total MMS	0	45	15	36	0	7	0	11	112	226
Cizik School of Nursing										
BSN	0	73	40	91	1	10	1	3	57	276
MSN	0	27	22	26	3	2	0	4	43	127
DNP	0	14	23	16	1	0	0	2	38	94
PhD	0	1	0	0	0	0	0	0	2	3
Total CSON	0	115	85	133	5	12	1	9	140	500
School of Public Health										
MPH	0	99	55	88	35	9	0	18	98	402
MS	0	3	0	0	4	0	0	0	3	10
DrPH	0	0	0	2	1	0	0	0	3	6
PhD	0	6	2	6	23	0	0	4	14	55
Total SPH	0	108	57	96	63	9	0	22	118	473
Grand Total	1	352	180	317	134	35	1	70	486	1,576

McGovern Medical School Graduating Class Specialty Choices May 2024

Source: Dana McDowelle, PhD, McGovern Medical School

Note: Of the 224 graduating seniors who participated in the National Residency Match Program (NRMP), 135 (60%) will stay in Texas for their first year of postgraduate training, and 55 (26%) matched to McGovern Medical School programs for the duration of their training. 90 members of the class (40%) matched to primary care specialties.

Specialty	Number	Percentage
Internal Medicine	29	13%
Pediatrics	25	11%
Emergency Medicine	9	4%
Family Medicine	15	7%
Anesthesiology	25	11%
Psychiatry	17	8%
Orthopaedic Surgery	7	3%
Ophthalmology	6	3%
Surgery (General)	13	6%
Obstetrics/Gynecology	16	7%
Physical Medicine & Rehab	3	1%
Diagnostic Radiology	13	6%
Surgery (Preliminary)	6	3%
Deferred	1	<1
Otolaryngology	0	0%
Urology	1	0%
Dermatology	5	2%
Internal Medicine (Preliminary)	3	1%
Neurology	9	4%
Oral & Maxillofacial Surgery	3	1%
Neurological Surgery	2	<1
Internal Medicine/Pediatrics	2	<1
Interventional Radiology	3	<1
Pediatric Neurology	2	1%
Plastic Surgery	1	0%
Vascular Surgery	1	0%
Pathology	3	<1
Radiation Oncology	1	<1
Transitional Year	1	0%
Internal Medicine/Psychiatry	1	<1
Pediatrics/Psychiatry	0	0%
Psychiatry/Family Medicine	1	<1%
Emergency Medicine/Family Medicine	0	0%
Grand Total	224	

Profile of Medical Residents in ACGME Accredited Programs *September 2024*

Source: April Bass, McGovern Medical School

¹ Aggregate reporting requirements for ACGME differ from federal aggregate postsecondary reporting requirements. Hispanic/Latino ethnicity is included in the race categories listed below. In this Profile of Medical Residents, 160 of the 1,231 medical residents reported a Hispanic/Latino ethnicity.

Specialty	Male	Female	White	Black	Pacific Islander	Asian	American Indian	Multi- Racial	Other	Total
Adolescent Medicine	0	1	0	0	0	1	0	0	0	1
Adult Cardiothoracic Anesthesiology	3	2	4	0	0	1	0	0	0	5
Adult Reconstructive Orthopaedics	4	0	2	0	0	2	0	0	0	4
Adv. Heart Failure & Transplant Cardiology	0	0	0	0	0	0	0	0	0	0
Anesthesiology	64	49	52	14	0	40	1	6	0	113
Blood Banking/Transfusion Medicine	0	1	1	0	0	0	0	0	0	1
Brain Injury Medicine	1	0	1	0	0	0	0	0	0	1
Cardiovascular Disease	27	9	10	0	0	24	0	2	0	36
Child & Adolescent Psychiatry	3	9	6	0	0	6	0	0	0	12
Child Abuse Pediatrics	0	3	2	0	0	1	0	0	0	3
Child Neurology	4	5	5	1	0	2	0	1	0	9
Clinical Cardiac Electrophysiology	6	0	2	0	0	4	0	0	0	6
Clinical Informatics	2	0	1	0	0	1	0	0	0	2
Clinical Neurophysiology	2	2	1	0	0	2	0	1	0	4
Colon and Rectal Surgery	3	1	2	1	0	1	0	0	0	4
Combined Adult & Pediatric Infect. Diseases	1	0	0	1	0	0	0	0	0	1
Combined Adult & Pediatric Nephrology	0	0	0	0	0	0	0	0	0	0
Critical Care Anesthesia	0	0	0	0	0	0	0	0	0	0
Dermatology	4	17	12	2	0	7	0	0	0	21
Dermatopathology	0	1	1	0	0	0	0	0	0	1
Diagnostic Radiology	21	25	27	5	0	12	0	2	0	46
Emergency Medical Services	0	2	2	0	0	0	0	0	0	2
Emergency Medicine	27	34	33	11	0	17	0	0	0	61
Endocrinology, Diabetes & Metabolism	0	6	3	0	0	3	0	0	0	6
Epilepsy	4	2	3	0	0	3	0	0	0	6
Family Practice	17	19	12	4	0	20	0	0	0	36
Gastroenterology	6	7	4	2	0	7	0	0	0	13
General Surgery	34	25	35	5	0	18	0	1	0	59
Geriatric Medicine (IMG)	1	2	0	0	0	3	0	0	0	3
Hematology and Medical Oncology	3	6	1	0	0	6	1	1	0	9
Hospice & Palliative Medicine	2	2	1	0	0	3	0	0	0	4
Infectious Diseases	5	5	4	1	0	4	1	0	0	10
Internal Medicine	71	67	54	16	0	58	2	8	0	138
Internal Medicine/Pediatrics	19	13	20	2	0	10	0	0	0	32
Interventional Cardiology	2	1	2	0	0	0	0	1	0	3
Interventional Radiology - Integrated	10	5	9	1	0	5	0	0	0	15
Maternal Fetal Medicine	3	9	10	0	0	2	0	0	0	12
Medical Biochemical Genetics	1	1	2	0	0	0	0	0	0	2
Neonatal Perinatal Medicine	2	7	4	0	0	4	1	0	0	9
Nephrology	5	4	3	1	0	4	1	0	0	9
Neurocritical Care (Multidisciplinary)	5	3	3	2	0	3	0	0	0	8
Neurological Surgery	15	5	12	0	0	7	0	1	0	20
Neurology	21	23	20	3	0	21	0	0	0	44
Neuroradiology	4	1	4	0	0	1	0	0	0	5
Obstetric Anesthesiology	1	1	2	0	0	0	0	0	0	2
Obstetrics & Gynecology	3	45	22	13	0	13	0	0	0	48
Occupational Medicine	4	1	3	2	0	0	0	0	0	5
Ophthalmology	8	8	8	1	0	7	0	0	0	16
Orthopaedic Sports Medicine	4	0	4	0	0	0	0	0	0	4
Orthopaedic Surgery	23	6	21	0	0	4	1	3	0	29
Otolaryngology	7	8	8	0	0	5	0	2	0	15
Pathology	13	15	13	0	0	13	1	1	0	28
Pediatric Anesthesiology	1	1	2	0	0	0	0	0	0	2
Pediatric Cardiology	4	5	4	3	0	2	0	0	0	9
Pediatric Critical Care Medicine	3	8	6	0	0	5	0	0	0	11
Pediatric Emergency Medicine	0	4	1	1	0	2	0	0	0	4
Pediatric Endocrinology	2	2	2	0	0	2	0	0	0	4

continued **Profile of Medical Residents in ACGME Accredited Programs Sept 2024**

Specialty	Male	Female	White	Black	Pacific Islander	Asian	American Indian	Multi- Racial	Other	Total
Pediatric Gastroenterology	1	5	1	0	0	4	0	1	0	6
Pediatric Hospital Medicine	2	2	2	0	0	2	0	0	0	4
Pediatric Infectious Diseases	1	2	3	0	0	0	0	0	0	3
Pediatric Nephrology	0	1	1	0	0	0	0	0	0	1
Pediatric Pulmonology	1	5	4	1	0	0	0	1	0	6
Pediatric Surgery	1	1	2	0	0	0	0	0	0	2
Pediatrics	12	71	37	10	0	30	0	6	0	83
Pediatrics/Medical Genetics & Genomics	0	4	3	0	0	1	0	0	0	4
Physical Medicine & Rehabilitation	8	8	8	4	0	4	0	0	0	16
Plastic & Reconstructive Surgery	4	1	3	1	0	1	0	0	0	5
Plastic Surgery - Integrated	9	1	7	0	0	3	0	0	0	10
Psychiatry	27	38	36	4	0	24	1	0	0	65
Pulmonary Disease & Critical Care Medicine	18	6	10	0	0	13	0	1	0	24
Rheumatology	3	3	2	0	0	2	1	1	0	6
Sleep Medicine	2	0	1	0	0	1	0	0	0	2
Spinal Cord Injury Medicine	0	1	1	0	0	0	0	0	0	1
Sports Medicine (FP)	1	1	0	0	0	2	0	0	0	2
Surgical Critical Care	1	3	4	0	0	0	0	0	0	4
Urology	9	6	8	0	0	7	0	0	0	15
Vascular Neurology	4	3	1	2	0	4	0	0	0	7
Vascular Surgery	2	0	0	0	0	1	0	1	0	2
Vascular Surgery - Integrated	8	2	7	0	0	2	0	1	0	10
Grand Total	589	642	607	114	0	457	11	42	0	1,231

School of Dentistry Residents & Postgraduate Students Fall 2024

Source: Robert Spears, PhD, School of Dentistry

Note: Three types of students comprise the UTHealth Houston School of Dentistry's Advanced Education Programs: postgraduate, graduate, and resident.

- A postgraduate student is a dentist registering and paying tuition and fees for courses leading to a certificate in the specialty area.
- A graduate student is a dentist registering and paying tuition and fees for courses leading to a Master of Science in Dentistry degree and a certificate in a dental specialty area.
- A resident is a dentist who receives training in a specialty area, is paid a stipend, and who receives a certificate of completion.
- Residencies are available only in oral and maxillofacial surgery and pathology.

Specialty	Gender			American Indian	Asian	Black	Hispanic	Multi- Racial	Pacific Islander	Uniden- tified	White
	Total	M	F								
Endodontics	10	4	6	1	2	1	2	0	0	0	4
General Dentistry (GPR)	7	2	5	0	3	2	0	0	0	0	2
General Dentistry (AEGD)	6	4	2	0	0	2	1	0	0	0	3
Oral & Maxillofacial Surgery	30	23	7	0	7	1	1	0	0	1	20
Orthodontics & Dentofacial Orthopedics	14	7	7	1	4	0	1	0	0	0	8
Pediatric Dentistry	16	4	12	1	4	1	2	0	1	0	7
Periodontics	11	6	5	0	2	0	2	0	0	1	6
Prosthodontics	16	4	12	0	7	0	0	0	0	0	9
Dental Informatics	2	0	2	0	0	1	0	0	0	0	1
Oral Pathology	2	0	2	0	2	0	0	0	0	0	0
Grand Total	114	54	60	3	31	8	9	0	1	2	60

Medical (MCAT) and Dental (DAT) Applicant Scores *Fall 2024 Entering Class*

Sources: Dana McDowelle, PhD, McGovern Medical School; Robert Spears, PhD, School of Dentistry

Applicant Average Medical College Admission Test (MCAT) Scores Fall 2024 Entering Class

Subject	All Applicants	Enrolled Applicants
Biological and Biochemical Foundations of Living Systems	126.8	128.2
Chemical and Physical Foundations of Biological Systems	126.6	128.1
Critical Analysis and Reasoning Skills	126	127
Psychological, Social, and Biological Foundations of Behavior	127.7	129
Applicant Total Score	507.1	512.3
Applicant Average Overall GPA	3.7	3.85

Applicant Average Dental Aptitude Test (DAT) Scores Fall 2024 Entering Class

Subject	All Applicants	Enrolled Applicants
Academic Average AA	19.6	21.9
Perception Ability MA	19.3	20.6
Quantitative Reasoning	19.0	21.5
Reading Comprehension	21.1	23.0
Biology	19.1	21.7
Inorganic Chemistry	19.4	21.8
Organic Chemistry	19.1	21.3
Total Science	19.1	21.3
Applicant Average Overall GPA	3.58	3.82

Tuition & Fees *Fall 2024 & Spring 2025*

Source: Sue Thomey, Bursar's Office

Notes:

- Fee totals do not represent the full cost of education; additional fees may be assessed depending upon program year and courses taken.
- Online courses may charge an additional alternative instruction fee.
- All students pay a mandatory graduation fee (\$150) when applicable.
- An Archer Program Fee (\$3,900) is charged to all students accepted to the Archer fellowship program in Washington DC.
- For full fee detail, please go to the Bursar's Office website at <https://inside.uth.edu/finance/bursars/student/tuition-and-fees.htm>.

Level	Resident	Non-Resident
Undergraduate - Nursing		
Tuition (30 semester credit hours)	\$8,730.00	\$34,830.00
Fees	2,149.72	2,199.72
Total Undergraduate (BSN)	\$10,879.72	\$37,029.73
Undergraduate - Dental Hygiene		
Tuition (30 semester credit hours)	\$5,610.00	\$18,630.00
Fees	3,247.72	3,742.72
Total Undergraduate (BSDH)	\$8,857.72	\$22,372.72
Graduate - Biomedical Informatics		
Tuition (24 semester credit hours)	\$6,240.00	\$26,160.00
Fees	2,582.72	2,632.72
Total Graduate - MSBMI	\$8,822.72	\$28,792.72
Graduate - Biomedical Sciences		
Tuition (24 semester credit hours)	\$5,952.00	\$15,792.00
Fees	377.72	427.72
Total Graduate - GSBS	\$6,329.72	\$16,219.72
Graduate - Clinical Research		
Tuition (24 semester credit hours)	\$2,304.00	\$12,144.00
Fees	372.47	422.47
Total Graduate - MSCR	\$2,676.47	\$12,566.47
Graduate Anesthesia		
Tuition (24 semester credit hours)	\$25,950.00	\$45,840.00
Fees	772.47	822.47
Total Graduate – MSA	\$26,692.47	\$46,662.47
Graduate Dental Hygiene		
Tuition (24 semester credit hours)	\$7,152.00	\$17,040.00
Fees	1,292.72	1,742.72
Total Graduate – MSDH	\$8,449.72	\$18,782.72
Graduate - Dental Advanced Ed		
Tuition (24 semester credit hours)	\$4,896.00	\$20,304.00
Fees	6,765.81	6,815.81
Total Graduate - Dental Adv Ed	\$11,661.81	\$27,119.81
Graduate - Nursing		
Tuition (24 semester credit hours)	\$9,072.00	\$28,512.00
Fees	1,597.72	1,647.72
Total Graduate - CSON	\$10,669.72	\$30,159.72
Graduate - Public Health		
Tuition (24 semester credit hours)	\$6,888.00	\$25,560.00
Fees	4,184.72	4,234.72
Total Graduate - SPH	\$11,072.72	\$29,794.72
Professional - Medical (MD)		
Tuition	\$21,083.00	\$28,738.00
Fees	5,996.81	6,146.81
Total Professional - MD	\$27,079.81	\$34,884.81
Professional - Dental (DDS)		
Tuition	\$36,662.00	\$57,804.00
Fees	7,697.75	7,847.75
Total Professional - DDS	\$44,359.75	\$65,651.75

Student Financial Aid Profile FY 2017 - 2024

Sources: Heather Beckles-Bright and Yennie Jimenez, Office of Student Financial Services

	FY 2017	FY 2018	FY 2019	FY 2020	FY 2021	FY 2022	FY 2023	FY 2024
Federal Grant Awards								
FPLP – Perkins ^a	\$0	\$0	\$0	\$0	\$0	\$0	\$0	\$0
HPSLP – Dental	0	0	0	0	0	0	0	0
HPSLP – Medical	0	0	0	0	0	0	0	0
Nursing SLP – UG	0	0	0	0	0	0	0	0
Nursing SLP – Graduate	0	0	0	0	0	0	0	0
NFLP	5,000	0	0	0	0	0	0	0
LDS – Dental	6,507	0	0	0	0	0	0	0
LDS – Medical	0	0	0	0	0	0	0	0
Federal Grant Total	\$11,507	\$0	\$0	\$0	\$0	\$0	\$0	\$0
Institutional Matching								
FPLP – Perkins ^a	\$0	\$0	\$0	\$0	\$0	\$0	\$0	\$0
HPSLP – Dental	0	0	0	0	0	0	0	0
HPSLP – Medical	0	0	0	0	0	0	0	0
Nursing SLP – UG	0	0	0	0	0	0	0	0
Nursing SLP – Grad	0	0	0	0	0	0	0	0
NFLP	556	0	0	0	0	0	0	0
LDS – Dental	723	0	0	0	0	0	0	0
LDS – Medical	0	0	0	0	0	0	0	0
Inst. Matching Total	\$1,279	\$0	\$0	\$0	\$0	\$0	\$0	\$0
Collections^b								
FPLP – Perkins ^a	\$654,783	\$649,450	\$573,721	\$470,738	\$442,904	\$219,600	\$322,106	\$153,008
HPSLP – Dental	544,471	794,322	655,400	589,602	932,039	668,933	525,698	737,889
Nursing SLP – GR	11,730	27,194	16,705	20,577	18,391	13,733	7,398	13,870
LDS - Dental ^d	87,347	92,774	63,184	33,466	130,228	45,844	57,470	47,646
LDS - Medical ^d	186,330	209,738	179,216	113,993	108,222	77,909	124,847	184,159
NFLP ^d	49,745	38,328	19,804	24,113	6,339	8,086	10,339	15,752
Collections Total	\$1,542,650	\$1,816,706	\$1,517,407	\$1,274,237	\$1,638,749	\$1,034,105	\$1,047,858	\$1,152,324
Total Available in Federal Loan Funds	\$1,555,436	\$1,816,706	\$1,517,407	\$1,274,237	\$1,638,749	\$1,034,105	\$1,047,858	\$1,152,324
Default Rates^c								
FPLP – Perkins ^a	2.99%	0.00%	4.23%	0.67%	0.00%	0.00%	0.00%	0.00%
HPSLP – Dental	0.61%	0.44%	0.42%	0.40%	0.35%	0.34%	0.74%	0.30%
Nursing SLP – graduate	0.82%	0.77%	1.79%	0.68%	0.66%	0.65%	3.05%	3.63%
LDS - Dental	0.24%	0.02%	0.00%	0.00%	0.00%	0.00%	3.11%	0.00%
LDS - Medical	1.86%	1.70%	0.48%	0.43%	0.43%	0.37%	1.73%	0.70%
NFLP ^d	3.03%	7.05%	0.00%	0.00%	0.00%	0.00%	2.20%	4.98%

Legend of Award abbreviations

FPLP – Federal Perkins Loan Program
HPSLP - Health Professions Student Loan Program
LDS – Loans for Disadvantaged Students
SLP – Student Loan Program
UG - Undergraduate
GR - Graduate
NFLP – Nursing Faculty Loan Program

^a On June 30, 1993, the Department of Education initiated a new default rate calculation for the Perkins Loan Program. The new default rate calculation, called the Cohort Default Rate, looks at borrowers entering repayment in a specific one year period. As of June 30, 2024, the Cohort Default Rate for the Perkins Loan Program was 0.00%, for the year ending June 30, 2024.

^b Principal, interest, investment income and late fees.

^c As of June 30, 2024 overall default rates.

Total Student Financial Aid Awards by School FY 2015 - 2024

Sources: Heather Beckles-Bright and Yennie Jimenez, Office of Student Financial Services

	FY 2015		FY 2016		FY 2017		FY 2018		FY 2019	
	#	Award	#	Award	#	Award	#	Award	#	Award
McWilliams School of Biomedical Informatics	66	\$805,290	71	\$694,693	59	\$524,437	56	\$738,929	60	\$545,581
School of Dentistry	395	15,915,038	424	18,436,165	443	19,471,306	429	19,629,668	452	19,400,039
Graduate School of Biomedical Sciences	95	1,084,073	90	903,085	112	1,039,511	104	1,165,567	113	1,203,719
McGovern Medical School	657	24,144,860	684	25,229,960	693	25,465,068	711	25,902,186	716	25,777,789
Cizik School of Nursing	848	13,108,331	920	15,630,981	1,076	18,464,162	1,206	23,244,493	1,162	19,663,677
School of Public Health	496	6,770,923	492	6,872,444	524	7,954,023	555	9,396,458	531	7,979,697
Grand Total	2,557	\$61,828,515	2,681	\$67,767,328	2,907	\$72,918,507	3,061	\$80,077,301	3,034	\$74,570,502

	FY 2020		FY 2021		FY 2022		FY 2023		FY 2024	
	#	Award	#	Award	#	Award	#	Award	#	Award
McWilliams School of Biomedical Informatics	95	\$663,108	125	\$1,308,999	129	\$1,525,505	178	\$1,459,712	178	\$1,056,428
School of Dentistry	450	20,357,541	445	21,276,805	446	22,520,750	438	23,599,738	431	25,432,556
Graduate School of Biomedical Sciences	107	1,214,069	136	1,101,457	122	1,223,273	172	1,677,453	146	1,663,536
McGovern Medical School	705	26,965,232	705	27,686,813	691	27,146,787	687	29,048,366	675	30,585,308
Cizik School of Nursing	1,104	17,586,776	1,108	17,646,392	1,034	17,846,564	897	15,851,312	855	16,142,261
School of Public Health	572	8,284,980	740	11,195,522	824	12,800,478	710	12,058,788	634	9,902,560
Grand Total	3,033	\$75,071,706	3,259	\$80,215,988	3,246	\$83,063,357	3,082	\$83,695,369	2,919	\$84,782,649

Total Student Financial Aid Awards by Major Program FY 2015 - 2024

Sources: Heather Beckles-Bright and Yennie Jimenez, Office of Student Financial Services

	FY 2015	FY 2016	FY 2017	FY 2018	FY 2019
LDS – Dental	\$50,000	\$40,000	\$54,000	\$80,000	\$52,000
LDS – Medical	131,896	118,126	295,060	196,850	114,423
FPLP – Perkins	594,000	517,687	580,913	183,230	0
HPSLP – Dental	489,747	420,000	885,432	829,544	429,000
HPSLP – Medical	0	0	0	0	0
Nursing SLP – Undergraduate	0	0	0	0	0
Nursing SLP – Graduate	3,000	16,500	49,500	92,500	33,000
Nurse Faculty Loan Program	47,685	52,129	7,309	0	8,182
Health Education Loan Program	0	0	0	0	0
Direct Loans - Subsidized	2,603,964	2,480,313	2,515,068	2,636,156	2,445,241
Direct Loans - Unsubsidized	46,868,563	48,893,411	51,500,925	54,026,973	52,881,783
Institutional & other loans and scholarships	11,039,660	15,229,162	17,030,300	22,032,048	18,606,873
Grand Total	\$61,828,515	\$67,767,328	\$72,918,507	\$80,077,301	\$74,570,502

	FY 2020	FY 2021	FY 2022	FY 2023	FY 2024
LDS – Dental	\$91,000	\$98,485	\$75,000	\$90,000	\$25,000
LDS – Medical	135,000	254,063	150,000	118,542	125,000
FPLP – Perkins	0	0	0	0	0
HPSLP – Dental	559,000	670,833	753,000	834,794	650,000
HPSLP – Medical	0	0	0	0	0
Nursing SLP – Undergraduate	0	0	0	0	0
Nursing SLP – Graduate	9,000	16,500	16,500	6,000	9,000
Nurse Faculty Loan Program	12,260	20,837	10,929	0	0
Health Education Loan Program	0	0	0	0	0
Direct Loans - Subsidized ¹	2,259,726	2,310,879	2,476,029	1,949,109	1,750,989
Direct Loans - Unsubsidized ¹	51,759,890	55,289,319	55,839,586	55,059,024	51,737,196
Institutional & other loans and scholarships	20,245,830	21,555,072	23,742,313	25,637,900	30,485,463
Grand Total	\$75,071,706	\$80,215,988	\$83,063,357	\$83,695,369	\$84,782,648

Average Student Financial Aid Awards by School FY 2015 - 2024

Sources: Heather Beckles-Bright and Yennie Jimenez, Office of Student Financial Services

Note: This is the average of those students receiving aid.

	FY 2015	FY 2016	FY 2017	FY 2018	FY 2019
McWilliams School of Biomedical Informatics	\$12,201	\$9,784	\$8,889	\$13,195	\$9,093
School of Dentistry	40,291	43,482	43,953	45,757	42,920
Graduate School of Biomedical Sciences	11,411	10,034	9,281	11,207	10,652
McGovern Medical School	36,750	36,886	36,746	36,431	36,002
Cizik School of Nursing	15,458	16,990	17,160	19,274	16,922
School of Public Health	13,651	13,968	15,179	16,931	15,028
Combined Average	\$24,180	\$25,277	\$25,084	\$26,161	\$24,578

	FY 2020	FY 2021	FY 2022	FY 2023	FY 2024
McWilliams School of Biomedical Informatics	\$6,980	\$10,742	\$11,826	\$8,201	\$5,935
School of Dentistry	45,239	47,813	50,495	53,881	59,008
Graduate School of Biomedical Sciences	11,346	8,099	10,027	9,753	11,394
McGovern Medical School	38,249	39,272	39,286	42,283	45,312
Cizik School of Nursing	15,930	15,926	17,260	17,671	18,880
School of Public Health	14,484	15,129	15,535	16,984	15,619
Combined Average	\$24,752	\$24,614	\$25,589	\$27,156	\$26,025

Average Student Debt on Graduation FY 2015 - 2024

Sources: Heather Beckles-Bright and Yennie Jimenez, Office of Student Financial Services

Note: This is the average of those students receiving aid.

	FY 2015	FY 2016	FY 2017	FY 2018	FY 2019
McWilliams School of Biomedical Informatics	\$46,669	\$34,151	\$37,746	\$30,998	\$40,135
School of Dentistry (DDS)	151,335	157,066	158,561	157,620	161,743
School of Dentistry - Dental Hygiene	26,950	32,678	29,889	30,677	27,745
School of Dentistry - Dental Post Grad	62,539	59,801	52,533	64,871	82,473
Graduate School of Biomedical Sciences	48,156	37,589	38,402	38,463	32,833
McGovern Medical School (MD)	117,381	115,372	130,099	133,826	125,180
McGovern Medical School - Clinical Research	-	-	-	-	-
McGovern Medical School – Anesthesia	-	-	-	-	-
Cizik School of Nursing - Undergraduate	20,060	22,232	20,972	21,648	19,542
Cizik School of Nursing - Graduate	43,245	38,123	48,364	40,108	47,572
School of Public Health	37,950	34,608	36,920	39,624	40,809

	FY 2020	FY 2021	FY 2022	FY 2023	FY 2024
McWilliams School of Biomedical Informatics	\$27,573	\$23,828	\$37,300	\$43,777	\$34,048
School of Dentistry (DDS)	175,483	163,685	190,526	188,858	194,509
School of Dentistry - Dental Hygiene	27,585	24,129	17,562	26,344	24,971
School of Dentistry - Dental Post Grad	58,064	70,538	111,477	82,617	94,591
Graduate School of Biomedical Sciences	37,303	42,649	58,167	85,855	27,924
McGovern Medical School (MD)	138,972	138,174	123,404	131,106	145,444
McGovern Medical School - Clinical Research	-	-	-	0	0
McGovern Medical School – Anesthesia	-	-	-	-	-
Cizik School of Nursing - Undergraduate	19,426	18,397	23,238	19,979	20,795
Cizik School of Nursing - Graduate	43,868	41,382	64,162	56,838	52,305
School of Public Health	36,029	38,914	41,053	44,994	45,259

Total Graduates by School

Sources: Brenda Powers and Tera Wright, Office of the Registrar

McWilliams School of Biomedical Informatics <i>2010 - present</i>	718
School of Dentistry <i>1943 – present</i>	12,769
Graduate School of Biomedical Sciences <i>1963 - present</i>	3,396
McGovern Medical School <i>1970 - present</i>	9,335
Cizik School of Nursing <i>1972 - present</i>	16,120
School of Public Health <i>1967 - present</i>	11,115
School of Allied Health Sciences <i>1973 - 1996</i>	2,019
School of Health Information Sciences <i>1998 – 2009</i>	134
Grand Total (all degrees, all years)	55,606

This page is intentionally blank

Research

Research Expenditures by Unit	41
UT Health-Related Institutions Research Expenditures by Source	42
Trends in UT Health-Related Institutions Research Expenditures	42
Research Expenditures by Sponsoring Agency	43
Intellectual Property Activity	44
Grant Proposals by Unit & Type	45
Contract & Grant Awards by Unit & Type	46
Contract & Grant Awards by Source	48
NIH Awards by Unit	50
Federal Awards by Agency	51
Principal Investigators by Unit	51
Sponsored Project Activity Report	52

Research Expenditures by Unit FY 2015 - 2024

Source: Scott Barnett, Accounting & Budget

Includes operating expenses, indirect cost recoveries and capital purchased.

Note: Faculty in the Graduate School of Biomedical Sciences hold their primary appointments in another school/institution. As such, their respective research activity is reported in the home department, and not through GSBS. The exception to this is when reporting the research activity of faculty appointed at UTHealth Houston who hold administrative roles at GSBS.

	FY 2015	FY 2016	FY 2017	FY 2018	FY 2019
McWilliams School of Biomedical Informatics	\$7,494,484	\$8,269,184	\$9,349,754	\$12,279,875	\$17,838,961
School of Dentistry	2,901,719	3,484,282	3,989,747	4,691,121	4,810,691
McGovern Medical School	133,821,022	141,450,730	151,326,681	157,876,613	168,447,437
Cizik School of Nursing	1,084,594	1,604,983	1,236,005	988,471	1,892,077
School of Public Health	48,174,634	45,512,796	43,682,179	47,361,787	45,893,450
Behavioral Sciences Campus	99,186	15,763	76,808	11,957	630
Academic Support Area	29,141,911	25,095,777	25,263,412	19,356,769	15,913,564
Grand Total	\$222,717,551	\$225,433,516	\$234,924,585	\$242,566,592	\$254,796,810

	FY 2020	FY 2021	FY 2022	FY 2023	FY 2024
McWilliams School of Biomedical Informatics	\$17,981,236	\$20,923,751	\$22,429,100	\$21,120,683	\$25,248,360
School of Dentistry	4,239,406	4,086,971	6,019,911	7,065,081	8,023,629
McGovern Medical School	165,979,551	178,848,868	196,739,969	218,475,802	251,665,832
Cizik School of Nursing	2,472,380	3,342,132	3,839,196	4,605,365	6,867,425
School of Public Health	48,148,749	54,275,844	62,980,320	64,905,568	74,318,378
Behavioral Sciences Campus	77	448	10,131	17,398	4,419
Academic Support Area	17,324,662	27,570,562	27,870,455	34,198,451	28,601,113
Texas Epidemic Public Health Institute	-	-	-	-	13,335
Grand Total	\$256,146,061	\$289,048,576	\$319,889,083	\$350,388,349	\$394,742,489

UT Health-Related Institutions Research Expenditures by Source FY 2023

Source: Research Expenditures for Texas Institutions of Higher Education, The Texas Higher Education Coordinating Board.

Note: FY 2023 is the most recent report available on the THECB website as of press time.

Institution	Federal	State & Local Appropriations	State and Local Contracts & Grants	Institution Resources	Private For-Profit	Private Non-Profit	Total
UTHealth Houston	\$190,523,501	\$26,749,100	\$17,287,459	\$42,056,740	\$17,535,074	\$44,208,062	\$338,359,936
UT Health San Antonio	144,827,953	24,410,243	13,633,623	39,023,732	17,148,212	21,957,028	\$261,000,791
UT Health Tyler	12,554,793	1,660,635	8,628,081	-201,256	172,451	5,468,418	\$28,283,122
UT MD Anderson	255,359,307	259,271,165	40,799,751	166,847,759	248,261,302	190,191,487	\$1,160,730,771
UTMB-Galveston	150,933,962	351,411	7,127,338	27,161,402	6,137,582	10,263,404	\$201,975,099
UT Southwestern	340,000,087	51,765,936	43,975,560	76,072,144	53,679,998	142,328,356	\$707,822,081
UT Austin Dell Medical School	16,306,704	2,566,449	3,278,526	14,417,055	3,380,006	7,027,539	\$46,976,279
UT Rio Grande Valley Medical School	2,374,505	0	193,224	0	0	1,847,485	\$4,415,214
Grand Total	\$1,112,880,812	\$366,774,939	\$134,923,562	\$365,377,576	\$346,314,625	\$423,291,779	\$2,749,563,293

Trends in UT Health-Related Institutions Research Expenditures FY 2019 - 2023

Source: Research Expenditures for Texas Institutions of Higher Education, The Texas Higher Education Coordinating Board.

Note: FY 2023 is the most recent report available on the THECB website as of press time.

Institution	2019	2020	2021	2022	2023	% Change 2019-23
UTHealth Houston	\$252,114,494	\$253,142,796	\$285,829,018	\$309,595,732	\$338,359,936	34.2%
UT Health San Antonio	180,665,435	195,215,120	\$203,336,799	\$221,431,562	\$261,000,791	44.5%
UT Health Tyler	17,730,519	21,264,915	\$25,685,357	\$27,850,484	\$28,283,122	59.5%
UT MD Anderson	895,748,758	967,676,566	\$1,021,617,577	\$1,074,239,585	\$1,160,730,771	29.6%
UTMB-Galveston	147,683,964	152,611,603	\$161,572,993	\$171,977,460	\$201,975,099	36.8%
UT Southwestern	489,417,809	524,109,323	\$554,381,472	\$640,472,716	\$707,822,081	44.6%
UT Austin Dell Medical School	34,856,662	35,698,490	\$37,088,313	\$45,552,212	\$46,976,279	34.8%
UT Rio Grande Valley Medical School	19,356,542	22,605,280	\$22,813,962	\$21,021,776	\$4,415,214	-77.2%
Grand Total	\$2,037,574,183	\$2,172,324,093	\$2,312,325,491	\$2,512,141,527	\$2,749,563,293	34.9%

Research Expenditures by Type of Sponsoring Agency FY 2024

Source: Scott Barnett, Accounting & Budget

	Grand Total	Federal	State	Local	Private	Other-Appropriated	Other-Designated
McWilliams School of Biomedical Informatics	\$25,248,360	16,036,837	2,416,577	0	1,703,712	0	5,091,234
School of Dentistry	\$8,023,629	7,278,469	0	0	510,928	144,050	90,183
McGovern Medical School	\$251,665,832	141,393,246	9,027,522	0	50,407,151	18,374,317	32,463,596
Cizik School of Nursing	\$6,867,425	4,741,987	373,452	0	994,999	746,366	10,621
School of Public Health	\$74,318,378	49,091,132	7,585,548	307,060	12,351,321	2,932,180	2,051,138
Behavioral Sciences Campus	\$4,419	0	0	0	4,419	0	0
Academic Support Area	\$28,601,113	8,562,499	0	0	0	12,264,448	7,774,167
Texas Epidemic Public Health Institute	\$13,335	13,335	0	0	0	0	0
Grand Total	\$394,742,489	\$227,117,503	\$19,403,098	\$307,060	\$65,972,529	\$34,461,360	\$47,480,939

Intellectual Property Activity FY 2018 – 2024

Source: Christine Weaver, PhD, Office of Technology Management

Notes:

¹FY 2021 numbers restated from *Fact Book 2022*. Additionally, the FY 2020 U.S. patent application total is revised from *Fact Book 2021*.

²FY 2023 numbers restated from *Fact Book 2024*.

³Royalty & License Fee income Includes License Management Fees and equity sales.

	FY 2018	FY 2019	FY 2020	FY 2021	FY 2022	FY 2023	FY 2024
Invention Disclosures	71	58	52	50	59	51	60
New U.S. Patent Applications Filed ¹	65	63	58	57	57	30	42
Licenses and Options Executed ²	24	22	22	24	10	13	29
Licenses and Options Generating Income	87	73	75	88	78	80	88
Active License and Option Agreements ²	125	139	130	137	125	108	110
U.S. Patents Issued	7	16	8	17	18	6	10
Startup Companies Formed	1	5	2	4	1	1	3
Royalty & License Fee income³	\$3,702,514	\$5,045,102	\$3,385,894	\$7,840,499	\$4,192,900	\$5,829,549	\$3,293,304

Grant Proposals by Unit & Type FY 2020 – 2024

Source: Frank La, Sponsored Projects Administration

Note: Data reflect the respective annual award amounts for the period it is effective. Clinical research projects that paid based on study subject enrollment were counted as awarded at 100 percent of the contracted amount in the year received, regardless of enrollment/earned revenue. Reporting is on a cash-basis method, reflecting revenue as it is received.

	FY 2020		FY 2021		FY 2022		FY 2023		FY 2024	
	\$	#	\$	#	\$	#	\$	#	\$	#
McWilliams School of Biomedical Informatics										
Fellowship/Scholarship	\$0	0	\$0	0	\$141,063	3	\$38,620	1	\$216,489	4
Instruction	18,326	1	73,012	2	18,776	1	1,031,232	4	\$1,301,105	2
Research	266,889,675	142	340,560,737	169	223,415,440	121	277,907,563	157	\$380,748,375	187
Other	0	0	35,447	1	179,484	2	6,724,575	1	\$763,570	6
Total MSMBI	\$266,908,001	143	\$340,669,196	172	\$223,754,763	127	\$285,701,990	163	\$383,029,539	199
School of Dentistry										
Fellowship/Scholarship	\$179,741	2	\$95,644	3	\$771,315	3	\$20,000	1	\$245,766	2
Instruction	0	0	2,950,635	1	1,289,922	1	0	0	\$0	0
Research	45,376,388	65	49,459,435	53	64,829,610	53	54,077,862	48	\$52,521,276	44
Other	2,701,030	2	64,999	1	1,291,535	4	3,163,399	4	\$1,904,640	2
Total UTSD	\$48,257,159	69	\$52,570,713	58	\$68,182,382	61	\$57,261,261	53	\$54,671,682	48
Graduate School Biomedical Sciences										
Fellowship/Scholarship	\$135,360	1	\$63,040	1	\$0	0	\$0	0	\$1,250,000	1
Instruction	0	0	0	0	0	0	\$1,716,650	1	\$0	0
Research	0	0	0	0	0	0	0	0	\$159,000	1
Total GSBS	\$135,360	1	\$63,040	1	\$0	0	\$1,716,650	1	\$1,409,000	2
McGovern Medical School										
Fellowship/Scholarship	\$4,483,168	42	\$6,950,098	56	\$7,999,358	59	\$5,908,141	50	\$11,301,561	84
Instruction	472,632	10	5,639,656	7	5,616,849	12	6,092,144	13	\$15,805,851	16
Research	915,254,440	867	1,035,251,741	894	991,621,505	864	1,225,927,522	1,029	\$1,664,514,816	1,411
Other	20,425,207	18	13,798,794	25	47,096,064	42	74,182,859	32	\$65,966,821	44
Total MMS	\$940,635,447	937	\$1,061,640,289	982	\$1,052,333,776	977	\$1,312,110,666	1,124	\$1,757,589,049	1,555
Cizik School of Nursing										
Fellowship/Scholarship	\$418,663	4	\$578,301	2	\$449,129	1	\$120,000	2	\$528,197	2
Instruction	1,499,738	2	758,936	2	885,023	3	542,835	2	\$238,066	2
Research	8,613,107	23	30,243,252	34	48,913,648	40	47,174,491	28	\$36,522,435	49
Other	1,413,979	6	220,869	4	359,138	3	6,197,198	5	\$1,097,640	1
Total CSON	\$11,945,487	35	\$31,801,358	42	\$50,606,938	47	\$54,034,524	37	\$38,386,338	54
School of Public Health										
Fellowship/Scholarship	\$410,889	2	\$197,196	3	\$477,887	4	\$70,000	1	\$0	0
Instruction	14,758,071	6	5,080,773	8	72,982	2	8,095,004	8	\$7,423,860	6
Research	309,034,392	310	308,385,381	300	328,948,345	306	403,451,768	338	\$525,720,624	430
Other	530,759	4	7,269,443	16	28,710,502	24	35,429,842	24	\$54,186,821	34
Total SPH	\$324,734,111	322	\$320,932,793	327	\$358,209,716	336	\$447,046,614	371	\$587,331,305	470
University Administration										
Fellowship/Scholarship	\$0	0	\$0	0	\$0	0	\$8,387,227	4	\$0	0
Instruction	204,075	1	0	0	0	0	84,227,147	4	\$0	0
Research	11,171,690	5	0	0	0	0	0	0	\$8,255,022	3
Other	1,995,703	2	0	0	0	0	0	0	\$0	0
Total UA	\$13,371,468	8	\$0	0	\$0	0	\$92,614,374	8	\$8,255,022	3
Behavioral Sciences Campus										
Fellowship/Scholarship	\$151,624	1	\$0	0	\$0	0	\$0	0	\$0	0
Research	0	0	0	0	0	0	0	0	\$0	0
Other	0	0	0	0	0	0	0	0	\$0	0
Total BSC	\$151,624	1	\$0	0	\$0	0	\$0	0	\$0	0
Texas Epidemic Public Health Institute										
Fellowship/Scholarship	-	-	-	-	\$0	0	\$0	0	\$0	0
Instruction	-	-	-	-	0	0	0	0	\$0	0
Research	-	-	-	-	0	0	423,762	1	\$17,999,900	1
Other	-	-	-	-	34,718,494	1	41,087,679	1	\$1,999,998	2
Total TEPHI	-	-	-	-	\$34,718,494	1	\$41,511,441	2	\$19,999,898	3
UTHealth Houston Total										
Fellowship/Scholarship	\$5,779,445	52	\$7,884,279	65	\$9,838,752	70	\$14,543,988	59	\$13,542,013	93
Instruction	16,952,842	20	14,503,012	20	7,883,552	19	101,705,012	32	\$24,768,882	26
Research	1,556,339,692	1,412	1,763,900,546	1,450	1,657,728,548	1,384	2,008,962,968	1,601	\$2,686,441,448	2,126
Other	27,066,678	32	21,389,552	47	112,355,217	76	166,785,552	67	\$125,919,490	89
Grand Total	\$1,606,138,657	1,516	\$1,807,677,389	1,582	\$1,787,806,069	1,549	\$2,291,997,520	1,759	\$2,850,671,833	2,334

Contract & Grant Awards by Unit & Type FY 2020 - 2024

Source: Frank La, Sponsored Projects Administration

Note: In FY 2022, Sponsored Projects Administration recategorized UTHealth's extramural funding portfolio to better reflect the broader range of the university's program types: 1) "Research" has been sub-categorized into "Basic/Lab Research or Services" (and includes federal shared equipment grants) and "Clinical Research", 2) Instruction and Fellowship/Scholarship have been combined into "Training/Fellowship/Scholarship" to highlight the number of programs geared toward developing future research scientists and, 3) the Non-Research/Public Service category has been separated from "Other" to reflect the growth of public health and clinical service programs. Examples of these are the county-wide covid testing contract and the federal Ryan White HIV/AIDS program. Last, the funding amounts are all inclusive of Sponsored Projects but the number of awards, prior to 2022, did not include clinical trials. FY 2022 number of awards includes 395 clinical trials.

	FY 2020		FY 2021		FY 2022		FY 2023		FY 2024	
	\$	#	\$	#	\$	#	\$	#	\$	#
McWilliams School of Biomedical Informatics										
Basic/Lab Research or Services	\$13,443,675	51	\$15,336,975	56	\$13,377,602	54	\$12,447,573	70	\$17,798,948	86
Clinical Research	0	0	0	0	3,380,194	19	6,361,902	22	7,362,168	18
Non-Research/Public Service	0	0	0	0	936,635	2	4,891,244	4	4,268,893	6
Training/Fellowship/Scholarship	0	0	73,012	2	179,176	5	153,250	5	435,708	7
Other	1,297,943	4	952,011	3	0	0	0	0	0	0
Total MSBMI	\$14,741,618	55	\$16,361,998	61	\$17,873,607	80	\$23,853,969	101	\$29,865,717	117
School of Dentistry										
Basic/Lab Research or Services	\$3,928,083	35	\$4,436,968	49	\$5,835,804	45	\$5,280,474	35	\$5,096,840	32
Clinical Research	0	0	0	0	1,555,280	23	2,353,058	23	3,725,780	21
Non-Research/Public Service	0	0	0	0	462,497	2	524,694	4	1,096,651	8
Training/Fellowship/Scholarship	332,732	5	156,040	6	307,908	3	511,066	6	191,597	2
Other	0	0	65,000	1	0	0	0	0	0	0
Total UTSD	\$4,260,815	40	\$4,658,008	56	\$8,161,489	73	\$8,669,292	68	\$10,110,868	63
Graduate School Biomedical Sciences										
Basic/Lab Research or Services	\$0	0	\$0	0	\$0	0	\$0	0	\$267,022	5
Clinical Research	0	0	0	0	0	0	\$0	0	\$551,076	3
Non-Research/Public Service	0	0	0	0	0	0	\$0	0	\$0	0
Training/Fellowship/Scholarship	0	0	0	0	0	0	\$0	0	\$0	0
Other	0	0	0	0	0	0	\$0	0	\$0	0
Total GSBS	\$0	0	\$0	0	\$0	0	\$0	0	\$818,098	8
McGovern Medical School										
Basic/Lab Research or Services	\$140,229,606	740	\$157,670,556	931	\$88,067,375	525	\$95,286,861	495	122,865,760	640
Clinical Research	0	0	0	0	76,127,568	864	64,875,376	845	92,493,925	939
Non-Research/Public Service	0	0	0	0	36,915,213	52	88,554,325	122	65,762,846	91
Training/Fellowship/Scholarship	3,363,487	55	4,486,715	47	5,592,495	72	5,296,824	65	7,372,204	78
Other	27,768,474	49	43,924,809	66	37,935	4	84,587	9	300,705	11
Total MMS	\$171,361,567	844	\$206,082,080	1,044	\$206,740,586	1,517	\$254,097,973	1,536	\$288,795,440	1,759
Cizik School of Nursing										
Basic/Lab Research or Services	\$1,769,879	15	\$2,276,945	18	\$0	1	\$0	0	\$135,045	3
Clinical Research	0	0	0	0	3,338,979	24	3,277,375	28	9,904,515	39
Non-Research/Public Service	0	0	0	0	178,325	3	1,698,389	7	1,272,913	3
Training/Fellowship/Scholarship	583,642	4	551,402	3	168,498	4	329,900	6	394,466	4
Other	250,197	4	242,577	9	35,684	1	33,412	1	441,033	2
Total CSON	\$2,603,718	23	\$3,070,924	30	\$3,721,486	33	\$5,339,076	42	\$12,147,972	51

continued **Contract & Grant Awards by Unit & Type FY 2020 - 2024**

	FY 2020		FY 2021		FY 2022		FY 2023		FY 2024	
	\$	#	\$	#	\$	#	\$	#	\$	#
School of Public Health										
Basic/Lab Research or Services	\$53,665,393	235	\$51,633,133	271	\$19,995,350	126	\$26,289,938	152	\$18,188,635	155
Clinical Research	0	0	0	0	47,321,646	186	33,433,163	184	48,660,968	223
Non-Research/Public Service	0	0	0	0	38,633,742	56	19,901,326	54	26,950,630	71
Training/Fellowship/Scholarship	1,192,969	5	4,363,622	14	3,128,514	12	3,159,985	13	3,220,612	11
Other	27,537,525	18	19,198,196	45	356,721	4	1,208,130	16	1,569,912	15
Total SPH	\$82,395,887	258	\$75,194,951	330	\$109,435,973	384	\$83,992,542	419	\$98,590,757	475
University Administration										
Basic/Lab Research or Services	\$15,280,130	5	\$0	0	\$19,576	1	\$194,055	1	\$0	0
Clinical Research	0	0	0	0	0	0	3,126,433	15	5,879,975	3
Non-Research/Public Service	0	0	0	0	15,700	1	0	0	0	0
Training/Fellowship/Scholarship	1,876,086	2	110,080	1	247,433	2	2,962,492	4	1,754,649	6
Other	1,995,703	2	7,914,206	6	0	0	0	0	0	0
Total UA	\$19,151,919	9	\$8,024,286	7	\$282,709	4	\$6,282,980	20	\$7,634,624	9
Behavioral Sciences Center										
Research (<i>includes Clinical Studies</i>)	\$0	0	\$0	0	\$0		\$0	0	\$0	0
Total BSC	\$0	0	\$0	0	\$0	0	\$0	0	\$0	0
Texas Epidemic Public Health Institute										
Basic/Lab Research or Services	-	-	-	-	\$0	0	\$0	0	\$0	0
Clinical Research	-	-	-	-	0	0	0	0	0	0
Non-Research/Public Service	-	-	-	-	20,000,000	1	20,000,000	1	0	0
Training/Fellowship/Scholarship	-	-	-	-	0	0	0	0	0	0
Other	-	-	-	-	0	0	0	0	0	0
Total TEPHI	-	-	-	-	\$20,000,000	1	\$20,000,000	1	\$0	0
UTHealth Houston Total										
Basic/Lab Research or Services	\$228,316,766	1,081	\$231,354,577	1,325	\$127,295,707	752	\$139,498,901	753	\$164,352,250	921
Clinical Research	0	0	0	0	131,723,667	1,116	\$113,427,307	1,117	\$168,578,407	1,246
Non-Research/Public Service	0	0	0	0	97,142,112	117	\$135,569,978	192	\$99,351,933	179
Training/Fellowship/Scholarship	7,348,916	71	9,740,871	73	9,624,024	98	\$12,413,517	99	\$13,369,236	108
Other	58,849,842	77	72,296,799	130	430,340	9	\$1,326,129	26	\$2,311,650	28
Grand Total	\$294,515,524	1,229	\$313,392,247	1,528	\$366,215,850	2,092	\$402,235,832	2,187	\$447,963,476	2,482

Contract & Grant Awards by Source FY 2020 - 2024

Source: Frank La, Sponsored Projects Administration

	FY 2020		FY 2021		FY 2022		FY 2023		FY 2024	
	\$	#	\$	#	\$	#	\$	#	\$	#
McWilliams School of Biomedical Informatics										
Federal	\$11,444,366	44	\$13,115,460	49	\$13,864,544	62	\$20,454,971	80	\$26,709,773	100
State	2,531,926	4	2,433,362	4	2,668,002	8	2,365,538	7	2,617,191	6
Local	0	0	0	0	0	0	18,000	1	0	
FND/NFP	644,826	5	583,400	4	853,874	6	810,576	5	334,742	9
Industry	120,500	2	229,776	2	487,187	4	204,884	8	204,011	2
Other	0	0	0	0	0	0	0	0	0	0
Private	0	0	0	0	0	0	0	0	0	0
Total MSBMI	\$14,741,618	55	\$16,361,998	59	\$17,873,607	80	\$23,853,969	101	\$29,865,717	117
School of Dentistry										
Federal	\$3,565,576	28	\$3,605,377	28	\$7,246,729	43	\$7,932,888	49	\$8,790,798	44
State	65,238	1	133,484	3	189,600	2	228,366	3	250,000	4
Local	0	0	0	0	0	0	0	0	1,036,356	12
FND/NFP	566,297	9	645,045	17	620,996	19	404,959	8	33,714	3
Industry	63,704	4	274,102	11	79,164	8	77,864	7	0	0
Other	0	0	0	0	25,000	1	25,215	1	0	0
Private	0	0	0	0	0	0	0	0	0	0
Total UTSD	\$4,260,815	42	\$4,658,008	59	\$8,161,489	73	\$8,669,292	68	\$10,110,868	63
Graduate School Biomedical Sciences										
Federal	\$0	0	\$0	0	\$0	0	\$0	0	\$362,604	2
State	0	0	0	0	0	0	0	0	0	0
FND/NFP	0	0	0	0	0	0	0	0	455,494	6
Private	0	0	0	0	0	0	0	0	0	0
Total GSBS	\$0	0	\$0	0	\$0	0	\$0	0	\$818,098	8
McGovern Medical School										
Federal	\$119,730,776	520	\$152,520,718	663	\$156,479,091	742	\$185,420,832	754	\$206,555,550	895
State	20,217,971	49	28,072,630	57	19,332,496	62	33,501,330	58	41,324,139	79
Local	104,930	4	42,918	2	189,597	3	271,366	3	379,067	2
FND/NFP	12,412,615	136	7,548,444	125	8,850,889	146	11,552,911	169	13,665,346	212
Industry	18,457,562	457	17,143,455	509	20,780,489	535	22,515,682	529	24,821,679	540
Other	437,713	14	753,915	23	1,108,024	29	835,852	23	2,049,659	31
Private	0	0	0	0	0	0	0	0	0	0
Total MMS	\$171,361,567	1,180	\$206,082,080	1,379	\$206,740,586	1,517	\$254,097,973	1,536	\$288,795,439	1,759
Cizik School of Nursing										
Federal	\$1,871,102	15	\$2,069,342	18	\$3,028,014	19	\$4,199,815	25	\$10,596,082	32
State	493,830	1	680,131	3	177,535	4	515,111	3	984,420	2
Local	0	0	0	0	10,000	2	0	1	0	0
FND/NFP	78,128	6	234,572	8	505,937	8	524,150	12	522,437	15
Industry	160,658	2	86,879	1	0	0	100,000	1	0	0
Other	0	0	0	0	0	0	0	0	45,033	2
Private	0	0	0	0	0	0	0	0	0	0
Total CSON	\$2,603,718	24	\$3,070,924	30	\$3,721,486	33	\$5,339,076	42	\$12,147,972	51

continued **Contract & Grant Awards by Source FY 2020 – 2024**

	FY 2020		FY 2021		FY 2022		FY 2023		FY 2024	
	\$	#	\$	#	\$	#	\$	#	\$	#
School of Public Health										
Federal	\$44,676,997	174	\$67,356,585	227	\$95,928,208	279	\$66,269,537	274	\$71,370,965	341
State	30,239,409	23	1,631,633	30	8,821,894	37	10,874,320	52	17,231,302	57
Local	377,408	4	302,363	8	445,395	7	243,856	6	315,418	7
FND/NFP	6,676,512	50	5,199,958	49	2,795,684	40	5,588,586	74	8,029,253	60
Industry	207,626	6	444,236	9	183,692	5	94,400	5	146,706	5
Other	217,935	2	257,301	5	1,261,100	16	921,843	8	1,497,113	5
Private	0	0	0	0	0	0	0	0	0	0
Total SPH	\$82,395,887	259	\$75,192,076	328	\$109,435,973	384	\$83,992,542	419	\$98,590,757	475
University Administration										
Federal	\$19,151,919	9	\$7,914,206	6	\$35,276	2	\$6,043,548	19	\$7,361,913	7
FND/NFP	0	0	110,080	1	247,433	2	239,432	1	272,711	2
Industry	0	0	0	0	0	0	0	0	0	0
Private	0	0	0	0	0	0	0	0	0	0
Total UA	\$19,151,919	9	\$8,024,286	7	\$282,709	4	\$6,282,980	20	\$7,634,624	9
Behavioral Sciences Center										
Federal	\$0	0	\$0	0	\$0	0	\$0	0	\$0	0
Private	0	0	0	0	0	0	0	0	0	0
Total BSC	\$0	0	\$0	0	\$0	0	\$0	0	\$0	0
Texas Epidemic Public Health Institute										
Federal	-	-	-	-	\$20,000,000	1	\$20,000,000	1	0	0
Private	-	-	-	-	0	0	0	0	0	0
Total TEPHI	-	-	-	-	\$20,000,000	1	\$20,000,000	1	\$0	0
UTHealth Houston Total										
Federal	\$200,440,736	790	\$246,581,688	991	\$296,581,862	1,148	\$310,321,591	1,202	\$331,747,685	1,421
State	53,548,374	78	32,951,240	97	31,189,527	113	\$47,484,665	123	\$62,407,052	148
Local	482,338	8	345,281	10	644,992	12	\$533,222	11	\$1,730,841	21
FND/NFP	20,378,378	206	14,211,419	203	13,874,813	221	\$19,120,614	269	\$23,313,697	307
Industry	19,010,050	471	18,288,528	533	21,530,532	552	\$22,992,830	550	\$25,172,396	547
Other	655,648	16	1,011,216	28	2,394,124	46	\$1,782,910	32	\$3,591,805	38
Private	0	0	0	0	0	0	\$0	0	\$0	0
Grand Total	\$294,515,524	1,569	\$313,389,372	1,862	\$366,215,850	2,092	\$402,235,832	2,187	\$447,963,476	2,482

NIH Awards by Unit FY 2015 - 2024

Source: Frank La, Sponsored Projects Administration

	FY 2015		FY 2016		FY 2017		FY 2018		FY 2019	
	Amount	#	Amount	#	Amount	#	Amount	#	Amount	#
McWilliams School of Biomedical Informatics	\$2,166,600	8	\$2,528,418	10	\$4,097,971	12	\$5,872,750	20	\$4,718,412	18
School of Dentistry	2,674,524	8	2,715,755	10	3,473,908	10	2,798,652	10	2,444,741	10
Graduate School of Biomedical Sciences	0	0	0	0	0	0	0	0	32,521	1
McGovern Medical School	50,983,796	145	65,929,242	196	60,719,239	230	66,918,386	235	74,982,817	226
Cizik School of Nursing	877,723	3	468,212	2	358,672	1	0	0	1,386,295	4
School of Public Health	20,663,212	39	18,626,712	32	17,381,015	26	17,758,537	36	18,578,288	48
University Administration	0	0	0	0	0	0	0	0	7,481,422	3
Grand Total	\$77,365,855	203	\$90,268,339	250	\$86,030,805	279	\$93,348,325	301	\$109,624,496	310

	FY 2020		FY 2021		FY 2022		FY 2023		FY 2024	
	Amount	#	Amount	#	Amount	#	Amount	#	Amount	#
McWilliams School of Biomedical Informatics	\$7,577,507	20	\$8,001,760	24	\$6,770,283.00	24	\$9,687,440.00	22	\$14,594,940.00	31
School of Dentistry	1,625,833	8	2,504,238	10	4,247,847	16	6,292,135	18	6,941,013	20
Graduate School of Biomedical Sciences	0	0	0	0	0	0	0	0	362,604	2
McGovern Medical School	68,780,097	208	95,672,595	302	96,886,767	344	95,918,675	311	124,303,532	408
Cizik School of Nursing	1,307,260	5	1,729,729	6	2,751,704	8	3,035,360	10	9,711,932	23
School of Public Health	20,737,411	57	21,724,160	59	23,065,976	78	24,257,560	68	21,816,537	78
University Administration	16,180,088	3	0	0	0	0	5,680,365	17	7,189,701	6
Grand Total	\$116,208,195	301	\$129,632,482	401	\$133,722,577	470	\$144,871,535	446	\$184,920,259	568

Federal Awards by Agency FY 2020 - 2024

Source: Frank La, Sponsored Projects Administration

Note: Data reflects the respective annual award amounts for the period it is effective. Clinical research projects that paid based on study subject enrollment were counted as awarded at 100 percent of the contracted amount in the year received, regardless of enrollment/earned revenue. Reporting is on a cash-basis method, reflecting revenue as it is received.

	FY 2020		FY 2021		FY 2022		FY 2023		FY 2024	
	\$	#	\$	#	\$	#	\$	#	\$	#
Public Health Service	\$119,562,172	314	\$134,304,301	413	\$152,135,565	482	\$150,044,847	462	\$195,147,659	600
NASA	0	0	124,836	1	119,685	1	184,267	2	395,168	3
National Science Foundation	963,340	5	1,484,180	8	916,998	9	1,704,824	14	2,593,172	20
Other Federal-Direct	9,843,702	24	16,620,063	30	5,145,590	28	7,607,625	33	14,347,321	43
Federal Subcontracts	70,071,522	408	94,048,309	505	138,264,024	628	150,780,028	691	119,264,365	755
Grand Total	\$200,440,736	751	\$246,581,689	957	\$296,581,862	1,148	\$310,321,591	1,202	\$331,747,685	1,421

Principal Investigators by Unit FY 2015 - 2024

Source: Frank La, Sponsored Projects Administration

Note: Data represent the total number of PIs who held an active grant during the noted fiscal year.

	FY 2015	FY 2016	FY 2017	FY 2018	FY 2019	FY 2020	FY 2021	FY 2022	FY 2023	FY 2024
McWilliams School of Biomedical Informatics	12	12	15	17	20	17	19	20	25	25
School of Dentistry	18	17	16	19	25	25	30	32	32	26
Graduate School of Biomedical Sciences	1	3	0	0	2	0	0	0	0	2
McGovern Medical School	297	331	366	388	406	421	450	490	503	554
Cizik School of Nursing	17	18	10	16	15	15	14	19	24	20
School of Public Health	95	97	93	95	96	105	113	116	121	127
Behavioral Sciences Center	0	0	0	0	0	0	0	0	0	0
Texas Epidemic Public Health Institute	-	-	-	-	-	-	-	1	1	0
University Administration	2	2	1	0	1	4	2	3	2	5
Grand Total	442	480	501	535	565	587	628	681	708	759

Sponsored Project Activity Report FY 2024

Source: Scott Barnett, Accounting & Budget

Note: Data represent amounts expended, not awarded.

		Grants & Contracts		Gifts	Endowment
	Total	Direct Costs	Indirect Costs	Direct Costs	Direct Costs
McWilliams School of Biomedical Informatics	\$24,947,511	17,827,430	6,036,312	476,510	607,259
School of Dentistry	\$11,279,788	7,776,604	1,968,096	379,154	1,155,933
McGovern Medical School	\$361,048,045	269,648,825	58,917,727	10,779,884	21,701,610
Cizik School of Nursing	\$9,855,509	6,047,226	1,476,351	782,006	1,549,926
School of Public Health	\$95,890,438	75,731,014	17,244,947	1,530,001	1,384,476
Texas Epidemic Public Health Institute	\$8,259,645	6,725,558	1,534,087	0	0
Behavioral Sciences Center	\$134,698	4,419	0	0	130,279
University Administration	\$13,408,920	10,637,852	1,473,909	257,136	1,040,022
Grand Total	\$524,824,555	\$394,398,929	\$88,651,429	\$14,204,692	\$27,569,506

Patient Care

McGovern Medical School Outpatient Clinical Activity - Visits	55
Un-sponsored Medical & Dental Charity Care Provided by Faculty	55
School of Dentistry Clinical Activity: Patient Visits	56
School of Dentistry Clinical Activity: Patient Treatments	57
UT Health Services Patient Visits	58
Behavioral Sciences Campus Clinical Activity	58
Medical Practice Plan Summary of Operations	59

McGovern Medical School Outpatient Clinical Activity - Visits FY 2015 - 2024

Source: Performance Measures Report to the Legislative Budget Board, November 2023

Note: The COVID-19 pandemic beginning in March 2020 had a profound effect on the ability of UTHealth Houston medical, dental and nursing practitioners to perform patient care. FY 2020 decreases are the direct result of clinic closures and subsequent reductions in patient visits due to social distancing requirements. These effects are notable on the patient care tables that follow in this chapter.

	Total Outpatient Visits
FY 2015	1,647,382
FY 2016	1,757,911
FY 2017	1,801,859
FY 2018	1,837,896
FY 2019	1,874,654
FY 2020	1,698,436
FY 2021	1,791,849
FY 2022	1,811,559
FY 2023	1,838,732
FY 2024	1,847,925

Un-sponsored Medical & Dental Charity Care Provided by Faculty FY 2020-2024

Sources: Performance Measures Report to the Legislative Budget Board, November 2023, and Shalizeh Patel, DDS, MEd, School of Dentistry

Definition of Un-sponsored Charity Care: Total dollar amount of indigent patient charges provided in hospitals and clinics contracted with or owned, operated, and funded by the health-related institutions during the reporting period.

	McGovern Medical School	School of Dentistry	Total Cost of Un-sponsored Charity Care
FY 2019	46,245,423	1,618,120	\$47,863,543
FY 2020	9,201,116	1,512,339	\$10,713,415
FY 2021	28,724,929	894,691	\$29,619,620
FY 2022	14,788,429	1,648,011	\$16,436,440
FY 2023	78,957,739	1,663,089	\$80,620,828
FY 2024	35,842,367	1,497,604	\$37,339,971

School of Dentistry Clinical Activity: Patient Visits FY 2017 - 2024

Source: Shalizeh Patel, DDS, MEd, School of Dentistry

	FY 2017	FY 2018	FY 2019	FY 2020	FY 2021	FY 2022	FY 2023	FY 2024
School of Dentistry Clinics								
Main Campus (Student & Resident Clinics)	71,000	65,919	69,183	51,655	61,157	66,504	69,417	71,394
UT Dentists - Group Practice	7,481	7,857	9,738	6,566	7,640	8,816	13,872	10,267
UTHealth Pediatric Dentistry	6,504	7,630	6,580	4,527	5,982	6,566	6,857	6,493
UT OMS Scurlock Tower	1,870	3,444	1,884	1,424	2,087	1,598	1,947	1,705
University Dental Center (AEGD/GPR Resident Clinic)	7,714	5,568	6,249	4,541	5,618	5,593	5,279	5,120
Subtotal Clinics	94,569	90,418	93,634	68,713	82,484	89,077	97,372	94,979
Outreach Clinics								
Access Health	161	345	0	0	0	0	0	0
Bering Omega Dental Clinic	263	261	240	129	0	0	0	0
Brazos Valley	0	0	0	0	0	0	0	0
City of Houston La Casa	1,069	347	513	658	0	289	313	283
City of Houston Sharpstown	636	316	488	893	0	430	413	383
City of Houston Sunnyside	0	0	0	0	0	7	63	214
Harris County Health Department - DH Student	163	181	31	123	0	0	175	132
Harris Health System Dental Services - UT Dentists	0	0	0	0	19,517	23,330	24,710	27,211
Harris Health System - Dental Center: Student (DDS)/Resident Activities	0	0	0	0	55	696	1,375	611
Harris Health System HealthCare for the Homeless Program- UT Dentists	0	0	0	0	0	0	2,378	2,139
Harris Health System - Monroe Clinic: Student (DDS)/Resident Activities	0	0	0	0	1,450	3,235	1,963	1,979
Geriatric Education Sites	77	98	83	44	0	0	0	0
HOPE Clinic	0	0	0	0	0	0	2339	3,869
Healthcare for the Homeless - Houston	534	489	406	380	326	163	196	225
Mobile Dental Van	1,355	1,539	1,990	1,271	767	829	1,102	1,214
Legacy Community Health	0	0	0	0	0	0	39	133
San Jose Clinic	346	567	485	157	206	390	474	434
Spring Branch Community Health Center	0	0	0	138	209	0	0	0
TCH The Centers for Children & Women	5,724	7,348	6,811	3,412	2,484	13	362	800
Harris County Resources for Children & Adults	0	0	0	0	0	316	256	353
TOMAGWA HealthCare Ministries	444	541	667	477	498	435	569	370
Veterans Administration Medical Center	367	0	0	0	0	0	0	0
Subtotal Outreach	11,139	12,032	11,714	7,682	25,512	30,133	36,727	40,350
Hospitals								
Harris Health System - Ben Taub	4,658	5,057	5,037	3,207	3,563	5,625	5,766	3,808
Harris Health System - Lyndon B. Johnson	5,850	6,293	5,591	4,335	3,667	5,341	4,356	3,484
Memorial Hermann -TMC	206	139	838	167	234	688	408	787
Houston Methodist	89	65	83	33	30	234	98	246
Veterans Administration Medical Center	4,452	3,464	3,791	2,641	2,430	2,130	3,014	4,261
Subtotal Hospitals	15,255	15,018	15,340	10,383	9,924	14,018	13,642	12,586
Grand Total Patient Visits	120,963	117,468	120,688	86,778	117,920	133,228	147,741	147,915

School of Dentistry Clinical Activity: Patient Treatments FY 2017 - 2024

Source: Shalizeh Patel, DDS, MEd, School of Dentistry

	FY 2017	FY 2018	FY 2019	FY 2020	FY 2021	FY 2022	FY 2023	FY 2024
School of Dentistry Clinics								
Main Campus (Student & Resident Clinics)	217,299	191,451	208,858	160,484	208,009	222,023	247,022	274,547
UT Dentists - Group Practice	25,136	23,387	26,144	10,281	28,924	35,100	46,592	45,084
UTHealth Pediatric Dentistry	42,748	49,599	45,898	35,309	50,040	52,326	49,508	44,722
UT OMS Scurlock Tower	1,870	4,184	4,642	4,087	5,890	5,133	5,780	5,348
University Dental Center (AEGD/GPR Resident Clinic)	25,892	22,341	23,258	18,328	25,221	23,865	24,000	23,812
Subtotal Clinics	312,945	290,962	308,800	228,489	318,084	338,447	372,902	393,513
Outreach Clinics								
Access Health	205	457	0	0	0	0	0	0
Bering Omega Dental Clinic	185	135	245	143	0	0	0	0
Brazos Valley	0	0	0	0	0	0	0	0
City of Houston La Casa	3,984	2,480	1,920	5,234	0	1,257	1,579	860
City of Houston Sharpstown	1,642	2,403	1,364	4,358	0	2,110	1,860	1,747
City of Houston Sunnyside	0	0	0	0	0	48	313	802
Harris County Health Department - DH Student	359	520	311	360	0	0	707	572
Harris Health System Dental Services - UT Dentists	0	0	0	0	65,625	95,665	94,571	93,574
Harris Health System - Dental Center: Student (DDS)/Resident Activities	0	0	0	0	338	2,964	1,741	2,349
Harris Health System HealthCare for the Homeless Program- UT Dentists	0	0	0	0	0	0	2,378	900
Harris Health System - Monroe Clinic: Student (DDS)/Resident Activities	0	0	0	0	1,091	1,240	687	319
Geriatric Education Sites	77	98	83	44	0	0	0	0
HOPE Clinic	0	0	0	0	0	0	2,339	4,367
Healthcare for the Homeless - Houston	1,003	1,192	527	608	617	385	429	312
Mobile Dental Van	3,599	7,134	9,746	4,216	2,494	2,569	3,530	3,117
Legacy Community Health	0	0	0	0	0	0	46	128
San Jose Clinic	443	767	498	163	347	722	878	839
Spring Branch Community Health Center	0	0	0	152	349	-0-	0	0
TCH The Centers for Children & Women	25,131	31,663	31,488	14,102	11,253	57	2,836	n/a
Harris County Resources for Children & Adults	0	0	0	0	0	1,264	380	n/a
TOMAGWA HealthCare Ministries	745	1,192	1,457	940	1,349	1,406	1,365	476
Veterans Administration Medical Center	829	0	0	0	0	0	0	0
Subtotal Outreach	38,202	48,041	47,639	30,320	83,463	109,687	115,639	110,362
Hospitals								
Harris Health System - Ben Taub	2,215	1,322	3,132	4,484	5,970	5,625	5,791	4,925
Harris Health System - Lyndon B. Johnson	5,850	1,108	3,511	3,485	4,910	6,196	4,585	4,309
Memorial Hermann -TMC	841	139	838	167	234	688	1,849	1,982
Houston Methodist	89	65	83	33	30	234	256	421
Veterans Administration Medical Center	8,834	10,699	9,267	5,107	5,709	4,248	4,108	5,974
Subtotal Hospitals	17,829	13,333	16,831	13,276	16,853	16,991	16,589	17,611
Grand Total Patient Treatments	368,976	352,336	373,270	272,085	418,400	465,125	505,130	521,486

UT Health Services Patient Visits FY 2015 - 2024

Source: Joy Harrison, DNP, MSN, RN, Cizik School of Nursing

¹ Effective FY 2023 Provider visits include private patient visits.

	FY 2015	FY 2016	FY 2017	FY 2018	FY 2019	FY 2020	FY 2021	FY 2022	FY 2023	FY 2024
Employee Health Activity Totals	7,241	7,372	5,486	5,360	7,983	11,171	7,781	5,676	9,766	10,427
Pre-employment Clearances									3,994	3,007
Occupational Health Program Enrollment									203	1,064
Immunizations Administered									1,902	414
Tuberculosis Testing									1,991	1,307
Flu Vaccine Administration									1,676	1,855
Private Patient Visits	5,347	9,571	7,092	6,156	7,654	6,613	3,566	2,070	n/a ¹	n/a ¹
Provider Visits									3,336	3,778
Nurse Visits									1,058	1,184
Total Visits	12,588	16,943	12,578	11,516	15,637	17,784	11,347	7,746	14,160	15,389

Behavioral Sciences Campus Clinical Activity FY 2015-2024

Source: Lois Pierson, CPA, Dunn Behavioral Sciences Center

Note: Effective FY 2022, totals include both the UT Harris County Psychiatric Center and the Dunn Behavioral Sciences Center, collectively known as the Behavioral Sciences Campus.

	FY 2015	FY 2016	FY 2017	FY 2018	FY 2019
Average Daily Census	224.70	218.27	211.3	210.9	220.6
Number of Admissions	8,808	9,583	8,601	8,583	8,552
Patient Days	81,655	79,887	77,110	76,973	80,503
Average Length of Stay	9.3	8.3	9	9	9
	FY 2020	FY 2021	FY 2022	FY 2023	FY 2024
Average Daily Census	206.5	202.3	221.1	339.6	430.0
Number of Admissions	8,396	7,713	6,406	8,011	9,067
Patient Days	75,385	73,843	80,690	123,960	157,385
Average Length of Stay	9	10	13	15	17

Medical Practice Plan Summary of Operations *for the year ending August 31, 2024*

Source: Scott Barnett, Accounting & Budget

Note: Includes the operations of the nonprofit healthcare corporation.

Operating Revenues:

Gross Patient Charges		
Gross Patient Charges Related to Uncompensated Care	\$1,705,173,866.50	
Other Gross Patient Charges	980,071,758.43	
Total Gross Patient Charges		2,685,245,624.93
Less: Discounts and Allowances		
Contractual Allowances - Medicaid	(321,626,743.02)	
Contractual Allowances - Medicare	(619,072,494.98)	
Contractual Allowances - Managed Care & Other Insurance	(768,627,464.59)	
Other Unreimbursed Medical Charges	(293,665,575.04)	
Bad Debt Expense	(122,344,532.63)	
Total Discounts and Allowances		(2,125,336,810.26)
Net Patient Revenues		559,908,814.67
Contractual Revenues		793,044,068.50
Other Operating Revenues		55,346,627.70
Total Operating Revenues		1,408,299,510.87

Operating Expenses:

Faculty Salaries	575,235,551.59
Staff Salaries	380,743,135.28
Resident Salaries	17,107,897.60
Fringe Benefits	206,889,576.70
Maintenance and Operations	117,865,410.89
Professional Liability Insurance	1,050,047.42
Travel	4,883,336.25
Official Functions	1,581,891.49
Other Expenses	18,797,103.00

Total Operating Expenses	1,324,153,950.22
---------------------------------	-------------------------

Operating Income (Loss)	84,145,560.65
--------------------------------	----------------------

Nonoperating Revenues (Expenses):

Investment Income	14,111,946.91
Net Increase (Decrease) in Fair Value of Investments	444,568.21
Interest Expense on Capital Asset Financings	(2,081,968.34)
Other Nonoperating Revenues (Expenses)	3,973,762.98

Net Nonoperating Revenues (Expenses)	16,448,309.76
---	----------------------

Income (Loss) Before Other Revenues, Expenses, Gains or Losses	100,593,870.41
---	-----------------------

Transfers In:

Interfund/Interagency	(92,970,830.64)
-----------------------	-----------------

Transfers Out:

Debt Service	(4,610,150.38)
Capital Outlay	(5,427,544.97)
Interfund/Interagency	(72,330.50)
Balance Sheet Transactions Between Funds	(22,439,896.95)

Change in Net Position	(24,926,883.03)
-------------------------------	------------------------

Net Position - September 1, 2023	84,521,545.08
----------------------------------	---------------

Net Position - August 31, 2024	\$59,594,662.05
---------------------------------------	------------------------

This page is intentionally blank

Employees

Faculty by Full-time/Part-time Status	63
Without Salary Faculty Appointments	63
Faculty by Race/Ethnicity & Gender	64
Faculty by Tenure Status & Gender	65
Classified Staff by Race/Ethnicity & Gender	66
Administrative & Professional (A&P) Staff by Race/Ethnicity & Gender	67
Employees by Employment Category	68
Graduate School of Biomedical Sciences Faculty Membership by Institutional Affiliation	70
Full-time Equivalent (FTE) Employees by Source of Funds	71
Faculty Honors	72

Faculty by Full-time/Part-time Status *Fall 2020 - 2024*

Source: PeopleSoft HCM, Certified CBM008 Faculty Report to the Texas Higher Education Coordinating Board, as of October 1, 2024

Notes (pertains to all faculty and employee tables):

- Faculty in the Graduate School of Biomedical Sciences are counted in their school of primary appointment.
- McGovern Medical School counts include Institute of Molecular Medicine faculty and/or staff, depending on the table presented.
- Per federal guidelines, postsecondary educational institutions must report data using nine specified reporting categories, which include: Nonresident aliens (for whom neither race nor ethnicity is reported), Hispanic/Latino of any race, For individuals who are non-Hispanic/Latino: American Indian or Alaska Native, Asian, Black or African American, Native Hawaiian or Other Pacific Islander, White, Two or more races, and Race and ethnicity unknown.
- Academic A&P are included in faculty totals since incumbents must hold a faculty position in order to be eligible to serve in an Academic A&P role and are counted as faculty in the CBM008 certified faculty report to the THECB.

School or Unit	Fall 2020		Fall 2021		Fall 2022		Fall 2023		Fall 2024		Total
	FT	PT	FT	PT	FT	PT	FT	PT	FT	PT	
McWilliams School of Biomedical Informatics	40	3	39	3	44	6	53	5	52	6	58
School of Dentistry	115	86	118	80	116	92	114	106	108	114	222
Graduate School of Biomedical Sciences	-	-	-	-	2	0	2	0	2	0	2
McGovern Medical School	1,499	85	1,490	77	1,653	70	1,734	63	1,847	60	1,907
Cizik School of Nursing	91	63	91	58	98	48	100	41	92	46	138
School of Public Health	140	29	145	27	153	29	173	29	174	26	200
University Administration	5	0	5	0	13	0	7	0	5	0	5
Grand Total	1,890	266	1,888	245	2,079	245	2,183	244	2,280	252	2,532

Without Salary Faculty Appointments *FY 2015 - 2024*

Source: Johnson George, PhD, MBA, McGovern Medical School

Note: Effective FY 2023, data do not include cross-appointments (UTHealth Houston faculty appointed at more than one UTHealth Houston school).

School/Unit	FY 2015	FY 2016	FY 2017	FY 2018	FY 2019	FY 2020	FY 2021	FY 2022	FY 2023	FY 2024
McWilliams School of Biomedical Informatics	39	41	40	41	43	40	39	34	0	40
School of Dentistry	100	106	108	111	110	134	133	114	53	81
Graduate School of Biomedical Sciences	370	371	379	385	388	648	378	356	146	90
McGovern Medical School	556	560	584	587	622	352	506	313	308	320
Cizik School of Nursing	53	53	54	54	58	55	39	38	12	10
School of Public Health	304	283	304	315	283	308	204	176	98	144
University Administration	0	0	0	0	0	0	0	0	1	1
Grand Total	1,422	1,414	1,469	1,493	1,504	1,537	1,299	1,031	618	686

Faculty by Race/Ethnicity & Gender Fall 2021 – 2024

Source: PeopleSoft HCM, Certified CBM008 Faculty Report to the Texas Higher Education Coordinating Board, as of October 1, 2023

	Fall 2021			Fall 2022			Fall 2023			Fall 2024		
	Male	Female	Total	Male	Female	Total	Male	Female	Total	Male	Female	Total
McWilliams School of Biomedical Informatics												
Asian	16	7	23	18	9	27	24	9	33	23	8	31
Black	0	1	1	1	1	2	1	1	2	1	2	3
Hispanic	0	1	1	1	1	2	1	1	2	1	0	1
White	9	6	15	11	7	18	11	8	19	11	10	21
International	1	0	1	1	0	1	1	0	1	1	0	1
Unidentified	0	0	0	0	0	0	0	1	1	0	1	1
Pacific Islander	1	0	1	0	0	0	0	0	0	0	0	0
Total MSBMI	27	15	42	32	18	50	38	20	58	37	21	58
School of Dentistry												
Asian	19	34	53	21	34	55	23	36	59	22	36	58
Black	5	7	12	6	8	14	5	8	13	5	9	14
Hispanic	9	16	25	11	16	27	12	17	29	12	18	30
Amer. Indian	1	0	1	1	0	1	1	0	1	1	0	1
White	71	33	104	66	35	101	65	40	105	60	43	103
International	1	1	2	5	2	7	6	5	11	8	6	14
Unidentified	1	0	1	0	3	3	1	1	2	1	1	2
Total UTSD	107	91	198	110	98	208	113	107	220	109	113	222
Graduate School of Biomedical Sciences												
Black	-	-	-	0	1	1	0	1	1	0	1	1
White	-	-	-	1	0	1	1	0	1	1	0	1
Total GSBS	-	-	-	1	1	2	1	1	2	0	0	2
McGovern Medical School												
Asian	297	230	527	336	264	600	357	268	625	369	289	658
Black	27	60	87	30	67	97	27	73	100	32	80	112
Hispanic	85	79	164	92	88	180	103	96	199	107	92	199
Amer. Indian	3	0	3	3	0	3	3	0	3	2	0	2
White	411	297	708	427	319	746	427	333	760	455	361	816
International	27	24	51	32	31	63	37	29	66	41	32	73
Unidentified	14	13	27	18	16	34	20	24	44	21	26	47
Total MMS	864	703	1,567	938	785	1,723	974	823	1,797	1,027	880	1,907
Cizik School of Nursing												
Asian	3	21	24	2	17	19	2	20	22	2	22	24
Black	2	26	28	2	29	31	1	25	26	1	23	24
Hispanic	1	11	12	1	13	14	3	21	24	4	20	24
White	8	71	79	6	72	78	6	60	66	7	55	62
International	1	1	2	1	0	1	1	0	1	1	0	1
Unidentified	0	4	4	0	3	3	0	2	2	1	2	3
Total CSON	15	134	149	12	134	146	13	128	141	16	122	138
School of Public Health												
Asian	18	18	36	21	19	40	21	24	45	21	25	46
Black	2	5	7	3	6	9	3	7	10	3	8	11
Hispanic	5	19	24	9	21	30	10	24	34	9	24	33
Amer. Indian	1	0	1	1	0	1	1	0	1	1	0	1
White	42	56	98	42	52	94	41	60	101	43	57	100
International	1	0	1	1	1	2	2	1	3	2	1	3
Unidentified	1	4	5	1	5	6	3	5	8	4	2	6
Total SPH	70	102	172	78	104	182	81	121	202	83	117	200
University Administration												
Asian	0	0	0	0	0	0	2	0	2	1	0	1
Black	0	0	0	0	1	1	0	0	0	0	0	0
Hispanic	1	0	1	1	0	1	0	0	0	0	0	0
White	2	2	4	5	5	10	3	2	5	2	2	4
Unidentified	0	0	0	0	1	1	0	0	0	0	0	0
Total UA	3	2	5	6	7	13	5	2	7	3	2	5
UTHealth Houston												
Asian	353	310	663	398	343	741	429	357	786	438	380	818
Black	36	99	135	42	113	155	37	115	152	42	123	165
Hispanic	101	126	227	115	139	254	129	159	288	133	154	287
Amer. Indian	5	0	5	5	0	5	5	0	5	4	0	4
White	543	465	1,008	558	490	1,048	554	503	1,057	579	528	1,107
Pacific Islander	1	0	1	0	0	0	0	0	0	0	0	0
International	31	26	57	40	34	74	47	35	82	53	39	92
Unidentified	16	21	37	19	28	47	24	33	57	27	32	59
Grand Total	1,086	1,047	2,133	1,177	1,147	2,324	1,225	1,202	2,427	1,276	1,256	2,532

Faculty by Tenure Status & Gender Fall 2021 – 2024

Source: PeopleSoft HCM, Certified CBM008 Faculty Report to the Texas Higher Education Coordinating Board, as of October 1, 2023

	Fall 2021			Fall 2022			Fall 2023			Fall 2024		
	M	F	Total	M	F	Total	M	F	Total	M	F	Total
McWilliams School of Biomedical Informatics												
Tenured	8	2	10	11	4	15	11	5	16	11	4	15
Non-tenured, On Track	5	3	8	3	1	4	3	2	5	4	4	8
Non Tenure Track	14	10	24	18	13	31	24	13	37	22	13	35
Total MSBBI	27	15	42	32	18	50	38	20	58	37	21	58
School of Dentistry												
Tenured	21	6	27	26	4	30	21	4	25	21	4	25
Non-tenured, On Track	11	4	15	9	5	14	8	6	14	4	5	9
Non Tenure Track	75	81	156	75	89	164	84	97	181	84	104	188
Total UTSD	107	91	198	110	98	208	113	107	220	109	113	222
Graduate School of Biomedical Sciences												
Tenured	0	0	0	1	0	1	1	0	1	1	0	1
Non Tenure Track	0	0	0	0	1	1	0	1	1	0	1	1
Total GSBS	0	0	0	1	1	2	1	1	2	1	1	2
McGovern Medical School												
Tenured	145	46	191	135	47	182	137	49	186	153	57	210
Non-tenured, On Track	41	27	68	42	28	70	54	42	96	57	37	94
Non Tenure Track	678	630	1,308	761	710	1,471	783	732	1,515	817	786	1,603
Total MMS	864	703	1,567	938	785	1,723	974	823	1,797	1,027	880	1,907
Cizik School of Nursing												
Tenured	1	7	8	1	8	9	1	8	9	1	9	10
Non-tenured, On Track	0	3	3	0	6	6	0	6	6	0	8	8
Non Tenure Track	14	124	138	11	120	131	12	114	126	15	105	120
Total CSON	15	134	149	12	134	146	13	128	141	16	122	138
School of Public Health												
Tenured	37	36	73	37	37	74	38	35	73	35	35	70
Non-tenured, On Track	17	25	42	17	21	38	22	33	55	30	31	61
Non Tenure Track	16	41	57	24	46	70	21	53	74	18	51	69
Total SPH	70	102	172	78	104	182	81	121	202	83	117	200
University Administration												
Tenured	0	0	0	4	1	5	2	0	2	0	0	0
Non Tenure Track	3	2	5	2	6	8	3	2	5	3	2	5
UA Total	3	2	5	6	7	13	5	2	7	3	2	5
UTHealth Houston												
Tenured	212	97	309	215	101	316	211	101	312	222	109	331
Non-tenured, On Track	74	62	136	71	61	132	87	89	176	95	85	180
Non Tenure Track	800	888	1,688	891	985	1,876	927	1,012	1,939	959	1,062	2,021
Grand Total	1,086	1,047	2,133	1,177	1,147	2,324	1,225	1,202	2,427	1,276	1,256	2,532

Classified Staff by Race/Ethnicity & Gender *Fall 2024*

Source: PeopleSoft HCM, as of October 1, 2024

Note: Totals do not include casual or student employees.

	Female	Male	Total
McWilliams School of Biomedical Informatics			
Amer. Indian	0	0	0
Asian	16	19	35
Black	15	2	17
Hispanic	18	10	28
Multi-Racial	0	0	0
Unidentified	3	1	4
Pacific Islander	0	0	0
White	26	12	38
Total MSBMI	78	44	122

School of Dentistry			
Amer. Indian	0	0	0
Asian	26	9	35
Black	53	4	57
Hispanic	89	15	104
Multi-Racial	0	0	0
Unidentified	4	2	6
Pacific Islander	0	0	0
White	20	8	28
Total UTSD	192	38	230

Graduate School of Biomedical Sciences			
Amer. Indian	0	0	0
Asian	3	1	4
Black	5	0	5
Hispanic	4	2	6
Multi-Racial	0	0	0
Unidentified	0	0	0
Pacific Islander	0	0	0
White	5	2	7
Total GSBS	17	5	22

McGovern Medical School			
Amer. Indian	9	1	10
Asian	517	228	745
Black	1,128	124	1,252
Hispanic	1,621	213	1,834
Multi-Racial	0	0	0
Unidentified	138	35	173
Pacific Islander	5	1	6
White	1,139	276	1,415
Total MMS	4,557	878	5,435

Cizik School of Nursing			
Amer. Indian	0	0	0
Asian	10	1	11
Black	35	8	43
Hispanic	24	10	34
Multi-Racial	0	0	0
Unidentified	3	1	4
Pacific Islander	0	0	0
White	22	11	33
Total CSON	94	31	125

	Female	Male	Total
School of Public Health			
Amer. Indian	0	0	0
Asian	44	23	67
Black	65	11	76
Hispanic	169	39	208
Multi-Racial	0	0	0
Unidentified	9	8	17
Pacific Islander	0	0	0
White	93	36	129
Total SPH	380	117	497

University Administration			
Amer. Indian	0	2	2
Asian	45	71	116
Black	157	111	268
Hispanic	115	123	238
Multi-Racial	0	0	0
Unidentified	23	18	41
Pacific Islander	0	0	0
White	130	162	292
Total Admin	470	487	957

Texas Epidemic Public Health Institute			
Amer. Indian	0	0	0
Asian	5	0	5
Black	2	0	2
Hispanic	12	4	16
Multi-Racial	0	0	0
Unidentified	1	0	1
Pacific Islander	0	0	0
White	9	0	9
Total TEPHI	29	4	33

Behavioral Sciences Campus			
Amer. Indian	0	1	1
Asian	56	58	115
Black	327	223	550
Hispanic	49	27	76
Multi-Racial	0	0	0
Unidentified	16	8	24
Pacific Islander	1	0	1
White	45	27	72
Total BSC	494	344	838

UTHealth Houston			
Amer. Indian	9	4	13
Asian	722	410	1,132
Black	1,787	483	2,270
Hispanic	2,101	443	2,544
Multi-Racial	0	0	0
Unidentified	197	73	270
Pacific Islander	6	1	7
White	1,489	534	2,023
Grand Total	6,311	1,948	8,259

Administrative & Professional (A&P) Staff by Race/Ethnicity & Gender *Fall 2024*

Source: PeopleSoft HCM, as of October 1, 2024

Note: Totals include both Management and General A&P; Academic A&P are included in faculty totals since incumbents must hold a faculty position in order to be eligible to serve in an Academic A&P role and are counted as faculty in the CBM008 certified faculty report to the THECB.

	Female	Male	Total
McWilliams School of Biomedical Informatics			
Amer. Indian	0	0	0
Asian	1	1	2
Black	1	0	1
Hispanic	2	0	2
Multi-Racial	0	0	0
Unidentified	0	0	0
Pacific Islander	0	0	0
White	2	2	4
Total MSBMI	6	3	9
School of Dentistry			
Amer. Indian	0	0	0
Asian	7	3	10
Black	3	1	4
Hispanic	3	2	5
Multi-Racial	0	0	0
Unidentified	4	1	5
Pacific Islander	0	0	0
White	6	2	8
Total UTSD	23	9	32
Graduate School of Biomedical Sciences			
Amer. Indian	0	0	0
Asian	2	0	2
Black	0	0	0
Hispanic	1	0	1
Multi-Racial	0	0	0
Unidentified	0	0	0
Pacific Islander	0	0	0
White	1	1	2
Total GSBS	4	1	5
McGovern Medical School			
Amer. Indian	0	1	1
Asian	63	45	108
Black	35	5	40
Hispanic	37	21	58
Multi-Racial	0	0	0
Unidentified	13	12	25
Pacific Islander	0	0	0
White	90	72	162
Total MMS	238	156	394
Cizik School of Nursing			
Amer. Indian	0	0	0
Asian	0	0	0
Black	2	0	2
Hispanic	0	0	0
Multi-Racial	0	0	0
Unidentified	0	0	0
Pacific Islander	0	0	0
White	3	1	4
Total CSON	5	1	6

	Female	Male	Total
School of Public Health			
Amer. Indian	0	0	0
Asian	0	0	0
Black	0	0	0
Hispanic	0	2	2
Multi-Racial	0	0	0
Unidentified	0	0	0
Pacific Islander	0	0	0
White	3	1	4
Total SPH	3	3	6
University Administration			
Amer. Indian	0	0	0
Asian	3	4	7
Black	13	3	16
Hispanic	9	2	11
Multi-Racial	0	0	0
Unidentified	2	3	5
Pacific Islander	0	0	0
White	47	28	75
Total Admin	74	40	114
Texas Epidemic Public Health Institute			
Amer. Indian	0	0	0
Asian	0	0	0
Black	0	0	0
Hispanic	0	0	0
Multi-Racial	0	0	0
Unidentified	0	0	0
Pacific Islander	0	0	0
White	0	0	0
Total TEPHI	0	0	0
Behavioral Sciences Campus			
Amer. Indian	0	0	0
Asian	1	0	1
Black	5	3	8
Hispanic	0	0	0
Multi-Racial	0	0	0
Unidentified	0	1	1
Pacific Islander	0	0	0
White	7	2	9
Total BSC	13	6	19
UTHealth Houston			
Amer. Indian	0	1	1
Asian	77	53	130
Black	59	12	71
Hispanic	52	27	79
Multi-Racial	0	0	0
Unidentified	19	17	36
Pacific Islander	0	0	0
White	159	109	268
Grand Total	366	219	585

Employees by Employment Category *Fall 2021 – 2024*

Sources: PeopleSoft HCM, Certified CBM008 Faculty Report to the Texas Higher Education Coordinating Board, as of October 1, 2024

Notes:

¹ A&P includes both Management and General Administrative & Professional staff; Academic A&P are included in faculty totals since incumbents must hold a faculty position in order to be eligible to serve in an Academic A&P role and are counted as faculty in the CBM008 certified faculty report to the THECB.

Totals do not include casual or student employees.

	Fall 2021	Fall 2022	Fall 2023	Fall 2024		Fall 2021	Fall 2022	Fall 2023	Fall 2024
McWilliams School of Biomedical Informatics					School of Public Health				
Faculty	42	50	58	58	Faculty	172	182	202	200
A&P ¹	8	9	8	9	A&P ¹	4	5	6	6
Classified	77	82	84	122	Classified	424	480	451	497
Residents	0	0	0	0	Residents	4	4	5	5
MSBMI Total	127	141	150	189	SPH Total	604	671	664	708
School of Dentistry					University Administration				
Faculty	198	208	220	222	Faculty	5	13	7	5
A&P ¹	20	23	27	32	A&P ¹	101	107	106	114
Classified	198	237	238	230	Classified	790	892	882	957
Residents	20	21	20	23	Residents	0	0	0	0
UTSD Total	436	489	505	507	UA Total	896	1,012	995	1,076
Graduate School of Biomedical Sciences					Texas Epidemic Public Health Institute				
Faculty	0	2	2	2	Faculty	-	0	0	0
A&P ¹	3	5	4	5	A&P ¹	-	0	0	0
Classified	19	21	23	22	Classified	-	17	26	33
Residents	0	0	0	0	Residents	-	0	0	0
GSBS Total	22	28	29	29	TEPHI Total	-	17	26	33
McGovern Medical School					Behavioral Sciences Campus				
Faculty	1,567	1,723	1,797	1,907	Faculty	0	0	0	0
A&P ¹	327	402	324	394	A&P ¹	13	20	20	19
Classified	4,253	4,855	4,979	5,435	Classified	454	616	900	838
Residents	1,193	1,216	1,254	1,272	Residents	0	0	0	0
MMS Total	7,340	8,196	8,354	9,008	BSC Total	467	636	920	857
Cizik School of Nursing					UTHealth Houston				
Faculty	149	146	141	138	Faculty	2,133	2,324	2,427	2,532
A&P ¹	6	6	6	6	A&P ¹	482	577	501	585
Classified	89	89	88	125	Classified	6,304	7,289	7,671	8,259
Residents	0	0	0	0	Residents	1,217	1,241	1,279	1,300
CSON Total	244	241	235	269	Grand Total	10,136	11,431	11,878	12,676

GSBS Faculty Membership by Institution *Fall 2015 - 2024*

Source: Karen Weinberg, Graduate School of Biomedical Sciences

	Fall 2015	Fall 2016	Fall 2017	Fall 2018	Fall 2019	Fall 2020	Fall 2021	Fall 2022	Fall 2023	Fall 2024
UTHealth Houston										
McWilliams School of Biomedical Informatics	2	3	5	6	7	7	7	7	8	8
School of Dentistry	7	7	8	8	8	8	12	11	9	9
McGovern Medical School ¹	171	190	196	201	195	199	194	197	208	215
Cizik School of Nursing	0	0	0	0	0	0	0	0	0	0
School of Public Health	14	17	15	15	14	12	11	13	14	14
subtotal UTHealth Houston	194	217	224	230	224	226	224	228	239	246
UT MD Anderson Cancer Center	365	361	377	367	360	367	380	390	404	431
Texas A&M Institute of Biosciences and Tech	3	3	3	3	3	3	3	3	2	2
Other	3	4	4	3	1	5	4	0	1	2
Grand Total GSBS	565	585	608	603	588	601	611	621	646	681

Full-time Equivalent (FTE) Employees by Source of Funds FY 2024

Source: Scott Barnett, Accounting & Budget, Quarterly Report to the State Auditor's Office as of August 31, 2024

Note: Totals do not include casual employees.

	Faculty	A&P	Residents & Students	Classified	Total
McWilliams School of Biomedical Informatics					
State Funds	15.55	1.80	0.00	15.00	32.35
Designated Funds	4.64	5.20	4.50	22.99	37.33
Contracts & Grant Funds	33.10	0.10	39.24	65.39	137.84
Current Restricted Funds	3.00	2.00	1.08	10.48	16.56
subtotal MSBMI	56.29	9.10	44.82	113.86	224.07
School of Dentistry					
State Funds	129.68	6.90	15.83	182.30	334.71
Designated Funds	17.02	3.35	21.10	61.79	103.26
Contracts & Grant Funds	5.76	0.00	7.45	10.48	23.69
Current Restricted Funds	0.86	0.00	12.00	3.68	16.54
subtotal UTSD	153.32	10.25	56.38	258.25	478.21
Graduate School of Biomedical Sciences					
State Funds	1.45	2.94	5.50	22.14	32.03
Designated Funds	0.00	0.00	50.00	0.30	50.30
Contracts & Grant Funds	0.05	0.56	8.19	0.06	8.86
Current Restricted Funds	0.15	0.00	5.17	0.56	5.88
subtotal GSBS	1.65	3.50	68.86	23.06	97.07
McGovern Medical School					
State Funds	128.81	25.63	26.28	485.31	666.03
Designated Funds	1,564.24	102.61	1,345.58	3,896.83	6,909.26
Contracts & Grant Funds	196.07	4.36	166.04	695.60	1,062.06
Current Restricted Funds	52.37	0.28	49.22	202.00	303.86
subtotal MMS	1,941.48	132.87	1,587.12	5,279.74	8,941.21
Cizik School of Nursing					
State Funds	77.59	4.60	1.75	42.39	126.33
Designated Funds	13.26	1.37	1.00	26.06	41.69
Contracts & Grant Funds	6.14	0.00	2.00	22.21	30.34
Current Restricted Funds	3.22	0.00	1.50	2.68	7.40
subtotal CSON	100.21	5.97	6.25	93.33	205.76
School of Public Health					
State Funds	84.62	5.03	17.20	117.03	223.88
Designated Funds	9.48	1.00	26.87	71.20	108.55
Contracts & Grant Funds	68.94	0.19	75.78	202.91	347.83
Current Restricted Funds	12.23	0.00	16.14	56.19	84.56
subtotal SPH	175.27	6.22	135.99	447.33	764.82
School of Behavioral Health Sciences					
Designated Funds	0.38	0.20	0.00	1.77	2.35
subtotal SBHS	0.38	0.20	0.00	1.77	2.35

continued **FTE Employees by Source of Funds FY 2024**

	Faculty	A&P	Residents & Students	Classified	Total
Texas Epidemic Public Health Institute					
State Funds	0.00	0.00	0.00	0.00	0.00
Designated Funds	0.00	0.00	0.00	0.00	0.00
Current Restricted Funds	5.52	0.10	5.95	39.93	51.50
subtotal TEPHI	5.52	0.10	5.95	39.93	51.50
Behavioral Sciences Campus					
State Funds	36.76	18.50	2.00	879.08	936.34
Current Restricted Funds	0.00	0.00	0.00	1.00	1.00
subtotal BSC	36.76	18.50	2.00	880.08	937.34
University Administration					
State Funds	6.33	60.80	0.50	577.81	645.43
Designated Funds	5.65	40.73	1.93	131.16	179.47
Contracts & Grant Funds	7.11	0.55	4.08	9.96	21.70
Current Restricted Funds	2.29	0.00	1.25	2.15	5.69
subtotal UA	21.37	102.08	7.76	721.08	852.29
All Other					
State Funds	0.00	2.50	0.00	85.00	87.50
Designated Funds	5.00	0.25	0.00	50.00	55.25
Auxiliary Enterprise Funds	0.00	5.00	0.00	43.69	48.69
Contracts & Grant Funds	0.00	0.00	0.00	14.00	14.00
subtotal Other	5.00	7.75	0.00	192.69	205.44
UTHealth Houston					
State Funds	480.78	128.70	69.06	2,406.05	3,084.59
Designated Funds	1,619.66	154.70	1,450.98	4,262.11	7,487.46
Contracts & Grant Funds	317.17	5.76	302.79	1,020.60	1,646.32
Current Restricted Funds	79.65	2.38	92.31	318.66	492.99
Auxiliary Enterprise Funds	0.00	5.00	0.00	43.69	48.69
Grand Total	2,497.26	296.54	1,915.14	8,051.12	12,760.06

Faculty Honors Fall 2024

Sources: NAM and AAAS online member lists; Lisa Cain, PhD, School of Dentistry; Cathy Rozmus, PhD, RN, FNAP, FAAN, Cizik School of Nursing

National Academy of Medicine *(formerly the IOM)*

Lu Ann Aday, PhD (emerita)
Gerard Francisco, MD
Irma Gigli, MD (emerita)

American Academy of Arts & Sciences

Irma Gigli, MD (emerita)
John Spudich, PhD

American Academy of Nursing

Emily Barr, PhD, RN, CPNP-PC, CNM, FAAN
Jennifer Beauchamp, PhD, RN, FAAN
Jessica Coviello, DNP, RN, ANP-BC, FAAN
Maja Djukic, PhD, RN, FAAN
Allison Edwards, DrPH, MS, RN, CNE, CDDN, FAAN
Joan Engebretson, DrPH, AHN-BC, RN, FAAN (emerita)
Deanna Grimes, DrPH, RN, FAAN (emerita)
Sandra Hanneman, PhD, RN, FAAN
Joanne Hickey, PhD, RN, FAAN, FCCM (emerita)
Constance Johnson, PhD, MS, RN, FAAN
Thomas A. Mackey, PhD, APRN-BC, FAAN, FAANP
Melanie McEwen, PhD, RN, CNE, ANEF, FAAN
Janet Meininger, PhD, RN, FAAN (emerita)
Elda Ramirez, PhD, RN, FNP-BC, ENP-BC, FAAN, FAANP, FAEN
Angela Ross, DNP, MPH, RN, PHCNS-BC, FHIMSS, PMP, DASM, FAAN
Linda, A. Roussel, PhD, RN, CNL, NEA-BC, FAAN
Cathy L. Rozmus, PhD, RN, FNAP, FAAN
Susan Ruppert, PhD, RN, FNP-C, ANP-BC, FCCM, FNAP, FAANP, FAAN
Diane Santa Maria, DrPH, MSN, RN, PHNA-BC, FAAN
Geraldine Wood, PhD, RN, FAAN (emerita)

American Association for the Advancement of Science

Zhiqiang An, PhD
Michael Blackburn, PhD (emeritus)
L. Maximilian Buja, MD (emeritus)
John Byrne, PhD
Carmen Dessauer, PhD
Mary Farach-Carson, PhD
Kathleen R. Gibson, PhD
Jacqueline T. Hecht, PhD
Vasanthi Jayaraman, PhD
Theresa Koehler, PhD (emerita)
Michael Lorenz, PhD
Kevin Morano, PhD
Jiajie Zhang, PhD

American College of Dentists

Nikola Angelov, DDS, PhD
Dan Bentley, DDS
Douglas Bogan, DDS
Ralph A. Cooley, DDS
Jeryl English, DDS, MS
David Fray, DDS, MBA
Gary Frey, DDS
Fred A. Garrett, DDS, MS
Kathy Gibson, DDS
Randal M. Glenn, DDS
Thomas C. Harrison, DDS, MBA
Arthur H. Jeske, DMD, PhD
Ronald Johnson, DDS, MS
Harold Kolodney Jr., DMD, FACP
Stephen A. Laman, DDS
S. Jerry Long, DDS
Scott R. Makins, DDS, MS
Karen F. Novak, DDS, MS, PhD
Kalu Ogbureke, BDS, MSc, DMSc, JD
Peggy A. O'Neill, DDS, PhD
Joe M. Piazza, DDS
Gary Pillers, DDS
H. Philip Pierpont, DDS
Ryan Quock, DDS
Priyanshi Ritwik, BDS, MS
June Sadowsky, DDS, MPH
Charles Streckfus, DDS, MA, FAAOM, FAGD
Michelle A. Thompson, DDS, FAGD
Ryan R. Vahdani, DDS, MHA, MAGD
John A. Valenza, DDS
Ben Warner, DDS, MD, MS
Jesse G. Welch, DDS
H. Clark Whitmire, Jr., DMD, JD
Mark Wong, BDS

International College of Dentists

Juliana Barros, DDS
Dan Bentley, DDS
Douglas Bogan, DDS
Shelley L. Canada, DDS
Robert Lee Clitheroe, DDS, PC
Scott Coleman, DDS
Richard Ronald Collins, DDS
Robert R. Debes, DDS
Jeryl D. English, DDS, MS
David F. Fray, DDS, MBA
Gary N. Frey, DDS
Leslie O. Fullerton, DDS, MSD
Katie Julien, DDS, MS
Kathy T. Gibson, DDS
Thomas C. Harrison, DDS, MBA
John F. Helfrick, DDS
Charles Hoopingarner, DDS
W. Kenneth Horwitz, DDS
David E. Jaramillo, DDS
Arthur H. Jeske, DMD, PhD
Cleverick D. Johnson, DDS, MS
Ronald Johnson, DDS
Sudarat Kiat-amnuay, DDS, MS
Timothy C. Kirkpatrick, DDS
Sheila H. Koh, DDS
Stephen Laman, DDS
Don Le, DDS
S. Jerry Long, DDS
Maria A. Loza, DMD, MS, FACP
Scott R. Makins, DDS, MS
Ana Neumann, DDS, MPH, PhD
Peggy A. O'Neill, DDS, PhD
Joe M. Piazza, DDS
H. Philip Pierpont, DDS
Ryan Quock, DDS
Victor A. Rodriguez, DDS
June Sadowsky, DDS, MPH
John D. Smith, Jr., DDS
Ryan R. Vahdani, DDS, MHA, MAGD
John A. Valenza, DDS
Vinu Sista, DDS, FAGD
Ben F. Warner, DDS, MD, MS
Jesse "Jay" G. Welch, DDS

Finance & Philanthropy

Total Funds Operating Budget by Unit & Revenue Source	75
Total Funds Operating Budget by Revenue Source	76
Total Funds Operating Budget by NACUBO Function	77
State Funds Operating Budget	78
Endowment Trends	79
Voluntary Support	79
Faculty Endowment Status	80
Endowed Scholarships	80

Total Funds Operating Budget by Unit & Revenue Source FY 2021 - 2025

Source: Scott Barnett, Accounting and Budget

	FY 2021	FY 2022	FY 2023	FY 2024	FY 2025
McWilliams School of Biomedical Informatics					
State Funds	\$4,750,081	\$4,678,668	\$4,744,292	\$5,627,805	\$5,315,340
Designated Funds	7,038,245	9,780,152	11,079,905	12,140,211	12,598,503
Contract & Grant Funds	8,487,463	11,351,743	11,622,631	14,105,091	16,520,013
Current Restricted Funds	964,099	1,231,973	1,245,542	597,335	1,119,274
subtotal MSBMI	\$21,239,888	\$27,042,536	\$28,692,370	\$32,470,442	\$35,553,130
School of Dentistry					
State Funds	\$25,411,689	\$26,659,389	\$27,808,771	\$28,383,341	\$28,265,359
Designated Funds	21,924,129	27,263,990	31,011,354	31,590,688	35,970,644
Contract & Grant Funds	2,631,878	1,803,494	3,089,157	6,685,861	8,131,289
Current Restricted Funds	2,007,711	1,979,972	2,068,592	2,555,680	1,859,363
subtotal UTSD	\$51,975,407	\$57,706,845	\$63,977,874	\$69,215,570	\$74,226,655
Graduate School of Biomedical Sciences					
State Funds	\$2,049,526	\$2,050,380	\$2,203,891	\$2,638,668	\$3,939,200
Designated Funds	3,706,440	4,354,160	4,217,794	3,838,494	3,468,242
Contract & Grant Funds	1,601,167	1,650,627	1,496,291	1,823,345	2,389,754
Current Restricted Funds	1,067,714	1,101,623	943,165	1,433,250	1,545,741
subtotal GSBS	\$8,424,847	\$9,156,790	\$8,861,141	\$9,733,757	\$11,342,937
McGovern Medical School					
State Funds	\$51,941,423	\$55,095,823	\$55,685,067	\$63,094,146	\$61,825,338
Designated Funds	1,077,962,550	1,166,369,365	1,281,356,917	1,411,583,585	1,493,581,869
Contract & Grant Funds	131,267,307	136,965,482	145,887,463	230,589,065	268,748,906
Current Restricted Funds	82,847,955	92,358,380	95,670,760	22,433,781	25,213,628
subtotal MMS	\$1,344,019,235	\$1,450,789,050	\$1,578,600,207	\$1,727,700,577	\$1,849,369,741
Cizik School of Nursing					
State Funds	\$13,838,929	\$14,523,557	\$14,584,250	\$15,105,086	\$14,324,605
Designated Funds	11,827,346	12,855,492	13,497,991	13,333,826	15,531,185
Contract & Grant Funds	1,205,869	2,203,341	659,470	4,154,437	5,333,258
Current Restricted Funds	1,486,794	1,789,713	2,479,924	2,745,715	2,862,394
subtotal CSON	\$28,358,938	\$31,372,103	\$31,221,635	\$35,339,064	\$38,051,442
School of Public Health					
State Funds	\$18,244,433	\$21,759,139	\$22,948,302	\$24,210,300	\$24,168,779
Designated Funds	19,351,594	21,985,361	19,772,403	23,111,914	31,103,184
Contract & Grant Funds	30,898,342	67,368,727	60,882,317	72,859,553	77,633,959
Current Restricted Funds	8,130,725	7,496,039	7,340,202	3,477,468	3,282,420
subtotal SPH	\$76,625,094	\$118,609,266	\$110,943,224	\$123,659,235	\$136,188,342
School of Behavioral Health Sciences					
Designated Funds	-	-	-	-	1,000,000
subtotal SBHS	-	-	-	-	\$1,000,000
Behavioral Sciences Campus					
State Funds	\$62,932,137	\$63,907,226	\$113,064,729	\$139,373,477	\$145,249,882
Designated Funds	839,461	763,293	1,384,944	1,549,680	1,985,653
Current Restricted Funds	107,884	76,355	78,892	82,834	87,530
subtotal BSC	\$63,879,482	\$64,746,874	\$114,528,565	\$141,005,991	\$147,323,065
Texas Epidemic Public Health Institute					
Designated Funds	-	-	\$365,000	\$0	\$1,369,728
Contract & Grant Funds	-	-	\$20,552,325	\$13,095,238	\$6,129,449
subtotal TEPHI	\$0	\$0	\$20,917,325	\$13,095,238	\$7,499,177
Administrative and Institutional Support					
State Funds	\$146,451,328	\$122,203,376	\$127,141,644	\$141,174,621	\$142,160,589
Designated Funds	81,069,486	79,817,121	91,463,553	101,818,429	139,747,143
Contract & Grant Funds	668,458	9,039,469	13,100,548	12,695,392	12,138,107
Auxiliary Enterprise Funds	20,231,839	25,268,542	25,429,951	26,571,079	27,443,536
Current Restricted Funds	2,604,790	6,056,990	4,615,821	11,333,126	11,629,543
Unexpended Plant Funds	0	0	0	4,000,000	2,271,600
subtotal Admin	\$251,025,901	\$242,385,498	\$261,751,517	\$297,592,647	\$335,390,518
Grand Total					
State Funds	\$325,619,546	\$310,877,558	\$368,180,946	\$419,607,444	\$425,249,092
Designated Funds	1,223,719,251	1,323,188,934	1,454,149,861	1,598,966,827	1,736,356,151
Contract & Grant Funds	176,760,484	230,382,883	257,290,202	356,007,982	397,024,735
Current Restricted Funds	99,217,672	112,091,045	114,442,898	44,659,189	47,599,893
Auxiliary Enterprise Funds	20,231,839	25,268,542	25,429,951	26,571,079	27,443,536
Unexpended Plant Funds	0	0	0	4,000,000	2,271,600
Grand Total	\$1,845,548,792	\$2,001,808,962	\$2,219,493,858	\$2,449,812,521	\$2,635,945,007

Total Funds Operating Budget by Revenue Source FY 2021 - 2025

Source: Scott Barnett, Accounting and Budget

	FY 2021	FY 2022	FY 2023	FY 2024	FY 2025
State Funds					
General Revenue	\$235,475,906	\$221,400,922	\$225,384,793	\$248,888,599	\$249,864,889
Estimated E&G Income					
Student Tuition and Fees	23,721,532	24,854,016	25,516,348	24,822,602	24,253,208
Interest on Time Deposits	2,928,216	2,959,998	2,210,000	2,850,000	3,500,000
Other Income					
Income from Patients	7,900,000	7,900,000	9,000,000	9,000,000	9,000,000
Transfers from/to Other Funds				(4,000,000)	(2,271,600)
State/Federal Grants & Contracts	370,043	367,710	5,975,094	7,261,856	7,250,260
Tobacco Settlements	0	0	0	0	0
BSC	55,223,849	53,394,912	100,094,711	130,784,387	133,652,335
Total State Funds	\$325,619,546	\$310,877,558	\$368,180,946	\$419,607,444	\$425,249,092
Designated Funds	\$1,223,719,251	\$1,323,188,934	\$1,454,149,861	\$1,598,966,827	\$1,736,356,151
Contract and Grant Funds	176,760,484	230,382,883	257,290,202	356,007,982	397,024,735
Current Restricted Funds	99,217,672	112,091,045	114,442,898	44,659,189	47,599,893
Auxiliary Enterprise Funds	20,231,839	25,268,542	25,429,951	26,571,079	27,443,536
Unexpended Plant Funds	0	0	0	4,000,000	2,271,600
Grand Total	\$1,845,548,792	\$2,001,808,962	\$2,219,493,858	\$2,449,812,521	\$2,635,945,007

Total Funds Operating Budget by NACUBO Function FY 2021 - 2025

Source: Scott Barnett, Accounting and Budget

	FY 2021	FY 2022	FY 2023	FY 2024	FY 2025
State Funds					
Instruction	\$102,869,309	\$108,078,594	\$111,130,340	\$107,807,983	\$107,831,092
Research	40,667,490	38,296,737	30,652,961	34,643,470	36,462,832
Public Service	99,739	206,801	105,364	110,531	
Hospitals/Clinics	68,444,585	66,577,525	120,949,395	153,469,843	158,532,097
Academic Support	26,768,399	27,100,806	29,637,579	38,315,659	37,396,228
Sudent Services	2,469,742	2,975,112	3,119,244	3,836,979	3,938,068
Institutional Support	60,493,994	42,645,074	47,571,225	54,678,504	59,727,259
Operation & Maintenance of Plant	23,723,443	24,914,064	24,931,993	26,661,630	21,278,671
Scholarships & Fellowships	82,845	82,845	82,845	82,845	82,845
Total State Funds	\$325,619,546	\$310,877,558	\$368,180,946	\$419,607,444	\$425,249,092
Designated Funds					
Instruction	\$707,709,450	\$777,415,801	\$871,067,843	\$981,888,827	\$1,051,564,526
Research	25,405,642	34,246,184	43,985,800	61,367,574	69,276,079
Public Service	7,053,714	6,630,430	2,384,727	1,702,931	6,022,653
Hospitals/Clinics	372,473,120	380,409,329	402,554,568	424,240,209	457,079,049
Academic Support	36,572,027	39,572,138	42,198,035	42,391,565	46,986,665
Sudent Services	8,645,019	9,945,733	10,963,295	11,202,814	9,694,420
Institutional Support	47,834,969	54,776,377	59,882,532	55,666,098	66,314,762
Operation & Maintenance of Plant	13,885,534	16,061,913	17,961,095	17,157,576	24,551,764
Scholarships & Fellowships	4,139,776	4,131,029	3,151,966	3,349,233	4,866,233
Total Designated Funds	\$1,223,719,251	\$1,323,188,934	\$1,454,149,861	\$1,598,966,827	\$1,736,356,151
Contract & Grant Funds	\$176,760,484	\$230,382,883	\$257,290,202	\$356,007,982	\$397,024,735
Current Restricted Funds	99,217,672	112,091,045	114,442,898	44,659,189	47,599,893
Auxiliary Enterprise Funds	20,231,839	25,268,542	25,429,951	26,571,079	27,443,536
Unexpended Plant Funds	0	0	0	4,000,000	2,271,600
Grand Total	\$1,845,548,792	\$2,001,808,962	\$2,219,493,858	\$2,449,812,521	\$2,635,945,007

State Funds Operating Budget FY 2021 - 2025

Source: Scott Barnett, Accounting and Budget

¹ Effective FY 2022, the State Funds Budget no longer includes Tuition Revenue Bond (TRB) debt retirement.

	FY 2021	FY 2022	FY 2023	FY 2024	FY 2025
Instruction and Academic Support					
McWilliams School of Biomedical Informatics	\$2,326,079	\$3,141,491	\$3,340,197	\$3,989,381	\$3,587,041
School of Dentistry	21,131,240	21,978,374	22,321,543	23,085,665	22,939,574
Graduate School Biomedical Sciences	2,049,526	2,050,380	2,203,891	2,638,668	3,939,200
McGovern Medical School	35,550,939	34,342,287	37,634,974	41,764,567	41,497,533
Cizik School of Nursing	13,838,929	14,523,557	14,584,250	15,105,086	14,324,605
School of Public Health	13,021,028	16,921,491	17,517,225	18,306,122	17,823,347
School of Behavioral Health Sciences	-	-	-	-	0
Library	378,643	518,990	492,720	477,350	517,084
Organized Activities	1,789,681	1,470,917	1,449,841	1,708,297	2,123,340
Special Items - Instructional Support	4,102,191	3,499,392	3,978,075	3,531,539	4,433,005
subtotal I&AS	\$94,188,256	\$98,446,879	\$103,522,716	\$110,606,675	\$111,184,729
Research					
Research Enhancement	\$19,760,520	\$15,141,066	\$17,543,598	\$23,350,954	\$22,712,538
Special Items - Research	9,828,361	9,785,123	9,238,133	9,689,295	9,916,170
subtotal Research	\$29,588,881	\$24,926,189	\$26,781,731	\$33,040,249	\$32,628,708
Public Service					
Special items - Public Service	77,423	81,294	82,137	83,954	0
Health Care					
Patient Care Activities	\$53,027,074	\$54,354,090	\$103,347,265	\$122,701,252	\$123,070,146
Special Items - Health Care	4,112,477	3,929,758	3,707,086	3,730,553	3,528,651
subtotal Health Care	\$57,139,551	\$58,283,848	\$107,054,351	\$126,431,805	\$126,598,797
Institutional Support					
Institutional Support	\$38,408,448	\$39,443,798	\$39,942,650	\$44,153,482	\$49,388,738
Special Items - Institutional Support					
subtotal Institutional Support	\$38,408,448	\$39,443,798	\$39,942,650	\$44,153,482	\$49,388,738
Student Services					
Student Services	1,917,145	2,374,635	2,431,630	2,914,395	3,027,286
Staff Benefits					
Staff Benefits	64,214,902	65,268,507	66,254,169	79,265,292	85,044,492
Operation and Maintenance of Plant					
Operation and Maintenance of Plant	\$20,813,835	\$21,315,286	\$21,746,016	\$22,888,713	\$17,208,841
Tuition Revenue Bond Debt Retirement ¹	18,749,350	0	0	0	0
subtotal O&M of Plant	\$39,563,185	\$21,315,286	\$21,746,016	\$22,888,713	\$17,208,841
Scholarships and Fellowships					
Scholarships and Fellowships	82,845	82,845	82,845	82,845	82,845
E&G Capital Projects					
Capital Projects	438,910	654,277	282,701	140,034	84,656
Grand Total	\$325,619,546	\$310,877,558	\$368,180,946	\$419,607,444	\$425,249,092

Endowment Trends *FY 2015 - 2024*

Source: Lisa Christison, Office of Development

As of August 31	Number of Endowments	Book Value	Market Value	Annual % Change in Book Value
2015	526	\$223,734,777.02	\$273,297,428.64	36.6%
2016	573	\$256,596,233.44	\$303,593,994.62	14.7%
2017	616	\$281,200,437.93	\$350,923,924.30	9.6%
2018	674	\$404,176,326.00	\$491,896,993.70	43.7%
2019	707	\$429,942,741.95	\$515,353,536.76	6.4%
2020	739	\$472,569,705.46	\$580,988,350.51	9.9%
2021	774	\$542,752,772.45	\$805,140,881.09	14.9%
2022	840	\$670,250,341.65	\$855,493,985.63	23.5%
2023	888	\$713,505,824.74	\$898,098,108.49	6.5%
2024	923	\$746,801,451.00	\$979,189,706.93	4.7%

Voluntary Support *FY 2020 - 2024*

Source: Lisa Christison, Office of Development

Source of Cash Received	FY 2020	FY 2021	FY 2022	FY 2023	FY 2024
Alumni	\$1,233,125	\$2,234,110	\$1,019,059	\$1,507,906	\$1,890,470
Individual	12,041,659	33,885,508	28,436,216	14,317,186	19,499,901
Foundation	24,700,892	22,101,640	25,064,823	32,516,662	26,810,078
Corporation	3,935,326	3,084,434	2,397,067	2,084,921	2,483,568
Organization	6,597,947	23,594,673	5,717,655	7,412,752	7,118,202
Grand Total	\$48,508,949	\$84,900,365	\$62,634,820	\$57,839,427	\$57,802,219

Faculty Endowment Status *FY 2024*

Source: Lisa Christison, Office of Development

Type	Status as of August 31, 2024		
	Total Number	Number Filled	Percent Filled
Distinguished University Chair	18	17	94%
Distinguished Chair	55	48	87%
Chair	92	85	92%
Distinguished Professorship	57	43	75%
Professorship	91	81	89%
Faculty Fellowship	3	3	100%
Grand Total	316	277	88%

Endowed Scholarships *FY 2015 - 2024*

Source: Lisa Christison, Office of Development

As of August 31	Number of Endowed Scholarships	Book Value	Market Value
2015	189	\$16,985,526.72	\$20,971,126.43
2016	198	\$19,837,518.64	\$23,572,550.37
2017	210	\$22,894,153.42	\$29,786,791.77
2018	227	\$25,863,744.09	\$34,127,110.55
2019	252	\$35,735,181.28	\$43,347,777.18
2020	259	\$40,674,229.86	\$50,423,109.76
2021	271	\$48,529,904.99	\$72,143,925.03
2022	291	\$55,053,123.43	\$70,832,364.93
2023	305	\$62,484,257.45	\$77,996,502.81
2024	318	\$66,617,917.44	\$86,021,118.18

Physical Facilities

Capital Equipment Expenditures by Asset Category	83
Facilities Operating Expenditures (Owned)	84
Purchased Utilities	84
Space Inventory by Function	85
Space Inventory by Program	86

Capital Equipment Expenditures by Asset Category FY 2015 - 2024

Source: Sonia Aguilar, Capital Assets Management

Asset Category Description	FY 2015	FY 2016	FY 2017	FY 2018	FY 2019
Office equipment & furniture	\$19,137	\$71,535	\$60,808	\$29,397	\$13,106
Physical plant & police	195,308	345,267	1,211,526	571,231	322,979
Audio-visual & media production	229,481	197,846	213,209	433,520	1,611,675
Medical, lab, & research	7,415,587	7,617,539	7,813,742	11,675,633	7,084,665
Hospital & patient care	50,568	95,365	298,137	237,844	487,204
Instructional, teaching, & library	437,974	1,207,045	316,644	406,655	577,361
Data processing & computer related	8,465,693	6,399,759	9,501,088	14,401,667	10,103,874
Print shop	976,796	0	0	0	0
Food service	44,828	9,250	23,334	0	19,510
Recreational	0	0	0	19,475	34,494
Grand Total	\$17,835,374	\$15,943,606	\$19,438,486	\$27,775,422	\$20,254,866

Asset Category Description	FY 2020	FY 2021	FY 2022	FY 2023	FY 2024
Office equipment & furniture	\$5,599	\$8,734	\$0	\$10,574	\$18,191
Physical plant & police	194,617	432,221	501,826	789,397	225,905
Audio-visual & media production	705,519	392,436	160,107	659,441	291,874
Medical, lab, & research	6,151,127	5,985,350	8,488,946	13,950,156	17,984,130
Hospital & patient care	1,396,330	2,444,122	2,770,182	2,019,670	1,606,023
Instructional, teaching, & library	214,604	356,532	272,545	488,515	764,188
Data processing & computer related	10,568,513	39,953,211	6,134,770	5,620,932	6,577,551
Print shop	0	0	0	0	0
Food service	0	0	0	17,333	38,639
Recreational	0	0	322,451	1,750	137,877
Grand Total	\$19,236,309	\$49,572,606	\$18,650,827	\$23,557,768	\$27,644,377

Facilities Operating Expenditures (Owned) FY 2024

Source: Addison Marshall, Facilities Planning & Engineering

Building	Purchased Utilities	Maintenance & Operation	Housekeeping	FY 2024 Total
Cyclotron Facility	\$30,423	\$40,131	\$7,364	\$77,918
Medical School	3,763,943	1,660,291	710,202	6,134,436
Operations Center	213,111	459,298	3,331	675,740
Reuel A. Stallones	889,582	502,032	233,986	1,625,599
University Center Tower	937,648	1,567,337	398,916	2,903,901
RAHC	66,699	126,896	36,648	230,243
School of Nursing	187,669	452,842	203,213	843,724
UT Professional Building	1,067,134	3,944,833	765,250	5,777,216
Sarofim Research Building	1,534,928	676,868	188,857	2,400,653
Medical School Expansion	1,831,501	572,014	144,289	2,547,804
Behavioral & Biomedical Sciences	806,442	376,386	180,740	1,363,568
School of Dentistry	1,019,805	697,002	534,351	2,251,158
Jesse Jones Library	221,225	417,987	192,896	832,108
Cooley Life Center	19,655	38,661	22,965	81,281
Grand Total UTHealth Houston	\$12,589,766	\$11,532,577	\$3,623,007	\$27,745,350

Purchased Utilities FY 2015 - 2024

Source: Addison Marshall, Facilities Planning & Engineering

Note: Figures include utilities costs for THI lease space as well as electricity, chilled water, steam, water, sewer, waste collection and natural gas for owned buildings exclusive of South Campus Housing and Recreation Center.

Year	Total Expenditures	Annual % change
FY 2015	\$16,030,465	-0.4%
FY 2016	\$15,516,958	-3.2%
FY 2017	\$16,051,988	3.4%
FY 2018	\$14,402,039	-10.3%
FY 2019	\$13,792,606	-4.2%
FY 2020	\$12,579,216	-8.8%
FY 2021	\$12,278,641	-2.4%
FY 2022	\$12,567,336	2.4%
FY 2023	\$12,286,620	-2.2%
FY 2024	\$12,589,766	2.5%

Space Inventory by Function FY 2015 - 2024

Source: Bret Wandel, Facilities Planning & Engineering

¹ASF = Assignable Square Feet

	FY 2015	FY 2016	FY 2017	FY 2018	FY 2019
Classroom	93,742	94,267	104,817	108,720	115,388
Lab	510,441	505,524	495,615	500,145	499,551
Office	1,059,029	1,073,248	1,089,188	1,110,442	1,123,169
Study	28,666	56,299	53,678	50,948	50,111
Special Use	72,656	72,511	82,427	83,911	86,323
General Use	110,025	116,673	110,565	111,956	110,640
Support	1,374,932	1,378,613	1,437,460	1,282,285	1,291,093
Health Care	604,837	796,029	829,915	858,364	849,445
Residential	700,835	701,180	701,177	701,177	701,177
Vacant	19,097	46,778	34,592	26,832	38,100
Total ASF¹	4,574,260	4,841,120	4,939,432	4,834,780	4,864,997

	FY 2020	FY 2021	FY 2022	FY 2023	FY 2024
Classroom	118,550	118,824	116,088	115,953	122,735
Lab	506,317	504,331	499,261	506,281	510,259
Office	1,153,181	1,156,039	1,210,523	1,139,028	1,181,127
Study	42,010	42,654	41,947	42,864	42,227
Special Use	86,298	87,031	87,020	80,103	88,870
General Use	111,944	111,680	129,609	132,475	151,332
Support	1,289,336	1,289,847	1,284,466	1,274,720	1,594,564
Health Care	936,510	908,987	1,139,320	1,132,292	1,177,636
Residential	701,177	701,177	701,177	701,259	701,129
Vacant	13,350	13,347	11,060	59,098	228,657
Total ASF¹	4,964,673	4,933,917	5,220,469	5,184,073	5,798,536

Space Inventory by Program FY 2015 - 2024

Source: Bret Wandel, Facilities Planning & Engineering

¹ASF = Assignable Square Feet

	FY 2015	FY 2016	FY 2017	FY 2018	FY 2019
Instruction	705,168	789,367	816,415	833,009	832,059
Research	637,984	632,133	649,040	662,826	664,434
Public Service	344,639	431,399	446,261	503,823	529,176
Academic Support	441,677	473,075	487,061	464,480	459,070
Student Service	1,266,994	1,264,790	1,261,884	1,177,016	1,176,680
Institutional Support	958,019	958,469	1,000,801	932,395	939,107
Physical Plant Operations	62,318	64,612	75,768	76,050	72,785
Independent Operations	138,364	180,496	167,610	158,349	153,587
Vacant	19,097	46,778	34,592	26,832	38,100
Total ASF¹	4,574,260	4,841,120	4,939,432	4,834,780	4,864,997

	FY 2020	FY 2021	FY 2022	FY 2023	FY 2024
Instruction	885,378	880,147	1,011,532	1,003,126	1,030,666
Research	664,110	684,365	678,386	655,252	678,942
Public Service	574,176	546,966	702,217	708,557	727,600
Academic Support	479,816	469,834	466,657	501,814	525,625
Student Service	1,176,879	1,173,087	1,174,005	1,169,265	1,322,836
Institutional Support	952,211	971,094	1,000,084	906,808	1,063,943
Physical Plant Operations	71,110	74,681	76,456	88,984	104,114
Independent Operations	147,643	120,397	100,072	91,169	116,281
Vacant	13,350	13,347	11,060	59,098	228,529
Total ASF¹	4,964,673	4,933,917	5,220,469	5,184,073	5,798,536