

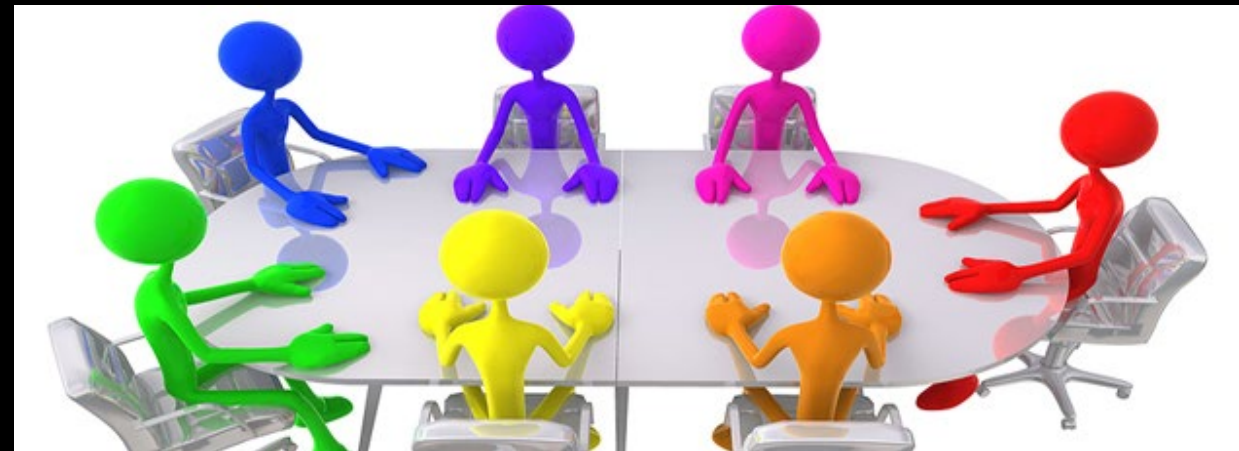
Animal Research at UTHealth

Bríd Áine Nic Dhonnchadha, PhD
Director, IACUC
Animal Welfare Committee Office

<https://inside.uth.edu/animal-research>

What is an IACUC?

- The **I**nstitutional **A**nimal **C**are and **U**se **C**ommittee
 - Known locally as the Animal Welfare Committee or **AWC**
 - Ensures that all vertebrate animals used for research are treated ethically and humanely.
- Members include:
 - Veterinarians
 - Practicing scientists experienced in animal research
 - Non-scientists
 - Non-affiliated members



Animal Care Regulations

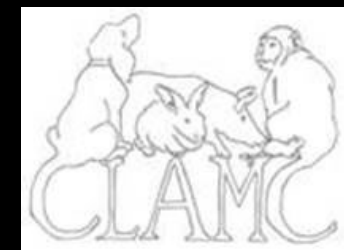
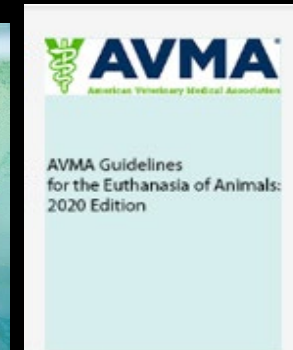
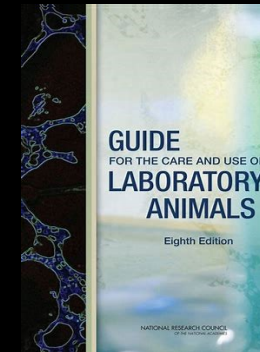
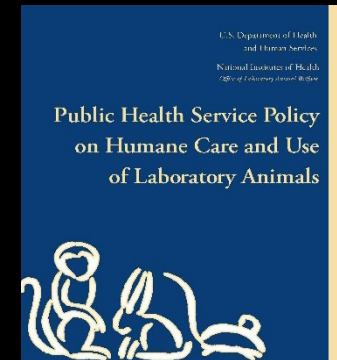
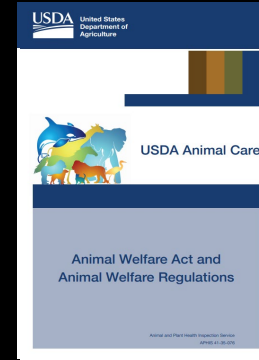
Animal Welfare Act (AWA)
Public Health Service (PHS) Policy

Federal Agencies
(USDA-APHIS, NIH-OLAW)

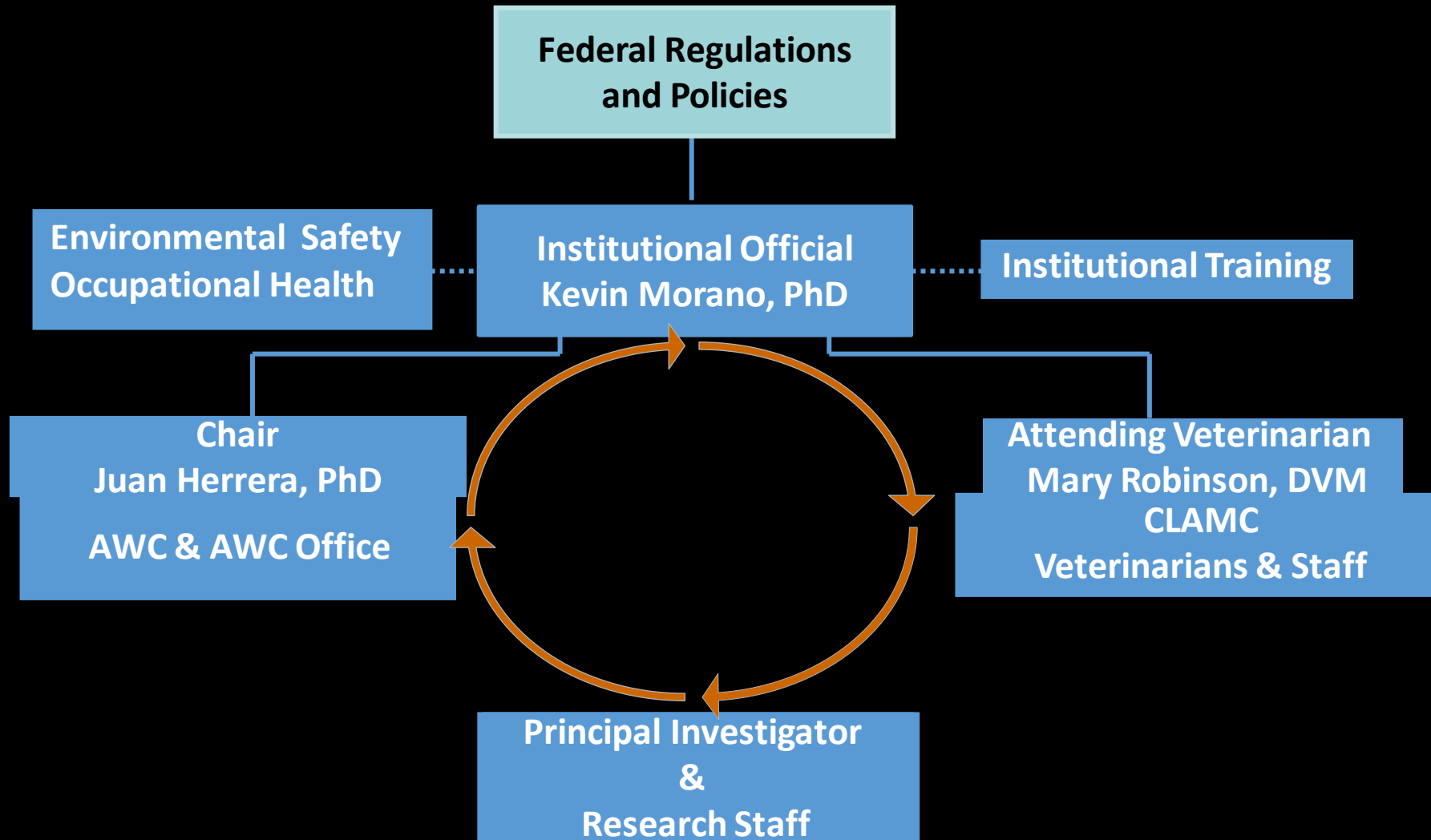
-The Guide for the Care and Use of Laboratory Animals
-American Veterinarians Medical Association (AVMA)
Guidelines for the Euthanasia of Animals
- AAALAC Accreditation Program

AWC, Veterinarians, Researchers

Animal Welfare & Safety



UTHealth Animal Use and Care Program



When is an AWC animal protocol required?

- Covers all animal activities performed at UTHealth facilities
- All animal activities, even off site, where UTHealth funds are used to purchase the research animals
- Production of custom antibodies
- Tissue harvest protocols with antemortem manipulations

Requirements to conduct research

- Approved animal protocol-PI must be a faculty member
- Completion of CLAMC training
- Enrollment in Occupational Health Program
- Approval for the use of chemical, biological or radioactive agents
 - SCRO approval for the use of human stem cell in animals

AWC Considerations for Animal Use

- The rationale provided for using animals
 - What is the significance of this research that can justify animal use?
- Appropriateness of the species
 - Why use this species?
 - Justification for the number of animals to be used
- Clear and concise sequential description of the procedures
 - Impact of the procedures on the animals' wellbeing
 - Description and rationale for anticipated or selected endpoints
 - Method of euthanasia or disposition of animals
- Were alternatives considered for this research?
 - Minimize the pain and suffering of the animals used
- Housing and husbandry requirements
 - Use of hazardous materials and provision of a safe working environment
- Adequacy of training and experience of personnel
 - Roles and responsibilities
 - Conduct of surgical procedures

Animal Protocol Submission

<https://inside.uth.edu/animal-research>

<https://iris.uth.tmc.edu>

Resources for Animal Researchers

▶ Investigator Training

iCARE Resources

iRIS Links

Animal Research FAQs

Log In

iRIS *Integrated Research Information Software*



User ID:

Password:

Log In

System/Browser Requirements

For iRIS assistance, call 713-500-7960. For password problems, call the Help Desk at 713-486-4848. System timeout after 120 minutes. SAVE your work!

Terms of Use | Privacy Statement

Copyright © 2001-2017 iMedRIS Data Corporation. All rights reserved.

Version 10.03.1 Build 778 Updated 2017/09/14 10:15

AWC website resources-FAQs

<https://inside.uth.edu/animal-research>

Resources for Animal Researchers

iRIS Links

Animal Research FAQs

Grant Guidance

Protocol Guidelines and Meeting
Dates

Animal Research FAQs

Questions for the Animal Welfare Committee? Contact us at 713-500-3625 or
via email awc@uth.tmc.edu.

Who can be the Principal Investigator on a protocol? ↓

Where can I find the animal protocol application? ↓

How do I make an amendment/change to my already approved animal protocol? ↓

How do I get access to iRIS? ↓

When are protocol applications due? ↓

When do I have to renew my animal research application? ↓

How do I add new personnel to my protocol? ↓

Where do I find information about animal training courses? ↓

How do I obtain CLAMC animal resource facility access? ↓

How do I add a title or new Grant agency to my protocol approval letter? ↓

Who can I contact with questions regarding animal protocols? ↓

AWC website resources-Policies for Animal Research

<https://inside.uth.edu/animal-research>

Resources for Animal Researchers

Policies for Animal Research

Occupational Health Program for
Personnel with Animal Exposure

Reporting Animal Welfare

Concerns

Contact Us

- Non-pharmaceutical Grade Compound (NPG) Policy
- Prolonged Restraint Policy
- Rabbit Environmental Enrichment Policy
- **Rodent Survival Surgery Policy**
- Rodent Tail Clipping Policy
- Rodent Toe Clipping Policy
- **Rodent Tumor Policy**

AWC website resources-Breeding Calculator

<https://inside.uth.edu/animal-research>

Forms and Resources

Resources for Animal Researchers

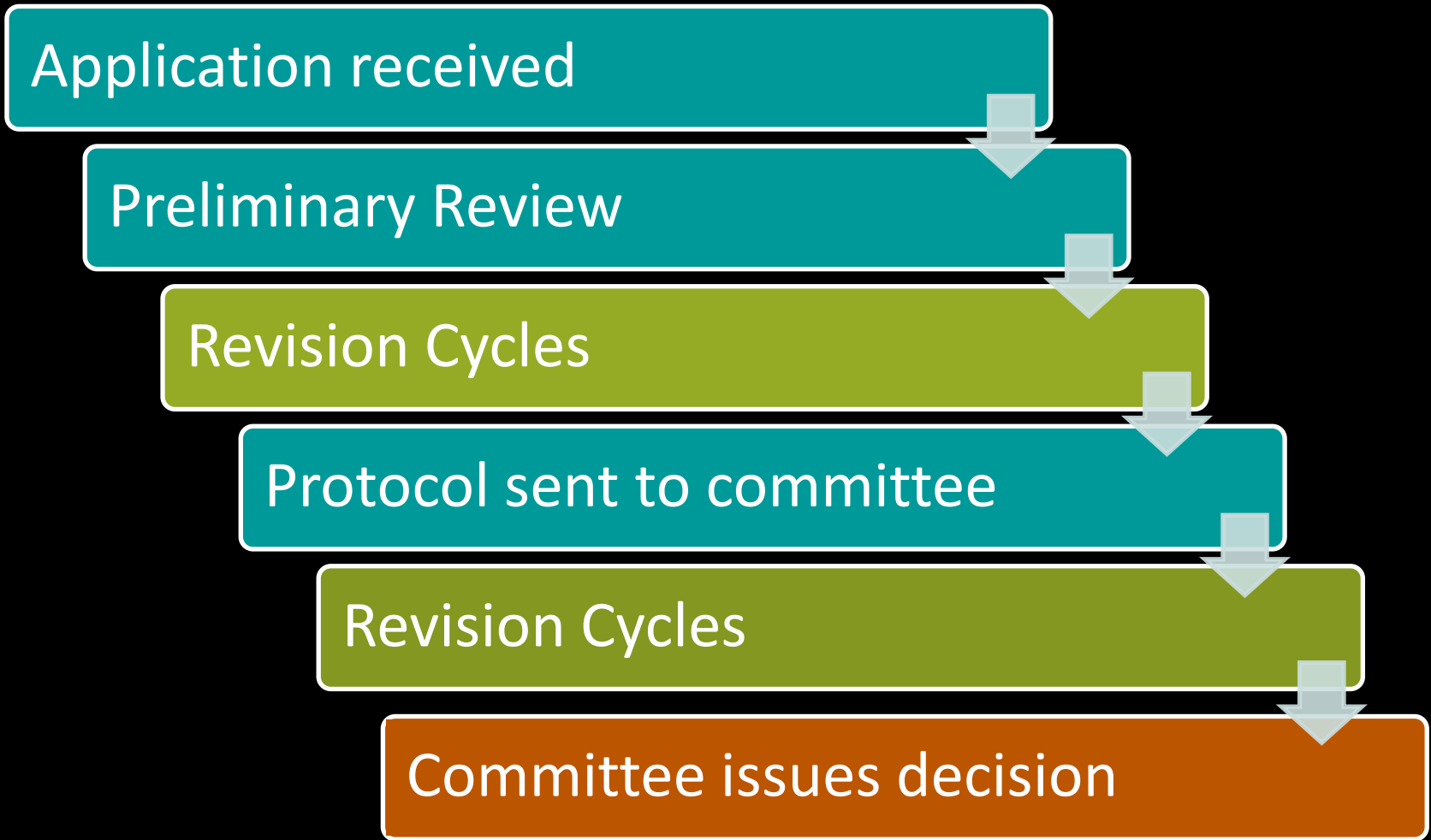
Forms and Resources

Strain	Number of mice needed for experiments	Years remaining in project	Sexes needed	Surplus mice	% of useable genotypes	Average pups per litter	Average litters per female	Total number per strain (incl surplus)	Total number for breeding
<i>Example</i>	500	3	Both	10%	25.0%	6	4		83
A. C57BL/6	150	3	Both	10%	100.0%	6	3	45	
B. Balb/c	120	3	Both	10%	100.0%	6	3	38	
C.			Both						
D.			Both						
E.			Both						
F.			Both						

Resources for Investigators

animal_research@uth.tmc.edu

Protocol Review Timeline



AWC website resources

<https://inside.uth.edu/animal-research>

Resources for Animal Researchers

Protocol Guidelines and Meeting Dates

AWC Review

Forms and

Policies for

Suggested Initial Submission Date	Return Responses to Pre-Review by	For Review on (AWC meeting)
November 20, 2024	December 4, 2024	December 18, 2024
January 2, 2025	January 13, 2025	January 24, 2025
February 3, 2025	February 17, 2025	February 28, 2025
March 3, 2025	March 17, 2025	March 28, 2025
March 31, 2025	April 14, 2025	April 25, 2025

What happens post-approval?

- Post-approval monitoring visits
- Amendments
 - New personnel, new strains, experiments & procedures
- Report adverse events & protocol deviations
- 3-year renewal

AWC website resources-Grant Guidance

<https://inside.uth.edu/animal-research>

Resources for Animal Researchers

iCARE Resources

iRIS Links

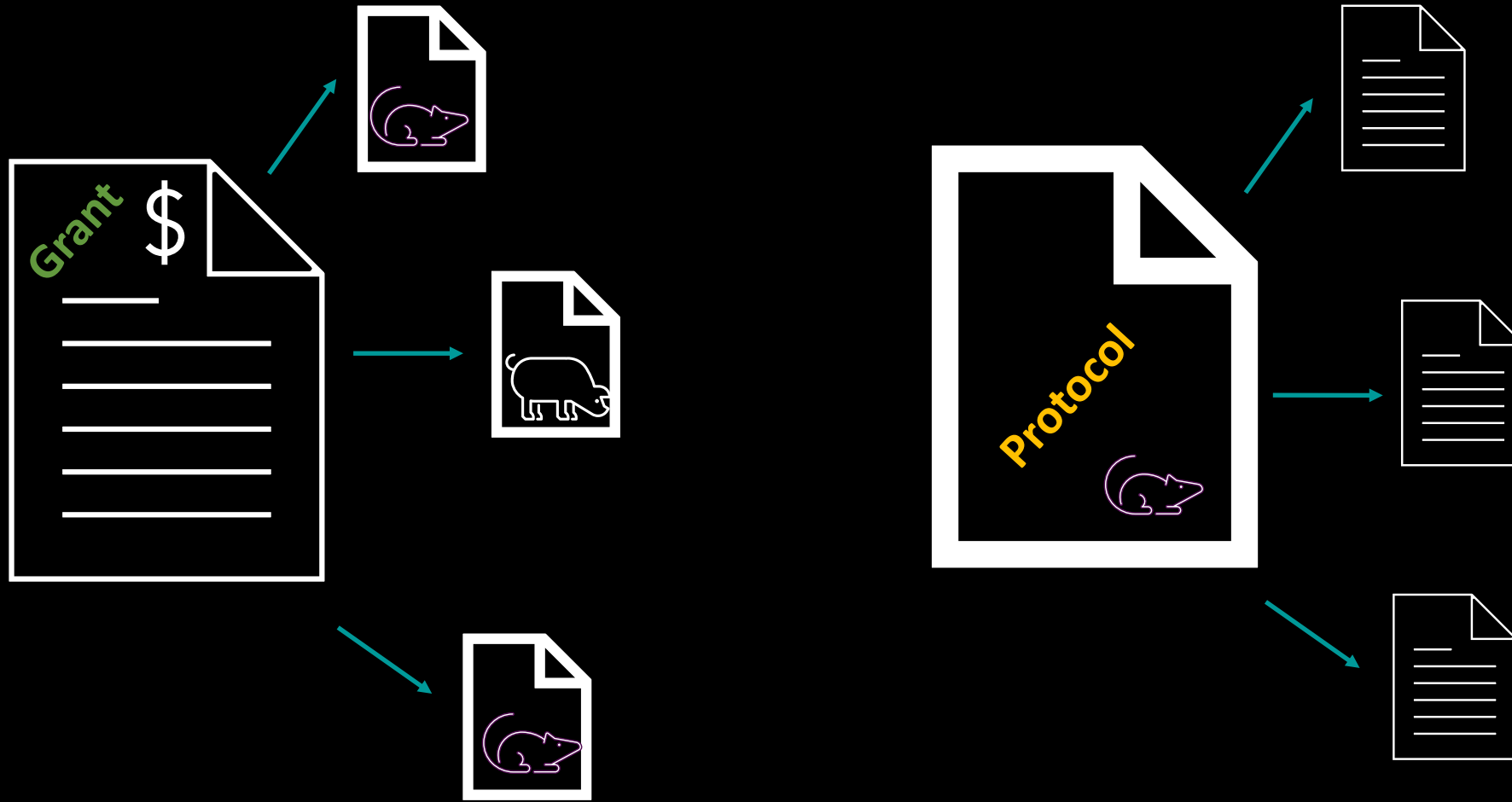
Animal Research FAQs

Grant Guidance

Application Information

- AAALAC Accreditation Current Status and Date: Full Accreditation (Unit 000455), March 27, 2024.
- Original date of AAALAC accreditation: May 31, 1978
- PHS Assurance Number: A3413-01 or D16-00257, either number is acceptable
- USDA Registration Number: 74-R-0068
- NIH Guidance for Completion of the Vertebrate Animal Section for **grants** and **contracts**.
- Description of the Animal Care and Use Resources and Program is provided on the **CLAMC** link.

Grant to Protocol Associations



AWC website resources-FAQs

<https://inside.uth.edu/animal-research>

Research Facilities

▶ Facility Inspections

▶ Investigator Training

iCARE Resources

iRIS Links

Animal Research FAQs

Grant Guidance


Protocol Guidelines and Meeting
Dates

AWC Review Fees

Forms and Resources

Policies for Animal Research

Occupational Health Program for
Personnel with Animal

Exposure 

Reporting Employee Injuries or

Who can be the Principal Investigator on a protocol? ↓

Where can I find the animal protocol application? ↓

How do I make an amendment/change to my already approved animal protocol? ↓

How do I get access to iRIS? ↓

When are protocol applications due? ↓

When do I have to renew my animal research application? ↓

How do I add new personnel to my protocol? ↓

Where do I find information about animal training courses? ↓

How do I obtain CLAMC animal resource facility access? ↓

How do I add a title or new Grant agency to my protocol approval letter? ↓

Who can I contact with questions regarding animal protocols? ↓



AWC website resources-Grant Guidance

<https://inside.uth.edu/animal-research>

Resources for Animal Researchers

iCARE Resources

iRIS Links

Animal Research FAQs

Grant Guidance

If the animal work proposed in the grant is already covered by an approved AWC animal protocol

If the research goals and animal procedures proposed in the grant is mostly covered by an approved AWC Animal Protocol for the same species of animals but with some variations (anesthesia, experimental groups, strains of animals, euthanasia methods, *etc.*)

If the animal work proposed in the grant is not covered by an approved AWC Animal Protocol

If some or all of the animal work proposed in the grant is to be conducted at another institution

Grant Congruency-Does the AWC protocol match the grant?

- Satisfy the requirements of the PHS Policy & NIH grants policy
- All animal-related funding proposals undergo congruence review
 - Grant animal activities = Animal protocol activities
 - General scope of the work
 - Experimental procedures and endpoints
 - Species
 - Euthanasia method
 - Approximate number of animals

Typical Timeline for Congruency Review

PI notified of fundable score/JIT notification



PI submits protocols to AWC



UTHealth submits verification of AWC approval

(date)



Why?



Resolve-amend protocol or notify NIH of change

Contact Information

AWC Office: (713) 500-3625, awc@uth.tmc.edu

AWC website: <https://uth.edu/animal-research/>

CLAMC main line: (713) 500-7728, acare@uth.tmc.edu

iRIS helpline: (713) 500-7960, option #2

